



# Allied Health

2025–2026 Product Catalog

 **fisher science**  
education  
part of Thermo Fisher Scientific

## Featured Suppliers



Visit [fisheredu.com/featuredsuppliers](http://fisheredu.com/featuredsuppliers) to learn more about these suppliers and their products.

## Helpful Icons



New product



Meets Americans with Disabilities Act requirements



Protects against splashes from hazardous chemicals or potentially infectious materials



Applicable for remote learning



Defined as a medical device by the FDA

## Guarantee

If you're not 100% satisfied with your purchase, contact our customer service team within 30 days of your invoice date and we'll either exchange, repair, or replace the product, or give you a credit for the full purchase price. Call us toll-free for a return authorization number.

*Special order items, furniture, and closeouts cannot be exchanged or credited.*

**Phone:** 1-800-955-1177 • 7 a.m. to 5:30 p.m.  
Central Time, Monday through Friday

**Fax:** 1-800-955-0740 • 24 hours a day, 7 days a week

**Email:** [fse.custserv@thermofisher.com](mailto:fse.custserv@thermofisher.com)

**Website:** [fisheredu.com](http://fisheredu.com)

**Address:** Fisher Science Education  
4500 Turnberry Drive  
Hanover Park, IL 60133

For international orders, see page 68

*Products featured in this catalog may have limited availability and extended lead times. Prices are subject to change.*

## Connect with Us on Social Media



[fisheredu.com/facebook](http://fisheredu.com/facebook)



[pinterest.com/fishersciedu](http://pinterest.com/fishersciedu)

# Allied Health

Preparing today's students to be the innovators of tomorrow isn't always easy, but finding the right teaching tools can be. From basic lab supplies to state-of-the-art classroom technology, the Fisher Science Education team has everything you need to create a 21st century STEM learning environment.

Visit [fisheredu.com](https://fisheredu.com) to get started.

## Want to Customize Aspects of Your Curriculum?

Explore custom kits to meet the unique demands of your classroom.

Visit [fisheredu.com/customkitting](https://fisheredu.com/customkitting) to learn more.

## Concerned About Shipping and Handling Fees?

We offer \$12 flat-rate shipping on most orders and our hazardous material fee is just \$15—the lowest in the country.

## Looking for Something Else?

Check out our other catalogs:

- Lab furniture and equipment
- Lab supplies and consumables
- Life sciences
- Physical sciences
- Safety
- STEM



Fungi are flexible natural resources. Different species can be used for food, pest control, and chemicals like cyclosporine, which helps treat autoimmune conditions and assists in organ transplants.

Visit [fisheredu.com/headlinediscoveries](https://fisheredu.com/headlinediscoveries) for more articles and information for your classroom.

**Allied Health** helps future healthcare professionals train for fields such as audiology, emergency care, and other specialty fields, seeking to prepare competent healthcare practitioners and leaders across settings.

### Health Science

Anatomy, Physiology & Medical Technology....	6
Instruments & Kits .....	6
Human Charts & Models .....	11
Simulators & Medical Trainers.....	27

### Vet Tech

Testing.....	48
Animal Anatomical Models and Simulators....	51
Equipment and Instruments.....	60

Visit [fisheredu.com](https://fisheredu.com) to view our full offering of products.



# Expanding The Minds of Students One Classroom at a Time

*Discover the World of Interactive Learning with a  
Full Range of Digital and Traditional Microscopes*



[fisheredu.com/laxco](https://fisheredu.com/laxco)

 **LAXCO**  
MICROSCOPES REDEFINED



## Biological Models for Interactive Learning

Whether you're teaching about the pulmonary system or heart conditions, these biological models are an excellent way to elevate your anatomy lessons with hands-on learning.

Description	Cat. No.
Eisco™ Advanced Heart and Lungs Model	<a href="#">S02948</a>
Eisco Premium Human Digestive Canal Anatomical Model	<a href="#">S012565</a>
Eisco Model of Human Heart Conditions	<a href="#">S012564</a>



## Bring Human Anatomy to Life

Help foster a deeper understanding of human anatomy with interactive tools and simulators.

Description	Cat. No.
3B Scientific™ SAM4 Auscultation Manikin, Dark Skin	<a href="#">S012543</a>
3B Scientific SAM4 Auscultation Manikin, Light Skin	<a href="#">S012544</a>
3B Scientific SAM4 Plus Auscultation Manikin, Dark Skin	<a href="#">S012485</a>
3B Scientific SAM4 Plus Auscultation Manikin, Light Skin	<a href="#">S012486</a>
3B Scientific Hemorrhage Control Leg Trainer, Light Skin	<a href="#">S012555</a>
3B Scientific Hemorrhage Control Arm Trainer	<a href="#">S04752</a>
3B Scientific Deluxe Human Skeleton with 3B Smart Anatomy	<a href="#">S171563</a>
3B Scientific Muscular Arm with 3B Smart Anatomy	<a href="#">S17136</a>
3B Scientific Muscular Leg with 3B Smart Anatomy	<a href="#">S171381</a>
3B Scientific Lungs with 3B Smart Anatomy and Master Series™ Heart, Diaphragm, and Larynx	<a href="#">S17155</a>

## Health Science

## Anatomy, Physiology &amp; Medical Technology

## Instruments &amp; Kits

## Diagnostic Pen Light

**For examining eyes.**

- Reliable robust construction
- Bright illumination
- Compact size
- Length: 5 in.



Cat. No.	Description	Quantity	Unit of Measure
<a href="#">S20671***</a>	Diagnostic Pen Light	1	Each

## Heavy Duty Cutter

**For cutting larger bones for cross sectional bone analysis.**

- Made of stainless steel
- Features single or double spring settings
- With side cutting action
- Length: 17.7 cm (7 in.)



Cat. No.	Description	Quantity	Unit of Measure
<a href="#">S08105</a>	Bone Shear Heavy Duty Cutter	1	Each

## Hemostatic Forceps, Curved

**Feature offset tips for accessing hard-to-reach areas during dissection.**

- Perform many functions, such as hold and pinch delicate veins and nerves, separate tissues
- Can be applied to various specimens, from small vertebrates to invertebrates, plants, and other biological materials
- Length: 5 in.



Cat. No.	Description	Tip Style	Quantity	Unit of Measure
<a href="#">S72120</a>	Hemostatic Forceps	Curved	1	Each

## Eisco™ Stainless Steel Artery Forceps

**Feature straight tips with serrated jaws and a box joint.**

- Made from high quality stainless steel
- Designed for delicate and accurate work
- Intended for science education purposes only
- Forceps should never be used on humans or other living specimen of any kind
- Jaw length: 1 in.
- Non-sterile
- Length: 5 in.



Cat. No.	Description	Tip Style	Quantity	Unit of Measure
<a href="#">S27473</a>	Artery Forceps, Straight	Straight	1	Each

## Stethoscopes Set

**Used to monitor heart rate or measure blood pressure.**

- Set of four stethoscopes for hands-on learning
- Multiple colors



Cat. No.	Description	Quantity	Unit of Measure
<a href="#">S81689</a>	Stethoscopes	1	Pack

## United Scientific™ Stethoscopes

**Listen to vital signs.**

- Ideal for the classroom, especially in the study of respiration and circulation

### Bowles Type Stethoscope (S99444)

- Adjusting chrome plated binaural
- PVC Y-tubing

### Dual Earpiece-Teaching Stethoscope (S11008)

- 3.8 cm Bowles chestpiece and two sets of binaurals joined together so the teacher and student can listen simultaneously
- PVC Y-tubing

**⚠️ ALERTS: This item is intended for educational purposes only.**



Cat. No.	Product Type	Quantity	Unit of Measure
<a href="#">S99444</a>	Bowles Type Stethoscope	1	Each
<a href="#">S11008</a>	Dual Earpiece-Teaching Stethoscope	1	Each

## Eisco™ Micro Plus Stethoscope

High grade, stainless steel stethoscope for adults.

- Comfortable ear tips with alternate sized extra pair
- Includes spare ear tips and diaphragm for comfort

**⚠️ ALERTS: This item is intended for educational purposes only.**



Cat. No.	Description	Quantity	Unit of Measure
<a href="#">S23682</a>	Micro Plus Stethoscope	1	Each

## Baseline™ Fingertip Pulse Oximeter

Measures and displays real-time pulse and SpO<sub>2</sub> level.

- Compact
- Lightweight
- Large, easy-to-read display
- Automatically shuts off when not in use
- Comes with wrist lanyard



Cat. No.	Description	Quantity	Unit of Measure
<a href="#">S20764</a>	Fingertip Pulse Oximeter	1	Each

## Eisco™ Dial Type Blood Pressure Apparatus

Dial type apparatus with hook-and-loop fastening cuff.

- High quality inflammation rubber bulb
- Includes carrying case



Cat. No.	Description	Quantity	Unit of Measure
<a href="#">S23638</a>	Blood Pressure, Dial Type	1	Each

## Advanced Manual Inflate Large Cuff Blood Pressure Monitor

Fast and accurate blood pressure measurement.

- Offers two innovative features, the Pressure Rating Indicator™ and Irregular Heartbeat feature
- Pressure Rating Indicator provides a snapshot of your blood pressure classification based on the measurements, and eliminates the guesswork

**⚠️ ALERTS: This item is intended for educational purposes only.**



Cat. No.	Description	Quantity	Unit of Measure
<a href="#">S37585</a>	Manual Inflate Blood Pressure Monitor	1	Each

## Urinalysis Using Simulated Urine

One of the oldest medical diagnostic tests performed.

Students will:

- Use simulated urine to avoid the unpleasantness of using the real thing
- Examine simulated urine factors such as pH, color and clarity, as well as test for the presence or absence of proteins, glucose and calcium
- Examine samples microscopically to determine if any crystals are present in the sample



**Urinalysis Using Simulated Urine Kit (S98668A) includes:**

- Kit with simulated urine samples (250 mL each of patient X, patient Y, patient Z, control), Benedict's reagent (25 mL), biuret solution (25 mL), Sulkowitch's reagent (25 mL), pH test strips, microscope slides, coverslips, graduated plastic cups (30 mL), graduated pipets (1 mL)
- Teacher's guide, student study guide copymasters

**Simulated Urine Refill (S37732) includes:**

- 4 x 250 mL each of simulated urine samples: Patient X, Patient Y, Patient Z, and Control

**COMPLIANCE:** This package conforms to 49CFR 173.4

Cat. No.	Description	Quantity	Unit of Measure
<a href="#">S98668A*</a>	Urinalysis Using Simulated Urine Kit	1	Each
<a href="#">S37732</a>	Simulated Urine Refill	1	Each



Log in to your account on **fisheredu.com** to see your discounts.



**HEADLINE DISCOVERIES**  
SCIENCE HAPPENS

Keep informed and check out the latest edition at **fisheredu.com/headlinediscoveries**.



## Artificial Urine

### Simulated urine.

- Quantity: 500 mL
- To identify variety of physiological conditions with urine test strips; Exception: S07903 (Artificial Urine with Ketone) is not designed for use with test strips
- Grade 7 to 14



Cat. No.	Product Type	Quantity	Unit of Measure
<a href="#">S07900</a>	Artificial urine with Vitamin C	1	Each
<a href="#">S07901</a>	Artificial urine with Phosphates	1	Each
<a href="#">S07902</a>	Artificial urine with Albumin	1	Each
<a href="#">S07903</a>	Artificial urine with Ketone	1	Each
<a href="#">S07904</a>	Artificial urine with Glucose	1	Each
<a href="#">S07905</a>	Artificial urine Set of 4 (Control, with phosphates, albumin, glucose)	1	Each
<a href="#">S07906</a>	Artificial urine Control	1	Each

## Kidneys and Blood Filtration

### Learn the role of the kidney in blood filtration and waste removal.

- Discover the many functional tasks performed by nephrons
- Students will create an artificial kidney model to filter simulated blood
- Visually determine if filtration of the simulated blood has occurred
- Chemically test the resulting filtrate to detect any waste material removed by the kidney
- Contains enough materials for 15 groups

- Grade 7 to 14

#### Kit Includes:

- Simulated unfiltered blood (100 mL)
- Dialysis tubing (15 pieces)
- 15 plastic cups
- 15 pipets (1 mL)
- 30 salt test strips
- 30 urea test strips



Cat. No.	Description	Quantity	Unit of Measure
<a href="#">S98651***</a>	Kidneys and Blood Filtration Lab	1	Each

## Kemtec™ Tallquist Hemoglobin Scale

### Allows quick assessment of blood hemoglobin levels.

Apply blood and allow to absorb into one of the test papers. Compare the color scale to determine the percent and weight of hemoglobin in blood under normal and anemic conditions.

- Includes color chart and 150 test papers
- Grade 9 to 14

**⚠️ ALERTS: Choking hazard (1) Small parts. Not for children under 3 yrs.**



Cat. No.	Description	Quantity	Unit of Measure
<a href="#">S06452</a>	Hemoglobin Scale	1	Each

## Kemtec™ Blood Typing with Saliva Kit

Students use their own saliva to determine their ABO blood type from the antigen secretors found in their saliva.

- Provides real anti-sera for demonstrating true ABO blood typing agglutination reactions
- Enhanced instructor's manual with background information, reproducible student protocols and worksheets, and complete answer keys
- Ideal for students in advanced biology, physiology, genetics, forensics, or biochemistry
- Antisera and blood cells are perishable, refrigeration prolongs shelf life
- Materials sufficient for up to 50 tests
- Grades 9 to 14
- Class size: 24 students

Materials must ship 2nd day air on ice in summer months. Reply card items are only shipped within the continental United States. Cells should be used within 20 days.

**⚠️ ALERTS: Choking hazard (1) Small parts. Not for children under 3 yrs.**

Cat. No.	Description	Quantity	Unit of Measure
<a href="#">S25080</a>	Blood Typing with Saliva Kit	1	Each

## Kemtec™ ABO Blood Typing Kit (with Red Blood Cells)

### Learn the genetic inheritance patterns of blood types.

- This kit includes preserved red blood cells and eliminates the need to draw blood samples from students.
- Kit should be ordered two weeks before needed.
- Contains both red blood cells and the antiserum needed to demonstrate real ABO blood typing agglutination reactions
- Students use real red blood cells provided, eliminating the need to draw blood samples
- Perform, compare, and contrast slide and test tube blood typing
- Red cells have a life expectancy of at least 20 days after arrival, but must be kept refrigerated
- Grades 9 to 14
- Class size: 36 students

**⚠️ ALERTS: Choking hazard (1) Small parts. Not for children under 3 yrs.**

Cat. No.	Description	Quantity	Unit of Measure
<a href="#">S17020</a>	Blood Typing Kit	1	Each



## Edvotek™ Blood Typing

Learn about determining blood types.

Blood typing is essential for blood transfusion and for managing other medical conditions.

**The activity includes:**

- Overview of blood typing
- Hands-on determination of simple simulation reactions for blood ABO typing
- Known and control samples for students to perform agglutination reactions to assign the various blood types
- Class size: 10 groups
- No blood or blood products are used in this experiment



Cat. No.	Description	Quantity	Unit of Measure
<a href="#">S94671</a>	Blood Typing	1	Each

## ABO/Rh Blood Typing Tray

Contains depression wells to perform ABO and Rh blood-typing.

- Made of styrene
- Washable and reusable
- Quantity: 100/Pk.
- Grade 7 to 14

**DISCLAIMERS:** DOT: Non regulated



Cat. No.	Description	Quantity	Unit of Measure
<a href="#">S37734</a>	Blood Typing Tray	1	Each

## Kemtec™ ABO Blood Simutype Kit

Use safe simulated human blood and anti-sera to study genetic inheritance of ABO blood types.

Blood typing has always been an important biology exercise because it introduces a number of key concepts. But the concern over AIDS, plus the general trend away from "invasive" laboratory work, has led to many schools to drift away from including this vital exercise. This kit provides an opportunity for schools to re-introduce blood typing studies.

- Students use genetic information to answer paternity questions, determine genotypes and phenotypes of blood donors, and determine possible donors and recipients for blood transfusions
- Ideal for biology, immunology, genetics, or forensics study
- Grades 7 to 12
- Class size: 24 students (with multiple reuses)

**⚠️ ALERTS: Choking hazard (1) Small parts. Not for children under 3 yrs.**



Cat. No.	Description	Quantity	Unit of Measure
<a href="#">S19316</a>	ABO Blood Simutype Kit	1	Each

## Blood Typing Anti-Sera, Anti-A, Anti-B and Anti-Rh

Use for blood typing of real human blood. Each vial contains enough anti-sera for 75 students.

- Available in 5 mL vials that contain enough anti-sera for 75 students
- Freeze-dried samples can be kept without refrigeration
- Shows negative results for Hepatitis B, HIV and EBV when tested with human-derived cell lines
- Grade 7 to 14
- Refrigeration recommended until used



Cat. No.	Includes	Quantity	Unit of Measure
<a href="#">S07802</a>	Freeze Dried Anti-A and anti-B	1	Each
<a href="#">S07803</a>	Freeze Dried Type A, B, and Rh	1	Each
<a href="#">S07804</a>	Freeze Dried Anti-Rh	1	Each

## Determination of Cholesterol Using Simulated Blood Kit

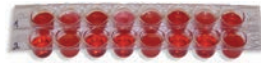
Allows students to measure cholesterol levels of four patients, then recommend individual treatment plans after analyzing their results.

- Cholesterol levels can have a major impact on your health and your risk of heart disease
- In this activity, students will measure the total cholesterol level for four patients using test strips and simulated blood
- After analyzing their results and the lifestyles of each patient, students will recommend treatment plans to help the patients lower their cholesterol
- The cholesterol levels for each patient will be re-tested, and students will determine whether or not their treatment plans were successful
- Kit contains enough materials for 15 groups
- Teacher's Manual and student study guide copy masters are included
- Grade 7 to 14



Cat. No.	Description	Quantity	Unit of Measure
<a href="#">S27124</a>	Simulated Cholesterol Blood Kit	1	Each

## Edvotek™ Blood-Based Cancer Diagnostics



Use specific cell surface protein markers of cancer cells for their identification.

- Cancer cells differ from normal cells by the combinations of proteins that are present on their surfaces. Antibodies against these proteins will specifically bind to cancer cells and not to normal cells. This allows early detection of cancer and potentially a way of delivering cancer therapies.
- In this simulation experiment the reaction of cancer cell markers and their corresponding antigens are demonstrated
- **Includes:** Instructions, microtiter plates, cancer cell markers, normal cell markers, transfer pipets, buffer
- Class size: 10 lab groups

Cat. No.	Description	Quantity	Unit of Measure
<a href="#">S94672</a>	Blood-Based Cancer Diagnostics	1	Each

## Diagnosis of White Blood Cell Counts Kit

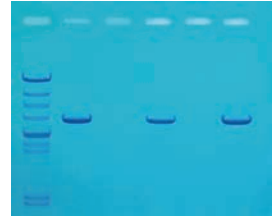


Allows students to perform white blood cell counts on five patient samples, and then suggest a possible diagnosis based on the determined cell levels.

- White blood cells, or leukocytes, only account for approximately 1% of the total number of cells found in blood
- They are still a critical part of the immune system, protecting the body from foreign invaders such as bacteria and viruses
- White blood cells counts are often performed as part of a medical diagnosis to determine if the level of white blood cells in a patient's blood is within or outside of the normal range
- In this activity students will perform white blood cell counts on five different patient samples and suggest possible diagnoses based on the white blood cell levels
- The samples contain safe, non-biological simulated cells that do not require staining
- Requires microscopes and hemocytometers (not included)
- Contains enough material for 15 lab groups
- Includes Teacher's Guide and Student Study copy masters
- Grade 7 to 14

Cat. No.	Description	Quantity	Unit of Measure
<a href="#">S27125</a>	White Blood Cell Count Kit	1	Each

## Edvotek™ Detection of Mad Cow Disease



Educate students about mad cow disease.

Bovine spongiform encephalopathy (BSE), better known as mad cow disease, is a fatal neurodegenerative condition in cattle that can devastate the beef industry. One mode of BSE transmission throughout cattle populations is by the inclusion of infected cow or sheep parts in cattle feed, a practice that was banned in the United States in 1997.

- Examine simulated PCR products from several feed mills
- Determine any possible violations of the 1997 ban
- Does not contain human DNA
- 8 gels

Cat. No.	Description	Quantity	Unit of Measure
<a href="#">S95607</a>	Detection of Mad Cow Disease	1	Each

## Kemtec™ AIDS Simutest Kit

Students run simulated ELISA tests for AIDS.



- Students experience the world of biotechnology and learn about HIV virus within this one hour lab investigation
- Students run eight patient samples in simulated ELISA to determine which patients may have contracted the HIV virus
- Includes simulated patient serums, conjugate, chromagen, and reusable treated ELISA microtiter plates
- Safe for student use as it contains no blood serum or infectious diseases
- For grades 11 to 14
- Class size: 24 students

**⚠ ALERTS: Choking hazard (1) Small parts. Not for children under 3 yrs.**

Cat. No.	Description	Quantity	Unit of Measure
<a href="#">S06451</a>	AIDS Simutest	1	Each

## Edvotek™ How Does a Doctor Test for AIDS?

### Students perform simulated ELISA testing for AIDS.

- Immunology-based diagnostic tests are used to detect various diseases
- Enzyme Linked Immunosorbent Assay (ELISA) tests for antibodies in the blood, which indicate infection
- Students perform a simulated ELISA test to identify "infected" samples and compare them to control samples
- Complete in 45 minutes
- No human blood or components are used in this experiment
- Class size: 10 lab groups



Cat. No.	Description	Quantity	Unit of Measure
<a href="#">S94603</a>	How Does a Doctor Test for AIDS	1	Each

## Edvotek™ What Is an Epidemic and How Does an Infection Spread?

### Students develop skills for accurately transferring solutions using pipets.

This experiment contains solutions to demonstrate how an infection is spread in a population through contact with simulated body fluids.

- Learn how infections are spread from one person to many others
- Transfer solutions from one tube to another
- Test a solution for the presence of an acid or a base
- Class size: 10 groups

**⚠️ ALERTS: This kit contains chemical(s) that may be harmful if used improperly. This kit is to be used by students only with teacher supervision.**

Cat. No.	Description	Quantity	Unit of Measure
<a href="#">S94602</a>	Epidemic / How Does an Infection Spread?	1	Each



## Kemtec™ Dental Cavity Potential Kit

### Kit promotes dental health.

Designed by Temple University's School of Dentistry, this kit allows students to quantitatively determine the bacterial content of their own mouths and to measure the rinsing capacity of their mouths.

- Provides students with enough information to radically change eating habits in order to prevent tooth decay
- Grades 6 to 12
- Class size: 24 students

**⚠️ ALERTS: Choking hazard (1) Small parts. Not for children under 3 yrs.**

Cat. No.	Description	Quantity	Unit of Measure
<a href="#">S25001</a>	Dental Cavity Potential Kit	1	Each



## Human Charts & Models

## Deluxe Human Torso Models

### Introduce your class to human anatomy with these economical and mounted life-size torsos – includes 3B Smart Anatomy.

- Head shows skull and brain on one side
- Lungs and heart show junctions to the major vessels
- Front heart wall comes off to show inner chambers
- Exhibits entire intestinal system including the liver with gallbladder, pancreas and removable two-part appendix flap
- All parts numbered and correspond to supplied key card to aid in lesson preparation
- Height: 34 in. (13.6 cm)



Cat. No.	Description	Quantity	Unit of Measure
<a href="#">S17150H</a>	Torso with Head, 12-Part	1	Each
<a href="#">S17150C</a>	School Torso with Head, 14-Part	1	Each
<a href="#">S171454</a>	Torso with Head, 18-Part	1	Each

## Healthcare Training and Education Supplies

Explore a complete range of healthcare education products to help prepare the nurses and allied health professionals of tomorrow.

### Nursing

Find a range of tools to develop basic knowledge and learn advanced skills.

- Clinical Classroom Facilities
- Infection and Spill Control
- Patient Care Training

### Allied Health

Train for specialized fields, like audiology and laboratory science.

- Primary and Emergency Care Education
- Diagnostic Education
- Health Science Specialties
- Other Specialty Training

Visit [fisheredu.com/healthcare-education-products](https://fisheredu.com/healthcare-education-products) to learn more.



## Deluxe Human Torsos

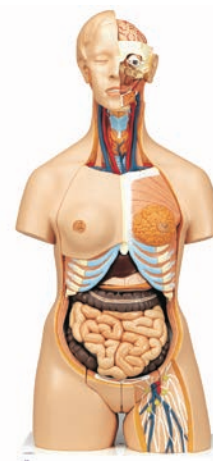
**28-part models are precision-crafted and hand-painted – includes 3B Smart Anatomy.**

- This deluxe dual-sex human torso offers everything you need for a detailed demonstration in human anatomy
- This model of a human torso comes complete with removable male and female genital inserts, opened neck and back section to study vertebrae, intervertebral discs, spinal cord, spinal nerves, vertebral arteries etc., a deluxe head with a 4-part brain and much more
- This detailed human torso model is truly for advanced demonstrations in biology or medical settings
- Dimensions: 34.3 x 15 x 9.8 in.

**Includes:**

- 7th thoracic vertebra, female chest wall
- 6-part head
- Female breast covering
- 2 lungs
- 2-part heart
- 2-part stomach
- Liver with gall bladder
- 4-part intestinal tract
- Front half of kidney
- 4-part male genital insert
- 3-part female genital insert with fetus

Cat. No.	Description	Quantity	Unit of Measure
<a href="#">S17139</a>	Deluxe Human Torso	1	Each



## Life-Size Male Muscular Figure, 37-Part

**Examine more than three dozen parts – includes 3B Smart Anatomy.**

- Hand-detailed, life-size model allows students to remove and examine muscles and various body organs.
- Right side of the model offers a complete view of the superficial musculature
- Left side shows the deeper muscles of the arm and leg
- Comes with a rolling base
- Dimensions: 71 x 43 x 19.5 in. (177.5 x 107.5 x 48.8 cm)
- Leg muscles (gastrocnemius, soleus with Achilles tendon, sartorius, and gluteus maximus)
- Brain (six parts)
- Heart (two parts)
- Organs of the thorax and abdomen (right and left lung)
- Diaphragm
- Stomach (two parts)
- Liver
- Kidney
- Intestine and part of the bladder
- Larynx (two parts)
- External sexual organs (two parts)
- Eye

Cat. No.	Description	Quantity	Unit of Measure
<a href="#">S17101R</a>	Male Muscular Figure	1	Each



## Muscle Torso with Head

**27-part model of the major muscles – includes 3B Smart Anatomy.**

- Dimensions: 37.5 x 23.5 x 14 in. (95.25 x 59.7 x 35.6 cm)

**Includes:**

- Fixed head with skull cap
- Brain, six parts
- Removable eyeball with optic nerve, eight parts
- Larynx, two parts
- Removable musculi sternocleidomastoid and m. pectoralis minor
- Breast and belly covering with both superficial and deep musculature
- Two lungs
- Heart with junctions to the major vessels
- Removable front heart wall, two parts
- Diaphragm
- Stomach, two parts featuring the front and rear half
- Liver
- Gallbladder
- Intestinal system with opened appendix
- Front halves of a kidney and the bladder
- Removable gluteus maximus
- Key card that details all of the numbered features

Cat. No.	Description	Quantity	Unit of Measure
<a href="#">S17186</a>	Muscle Torso with Head	1	Each



## Eisco™ Torso with Interchangeable Sex Organs Model, 24 Parts

**Dual sex model detailing human upper body anatomy with open back.**

- Life-size cut away spine showing head with nasal and buccal cavity, half brain, eye with optic nerve
- Male genital organs in four parts and female genital organs in two parts with embryo in third month of pregnancy
- Back shows vertebral column, spinal cord with nerve endings and removable seventh cervical vertebra
- Removable female breast with rib insertions, heart in two parts, two-lung halves, liver with gall bladder, two-part stomach, large and small intestines with appendix flap opening and cover, half of kidney
- Base-mounted and numbered with English key card
- L x W x H: 15 x 9.5 x 35 in. (38 x 24 x 89 cm)

Cat. No.	Description	Quantity	Unit of Measure
<a href="#">S15533</a>	Model, Torso with Interchangeable Sex Organs	1	Each



## Muscle Torso, Dual Sex, with Pregnancy Insert

**Has 31 removable parts – includes 3B Smart Anatomy.**

- Head with nose and mouth cavity
- Pharynx with skull base exposed
- Four-part brain half with arteries
- Six-part eyeball with optic nerve
- Deltoids, chest and belly with superficial and deep musculature
- Two lungs
- Heart with junctions to the major vessels and detachable two-part front heart wall
- Two-part front and rear half of a stomach
- Liver, gallbladder and small intestine
- Entire intestinal system with a pancreas
- Three-part transverse colon with an appendix flap and front kidney half
- Three-part female genital insert with removable fetus in the third month of pregnancy
- Four-part male genital insert with a removable penis
- Back and neck opened from cerebellum to sacrum, with removable seventh thoracic vertebra

Cat. No.	Description	Quantity	Unit of Measure
<a href="#">S17150F</a>	Muscle Torso, Dual Sex, with Pregnancy Insert	1	Each



## Muscular Model, 33 Parts

**Comprehensive anatomy study – includes 3B Smart Anatomy.**

Make sense of human anatomy with this one-half life-size model featuring 33 parts and interchangeable reproductive organs.

- Anatomical details conform closely to the human body
- Shows superficial and deep muscles, vessels and nerves and internal organs
- Mounted on stand

- Removable arms, muscles, calvarium and thoracic cover
- Height: 33 in. (82.5 cm)

**Dissectible parts:** Body, calvarium (skull), brain, stomach, liver, partial intestine with flap, female genitals, male genitals, eight muscles of the left leg and right arm and left arm and five muscles

Cat. No.	Description	Quantity	Unit of Measure
<a href="#">S17150D</a>	Muscular Model, 1/2 Life Size	1	Each



## Mini-Musculature Figure Model

**One-quarter life-size with full-size value – includes 3B Smart Anatomy.**

Our Mini-Musculature Figure Model stands only 22.5 in. (56.3 cm) tall, yet provides big value

- Two-part model gives accurate, detailed representation of the male muscular system
- Depicts and numbers superficial and deep muscles and tendons, blood supply and drainage, and major nerves

- Shows female mammary gland on the detachable thoracic/abdominal torso covering
- All major internal organs appear lifelike and have numbered parts keyed to the manual

Cat. No.	Description	Quantity	Unit of Measure
<a href="#">S17151</a>	Mini-Musculature Figure Model	1	Each



## Muscular Anatomy Model

**For anatomical studies – includes 3B Smart Anatomy.**

- Mounted on a roller stand for portability
- Supplied with a detailed key card
- 3/4 life size
- Dimensions: 54 × 19.5 × 16.5 in. (135 × 48.8 × 41.3 cm)
- Head with removable calvarium and three-part brain
- Trunk with right leg and portion of a shoulder
- Right arm
- Left arm with scapula and five removable muscles
- Left leg with eight removable muscles
- Thoracic and abdominal wall
- Right mammary gland
- Lungs, four parts
- Thymus
- Heart, two parts
- Diaphragm
- Liver with gallbladder
- Stomach, two parts
- Duodenum and pancreas
- Male genitalia, four parts
- Female genitalia, two parts

### 23-Part Model

Designed primarily for studies of the musculature since it has no removable internal organs.

- Head with removable calvarium
- Trunk with a right leg and portion of a right shoulder
- Right arm
- Left arm with five removable muscles
- Thoracic and abdominal cover
- Two-part female genitalia
- Left leg with eight removable muscles

### 45-Part Model

Models the human muscular system, vessels, nerves and partly dissectible organs.



Cat. No.	Description	Quantity	Unit of Measure
<a href="#">S17168A</a>	Muscular Anatomy Model, 23-Part Master Series	1	Each
<a href="#">S17168</a>	Muscular Anatomy Model, 45-Part Master Series	1	Each

## Eisco™ Human Torso Model

**Life size showing head with nasal and buccal cavity, half brain, eye with optic nerve for students.**

- Removable two lung halves, heart in two parts, liver with gall bladder, two part stomach, large and small intestines with appendix flap opening and cover, half of kidney
- Male genital organs in four parts and female genital organs in two parts with embryo in the third month of pregnancy
- Back shows vertebral column, spinal cord with nerve endings and the first, fifth and seventh dorsal vertebra is removable
- Mounted on base
- 28 parts, open back, dual sex
- Numbered with English key card
- Size of 38 x 24 x 90 cm (14.96 x 9.44 x 35.43 in.) approx.



Cat. No.	Description	Quantity	Unit of Measure
<a href="#">S09584</a>	Model, Human Torso 28 Part	1	Each

## Muscular Arm

**Six-part, three-quarter life-size left arm to study musculature – includes 3B Smart Anatomy.**

- Provides a detailed view of superficial and subjacent muscles, tendons, vessels, nerves, and bones of the hand, arm and shoulder
- Five removable muscles aid in the understanding of the muscular structure and attachments
- Height: 22.75 in. (57.8 cm)
- Includes stand



Cat. No.	Description	Quantity	Unit of Measure
<a href="#">S17136</a>	Arm with Muscles	1	Each

## Deluxe Human Skeleton

**Medical-grade skeleton works for both instructional illustration and chiropractic demonstration – includes 3B Smart Anatomy.**

Highly detailed, unbreakable plastic model is natural cast and presents muscle paintings, joint ligaments, numeration of bones and flexible spine with nerve endings.

- Deluxe skull is dissectible into calvarium, base of skull and lower jaw
- Position and spacing of teeth are reproduced from a natural denture
- Special mounting of rib cage maintains proper positioning
- Detachable skull, left arm and leg
- Right side presents muscle insertions in blue and origins in red; left side of skeleton displays more than 300 nominated bones, fissures and foramina
- M. iliocostalis and M. longissimus are color-contrasted for clarity
- Shoulder, elbow, hip and knee of the right side provided with life-like ligaments and movable joints
- Flexible spine allows natural movement and features a herniated disc, protruding nerves and vertebral artery
- Rotation and movement of skull on first and second cervical vertebrae can also be demonstrated
- Available mounted with pelvic mount or on hanging stand

- Height: 67 in. (170 cm)
  - **Includes:** manual and dust cover
- Skeleton with Muscle Origins and Insertions (S07912)**

Shows structural interaction between bones and muscles.

Includes all features of adult skeleton (S17133B) with the addition of color to the right half of the skeleton to show muscle origins and insertions. The perfect model for advanced human physiology courses, its tough vinyl plastic construction holds up to classroom use.

- On left side of skeleton over 600 structures, such as muscle origins (red), insertions (blue) are shown
- Hand-numbered bones, fissures and foramina are shown on right side
- Made from durable, unbreakable synthetic material
- Mounted on a stable metal hanging stand with five casters
- Natural size, anatomically accurate and realistic weight of around 200 bones
- Three part assembled skull
- Individually inserted teeth
- Removable limb

**WARRANTY:** 3 year



Cat. No.	Description	Quantity	Unit of Measure
<a href="#">S171564</a>	Deluxe Human Skeleton	1	Each
<a href="#">S17138A</a>	Skeleton with Muscle Origins and Insertions; Height: 66.9 in. (169.9 cm)	1	Each
<a href="#">S07912</a>	Skeleton with Muscle Origins and Insertions; Height: 75.8 in. (192.5 cm)	1	Each

## Muscular Leg

**Nine-part left leg defines the muscular process – includes 3B Smart Anatomy.**

- Shows superficial and subjacent muscles, tendons, vessels, nerves and bones
- Three-quarters life size
- Height: 30 in. (76.2 cm)
- Includes stand



Cat. No.	Description	Quantity	Unit of Measure
<a href="#">S171381</a>	Leg with Muscles	1	Each

## Eisco™ Muscular Leg Model, 9 Parts

**Dissectible Life size model with nine parts.**

- Shows all muscles, tendons, nerves, blood vessels and bones of leg and foot
- Parts can be removed for detailed study
- Mounted on base numbered with English key card



Cat. No.	Description	Quantity	Unit of Measure
<a href="#">S15591</a>	Model, Human Leg Musculature, 9 Parts	1	Each

## Flexible Human Skeleton Model

**Medical-grade, natural-cast skeleton suitable for instructional and chiropractic demonstrations – includes 3B Smart Anatomy.**

- Made from unbreakable plastic material for classroom durability
- Deluxe skull is dissectible into three parts: calvarium, base of skull and lower jaw
- Position and spacing of teeth are reproduced from a natural denture
- Upper and lower extremities are flexibly mounted and removable
- Flexible spine allows almost all natural movements and features a herniated disc, protruding nerves and vertebral artery
- Rotation and movement of the skull on first and second cervical vertebrae can be demonstrated as well
- Height: 70 in. (177.8 cm)
- **Includes:** roller stand and dust cover

Cat. No.	Description	Quantity	Unit of Measure
<a href="#">S171562</a>	Flexible Human Skeleton Model	1	Each



## Adult Human Skeleton

**Premier line of skeletal models offers educators medical-grade quality – includes 3B Smart Anatomy.**

- Made of durable, unbreakable, washable plastic material
- Natural movements can be demonstrated with detachable arms and legs
- Detachable skull is divisible into three parts: calvarium, base and lower jaw
- All joints are properly articulated and wired, including the lower jaw, which articulates by means of springs
- Comes complete with roller stand and dust protection cover

### Life-Size Skeleton (S17133B)

- Measuring 70 in. (170 cm) tall, this pelvic-mounted model is an exact reproduction, natural cast from bones of an adult male
- Special mounting of the rib cage allows the skeleton to maintain proper positioning

### Mini Skeleton (S17137)

- Half natural size: 33 in. (80 cm)
- Carefully reproduced to keep all anatomical details and structures
- Hip joints are specially mounted so their natural rotation can be demonstrated

Cat. No.	Description	Quantity	Unit of Measure
<a href="#">S17133B</a>	Life-Size Skeleton on 5 ft. Stainless Steel hanging roller stand with 5 casters	1	Each
<a href="#">S17137</a>	Mini Skeleton on 5 ft. Stainless Steel hanging roller stand with 5 casters	1	Each



## Disarticulated Human Skeleton

**Supports individual study and authentic assessment – includes 3B Smart Anatomy.**

Made of durable plastic, skeleton kit includes all of the bones from an adult male skeleton.

- Show how each bone functions and fits amid the body's entire framework
- Examine individual bones, versus a fully assembled skeleton
- One hand and one foot are articulated with wire to show correct orientation of the bones
- The second hand and foot are disarticulated and packed in their own plastic bag
- Jaw is articulated with the aid of a spring
- All 24 vertebrae are strung together with a nylon cord to maintain proper sequence; the coccyx is also wired
- All 24 ribs are contained in a plastic bag
- All other bones, including the hyoid and the upper and lower extremities, are packed in a carton
- Skull's calvarium is sectioned horizontally for intercranial studies
- Weight: 10.58 lb.

Cat. No.	Description	Quantity	Unit of Measure
<a href="#">S17131B</a>	Disarticulated Human Skeleton (no painted parts)	1	Each



## Eisco™ Human Articulated Skeleton Model, Hanging

Life sized human skeleton model stands 64 in. tall.

- Three-part skull is removable for closer study
- Features realistic details, textures and bony landmarks
- Skeleton suspends from hanging stand with casters on base
- Material: PVC



Cat. No.	Description	Quantity	Unit of Measure
<a href="#">S13521</a>	Model, Skeleton Hanging	1	Each

## Eisco™ Disarticulated Skeleton Model

For students examining human skeleton.

- Life-Size, male model
- Made of durable PVC plastic
- Comes with one hand and one foot assembled



Cat. No.	Description	Quantity	Unit of Measure
<a href="#">S12819</a>	Disarticulated Skeleton	1	Each

## Eisco™ Human Skeleton Miniature Model With Stand

Miniature model for classrooms.

- Model gives general idea of bones
- Mounted on stand
- Height: 51 cm (20 in.)



Cat. No.	Description	Quantity	Unit of Measure
<a href="#">S15583</a>	Model, Human Skeleton	1	Each

## Eisco™ Miniature Flexible Human Skeleton

Miniature Flexible Human Skeleton includes realistic details and is perfect for individual or small group work.

- 8 in. human skeleton replica mounted on a plastic base for easy display
- Arms and legs are attached by threaded studs with nuts to allow for flexibility
- Knees, ankles, elbows and wrists are movable joints
- Includes a removable skull cap
- Features realistic details and textures that are ideal for basic examination of the human skeleton
- Made of durable and sturdy polymer
- Model is washable and easy to clean to withstand years of handling
- Base measures 4.5 x 4.5 in.

**NEW**



Cat. No.	Description	Quantity	Unit of Measure
<a href="#">S15011</a>	Micro Skeleton; Height 20 cm	1	Each

## United Scientific™ Life Sized Human Skeleton Model

**NEW**

Life Sized Human Skeleton Model includes a sturdy stand.

- This life-sized model features unbreakable plastic bones which were carefully cast to preserve the finest details.
- The mandible is hinged; the arms, legs and skull are removable; and the calvarium is sectioned to allow for study of the cranial vault.
- There is natural movement in the joints wherever possible.
- The jaw features a full set of teeth, three of which are removable for closer examination.
- The spinal column shows the spinal cord, nerve exits, vertebral arteries, and a herniated disk.
- The skeleton is mounted in an upright position on a heavy duty base with smooth gliding casters.
- A dust cover and detailed key are included.
- Height: 170 cm (5 ft., 7 in.).



Cat. No.	Description	Quantity	Unit of Measure
<a href="#">S82883***</a>	Life Sized Human Skeleton Model	1	Each



## Eisco™ Human Life Size Skull Color Coded Model

This life size skull is hand painted and comes in 3 parts.

- Three parts, including calvaria, base of skull, and mandible
- Hand painted, color-coded to show the structures of the human skull
- Mandible is articulated to demonstrate movement
- Model features realistic details, textures and bony landmarks
- Made of durable and sturdy plastisol polymer. This washable model is easy to clean and will hold up to years of handling.



Cat. No.	Description	Quantity	Unit of Measure
<a href="#">S13501</a>	Model, Skull Color Coded	1	Each

## Beauchene Adult Human Skull Model, 22 Parts

Can be disassembled into 22 individual bones – includes 3B Smart Anatomy.

The human skull consists of many individual bones that gradually grow together we develop and grow. This popular model makes the complex anatomic structure of the skull easy to understand. Easily disassembled, the individual bones can be reassembled using the inconspicuous, stable connectors attached at the slightly simplified skull sutures.

- Natural cast
- Dimensions: 8.3 x 5.5 x 6.3 in. (21 x 14 x 16 cm)

**Includes the following individual bones:**

- Parietal bone (left and right)
- Occipital bone
- Frontal bone
- Temporal bone (left and right)
- Sphenoid bone
- Ethmoid bone
- Vomer bone
- Zygomatic bone (left and right)
- Upper jaw (maxilla) with teeth (left and right)
- Palatine bone (left and right)
- Nasal concha (left and right)
- Lacrimal bone (left and right)
- Nasal bone (left and right)
- Lower jaw (mandible) with teeth



Cat. No.	Description	Quantity	Unit of Measure
<a href="#">S98673</a>	Model, Human Adult Skull, Bone Colored	1	Each
<a href="#">S98674</a>	Model, Human Adult Skull, Didactic Colored	1	Each

## Half of Head and Neck

See both internal and external features – includes 3B Smart Anatomy.

Two-sided, life-size vinyl plastic model shows both internal and external features of the head and neck.

- One side demonstrates musculature and the most important surface arteries, veins and nerves
- The opposite side shows a median section illustrating inner anatomy
- Nondetachable model mounted on stand with base
- Dimensions: 9 x 7 x 18 in. (22.5 x 17.5 x 45 cm)



Cat. No.	Description	Quantity	Unit of Measure
<a href="#">S17106-1</a>	Model, Half of Head and Neck	1	Each

## Eisco™ Human Eye Model in Bony Orbit

Enlarged eye model for detailed anatomic studies.

- Nine parts in bony orbit
- Removable upper half eye ball is dissectible into six parts
- Two muscles controlling the eye ball are removable
- Mounted on base
- Numbered with English key card
- Approximate Dimensions (L x W x H): 12.9 x 9 x 7.8 in. (33 x 23 x 20 cm)



Cat. No.	Description	Quantity	Unit of Measure
<a href="#">S15546</a>	Model, Human Eye in Bony Orbit	1	Each

## Eisco™ Prehistoric Man Skull Set

Set of six natural-sized replicas of prehistoric skulls.

- Natural-sized replica of prehistoric skulls

**Includes:**

- Afarensis cranium
- Africanus cranium
- Habilis cranium
- Erectus cranium
- Neanderthalensis cranium
- Steinheim skull



Cat. No.	Description	Quantity	Unit of Measure
<a href="#">S15607</a>	Model, Prehistoric Man Skull Set	1	Each

## Functional Joint Models

Life-size, vinyl plastic ligamented joint models simulate actual joint movement – includes 3B Smart Anatomy.

**Elbow Joint (S17134-1)** consists of a portion of the upper arm with a complete radius and ulna

**Shoulder Joint (S17134-2)** consists of the scapula with part of the clavicle and the top portion of the humerus

**Hip Joint (S17134-3)** demonstrates rotations of the femoral head in the socket

**Knee Joint (S17134-4)** consists of part of the femur, and upper parts of the tibia and fibula



Cat. No.	Description	Dimensions (L x W x H)	Quantity	Unit of Measure
<a href="#">S17134-1</a>	Functional Elbow Joint Model	4.7 x 4.7 x 15.4 in.	1	Each
<a href="#">S17134-2</a>	Functional Shoulder Joint Model	6.3 x 4.7 x 7.9 in.	1	Each
<a href="#">S17134-3</a>	Functional Hip Joint Model	6.7 x 4.7 x 13.0 in.	1	Each
<a href="#">S17134-4</a>	Functional Knee Joint Model	4.7 x 4.7 x 13.4 in.	1	Each

## Eisco™ Human Articulated Hand Bone Model

Life-size human articulated hand bone model provides an incredible amount of realism and detail. The flexible wire assembly allows for full movement demonstration.



- Life-size, anatomically accurate
- Realistic details, textures, and bony landmarks
- Ideal for both student and patient educational demonstrations
- Made of durable and sturdy PVC plastic
- Held together with flexible wire to allow for full range movement demonstration of the human hand
- Washable

Cat. No.	Description	Quantity	Unit of Measure
<a href="#">S27433</a>	Human Left Hand Model	1	Each
<a href="#">S27432</a>	Human Right Hand Model	1	Each

## Eisco™ Human Clavicle Bone Model



Life-size human clavicle bone model, commonly referred to as the collarbone, provides an incredible amount of realism and detail.

- Life-size, anatomically accurate model
- Realistic details, textures, and bony landmarks
- Made of durable and sturdy PVC plastic
- Ideal for both student and patient educational demonstrations
- Washable

Cat. No.	Description	Quantity	Unit of Measure
<a href="#">S27453</a>	Human Clavicle Model Left	1	Each
<a href="#">S27452</a>	Human Clavicle Model Right	1	Each

## Classic Tooth Model Series

Five representative types of adult dentition that are individually mounted on removable stands – includes 3B Smart Anatomy.



- Two-part lower incisor with longitudinal section
- Two-part lower canine with longitudinal section
- Lower single-root pre-molar
- Two-part lower twin-root molar with longitudinal section showing caries attack
- Three-part upper triple-root molar with longitudinal section and caries insert

Cat. No.	Description	Quantity	Unit of Measure
<a href="#">S90791</a>	Classic Tooth Model Series	1	Each



### FISHER SCIENCE EDUCATION

MAKING SCIENCE MATTER

Visit us online at [fisheredu.com](https://fisheredu.com) to learn more about our programs, services and resources.



### FEATURED SUPPLIERS

MORE FOR YOU

Visit [fisheredu.com/featuredsuppliers](https://fisheredu.com/featuredsuppliers) to learn more about enhanced products and promotional information.

## Eisco™ Human Lower Jaw Model

**Includes 16 extractable teeth and features a partial section of the jaw that can be removed for further study.**

- Anatomically accurate model
- Natural size and color
- Realistic details, textures, and bony landmarks
- Ideal for educational and medical demonstrations
- Made of durable, washable PVC plastic to withstand years of student and instructor use
- Use for individual study or as replacement for missing/damaged pieces to a full skeletal model set



Cat. No.	Description	Quantity	Unit of Measure
<a href="#">S27458</a>	Human Lower Open Jaw Model	1	Each

## Skin Model, 80X

**Represents sections of human skin with magnification of 80x – includes 3B Smart Anatomy.**

- Consists of three individual parts on a common stand
- Anatomical differences of skin sections are didactically represented in a clear, easily understandable manner
- Microscopic structures such as nerve, vessels and tactile corpuscles have been accurately and spatially represented on model



### Microanatomical representation of:

- Papillary layer (e.g., localized in the palm of hand)
- Reticular layer (e.g., localized at the back of hand) Longitudinal section through the human scalp with hair follicle and root sheath

### Dimensions

- Size: 34 x 39 x 15.5 cm
- Weight: 2.05 kg

Cat. No.	Description	Quantity	Unit of Measure
<a href="#">S06780</a>	Skin Model	1	Each

## Skin Cancer Model

**Vividly displays six different stages of malignant melanoma – includes 3B Smart Anatomy.**

- Enlarged eight times, this model shows great detail.
- Sides show the levels of melanoma invasion into the skin layers according to Clark (I-V), and the tumor thickness according to Breslow (in mm)
- Top view shows the individual stages of externally visible skin changes, allowing for an assessment according to the "ABCDE" criteria
- Five original color illustrations on the base show various types of malignant melanomas
- Dimensions: 5.6 x 4 x 4.6 in. (14 x 10 x 11.5 cm)



Cat. No.	Description	Quantity	Unit of Measure
<a href="#">S90793</a>	Skin Cancer Model, Enlarged 8X	1	Each

## Brain Models

**Different separations of the brain expose different levels of detail and complexity – includes 3B Smart Anatomy.**

- Vinyl plastic models are nonbreakable and natural cast
- Rest on a form-fitting molded base
- Dimensions: 5 x 6 x 5 in. (12.7 x 15.2 x 12.7 cm)



### Two-Part Brain (S17108)

- Median section divides brain into two sections

### Eight-Part Brain (S17110)

- Each median section is dissectible into frontal with parietal lobes, temporal with occipital lobes, half of cerebellum, and half of brain stem
- Superb coloration highlights a variety of brain systems

### Two-Part Brain (S98678)

- Structures of the brain shown in one color
- Provides an introduction to the human nervous system and anatomy of the brain
- Removable base

Cat. No.	Description	Quantity	Unit of Measure
<a href="#">S17108</a>	Two-Part Brain	1	Each
<a href="#">S17110</a>	Eight-Part Brain	1	Each
<a href="#">S98678</a>	Introductory Two-Part Brain	1	Each

## United Scientific™ Human Brain Model, 8-Part



**Colorful 8-part model that provides a visual resource to guide discussions on the anatomy and functions of the human brain.**

- Constructed of durable PVC plastic, each model is hand-painted to help students identify lobes, and sections are securely held in place by embedded magnets
- Also included is a rotatable metal wire harness on a sturdy plastic base, and a laminated fold-out guide indicating more than 50 structures within the brain
- Guide rests in a slot molded into the plastic base



Cat. No.	Description	Quantity	Unit of Measure
<a href="#">S139450***</a>	Model, Human Brain Eight-Part	1	Each



## Eye in Orbit, Master Series™

Optic nerve and a cross section of the eyeball illustrate how the eye functions – includes 3B Smart Anatomy.

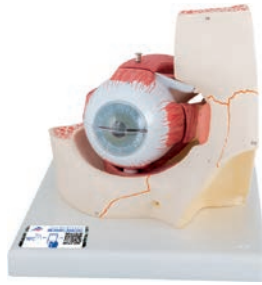
This model eye is mounted in its bony socket and is approximately three times life size. It features an optic nerve that can be seen as far as its entry into the base of the skull.

- Sectioned horizontally Constructed of durable vinyl plastic and mounted on a board
- Dimensions: 7 x 10 x 8 in. (17.5 x 25 x 20 cm)

### Separates into seven parts:

- Sclera with cornea (two parts)
- Vascular tunic with iris
- Vitreous body with retina
- Lens
- Five muscles of the eye
- Bony orbit

Cat. No.	Description	Quantity	Unit of Measure
<a href="#">S17116</a>	Model, Eye Human in Orbit	1	Each



## Eye Model, 6 Parts

Dissects into sclera with cornea and eye muscle attachments, choroid with iris and retina, lens and vitreous humour. The model is three times full size for optimal viewing and accessibility – includes 3B Smart Anatomy.

- Dissects into several parts:
- Both halves of sclera with cornea and eye muscle attachments
- Both halves of the choroid with iris and retina
- Lens
- Vitreous humour
- Dimensions (L x W x H): 3.5 x 3.5 x 5.9 in. (9 x 9 x 15 cm)
- Weight: 3.5 oz. (0.1 kg)
- Includes base

Cat. No.	Description	Quantity	Unit of Measure
<a href="#">S17118C</a>	Six-Part Eye Model	1	Each



## Eisco™ Human Eye Model, 7 Parts

Three times life size for hands-on exploration of the eye.

- Upper half of sclera with cornea and eye muscle attachments
- Both choroids with iris and retina
- Lens and vitreous humor are removable
- Features are numbered
- Supported on base
- Size: 4.72 x 4.72 x 6.69 in. (12 x 12 x 17 cm)

Cat. No.	Description	Quantity	Unit of Measure
<a href="#">S95929</a>	Human Eye Model, Seven-Part	1	Each



## Eisco™ Nasal Swab Training Model

12 in. nasal swab training model for the demonstration of nasopharyngeal testing.

- Visual demonstration of a nasopharyngeal swab test used to test for many respiratory viruses and airborne diseases
- Fully three-dimensional, with internal anatomy shown on cross-section
- Made of polyvinyl chloride (PVC) plastic for durability, and mounted onto a stand
- A great addition to a laboratory, a doctor's office, or a science classroom
- Designed by subject matter experts and hand-painted using vibrant, eco-friendly paint
- Model with stand measures 12 x 10 x 8 in.

Cat. No.	Description	Quantity	Unit of Measure
<a href="#">S28932</a>	Nasal Swab Training Model	1	Each



## Enlarged Ear, 4 Parts

The complex structures of the ear are exposed – includes 3B Smart Anatomy.

- This rugged vinyl plastic model shows the outer, middle and inner ear.
- Enlarged approximately three times life size
- Mounted on a board
- Dimensions: 13 x 7 x 7.5 in. (32.5 x 17.5 x 18.8 cm)

### Separates into four parts:

- Removable eardrum with hammer and anvil
- Labyrinth with cochlea
- Auditory/balance nerve (two-part)

Cat. No.	Description	Quantity	Unit of Measure
<a href="#">S17124</a>	Four-Part Enlarged Ear	1	Each



## Two-Part Heart Model, 3/4 Full-Sized

The heart's major functions and structures are numbered for easy memorization – includes 3B Smart Anatomy.

- This slightly reduced adult-size heart clearly shows the aorta, pulmonary artery, left and right ventricles, left and right atria, septum and both venae cavae.
- Removable front wall
- Hangs on its own stand
- Includes a key card
- Dimensions: 7.6 x 4.8 x 4.8 in. (19 x 12 x 12 cm)



Cat. No.	Description	Quantity	Unit of Measure
<a href="#">S17153C</a>	Two-Part Heart Model, 3/4 Full-Sized	1	Each

## Eisco™ Life Size Human Heart Model, 2 Parts

A portion of the heart model can be removed for further study.

- Vividly hand painted
- In two parts to reveal detailed internal anatomy
- Identification Key Card included
- Size: 8.0 x 6.0 x 6.0 in.



Cat. No.	Description	Quantity	Unit of Measure
<a href="#">S15622</a>	Model, Human Heart, Two-Part	1	Each

## Master Series™ Blood Circulatory System

See a schematic presentation of blood circulation – includes 3B Smart Anatomy.

- Detailed schematic of circulatory system in raised relief is approximately one-half life size
- Dimensions: 13 x 22 x 2 in. (32.5 x 55 x 5 cm)



Cat. No.	Description	Quantity	Unit of Measure
<a href="#">S171262</a>	Blood Circulatory System	1	Each

## Head and Neck Musculature Model with Brain

Representation of the superficial musculature and deep muscles, nerves and vessels – includes 3B Smart Anatomy.

- This 3/4 life-size head and neck musculature model has five parts including a three-part removable brain
- This model allows for in-depth study of the head and neck due to detailed representation of the superficial and deep musculature
- Size: 36 x 18 x 18 cm



Cat. No.	Description	Quantity	Unit of Measure
<a href="#">S17168C</a>	Head and Neck Musculature Model, 5 parts	1	Each

## MICROanatomy™ Artery and Vein

14 times larger than life – includes 3B Smart Anatomy.

- Model illustrates the reciprocal anatomical relationship of artery and vein, and the basic functional techniques of the venous valves
- Medium-sized muscular artery has two adjacent veins from the antebrachial area with adjoining fat tissue and muscle
- Left vein and middle artery are fenestrated in upper anterior segment to reveal wall structure in a cross section, longitudinal section, and top view
- Right vein is open throughout the anterior segment to display the orifice of a feeder vein and two venous valves
- Relief of two veins illustrates the functional aspect of the venous valves
- Dimensions: 10.4 x 7.6 x 7.4 in. (26 x 19 x 18.5 cm)

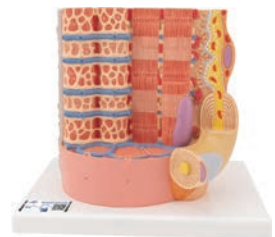


Cat. No.	Description	Quantity	Unit of Measure
<a href="#">S90777</a>	Microanatomy Artery and Vien	1	Each

## MICROanatomy™ Muscle Fiber Model

Magnified 10,000 times – includes 3B Smart Anatomy.

- Illustrates a section of a skeletal muscle fiber and its neuromuscular end plate. The muscle fiber is the basic element of the diagonally striped skeletal muscle.
- Dimensions: 9.4 x 10.4 x 7.4 in. (23.5 x 26 x 18.5 cm)



Cat. No.	Description	Quantity	Unit of Measure
<a href="#">S68279</a>	Microanatomy Muscle Fiber	1	Each

## MICROanatomy™ Bone Structure

**Extremely detailed model shows a typical structure of a tubular bone enlarged 80 times – includes 3B Smart Anatomy.**

- Three-dimensional section of a lamellar bone with typical elements identified to help understand its structure, and function with the characteristic osteons (also referred to as Haversian systems).
- Shows cross and longitudinal section planes through all levels of the bone
- Displays two-plane section through the inner structure of the bone marrow
- Graphically illustrates the interplay of components such as spongy and compact substance, endosteum, cortical substance, osteocytes and Volkmann and Haversian canals
- Mounted on a base
- Dimensions: 10.1 x 7.4 x 5.7 in. (26 x 19 x 14.5 cm)



Cat. No.	Description	Quantity	Unit of Measure
<a href="#">S90774</a>	Microanatomy Bone Structure	1	Each

## MICROanatomy™ Kidney

**Extremely detailed model shows the morphologic/functional units of the kidney – includes 3B Smart Anatomy.**

- Six model zones illustrate the fine tissue structures that serve the production of urine
- Longitudinal section of the kidney
- Section of the renal cortex and renal medulla
- Wedge-shaped section of a kidney lobe with a diagrammatic depiction of three nephrons with Henle's loops of different lengths, and of the vascular supply
- Diagrammatic illustration of an opened renal corpuscle with nephron, and light-microscopic transverse sections of the proximal, attenuated and distal segments of a renal tubule
- Dimensions: 9.2 x 9.9 x 7.4 in. (23.5 x 25.5 x 19 cm)



Cat. No.	Description	Quantity	Unit of Measure
<a href="#">S90780</a>	Microanatomy Kidney Model	1	Each

## MICROanatomy™ Digestive System

**Illustrates the fine tissue structure of the digestive system – includes 3B Smart Anatomy.**

- Model includes four characteristic sections of the digestive system: esophagus, stomach, small intestine and large intestine
- The front of the model is a magnified histological view of the fine tissue structures in individual sections of the digestive system
- The back of the model includes more interesting features to study
- Dimensions: 11.8 x 10.4 x 7.4 in. (29.5 x 26 x 18.5 cm)



Cat. No.	Description	Quantity	Unit of Measure
<a href="#">S90778</a>	Microanatomy Digestive System Model	1	Each

## Liver with Gallbladder, Pancreas and Duodenum

**Anatomical, base-mounted model offers detailed look at bladder, pancreas and duodenum – includes 3B Smart Anatomy.**

Features include:

- Ducts
- Duodenum
- Vessels
- Extra-hepatic ducts with gallbladder
- Main pancreatic duct and other orifices
- Dimensions: 1.6 x 8 x 7.2 in. (4 x 20 x 18 cm)



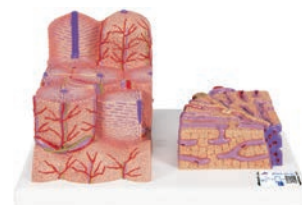
Cat. No.	Description	Quantity	Unit of Measure
<a href="#">S90798</a>	Liver with Gallbladder Pancreas and Duodenum Model	1	Each

## MICROanatomy™ Liver

**Study the liver in detail – includes 3B Smart Anatomy.**

Two-part model shows a magnified diagrammatic view of a section of the liver.

- The left portion highlights a liver section with several lobules
- The right portion is a magnified view of a lobule from the liver section on the left
- Dimensions: 6 x 10.4 x 7.4 in. (15 x 26 x 18.5 cm)



Cat. No.	Description	Quantity	Unit of Measure
<a href="#">S90779</a>	Microanatomy Liver Model	1	Each

## Eisco™ Kidney Section Model

The kidney section model is a set of three hand-painted models mounted to a board that demonstrate several anatomical features of the human kidney. The three models include a kidney cross section, nephron and blood vessels, and glomerulus cross section.



- Kidney cross section - 3X life size
- Nephrons and blood vessels - 120X life size
- Kidney glomerulus cross section - 700X life size
- 3 models mounted on same base
- Supplied with English key card
- Dimensions: approximately 56 x 30 x 7 cm

Cat. No.	Description	Quantity	Unit of Measure
<a href="#">S13492</a>	Kidney Section Nephron Model	1	Each

## Heart, Two Times Life-Size

Twice the size of a real heart, this model helps students to fully grasp the complex nature of the organ – includes 3B Smart Anatomy.



- Constructed of durable vinyl plastic
- Sectioned so both ventricles and atria open
- Shows valves and major blood vessels
- Dimensions: 13 x 7 x 8 in. (32.5 x 17.5 x 20 cm)

**⚠️ ALERTS: Not a toy. Product intended for ages 13 and up. May contain latex!**

Cat. No.	Description	Quantity	Unit of Measure
<a href="#">S17155B</a>	Heart, Twice Life Size Model	1	Each

## Master Series™ Lungs with Heart, Diaphragm and Larynx

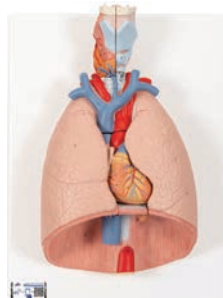
Life-size model with many removable parts – includes 3B Smart Anatomy.

**Features of the thorax model:**

- Displays the viscera of the thorax
- Durable vinyl construction
- Mounted on base for display
- Dimensions: 16 x 12 x 5 in. (40 x 30 x 12.5 cm)

**Contains these removable parts for added anatomical detail:**

- Two-part larynx
- Trachea with bronchial tree
- Two-part heart
- Subclavian artery and vein
- Vena cava
- Aorta
- Pulmonary artery
- Esophagus
- Two-part lung (front halves removable)
- Diaphragm



Cat. No.	Description	Quantity	Unit of Measure
<a href="#">S17155</a>	Lungs with Larynx Model, 7 Part	1	Each

## Lung Demonstration Model

Apparatus for classroom to demonstrate how lungs function. Partial vacuum inside the jar causes the lung shaped balloons to relax and contract.



- Housed within a partial vacuum
- Plastic construction to prevent breakage

**⚠️ ALERTS: Not a toy. Product intended for ages 13 and up. May contain latex!**

Cat. No.	Description	Quantity	Unit of Measure
<a href="#">S28099</a>	Lung Function Model	1	Each

## Vernier Science Education™ Vernier Spirometer

Make human respiratory measurements at rest and during moderate activity.

- Used to perform a variety of experiments related to air flow and lung volume
- Clear acrylic plastic construction
- Handle is made from black ABS plastic
- Removable flow head (I.D. 22mm, O.D.: 30mm) for easy cleaning and sterilization
- Differential pressure transducer
- Recommended for all grades
- Compatible Interfaces: LabQuest™ 2, Original LabQuest, LabQuest Mini, GoLink™, SensorDAQ™, NXT Sensor Adapter™, LabPro™, EasyLink™, TI-Nspire Lab Cradle™



**Specifications:**

- Flow rate:  $\pm 10\text{L/sec}$ .
- Dead Space: 93 mL
- Nominal Output: 128mV/(L/s)
- Detachable Flow Head (Dia. x L): 80.5 x 101.5mm
- Mass: 80g
- Handle Dimensions: 127 x 23 x 35mm
- Handle Mass: 85g
- Cable Length: 1.5m
- Default Sampling Rate: Computer: 100 samples/sec.; TI Calculator: 50 samples/sec.

**WARRANTY:** 5 year limited

**⚠️ ALERTS: This item is intended for educational purposes only.**

Cat. No.	Description	Quantity	Unit of Measure
<a href="#">S16251ND</a>	Spirometer	1	Each

## CT Bronchial Tree with Larynx

Created using computer tomography data of a human male – includes 3B Smart Anatomy.

- This unique model preserved the natural spatial 3D relations and the reciprocal location of the segmental bronchi
- Larynx with hyoid bone and epiglottis, and the trachea with primary and lobar bronchi are depicted in one color Larynx is detachable at the second tracheal cartilage and divisible in the median plane Epiglottis is mounted flexibly
- The various segmental bronchi are made of elastic material and depicted in various transparent colors so that they are easier to distinguish visually
- Dimensions: 8.8 x 7.2 x 14.8 in. (22 x 18 x 37 cm)



Cat. No.	Description	Quantity	Unit of Measure
<a href="#">S68295</a>	CT Bronchial Tree with Larynx	1	Each

## Digestive System Four-Part Model

Two-part stomach reveals interior walls – includes 3B Smart Anatomy.

- Life-size, vinyl plastic model demonstrates the digestive tract from mouth to rectum
- Nasal and oral cavities, pharynx, larynx with epiglottis and esophagus are median sectioned
- Two-part stomach is dissectible to reveal the interior wall, liver, gallbladder, pancreas, small intestine, colon and rectum
- Model separates into four parts and is mounted
- Dimensions: 31 x 13 x 4 in. (77.5 x 32.5 x 10 cm)



Cat. No.	Description	Quantity	Unit of Measure
<a href="#">S17158-4</a>	Digestive System Model	1	Each

## Nervous System

This nervous system relief model shows a schematic representation of the central and peripheral nervous systems – includes 3B Smart Anatomy.

- Securely mounted on a firm backing
- Features a schematic presentation of human central and peripheral nervous systems
- No removable parts, so it will remain intact for many years
- Approximately one-half life size – Dimensions: 32 x 13 x 2 in.

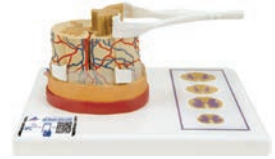


Cat. No.	Description	Quantity	Unit of Measure
<a href="#">S171131</a>	Nervous System	1	Each

## Spinal Cord Model with Nerve Endings

Magnified to a scale of about 5:1 – includes 3B Smart Anatomy.

- The spinal cord is formed by a central channel surrounded by “gray matter,” with an outer layer of “white matter”
- The base features illustrations of various cross sections through the white and gray matter at the neck, torso, lumbar and sacral regions
- Dimensions: 10.2 L x 7.5W x 5.2 in. H (26 x 19 x 13 cm)



Cat. No.	Description	Quantity	Unit of Measure
<a href="#">S96427</a>	Model, Spinal Cord with Nerve Endings	1	Each

## Eisco™ Lymph Nodes Model

Lymph nodes model with incoming and outgoing lymph vessels, germinal centre, sinus, capsule, trabecula, artery and vein. Mounted on a base, includes English key card.

- 3D model of lymph nodes, perfect for laboratory study
- Detailed anatomy includes incoming lymph vessel, germinal centre, sinus, outgoing lymph vessel, capsule, trabecula, incoming artery, outgoing vein
- Vividly hand painted
- Identification key card included (English)
- Supplied with stand
- Dimensions (H x W x L) 24 x 15 x 9.5 in. (61 x 38 x 24 cm)



Cat. No.	Description	Quantity	Unit of Measure
<a href="#">S29614</a>	Lymph Nodes Model	1	Each

## Eisco™ Model Human Testis

Model of human testis showing all details.

- Mounted on base
- Numbered with English key card
- Approx. dimensions: 5.1 x 5.1 x 10.6 in. (13 x 13 x 27 cm)
- Weight 350 g approx.



Cat. No.	Description	Quantity	Unit of Measure
<a href="#">S15572</a>	Model, Human Testis	1	Each

## Eisco™ Female Reproductive Organs Model

**Anatomically accurate representation of female reproductive organs.**

- For students to understand anatomy and physiology of ovary and reproduction
- Features anatomical structures of female reproductive organs, including ovaries, fallopian tubes, uterus, cervix and vagina
- Uterus, one fallopian tube and ovary are bisected to show internal structures
- Dimensions: 30 x 14 x 21 cm (11.8 x 5.51 x 8.26 in.)



Cat. No.	Description	Quantity	Unit of Measure
<a href="#">S15618</a>	Model, Female Reproductive Organs	1	Each

## Pregnancy Series

**Eight-stage pregnancy models – includes 3B Smart Anatomy.**

The 14-part series includes depictions of placenta, umbilical cord, ovaries, fallopian tubes and cervix. Eight natural-size, vinyl plastic models show the uterus with embryo and fetus in the following stages of pregnancy:

- First month
- Second month
- Third month
- Fourth to fifth month (removable fetus in prone position)
- Fifth month (removable fetus in breech presentation)
- Fifth month (removable fetus lying on its back)
- Seventh month (removable fetus)
- Twin fetuses in fifth month (removable fetuses)
- Each model is individually mounted on a stand and base
- Dimensions: 5 x 5 x 9 in. (12.7 x 12.7 x 22.9 cm)

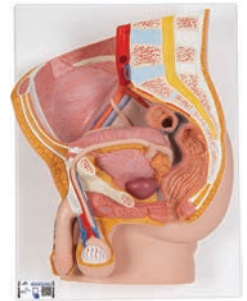


Cat. No.	Description	Quantity	Unit of Measure
<a href="#">S17101</a>	Embryo Set, Eight Parts	1	Each

## Male Pelvis Master Series™

**Male pelvis comes with removable parts – includes 3B Smart Anatomy.**

- Our life-size median section of the male pelvis outlines sex organs, bladder and muscles, and is suitable for teaching small or large groups.
- Presents parts of the abdominal and dorsal muscular system with lumbar vertebrae, and partial kidney
- Removable bladder and reproductive organs
- Pelvis dissects into two parts
- Use with Female Pelvis Master Series (S17143) for comparative studies



Cat. No.	Description	Quantity	Unit of Measure
<a href="#">S17144</a>	Model, Male Pelvis	1	Each

## Female Pelvis Master Series™

**Removable bladder and reproductive organs – includes 3B Smart Anatomy.**

- Our life-size median section shows how organs are situated in the female pelvis
- Presents parts of the abdominal and dorsal muscular system with lumbar vertebrae and partial kidney
- Removable bladder and reproductive organs
- Base-mounted
- Use with Male Pelvis Master Series (S17144) for comparative studies



Cat. No.	Description	Quantity	Unit of Measure
<a href="#">S17143</a>	Model, Female Pelvis	1	Each

## Simulators &amp; Medical Trainers

## Heart & Breath Sounds Simulator

The Heart and Breath Sounds Simulator unit includes two external sounders which students can use to auscultate the sounds with a stethoscope.

- This hand-held device simulates both heart and breath sounds and allows the determination of these by plugging in one of 7 different menus, each containing 16 different sounds
- Linking additional stethoscope sounders (see S00273), up to 15 students can auscultate at the same time. A loud speaker may also be connected
- Additionally, the unit has a volume control and two LEDs that illuminate during systole (heart menu) and expiration (breath menu)
- Virtually maintenance-free, the unit is powered by a 9 volt battery
- All data used in the menus are actual patient sounds. Sounds of the same name are from different patients in different menus to show appearance variations
- Cartridges with sounds required and not included



**NEW**

Cat. No.	Description	Quantity	Unit of Measure
<b>S00271***</b>	Heart Breath Sound Simulator	1	Each

## Breath Sounds

Breath Sounds for Sounds Simulator.

- Auscultation Sounds for S00271 Heart & Breath Sounds Simulator
- Weight: 0.11 lb.

**NEW**



Cat. No.	Description	Quantity	Unit of Measure
<b>S00272***</b>	Breath Sounds	1	Each

## Simple Simon Patient Care Manikin, Dark Skin

**NEW**

Full-size adult manikin with movable joints as well as soft fingers and toes for training of important basic nursing skills.




- For training of important basic nursing skills such as:
- Surgical draping
- Bathing and bandaging
- Oral and denture hygiene (movable jaw with removable dentures)
- Ophthalmic exercises
- Ear irrigation and application of otic drops
- I.M. injection (arm and buttock)

### Other Features:

- Legs can be removed for compact storage. Supplied with neck brace

Cat. No.	Description	Quantity	Unit of Measure
<b>S00229***</b>	Patient Care Manikin	1	Each



## Engage Your Students Wherever They Are

Keep your students safe and engaged with a selection of remote learning tools and materials.

Visit [fisheredu.com/remotelearning](https://fisheredu.com/remotelearning) to learn more.

**fisher** science  
education  
part of Thermo Fisher Scientific



## DANi Teen and Young Adult Advanced Patient Care Trainer

An advanced training solution for nursing and EMS procedures that simulates issues related to drug abuse, sexual assault, mental health or self harm.

- Accurately reproduces scenarios and challenging dynamics for learners to administer critical care for this important patient demographic. Learners can also practice general patient care, patient positioning, bandaging and wound dressing, oxygen administration.
- A realistic, hands-on learning experience ideally suited for classroom, in-situ, or hospital instruction.

### Trauma Simulation

- Physical assessment
- Airway, breathing, circulation
- Body trauma scan
- Wound care
- Self-harm/drug use moulage
- Asymmetric pupils

### Realistic Features

- Pupils
- Acne
- Smooth skin
- Tattoo sleeve
- Piercings and earrings
- Dyed, brown and black wigs
- Foot wounds

### Nursing Care

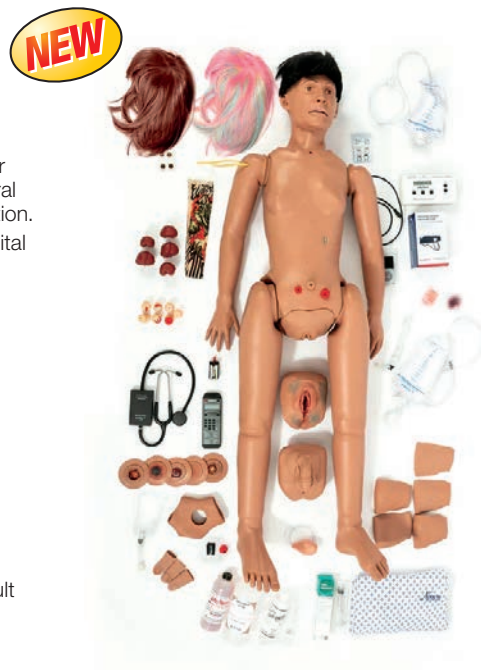
- Grooming
- Daily living assistance
- Eye/ear/hair care
- Oxygen
- Pericare
- Ostomy care
- Urinary catheter care
- Oxygen administration

### Female and Male Genitalia

- Includes female sexual assault genitalia

### Patient Positioning

- Superior range of motion, seating, laying, finger and toe manipulation



Cat. No.	Description	Quantity	Unit of Measure
<a href="#">S97911</a>	Color: Light	1	Each
<a href="#">S97912</a>	Color: Medium	1	Each

# HEADLINE Discoveries

Get Real-World Science  
in **Your Inbox**

Get the latest science news, classroom activities, and cutting-edge teaching tools delivered straight to your inbox every month.

Visit [fisheredu.com/HDSubscribe](http://fisheredu.com/HDSubscribe) to sign up for this free email.

**fisher** science  
education  
part of Thermo Fisher Scientific



- Pericare
- Ostomy care
- Urinary catheter care
- Oxygen administration

- Includes female sexual assault genitalia

- ### Patient Positioning
- Superior range of motion, seating, laying, finger and toe manipulation

- Manual ventilation with chest rise
- Intubation
- Ventilation
- Tracheostomy care
- Suctioning

- Gastrostomy
- Nasogastric procedures
- Airway/trach suctioning
- Enema
- Pap smear
- Pelvic exam
- Intravenous injections

- Grooming
- Daily living assistance
- Eye/ear/hair care
- Catheter
- Injection
- Oxygen
- Blood pressure

Cat. No.	Description	Quantity	Unit of Measure
<a href="#">S97913</a>	Color: Light	1	Each
<a href="#">S97914</a>	Color: Medium	1	Each

# DANi Teen and Young Adult Advanced Patient Care Simulator

**An advanced training solution for nursing and EMS procedures that simulates issues related to drug abuse, sexual assault, mental health or self harm.**

- DANi accurately reproduces scenarios and challenging dynamics for learners to administer critical care for this important patient demographic. Learners can practice on a comprehensive and complete simulation platform including patient monitoring capability and auscultation (heart and lung sounds).
- A realistic, hands-on learning experience ideally suited for classroom, in-situ, or hospital instruction.
- Basic Life Support (BLS) and Advanced Cardiac Life Support (ACLS)
- CPR with quality performance metrics, carotid pulse, intubation

## Trauma Simulation

- Physical assessment
- Airway, breathing, circulation
- Body trauma scan
- Wound care
- Self-harm/drug use moulage
- Asymmetric pupils

## Realistic Features

- Pupils
- Airway
- Acne
- Smooth skin
- Tattoo sleeve
- Piercings and earrings
- Dyed and black wigs
- Foot wounds

## Nursing Care

- Grooming
- Daily living assistance
- Eye/ear/hair care
- Catheter
- Injection
- Oxygen
- Blood pressure
- Pericare
- Ostomy care
- Urinary catheter care
- Oxygen administration

## Female and Male Genitalia

- Includes female sexual assault genitalia

## Patient Positioning

- Superior range of motion, seating, laying, finger and toe manipulation

## Respiratory Support

- Manual ventilation with chest rise
- Intubation
- Ventilation
- Tracheostomy care
- Suctioning

## Auscultation

- 6 anterior heart sites with 12 heart conditions
- 5 anterior, 6 upper posterior, 4 lower posterior
- 2 mid-axillary lung sites with 12 lung conditions

## Advanced Skills

- Gastrostomy
- Nasogastric procedures
- Airway/trach suctioning
- Enema
- Pap smear
- Pelvic exam
- Intravenous injections

## SKILLQUBE™ Patient Monitoring/Defibrillator

- ECG monitor (with additional patient vitals and monitored signals: ABP, SpO<sub>2</sub>, etCO<sub>2</sub>)
- Pacemaker
- Defibrillator
- AED
- Ventilator (generic)
- Instructor controlled scenario editor with library
- Auscultation, glucometer, thermometer, checklists, operating procedures
- Realistic laboratory values
- Optional CPR feedback with real-time evaluation (add-on)

**NEW**



Cat. No.	Description	Quantity	Unit of Measure
<a href="#">S97915</a>	Color: Light	1	Each
<a href="#">S97916</a>	Color: Medium	1	Each

## Pediatric Nurse Training Baby

**Advanced and realistic model with male and female features.**

**Includes:**

- Internal organs (heart, lung, intestine system, stomach, and bladder)
- Removable belly covering
- Interchangeable genital organs
- Soft ears
- Fully movable head, arms and legs

**It allows trainees to practice both basic and medical infant care such as:**

- Tracheotomy care
- Male and female catheterization
- Insertion of a tube into mouth or nose
- Enema insertion
- Femoral, gluteal intramuscular and subcutaneous injections
- Palpitation of fontanels

**Accessories include:** syringe, suction catheter, feeding tube, urinary catheter, urine collection bag, catheter lubricant and carrying bag.



## Set of Breast Self Examination Models

**Models have 5 different lumps that simulate easy and hard to find breast tumors.**

- 3 female breasts in cup size A, B and C, each with 5 different lumps that simulate easy and hard to find breast tumors which, as in real life, are more difficult to find in the larger breast.
- Suitable to learn and practice self examination, which is an important aspect of early detection.
- Delivered with carrying case.



Cat. No.	Description	Quantity	Unit of Measure
<b>S00278***</b>	Self Breast Exam Models Set	1	Each

## Blue Phantom Branched 4 Vessel Ultrasound Training Block Model

**Model includes four vessels.**

**Four vessels included:**

- 4 mm, 6 mm, and 8 mm branched vessels
- Pre-filled with red ultrasound fluid



Cat. No.	Description	Quantity	Unit of Measure
<b>S00237***</b>	4 Vessel Ultrasound Model	1	Each

## Giant Dental Care Model

**Three times Life-Size, shows the upper and lower half of an adult's dentition – includes 3B Smart Anatomy.**

- This giant dental care model, large enough to be seen from the back of a classroom, shows the upper and lower half of an adult's dentition.
- A flexible joint between the jaws allows easy movement of the dental care model.
- Teach kids the proper teeth cleaning techniques using the giant 14 in. toothbrush included



Cat. No.	Description	Quantity	Unit of Measure
<b>S00277***</b>	Giant Dental Care Model	1	Each

**CAREER TECHNICAL EDUCATION**  
A HEAD START ON STEM CAREERS

Visit [fisheredu.com/nursingcte](https://fisheredu.com/nursingcte) for a full list of products to support your nursing, med tech and other CTE Programs.

**REMOTE LEARNING**  
ENGAGE YOUR STUDENTS

Find tools and materials to keep your students engaged at [fisheredu.com/remotelearning](https://fisheredu.com/remotelearning).



## Urinalysis Using Simulated Urine

NEW

In this urinalysis activity, students will use simulated urine to avoid the unpleasantness of using the real thing while still performing actual tests used on real urine samples. Kit contains enough materials for 15 groups of students.

### Kit Includes:

- 4 Simulated Urine Samples, 250 mL Each
- Patient X
- Patient Y
- Patient Z
- Control
- 2 Bottles of Benedict's Reagent, 25 mL
- 2 Bottles of Biuret Solution, 25 mL
- 2 Bottles of Sulkowitch's Reagent, 25 mL
- 1 Package of pH Test Strips, 100/vial
- 1 Box Microscope Slides
- 1 Package of Coverslips
- 60 Graduated Plastic Cups, 30 mL
- 60 Graduated Pipettes, 1 mL

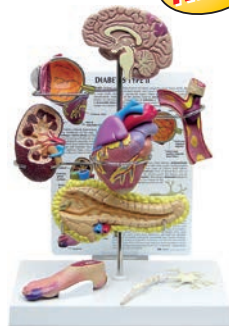


Cat. No.	Description	Quantity	Unit of Measure
<b>S00214***</b>	Simulated Urinalysis	1	Each

## Type II Diabetes Set

Illustrates the effects associated with Type II Diabetes.

- Includes miniature brain, eye, heart, kidney, artery, pancreas, neuron, and foot models.
- Education card illustrates effects associated with Type II Diabetes: stroke, ocular pathology, hypertensive heart disease, hardening of the kidney, hardening of the arteries, insulin resistance, neuropathy, and foot ulcerations.
- Model size: 10 in. tall
- Base: 8.8 x 6.25 in.



NEW

Cat. No.	Description	Quantity	Unit of Measure
<b>S00269***</b>	Type II Diabetes Set	1	Each

## Arterial Puncture Arm

NEW

Easy to use training aid is ideal for training students how to perform arterial blood draws and monitor blood gases.

- Puncture locations can be identified through palpation of the pulse of radial and brachial artery.
- Realistic arterial pressure produces a lifelike backflow of blood in the syringe, confirming proper needle location in the artery.
- Delivered with 2 syringes and tubules, artificial arterial blood, 2 replacement arterial sections and carrying case.



Cat. No.	Description	Quantity	Unit of Measure
<b>S00270***</b>	Arterial Puncture Arm	1	Each

## I.V. Training Hand

NEW

An economic and easy to transport model to train on I.V. injection.

Made of durable material for repeated use.

### Features include:

- Palpable veins, lifelike vein roll-over
- Suitable for blood sampling or fluid injection
- Supplied with carrying tray and artificial blood



Cat. No.	Description	Quantity	Unit of Measure
<b>S00276***</b>	I.V. Training Hand	1	Each

## Artificial Blood

NEW

Although not the same viscosity as real blood, simulation blood provides a sense of reality to any activity.

- For use with Life/form™ Products



Cat. No.	Size	Quantity	Unit of Measure
<b>S00283***</b>	1 L	1	Each
<b>S00284***</b>	1 gal.	1	Each



## Patient Care Manikin Basic

NEW



The patient care manikin simulates an adult, life-size patient, with interchangeable genitals. It can be positioned like a real patient with natural movement of the arms, legs, and joints. You can even make the manikin sit upright in the bed for treatments. It is made of durable, unbreakable, and water-resistant plastics for longevity in the everyday training use.

- Use the BASIC Patient Care Manikin to train and evaluate the following clinical nursing and patient care skills and competencies
- Bed care of a patient
- Bandaging (includes amputation stump)
- Communication skills, especially step by step explanation of care measures
- Prevention and care of bedsores (Decubitus)
- Decubitus evaluation (stages 2-4)
- Care of Diabetic Foot Syndrome (DFS)
- Intramuscular injections (buttocks)
- Subcutaneous injections (upper arms and thighs)
- Training with the 3B Scientific™ Patient Care Manikin BASIC meets the OBRA requirements of Nurse Aide Training and Competency Evaluation Programs (NATCEP).

Cat. No.	Description	Quantity	Unit of Measure
<a href="#">S58100</a>	Patient Care Full Body Manikin	1	Each

## Nikki the Nursing Manikin with Auscultation

NEW

Offers 11 anterior and 4 posterior auscultation sites with 42 high quality sounds powered by Cardionics – the Leader in Auscultation Simulation.

- The manikin was developed specifically for scenario-based simulation to improve competency in patient care and advanced nursing skills.



Cat. No.	Description	Quantity	Unit of Measure
<a href="#">S58101</a>	Patient Care Full Body Manikin	1	Each

## SimShirt System Auscultation Simulator

NEW

When worn by the standardized patient, the SimShirt simulates physiological conditions to test diagnostic and procedural skills. It is controlled wirelessly with easy to use software and responds in real time to diagnosis and treatment with direct feedback.



- The Shirt offers a basic version with all features of the Bionic Hybrid Simulator, except EKG and blood pressure.
- Includes SimScope Wifi and tablet. Reusable and washable (30°C), available in different sizes
- Can be worn by students and manikins
- Simulation of heart, breath, and bowel sounds
- RFID sensor tags integrated
- Simulates multiple physiological conditions
- Real time diagnostics and treatment capabilities

Cat. No.	Size	Quantity	Unit of Measure
<a href="#">S58111</a>	Medium	1	Each
<a href="#">S58108</a>	Large	1	Each
<a href="#">S58109</a>	X-Large	1	Each
<a href="#">S58110</a>	2 X-Large	1	Each

## I.U.D. Trainer

NEW

Hand-held trainer which is a suitable aid for understanding correct positioning of I.U.D. (Intrauterine Device) in the uterus.

- Made of durable plastic, the trainer features a transparent cover which allows easy visualization of insertion and placement of I.U.D. (I.U.D. not included).
- Size of trainer: 4.5 x 3 x 0.75 inches



Cat. No.	Description	Quantity	Unit of Measure
<a href="#">S00610***</a>	I.U.D. Trainer	1	Each

## TERi Geriatric Patient Care Trainer

A comprehensive male/female elderly patient care trainer for medical simulation. The trainer accurately represents human anatomy, and looks and feels realistic. Its weight is distributed to simulate how a patient's load when being lifted and carried by a healthcare team member.



### Passive Range of Motion

- Seating, laying, finger/toe manipulation with no effort from patient.

### Enhanced Aesthetics

- Soft silicone skin with noticeable normal and cancerous skin moles, stage 1 sacral ulcer and reddened skin folds.

### Grooming and Daily Living Assistance

- Bathing, clothing changes, denture placement/removal, hearing aid placement/removal, eye irrigation and optic drops, ostomy and urinary catheter care, hair care.



Cat. No.	Description	Quantity	Unit of Measure
<b>S97908</b>	Color: Light	1	Each

## TERi Geriatric Patient Skills Trainer

A comprehensive male/female elderly patient care trainer for medical simulation. The trainer accurately represents human anatomy, and looks and feels realistic. Its weight is distributed to simulate how a patient's load when being lifted and carried by a healthcare team member.



### Passive Range of Motion

- Seating, laying, finger/toe manipulation with no effort from patient.

### Cardiovascular Support

- Carotid pulses, CPR with quality performance metrics and auscultation.

### Intravenous, Injection, Subcutaneous Injection Sites

- Multiple locations equipped with standard arm IM injection pads.

### Nasogastric Tube Procedures

- Placement, lavage, gavage, feeding and suctioning.

### Enhanced Aesthetics

- Soft silicone skin with noticeable normal and cancerous skin moles, stage 1 sacral ulcer and reddened skin folds.

### Respiratory Support

- Manual ventilation with chest rise, oxygen administration, tracheostomy care, airway/trach suctioning. Airway intubation, ventilation and auscultation.

### Grooming and Daily Living Assistance

- Bathing, clothing changes, denture placement/removal, hearing aid placement/removal, eye irrigation and optic drops, ostomy and urinary catheter care, hair care.

### Indwelling Male and Female Urinary Catheterization

- Includes support for urethral and suprapubic catheters.

### Advanced Skills

- Urinary catheterization, enema administration, pelvic and prostate examination.



Cat. No.	Description	Quantity	Unit of Measure
<b>S97909</b>	Color: Light	1	Each



## Supporting Your Sustainability Journey

Wherever you are in setting goals to **pave a greener path forward**, the Fisher Science Education team is here to help.

Visit [fishersci.com/sustainability](https://fishersci.com/sustainability) to learn more.



## TERi Geriatric Patient Simulator

**A comprehensive male/female elderly patient care trainer for medical simulation. The trainer accurately represents human anatomy, and looks and feels realistic. Its weight is distributed to simulate how a patient's load when being lifted and carried by a healthcare team member.**



This complete simulation comes with auscultation and patient monitoring.

### Passive Range of Motion

- Seating, laying, finger/toe manipulation with no effort from the patient

### Cardiovascular Support

- Carotid pulses, CPR with quality performance metrics and auscultation

### Intravenous, Injection, Subcutaneous Injection Sites

- Multiple locations equipped with standard arm IM injection pads

### Nasogastric Tube Procedures

- Placement, Lavage, Gavage
- Feeding and suctioning

### Enhanced Aesthetics

- Soft silicone skin with noticeable normal and cancerous skin moles, Stage 1 sacral ulcer, Reddened skin folds

### Respiratory Support

- Manual ventilation with chest rise, Oxygen administration, Tracheostomy care, Airway/trach suctioning, Airway intubation, ventilation and auscultation.

### Grooming and Daily Living Assistance

- Bathing, clothing changes, Denture placement/removal, Hearing aid placement/removal, Eye irrigation and optic drops, Ostomy and urinary catheter care, Haircare

### Indwelling Male and Female Urinary Catheterization

- Includes support for urethral and suprapubic catheters

### Advanced Skills

- Urinary catheterization, Enema administration, Pelvic and prostate examination

Cat. No.	Description	Quantity	Unit of Measure
<a href="#">S97910</a>	Color: Light	1	Each

## Bandaging Simulator with Ostomy

**Simulator with 14 different wounds to practice wound management, cleaning and bandaging techniques.**

- Consists of a female torso with flexible, lifelike skin that realistically responds to adhesives and a range of bandaging procedures
- Wound closures feature surgical staples and sutures that cannot be removed
- Supplied in a carrying case

### Simulator features the following wounds:

- Thyroidectomy
- Mid-sternal split with chest tube drains (surgical staples)
- Mastectomy with simulated drain
- Cholecystectomy with simulated T-tube

- Laparotomy (surgical staples)
- Appendectomy
- Colostomy
- Ileostomy
- Abdominal hysterectomy (surgical staples)
- Thoractomy (surgical staples)
- Nephrectomy (surgical staples)
- Laminectomy
- Sacral decubitus ulcer (stage II)
- Leg amputation above-the-knee residual limb (surgical staples)

Cat. No.	Description	Quantity	Unit of Measure
<a href="#">S98685</a>	Bandaging Simulator	1	Each



## Trainer for Wound Care and Bandaging Techniques

**Allows students to practice a wide range of dressing and bandaging techniques.**

Students can practice wound care in conditions as close to reality as possible. Given the flexible structure of the material used, students can practice putting on and changing bandages and dressings in realistic conditions.

The torso features wounds and drain systems that patients often have after surgical procedures:

- Wound after a thyroidectomy, center
- Wound after a sternotomy (with drain), center
- Wound after a mastectomy (with drain), right
- Wound after a splenectomy (with drain), left
- Wound after a thoracotomy (pneumonectomy), right
- Wound after a median laparotomy (e.g. cystectomy), center
- Wound after an appendectomy, right
- Wound after a Pfannenstiel incision (e.g. C-section or abdominal hysterectomy), center
- Wound after a laminectomy, center; rear
- Wound after a nephrectomy (side incision)
- Wound after an amputation (leg residual limb), left
- Colostomy
- Decubitus (grade 2), center; rear



Cat. No.	Description	Quantity	Unit of Measure
<a href="#">S27333</a>	Wound Care Trainer	1	Each

## Hemorrhage Control Arm Trainer

**Improve pre-hospital patient care training with instructional and hands-on training of hemorrhage control, including wound packing and tourniquet application.**

### Arm and Skin:

- Trainer simulates full arm of adult male with realistic outer anatomy
- Skin is made of high quality SKINlike™ silicone to simulate human skin and tissue haptics
- Deep laceration or stab wound (5 cm)
- Large caliber gunshot wound through and through (GSW) – Shows bony landmarks and palpable vessel damage
- Junctional wound in the shoulder area
- Easy to clean and transport (bag included)
- Low-cost

### Bleeding:

- Bleeding of each wound is controlled with manual blood pump system simulating venous or arterial pulsatile blood hemorrhage
- Trainer functions as a stand-alone simulator but can be worn by a volunteer for added realism, and in field training using carrying strap of bag
- Bleeding can be simulated realistically, including direct feedback (stop of bleeding) when trainee successfully manages the hemorrhage – Bleeding stops when tourniquet has been correctly applied
- Secure blood reservoir (2 L) with manual blood pump system simulating venous or arterial pulsatile blood hemorrhage

- No back flow during wound packing
- Contains 250 mL of artificial blood concentrate

### Settings:

- Application of tourniquet can be made high and tight or 5 to 8 cm (2 to 3 in.) above the wound
- Each wound can be hidden with dedicated cover to offer modular injury scenarios
- Each wound bleeds independently
- No batteries needed

### Uses:

- Suitable for Tactical Combat Casualty Care (TCCC) and Civilian Casualty Care training
- For realistic training of bleeding control and management of traumatic injuries on the arm
- Trainer for hemorrhage control on upper extremity with realistic wound and bleeding simulation
- Trainees gain confidence in managing difficult bleeding using tourniquets and wound packing
- For field use

**DISCLAIMERS:** Note: Tourniquet not included



Cat. No.	Description	Quantity	Unit of Measure
<a href="#">S04752</a>	Hemorrhage Control Arm Trainer	1	Each

## Eisco™ Premium Practice Suture Kit

Designed by a physician, this kit includes everything needed to practice suturing skills, including a variety of wound types and needle sizes. The innovative plastic suture pad is durable and can be reused many times.



- Designed for practicing suturing skills
- Endorsed by professionals for medical, nursing and veterinary students, as well as for surgical, emergency and anesthesia residents
- Innovative suture pad is durable and does not tear, allowing each cut to be sutured multiple times
- Features a realistic texture and a variety of common cuts and lacerations, irregular wounds, and Y-shaped wound for corner stitches
- Eisco Exclusive: cuts with irregular widths to approximate a wound that has been cleaned of debris, dead skin, plus slits to practice securing chest tubes, catheters, drains, and central lines
- Dimensions: 6.5 x 5.75 x 0.5 in.
- **Complete practice kit (S27477) includes:** (1) suture pad, (1) needle holder, (1) toothed forceps, (1) fine suturing scissors, (5) braided silk sutures, (5) half circle needles, 19 mm & 37 mm, (2) tubing pieces
- For practice and educational use only

Cat. No.	Product Type	Quantity	Unit of Measure
<a href="#">S27476</a>	Practice Pad	1	Each
<a href="#">S27477</a>	Complete Practice Kit	1	Each

## Suture Practice Arm

Simulated limbs with soft vinyl skin over stitchable foam provide a life-like suturing experience for students.



- Realistic skin texture with wrinkles and pores
- Soft and pliable for easy sewing; sutures will not pull out when tightened
- Each limb has three "wounds" that can be sutured repeatedly until surrounding skin wears out; then, new wounds can be cut
- Over 100 cuts can be made on the trainer, and each can be sutured several times
- Includes starter suturing kit

Cat. No.	Description	Quantity	Unit of Measure
<a href="#">S06807</a>	Suture Practice Arm	1	Each

## Suture Practice Arm

Offers realistic anatomy that enables complex suture training.

- Movable fingers for suture training of challenging wounds between fingers
- Skin and subcutaneous tissue is differentiated for realistic suture experience
- Customized wounds can be inflicted by the instructor anywhere on the training arm
- Each cut can be sutured several times
- Surgical staples procedure is possible



Cat. No.	Description	Quantity	Unit of Measure
<a href="#">S27332</a>	Suture Practice Arm	1	Each

## Intramuscular Injection Simulator

Features palpable anatomical landmarks that help students identify the correct placement for intramuscular injections.



- Built-in fine electronics produce audio-visual feedback of the result, e.g. correct or incorrect injection, bone contact, or wrong location
- Additional trainings and control modes provide an immediate or subsequent performance check under training conditions
- The life-like silicone skin is durable and easy to exchange as needed
- **Injection Simulator - Upper Arm (S27329)** features all of the important anatomical palpable landmarks such as acromion and humerus
- **Injection Simulator - Upper Leg (S27328)** features all of the important anatomical, palpable landmarks such as patella and greater trochanter

### Includes:

- 2 AA batteries
- Detailed instruction manual
- Replacement skin
- 5 mL injection syringe
- 21 gauge (0.8 x 50 mm) injection needle

Cat. No.	Description	Quantity	Unit of Measure
<a href="#">S27329</a>	Intramuscular Injection Simulator - Upper Arm	1	Each
<a href="#">S27328</a>	Intramuscular Injection Simulator - Upper Leg	1	Each

## Advanced Four-Vein Venipuncture Training Aid

**Model permits the injection of fluids and withdrawal of blood.**

Allows user to improve competency and technique by progressing from easier, larger veins to the more difficult, smaller and deeper veins.

- Four barely discernable blue veins in three different sizes, with the fourth vein deeply placed in a semi-transparent, tissue-like material
- “Pop” is felt as the needle enters the vein, followed by a realistic “flashback” of simulated blood, confirming the proper needle placement
- Stain-resistant Dermalike™ material offers 50% less needle drag when accessing the underlying veins, improved tear resistance to allow twice as many “sticks,” no “oily/sticky” surface and requires no baby powder
- The blue veins are made of Dermalike V™, a material with properties more similar to real veins, as you do not use excessive force to access the veins compared to the latex tubing still being used by other manufacturers
- Size: 5 x 10 x 1.5 in.



Cat. No.	Product Type	Description	Quantity	Unit of Measure
<a href="#">S07960</a>	Dark Pigmentation	Venipuncture Trainer	1	Each
<a href="#">S07959</a>	Light Pigmentation	Venipuncture Trainer	1	Each

## I.V. Injection Arm

**Realistic I.V. injection training for healthcare and medical teams.**

Made of 3B SKINlike™ silicone, this injection arm is suitable for group instruction because of its high quality, stain resistance and soft, easy-to-clean material.

**Ideal for practicing:**

- Intravenous injections (basilic vein, cephalic vein, median cubital vein and dorsal venous rete of hand)
- Correct puncture of peripheral veins for blood sampling
- Positioning of a venous catheter
- Dimensions: 28.9 x 7.4 x 5.5 in. (74 x 19 x 14 cm)
- Weight: 6.2 lb. (2.8 kg)



Cat. No.	Description	Quantity	Unit of Measure
<a href="#">S96636</a>	I.V. Injection Arm Simulator	1	Each

## Twin Stim™ Digital Electrotherapy Unit

**A TENS and EMS combination for muscle stimulation and pain relief. The unit is a battery operated pulse generator that sends electrical impulses via electrodes to the body to reach the nerves and underlying muscle group.**



- Choice of five modes of TENS and two modes of EMS—synchronous and alternate
- Dual channel with isolation between channels
- Asymmetrical, bi-phasic square pulse wave form
- Stores 60 sets of operation records
- Adjustable pulse amplitude: 0 to 100mA peak into 500 Ohm load each channel
- Adjustable pulse rate: from 2 to 150Hz (1Hz/step)
- Adjustable pulse width: from 50 to 300 microseconds (10µS/step)
- Adjustable on time: 2 to 90 seconds (1 sec./step)
- Adjustable off time: 2 to 90 seconds (1 sec./step)
- Adjustable ramp time: 1 to 8 seconds (1 sec./step)
- Total recorded time: 999 hours
- Voltage: 0 to 50V
- Adjustable timer: from 5 to 60 minutes or continuous (adjustable in 5 minutes each step); Treatment time countdown automatically
- Dimensions (L x W x H): 10.1 x 6.1 x 2.45 cm

**WARRANTY:** 3 year

**DISCLAIMERS:** Note: Requires prescription.

Cat. No.	Description	Quantity	Unit of Measure
<a href="#">S20712</a>	Twin Stim Electrotherapy Unit	1	Each

## Patient Care Manikin PRO

**Developed for scenario-based patient care training.**

- Simulates an adult, life-size patient, with interchangeable genitals
- The flexible joint design allows users to place the manikin in a range of treatment positions
- Made of durable, unbreakable, and water-resistant plastics that can withstand everyday training

The following clinical nursing and patient care skills and competencies can be trained and evaluated:

### Patient and personal care:

- Transfer skills: lifting, carrying, and moving
- Bed care
- Position changing and alignment
- Bathing (genital care)
- Hair care (washing, combing, drying)
- Care and cleaning of eyes, ears and nose
- Personal hygiene and mouth denture care (partially removable prosthesis)
- Bandaging (includes amputation residual limb)
- Wound treatment and care (surgical staple seam, laceration and abrasions)
- Communication skills, especially step-by-step explanation of care measures

### Medical care:

- Prevention of bedsores (decubitus)
- Decubitus evaluation (stages 2-4)
- Decubitus care

- Prevention of muscle cramps
- Prevention of pneumonia
- Prevention of blood clots (thromboses)
- Prevention of healthcare associated infection (HAI) by measures of medical asepsis and clean techniques
- Inhalation therapy
- Oxygen inhalation
- Use of ventilation bag (mouth to mouth and mouth to nose)
- Artificial respiration, oxygen treatment
- Care of tracheostomy
- Care of diabetic foot syndrome (DFS)
- Ostomy care (colostomy)
- Irrigation of eyes and ears
- Intramuscular injections (buttocks)
- Subcutaneous injections (upper arms and thighs)
- Subcutaneous infusions

**The PRO version includes removable organs for these additional patient care training features:**

- Enema administration
- Male and female catheterization CH14
- Gastric (stomach) lavage
- Intestinal irrigation
- Irrigation of the bladder
- Irrigation of the vagina



Cat. No.	Description	Quantity	Unit of Measure
<a href="#">S07108</a>	Patient Care Manikin Pro	1	Each

## Cardionics SAM 4™ Student Auscultation Manikin

**Used for teaching heart, lung, and bowel sounds.**

### Product Features:

- The SAM 4 trainer can be used with any stethoscope
- All sounds and videos are recorded from live patients for students to experience a life-like simulation
- Users can also create and save their own case videos
- A laptop is included and can be connected to the manikin for access to lessons and other helpful content
- When connected to speakers (sold separately) SAM 4 Student Auscultation Manikin can be easily moved into a classroom or an auditorium for group instruction
- The programmable and password-protected lectures allow teaching institutions to have numerous instructors utilize the SAM 4 trainer

### Delivery content:

- Portable SAM 4 Male Auscultation Torso

- New DELL laptop computer pre-installed with auscultation teaching software, programmable and password-protected lectures
- Digital copy of SAM's lesson guide: located on the laptop in digital form, can be printed and used to support auscultation teaching anytime
- One SAM t-shirt
- User's manual

**How is SAM 4 Student Auscultation Manikin different from other auscultation products available on the market?**

- It is lightweight and portable
- It has the largest library of sounds (24 sounds) and videos (36 videos)
- It has the complete lesson guide
- It can be used with any stethoscope
- It has a palpable carotid pulse
- Users can setup password-protected lectures for student assessment
- It is available in light and dark skin version



Cat. No.	Description	Quantity	Unit of Measure
<a href="#">S27940</a>	Student Auscultation Manikin	1	Each

## Cardionics SAM Basic™ Student Auscultation Manikin

Used to teach heart, lung, and bowel sounds.

### Product Features:

- SAM Basic Trainer can be used with the SimScope stethoscope (included)
- All sounds and videos are recorded from adult live patients for students to experience a life-like simulation
- SimScope stethoscope is used to simulate adult heart, lung and bowel sounds, utilizing a large sound library incorporated into the SimScope stethoscope
- Students will hear sounds through the SimScope as they place it over the heart, lungs and bowels
- Uses include: individual learning, group lectures, and for viewing phonocardiograms

### Delivery content:

- A portable SAM Basic Male Auscultation Torso

- One SimScope stethoscope
- The SimScope software and site license
- USB cable
- One SAM t-shirt
- User's manual

### How is SAM Basic Student Auscultation Manikin different?

- Lightweight and portable
- It utilizes the extensive Cardionics proprietary heart, lung, bowel and bruit sounds library
- Students can listen at anatomically correct auscultation sites
- Customized Library is available to fit specific scenarios and programs
- The SimScope Wi-Fi upgrade allows for remote selection of sound scenarios



Cat. No.	Color	Quantity	Unit of Measure
<a href="#">S27945</a>	Dark Skin	1	Each
<a href="#">S27944</a>	Light Skin	1	Each

## Airway Management Trainer with Stand

Ideal for practicing airway management skills.

- Realistic size and anatomy
- Realistic anatomy includes mouth, tongue, oral pharynx, larynx, epiglottis, vocal cords, trachea, and esophagus
- Separate lungs for auscultation
- Inflatable stomach bladder that indicates esophageal insufflation
- Practice suctioning and oral and nasal intubation techniques
- Includes a stand to mount the head

Cat. No.	Product Type	Quantity	Unit of Measure
<a href="#">S07965</a>	Infant Airway Trainer	1	Each
<a href="#">S07966</a>	Child Airway Trainer	1	Each



## CPRLilly PRO+

**A training mannequin that enables instructors and healthcare providers to measure, monitor and analyze the CPR performance of up to 10 trainees at a time.**

CPR CPRLilly Pro+ helps instructors increase effectiveness and efficiency in their CPR courses by connecting with the free CPRLilly App on tablet to follow the CPR performance and deliver objective feedback leading to Quality CPR training (App available on Apple and Google play). It also enables trainees to see and monitor their own performance in real-time with the student view of the App.

LED lights located directly on mannequin's neck provide direct CPR feedback and indicate correct compressions parameters (depth, release and rate).

The easy-to-use App lets the instructor and trainees review CPR performance in real-time. Trainee performance can be tested with the results being saved for further analysis and debriefing.

### Quality CPR Feedback:

- Compression depth, rate, and fraction
- Chest complete release
- Correct hand placement
- Jaw thrust and head tilt control
- Appropriate ventilation volume

### Key Training Features:

- Quality CPR feedback with debriefing history
- Mouth-to-mouth and mouth-to-nose ventilation
- Ventilation with face shield, pocket mask and BVM
- Chest rise with proper ventilation
- Control of proper airway desobstruction
- Carotid pulses
- AED pads placement training capable
- Free App available on google play and iOS
- Constant analysis of CPR parameters for up to 10 mannequins simultaneously

- Individual review possibility in group training for more efficient training
- Adaptable to different course concepts
- Simplified student feedback view available with the CPRLilly App

### Solid mannequin for effective training:

- Made in Germany of extremely durable, latex-free material
- Face masks and lungs bags can be changed easily without tools
- Easy to clean with hygienic airway system
- Runs quietly with efficient power usage and rechargeable battery
- Stable Wi-Fi connection and intuitive App interface
- Practical carrying bag with training mat for comfortable practice
- Dark skin mannequin available

### Includes:

- 1 CPRLilly PRO+ training mannequin
- 1 tablet (S27323 only)
- 1 charger and battery
- 4 lower face masks
- 25 throat bags
- 12 AED-Pad adapters
- 1 carrying bag with training mat



Cat. No.	Description	Quantity	Unit of Measure
<b>S27323</b>	CPRLilly Pro+ with Tablet	1	Each

## Safeguarding Every Step

Explore school safety and **security solutions** for supporting **students and educators** from the curbside to the classroom.

Visit [fisheredu.com/security](https://fisheredu.com/security) to learn more.



## Life/form™ Advanced Venipuncture and Injection Arm

**A revolutionary training arm providing complete venous access for IV therapy and phlebotomy, as well as sites for intramuscular and intradermal injections.**

An extensive 8-line vascular system allows students to practice venipuncture at all primary and secondary locations, including starting IVs and introducing IV catheters.

- One external fluid bag supplying artificial blood to all veins simultaneously
- Dorsal surface includes injectable metacarpal, digital and thumb veins
- Antecubital fossa includes the median cephalic, median basilic and median cubital veins
- Can be performed along with basilic, cephalic, accessory cephalic and median antebrachial veins
- Intramuscular injections may be performed in the deltoid muscle
- Intradermal injection sites are located in the upper arm
- Complete replacement kits are available and easy to use

- Intramuscular injections into the deltoid muscle are enhanced by the soft, lifelike skin and by the natural bony landmarks in the region
- Soft, flexible fingers are molded separately with extreme attention
- Flexion of the wrist helps students develop manipulation skills
- Replaceable skin rolls as the veins are palpated and a discernable “pop” is felt when entering the veins
- Life/form molding process reproduces the fine details of the skin to make the arm look and feel alive
- Valves in the veins can be seen and palpated on the skin surface
- To extend the life of the veins, an aerosol sealant is available to seal punctures and prevent leakage

**WARRANTY:** 3 year



Cat. No.	Color	Quantity	Unit of Measure
<a href="#">S97904</a>	Black skin	1	Each

## Basic Life Support Simulator, BASICBilly+

**Includes a direct CPR Feedback Upgrade Kit which enables students and instructors to effectively train CPR with free, accurate, and user friendly mobile apps powered by heartisense™.**

**Solid and Compact Manikin for Effective Training:**

- Made of easy-to-clean durable, latex free material
- Hygienic, with easy-to-change disposable airways
- Realistic anatomical landmarks to learn correct hand position for chest compression
- Mouth-to-mouth, mouth-to-nose or BVM resuscitation can be practiced
- Offers head-tilt functionality to open the airway or simulate obstructed airway
- Visible chest rise when the lungs are ventilated
- Force required for effective chest compressions has been carefully studied to offer a realistic training approach
- Operation requires (2) AA batteries, not included

**The CPR Apps Provide Feedback For:**

- Compression (depth, recoil, and rate)
- Breath (volume)
- Hands-off time in real-time
- Feedback and evaluation meet the standard of the latest guidelines of the American

Heart Association (AHA) and the European Resuscitation Council (ERC)

**Overview of the CPR App Features:**

- Offers overall scoring and intuitive point of improvement during CPR
- Direct (real-time) and summative CPR feedback for students
- Instructor view can monitor up to 6 manikins at a time
- Saved student results for review
- Export or share students' result/certificate as a PDF file
- Instructor can use CPR analysis for detailed debriefing
- Easily switch from conventional CPR training to Compression Only CPR settings
- Stable connection is provided by a reliable Bluetooth connection
- Mobile devices used to access the apps are not included in the delivery scope



Cat. No.	Color	Quantity	Unit of Measure
<a href="#">S27925</a>	Dark Skin	1	Each
<a href="#">S27924</a>	Light Skin	1	Each

## Epidural and Spinal Injection Trainer

Features realistic haptic feedback and a light, compact structure.

### Functions:

- Epidural anesthesia using the loss-of-resistance and the hanging-drop technique
- Spinal anesthesia with realistic resistance of the dura and arachnoid mater with or without a cannula
- Fluid-filled spinal canal with realistic outflow rate thanks to the ability to adjust the excess pressure
- Epidural catheter can be inserted into the epidural space
- Closed water system
- Easy to clean
- Suitable for both medical training and for specialist medical training

### Includes:

- Base body
- Vertebral bar
- LOR insert (loss-of-resistance)
- Skin
- Spinal canal with connector
- Water collection container
- 10 cm tube
- 2 x 100 mL injections with cap
- Spacer ring for injection
- Extension tube for the hanging-drop technique
- Carry bag



Cat. No.	Description	Quantity	Unit of Measure
<a href="#">S27324</a>	Epidural and Spinal Injection Trainer	1	Each

## Gynecologic Skills Trainer P91

Adult-sized lower torso designed to provide hands-on training of gynecologic skills.

Trainer will be useful for demonstrating the following procedures:

- Bi-manual examinations with palpable, realistic, normal and abnormal uteri
- Vaginal examination with speculum
- Train vaginal examination with easily interchangeable cervixes and have visual recognition of normal and abnormal anatomy variations
- Evaluate multiple conditions using the interchangeable normal and pathologic cervixes
- Pap test for cervical screening
- Practice catheterization (no fluid)
- Suppository administration and digital rectal examination

### Additional Features:

- SKINlike™ high-quality silicone offers a realistic look, feel and texture
- Four different uteri modules with externally palpable abnormal pathologies are easily interchangeable and can be completed with 6 different cervixes
- Adult-sized female lower torso with accurate anatomy, including ischial spines, pubic bones and sacrum
- The torso is in an examination position, and adding the examination wedge can further simulate a gynecologic exam chair position
- Bladder can be simulated full or empty

- Offers realistic flexibility of the vaginal canal wall
- Seamless, flexible skin for practice of speculum placement
- Labia can be separated
- Urethra built for catheterization simulation with CH14 catheter
- Abdominal wall can be removed quickly and without any tools to change the uterus and the cervix
- Latex free

### Includes:

- Gynecologic Skills Trainer P91
- Uteri set (4):
- Normal uterus
- Bicornate uterus
- Uterus with 3 removable myomas structures
- Enlarged uterus
- Cervices Set (6):
- Normal nulliparous or para 0 cervix
- Normal multiparous cervix
- Ectropion cervix (erosion)
- Dysplasia cervix
- Cervix with carcinoma
- Cervix with barrel-shaped carcinoma
- Gynecologic examination wedge
- Lubricant (2 x 250 mL)



Cat. No.	Description	Quantity	Unit of Measure
<a href="#">S27320</a>	Gynecologic Skills Trainer	1	Each

## Episiotomy and Suturing Trainer

**Provides training for managing and closing injuries associated with vaginal births.**

- Median, mediolateral, and lateral episiotomy
- Vaginal tears
- Labial tears

**Muscle structures can be palpated and sutured in the perineal area:**

- M. sphincter ani externus (outer anal sphincter muscle)
- M. transversus perinei superficialis (superficial transverse perineal muscle)
- M. bulbospongiosus (bulbospongiosus muscle)

**Features:**

- Muscle and skin layers can be sutured separately
- Each cut can be sutured several times; by repeating the procedure, the midwifery and obstetrics students learn about professional wound management

- Suture technique can be recorded and assessed by the trainers so that students can improve, after which the students can practice again once the sutures have been removed
- Material used for the simulation of the tissue feels realistic, and it is easy to keep clean
- Complete trainer does not take up much room when stowed away
- Adjustable holder for the simulated tissue stands firmly on the table without slipping
- Insert can be taken out of the holder and then worked on while it is lying on the table
- Latex-free, silicone-based material

**Includes:**

- Silicone insert
- Base and stand



Cat. No.	Description	Quantity	Unit of Measure
<a href="#">S27318</a>	Episiotomy Suturing Trainer	1	Each

## Birthing Stages Trainer

**Allows students in midwifery and obstetrics to practice, correctly assessing the progress of birth.**

Trainer consists of a set of 6 inserts that show the level of cervical dilation and effacing. The inserts can be used both as stand-alone trainers and as an extension module for birth simulator P90. The inserts look the same from the outside, but indicate, using a number code on the back, the condition of the cervix on the inside.

**The following levels and birth stages are shown:**

- Insert no. 1: cervix closed (0.5 cm), level -2
- Insert no. 2: cervix open 2 cm, level -2
- Insert no. 3: cervix open 3 cm, half effaced, level -2
- Insert no. 4: cervix open 5 cm, effaced, level -1

- Insert no. 5: cervix open 7 cm, effaced, level -1
- Insert no. 6: cervix open 9 cm, effaced, level 0

**Includes:**

- 6 birth stage inserts
- Safety plate with 4 screws (for the optional insert in birth simulator P90)
- Lubricant
- Carry bag



Cat. No.	Description	Quantity	Unit of Measure
<a href="#">S27319</a>	Birthing Stages Trainer	1	Each

## P90 Birthing Simulators

**Provides training for normal and complicated deliveries, plus obstetric emergencies.**

### Fetal positioning assessment and manipulation:

- The probability of delivery complications is less likely when abnormal fetal positions are detected before labor begins
- Students will learn fetal position detection methods, manual delivery techniques, and emergency intervention protocols

### Delivery skills and techniques covered:

- Normal vaginal delivery
- Normal delivery of umbilical cord and placenta
- Palpation and assessment of fetal position and presentation
- Diagnosis of all normal and abnormal fetal positions and presentations (like face, neck, or brow)
- Intrauterine manipulation of fetus
- Shoulder dystocia demonstration and management
- Breech deliveries (including complete, footling or incomplete, and frank breech presentation)
- Palpation of fetal fontanelles features
- Complete and incomplete placenta birth
- Demonstration of placenta previa: total, partial, and marginal
- Prolapse of umbilical cord
- Nuchal umbilical cord
- Cesarean delivery with incision
- Artificial rupture of membranes (ARM or AROM, amniotomy)
- Clamping and cutting of umbilical cord
- Simulated suctioning of baby's mouth and nose
- Leopold maneuver
- Pinard's maneuver
- Mauriceau-Smellie-Veit maneuver
- Prague maneuver
- Woods maneuver

- Rubin

### Features:

- Fully articulated fetus with open mouth, tilttable head, shoulder blade, and anatomically-accurate fontanelles
- Life-sized adult female lower torso, anatomically-accurate landmarks like pelvis, pelvic cavity, and spine
- Manual birthing system to control rotation and speed of fetus delivery
- Easy to change position of fetus during birthing process including descent, flexion, extension, internal and external rotation, and restitution
- Uterus with correct positioning of fetus, inflatable to lift fetus for Leopold maneuver
- Easy change-out of parts through pin connections, no tools necessary
- Anti-slip base and handles for extra support on tables
- Belt for fastening to table or bed
- Made of soft vinyl (hard for inner structures) and silicone
- Easy to clean

### Includes:

- Birthing simulator PRO or Basic
- Detachable, padded stomach cover with advanced insert for caesarian section
- Inflatable uterus insert for Leopold maneuver including cover that can be cut for caesarian section
- Birth canal (portio, cervix, vulva)
- Fastening belt
- Lubricant
- Amniotic fluid and 100 inserts
- Assembly kit
- Fully articulated fetal baby
- Umbilical cord
- Placenta



Cat. No.	Description	Quantity	Unit of Measure
<a href="#">S27321</a>	Birthing Simulator PRO	1	Each
<a href="#">S27314</a>	Birthing Simulator - Basic	1	Each



**YOUR STEM PROGRAM**  
MAKE IT AMAZING!

**fisheredu.com/STEM:** Your source for products, professional development, resources and everything STEM.



**BIOTECHNOLOGY**  
ITS FULL OF LIFE

Visit **fisheredu.com/biotechnology** for the latest resources, products and training information.

## Episiotomy Suture Training Module

**Training Module for use with P90 Birthing Simulator.**

Soft skin supports real sutures and will enable the trainee to gain experience in instrument handling as well as suture techniques and tying knots.



Cat. No.	Description	Quantity	Unit of Measure
<a href="#">S27316</a>	Episiotomy suture training module	1	Each

## Postpartum Hemorrhage Trainer P97 Module

**Designed to be easily integrated into the Birthing Simulator P90 PRO and BASIC.**

This versatile obstetric training tool offers a SKINlike™ high-quality silicone vaginal canal and post-partum cervix. The pump attachment allows easy adjustment of the uterine tone to simulate an atonic or contracted uterus.

The PPH trainer module will be useful for training the following procedures:

- Delivery of placenta, also incomplete
- Identification of the post-partum hemorrhage bleeding nature: uterus bleeding, cervix bleeding (rupture), vaginal bleeding (lesion)
- Visual estimation of the blood loss volume up to 1.5 L
- Atonic uterus management
- Practice the fundal massage
- Practice bimanual compression
- Practice catheterization with CH14 catheter

### Includes:

- PPH Trainer P97- Module
- Blood reservoir 1,500 mL
- Blood reservoir stand
- Artificial blood concentrate (2 x 250 mL)
- 2 placentas



Cat. No.	Description	Quantity	Unit of Measure
<a href="#">S27315</a>	Module Postpartum Hemorrhage Trainer	1	Each

## Postpartum Hemorrhage Trainer – PPH Trainer P97

**Versatile and realistic obstetric training tool that offers accurate anatomy, including ischial spines, pubic bones and sacrum. For a realistic feel and texture in addition to a life-like softness, the vaginal canal and post-partum cervix have been made in SKINlike™ high-quality silicone.**

Useful for training the following procedures:

- Delivery of placenta, also incomplete
- Identification of the post-partum hemorrhage bleeding nature: uterus bleeding, cervix bleeding (rupture), vaginal bleeding (lesion)
- Visual estimation of the blood loss volume up to 1.5 L
- Atonic uterus management
- Practice the fundal massage
- Practice bimanual compression
- Practice catheterization with CH14 catheter
- Pump attachment allows easy adjustment of the uterine tone to simulate an atonic or contracted uterus

### Includes:

- PPH Trainer P97
- Blood reservoir 1,500 mL
- Blood reservoir stand
- Artificial blood concentrate (2 x 250 mL)
- 2 placentas

Cat. No.	Description	Quantity	Unit of Measure
<a href="#">S27317</a>	Postpartum Hemorrhage Trainer	1	Each

## Prostate Examination Trainer

**Used in medical simulation and clinical training for the demonstration and practice of digital rectal examinations.**

- Includes 4 different prostates to train professional palpation methods (side position or bent forward) and diagnostic skills associated with rectal examinations
- For reference and self-control, the trainer also includes the corresponding transrectal sonographic imaging (transrectal ultrasound, TRUS) for each stage. While in use, the prostate and the sonographic images are hidden and cannot be seen by the trainee. The compact shape of the DRE Trainer makes it easy to store and the perfect skill trainer for every medical simulation lab.

### The following stages are included:

- Normal prostate
- Advanced prostate carcinoma
- Prostate carcinoma at an early stage
- Benign prostatic hyperplasia (BPH)



Cat. No.	Description	Quantity	Unit of Measure
<a href="#">S27326</a>	Prostate Examination Trainer	1	Each

## Decubitus Trainer

Allows students to learn about professional wound assessment (examination, measurement and description), wound care and bandaging techniques for various stages of decubitus.

Flexible material provides realistic training in changing and applying dressings and bandages, which form a considerable part of nursing and wound care.

**Decubitus stages are shown on the trainer:**

- **Grade 1 (Greater trochanter – Right):** Redness, but the skin is intact
- **Grade 2 (Buttocks – Right):** Partial skin loss is visible. Epidermis shows signs of damage which extends into the dermis (corium). Superficial pressure injury shown can manifest itself through the development of blisters and skin abrasions.
- **Grade 3 (Buttocks – Left):** Recognized by the loss of all layers of the skin with damage to the subcutaneous tissue, through to necrosis. Distinguished by black coloration in the wound area.
- **Grade 4 (Greater Trochanter – Left, Sacrum):** All skin layers and muscle fascia have been destroyed. Necrotic areas have been marked black. Muscles and bone areas below this layer are also affected and damage can become necrotic. Supporting structures such as tendons, ligaments or joint structures can also be affected. Pocket formations, more or less extended, can also be seen.



Cat. No.	Description	Quantity	Unit of Measure
<a href="#">S27330</a>	Decubitus Trainer	1	Each

## Buttock Injection Simulator

High-quality, life-like strap-on intramuscular simulator of a right buttock.

Simulator features anatomical landmarks for intramuscular (I.M.) injections:

- Iliac crest
- Anterior superior iliac spine
- Greater trochanter

**Features:**

- Integrated fine electronics provide graphic feedback when training the intramuscular injection technique, and correctly administered injections will produce audiovisual feedback
- Additional training and control modes are available for checking results either immediately or upon completion of a training session
- Includes a 21 g/0.8 injection needle and 5 mL syringe



Cat. No.	Description	Quantity	Unit of Measure
<a href="#">S27327</a>	Buttock Injection Simulator	1	Each

## Diabetic Foot Treatment Trainer

Features a gangrenous alteration on the big toe of the right foot that has spread from the back of the foot to the metatarsal.

- Mal perforans (trophic ulcer) visible on the sole of the foot (plantar)
- Grade 3 pressure-ulcer depicted in the heel area
- Complete skin layer is lost and the subcutaneous tissue is damaged up to necrosis
- Black coloration in the wound area
- Leg not included



Cat. No.	Description	Quantity	Unit of Measure
<a href="#">S27331</a>	Diabetic Foot Treatment Trainer	1	Each

## XR Clinic Mobile – Virtual Reality Medical Training Solution



**XR Clinic Mobile - Virtual Reality Medical Training Solution is a new way to develop skills using virtual patients.**

- A revolutionary way to develop skills with high resolution graphics.
- Virtual patients answer questions allowing learners to develop their medical diagnostic abilities
- Industry leading graphics
- Minimum space needed for use: 4 sq. ft.
- Lifetime license
- Unique teleportation feature inside VR section
- Fastest setup, load and response time
- 200+ medical scenarios in library
- Case Manager for creating and editing your own cases
- Smart Center with Spectator feature for managing and tracking training
- Multi-user capability – ideal for medical schools or simulation centers
- Multiple languages: English, Spanish, Arabic, Turkish, Portuguese, German, and more to come
- Dimensions: 36 cm L x 22 cm W x 13.5 cm H
- Ship weight: 2.3 kg (5.07 lb.)



Cat. No.	Description	Quantity	Unit of Measure
<a href="#">S00107</a>	VR Patient Clinic	1	Each

## Vet Tech

## Testing

## LabSand—Urine Sample Collection Sand for Laboratory Use

Revolutionary patented hydrophobic sand used to collect non-invasive urine samples from animals in laboratory and research settings.

- Easy collection saves time and makes process stress free
- Obtain a clean uncontaminated sample
- Maintains high standards of animal welfare
- 100% natural, nontoxic, and biodegradable
- Non-invasive
- Reduces animal stress and suffering



Cat. No.	Description	Quantity	Unit of Measure
<a href="#">13-000-100</a>	Urine Collection Sand	18	Case

## CheckUp Dog and Cat Urine Testing Strips for Detection of Kidney Condition

Check for protein levels and monitor your pet's kidney condition with CheckUp urine testing strips.

- 50 CheckUp strips for detection of protein, and indication of kidney failure, in dog or cat urine



Cat. No.	Description	Quantity	Unit of Measure
<a href="#">01-671-403</a>	Kidney Condition Strips	1	Each

## CheckUp Dog and Cat Urine Testing Strips for Detection of UTI

Checks for leukocytes, nitrites and pH levels to confirm the presence of and monitor UTIs.

- 50 count of test strips
- Can be used for dogs or cats



Cat. No.	Description	Quantity	Unit of Measure
<a href="#">01-671-405</a>	UTI Detection Strips	1	Each

## CheckUp Pro Cat – At Home Wellness Test for Cats

Provides a quick, simple and reliable testing method to observe the general wellness of cats through at-home urine testing. The CheckUp pro also make urine sample collection stress-free and easy.

At-home urine testing for general cat wellness made easy with this quick, reliable, and simple testing kit.

- 2 lbs (900 g) hydrophobic litter
- 2 identical testing strips – repeat test with second strip if necessary
- Sample collection pipette
- Sample collection vial



Cat. No.	Description	Quantity	Unit of Measure
<a href="#">01-671-406</a>	Cat Wellness Urine Test	1	Each

## CheckUp P-Pole – Dog Urine Sample Collection Kit

Allows a dog owner to collect a urine sample while taking his or her dog on a regular walk.

- P-pole (which can easily be assembled by screwing the ring into the telescopic pole)
- 3 disposable collection cups with lids, pipettes, and vials



Cat. No.	Description	Quantity	Unit of Measure
<a href="#">01-671-407</a>	Dog Urine Sample Collection Kit	1	Each

## CheckUp Kit4Cat: Litter for Feline Urine Sample Collection

A veterinarian-approved revolutionary hydrophobic litter that keeps cat's urine on top, making sample collection easy and stress free. Because it looks, feels, and smells like regular sand, cats love it.

- Non-invasive, biodegradable and 100% natural
- 3 packs of of 300 g hydrophobic sand
- 3 disposable pipettes and vials



Cat. No.	Description	Quantity	Unit of Measure
<a href="#">01-671-408</a>	Hydrophobic Cat Litter for Feline Urine Sample Collection	1	Each



# Keep Your Nurse's Suite Stocked

Browse this comprehensive list of products to replenish supplies in your school nurse's office. Visit **fisheredu.com** to shop for more science education products.

Description	Cat. No.	Quantity
<b>Personal Protective Equipment</b>		
Fisherbrand™ Powder Free Nitrile Gloves	<a href="#">19-130-1597B</a>	100/Pack
Fisherbrand Powder Free Nitrile Gloves	<a href="#">19-130-1597C</a>	100/Pack
Fisherbrand Powder Free Nitrile Gloves	<a href="#">19-130-1597D</a>	100/Pack
Fisherbrand Powder Free Nitrile Gloves	<a href="#">19-130-1597E</a>	100/Pack
N95 Particulate Respirators 8210	<a href="#">S47062A</a>	20/Pack
Eisco™ Disposable Pleated Face Masks	<a href="#">S27422</a>	50/Pack
Eisco Disposable Pleated Face Masks	<a href="#">S27423</a>	50/Pack
Disposable Masks Zero Waste Box™ System	<a href="#">S88854115</a>	Each
Fisherbrand™ Racer Series Qualifier Eyewear	<a href="#">19-042-1000</a>	12/Pack
<b>First Aid</b>		
Fisherbrand Latex-Free Cohesive Flexible Bandages, Assorted Colors	<a href="#">22-363-103</a>	30/Case
Bandage Scissors, Stainless Steel	<a href="#">S72160</a>	Each
Adhesive Bandages	<a href="#">22-415-608</a>	100/Pack
Stat Strip Adhesive Bandages	<a href="#">22-415-600</a>	100/Pack
50-Person Trauma First Aid Kit	<a href="#">S29676</a>	Each
<b>School Emergency Kits</b>		
Hi-Visibility Teacher and Staff School Emergency Kit	<a href="#">S29690</a>	Each
Hi-Visibility Classroom Evacuation and Lockdown Kit	<a href="#">S29692</a>	Each



# Keep Your Nurse's Suite Stocked

Browse this comprehensive list of products to replenish supplies in your school nurse's office. Visit **fisheredu.com** to shop for more science education products.

Description	Cat. No.	Quantity
<b>Laboratory Furniture</b>		
Diversified Spaces™ Tall Storage Cabinet with Glass Doors	<a href="#">S14213</a>	Each
Diversified Spaces Mobile Storage Cabinet with Maple Top	<a href="#">S42457</a>	Each
Diversified Spaces Hot Water Mobile Station	<a href="#">S47366</a>	Each
Fisherbrand™ Vinyl Stool without Back—Medium Bench Height with Chrome Foot Ring and Casters in Grade A Vinyl	<a href="#">S0100678</a>	Each
<b>Educational Models</b>		
Consequences of An Inactive Lifestyle 3D Display	<a href="#">S00282</a>	Each
The Consequences of Obesity 3D Display	<a href="#">S00279</a>	Each
The NEW Heart of America PLUS with Coronary Bypass Vessels	<a href="#">S00280</a>	Each
<b>Biohazard Waste</b>		
Bel-Art™ Biohazard Disposal Bags with/without Warning Label	<a href="#">S43258</a>	100/Pack
Bel-Art Biohazard Disposal Can	<a href="#">11-394-450</a>	Each
<b>Facility Safety</b>		
Gel No-Rinse Skin Cleansers	<a href="#">04-355-53</a>	Each
Gel No-Rinse Skin Cleansers	<a href="#">04-355-47</a>	Each
Faucet-Mount Eyewashes	<a href="#">S47621</a>	Each

## CheckUp 10-in-1 Dog and Cat Urine Testing Strips

NEW

50 individual CE-grade diagnostic urine testing strips to check for a variety of different parameters and their level of presence in dog or cat urine. These parameters correspond with different medical conditions common in house pets.

- Urobilinogen
- Glucose
- Bilirubin
- Ketone
- Specific Gravity
- Blood
- pH
- Protein
- Nitrite
- Leukocytes



Cat. No.	Description	Quantity	Unit of Measure
<a href="#">01-671-409</a>	Urine Testing Strips	1	Each

### Animal Anatomical Models and Simulators

## Eisco™ Male Rat Dissection Model

Internal dissection of a male rat showing important exterior and interior parts.

- Shows various internal organs and systems
- Numbered with English Key Card
- Mounted on base
- Size (L x W x H): 2 x 17.7 x 1.5 in. (5 x 45 x 4 cm)



Cat. No.	Description	Quantity	Unit of Measure
<a href="#">S15648</a>	Male Rat Dissection Model	1	Each

## Canine Skin Model with Flea Bite Conditions

NEW

Canine Skin Model with Flea Bite Conditions shows an enlarged medical cross-section of canine skin.

- One side features normal skin anatomy extending from the epidermis down to the layer of subcutaneous fat. The reverse side demonstrates the progressing changes of a flea bite from wheal to infected pustule.
- Model size: 5.75 x 4.5 x 3 in.
- Base: 6.5 x 5 in.



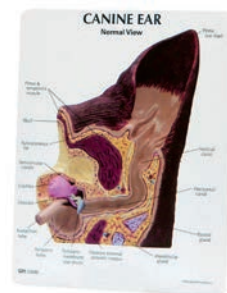
Cat. No.	Description	Quantity	Unit of Measure
<a href="#">S00556***</a>	Canine Skin with Flea	1	Each

## Canine Ear Model

NEW

This two-sided model depicts normal and infected ear structures.

- This two-sided Canine Ear Model, average size
- Normal side with cochlea, auditory ossicles, auditory tube, tympanic bulla, middle ear cavity, tympanic membrane, horizontal canal, vertical canal, auricular cartilage, pinna and temporalis muscle
- Abnormal side illustrates inflamed inner ear structures, inflammatory exudate in tympanic bulla, ear canal with partial occlusion from cellular hyperplasia, inflammatory exudate and an inflamed outer ear.
- Model size: 4.75 x 2.75 x 2 in.



Cat. No.	Description	Quantity	Unit of Measure
<a href="#">S00557***</a>	Canine Ear Model	1	Each

## Canine Parasite Model

NEW

Shows in great detail the 3 most common external parasites a mite, flea, and tick.

- A parasite is an organ that grows, feeds, and is sheltered on or in another type of organism while contributing nothing to the survival of its host. It is fairly common for our pets to become the unknowing hosts to a number of parasites.
- This model shows the three most common external canine parasites, a mite, a flea and a tick, in great detail
- Dimensions: 10.4 x 6.25 in.
- Base: 10.4 x 6.25 in.



Cat. No.	Description	Quantity	Unit of Measure
<a href="#">S00558***</a>	Canine Parasite	1	Each

## Disarticulated Bovine Cow Skeleton

NEW

Ideal for demonstrating typical bone structure and anatomy.

- Complete and non-assembled skeleton bones without pre-drilling.
- Small bones can be loose.
- Does not include building instructions.



Cat. No.	Includes	Weight (English)	Quantity	Unit of Measure
<a href="#">S00559***</a>	Without Horns	90.79 lb.	1	Each
<a href="#">S00560***</a>	With Horns	88.18 lb.	1	Each



## Disarticulated Pig Skeleton

Ideal for demonstrating typical bone structure and anatomy.



- Complete and non-assembled skeleton bones without pre-drilling. Ideal for demonstrating the typical bone structure and anatomy. Small bones can be loose. Does not include building instructions.
- Diet: Omnivore
- Size: Approx. 120 to 180 cm
- Weight: Approx. 50 to 150 kg
- Age: 8 to 12 years
- Skeleton: Approx. 223 individual bones

**Taxonomy:** Domestic Pig (*Sus scrofa domestica*)

- Class: Mammals
- Order: Even-toed ungulates
- Family: Real pigs

Cat. No.	Gender	Quantity	Unit of Measure
<a href="#">S00561***</a>	Female	1	Each
<a href="#">S00562***</a>	Male	1	Each

## Disarticulated Horse Skeleton

Ideal for demonstrating typical bone structure and anatomy.

- Complete and non-assembled skeleton bones without pre-drilling. Small bones can be loose. Does not include building instructions.
- Diet: Herbivore
- Size: Approx. 50 to 200 cm
- Weight: Approx. 100 to 1,200 kg
- Age: Approx. 20 to 50 years
- Skeleton: Approx. 252 individual bones

**Taxonomy:** Horse (*Equus ferus caballus*)

- Class: Mammals
- Order: Odd-toed ungulates
- Family: Horses

Cat. No.	Gender	Quantity	Unit of Measure
<a href="#">S00563***</a>	Female	1	Each
<a href="#">S00564***</a>	Male	1	Each



**NEW**

## Domestic Pig Foot Specimen

Real bone specimen of the foot of a domestic pig.

- All bones from the heel bone to the four toes are fully prepared and connected in an anatomically correct manner
- Diet: Omnivore
- Size: Approx. 120 to 180 cm
- Weight: Approx. 50 to 150 kg
- Age: 8 to 12 years
- Skeleton: Approx. 223 individual bones

**Taxonomy:** Domestic Pig (*Sus scrofa domestica*)

- Class: Mammals
- Order: Even-toed ungulates
- Family: Real pigs

Cat. No.	Description	Quantity	Unit of Measure
<a href="#">S00565***</a>	Pig Foot with Hoof	1	Each



## Horse Foot and Hoof Specimen

Prepared, real, hind horse foot up to the tarsal joint.

- The individual bones are rigidly connected to each other. The hoof capsule is supplied separately with the foot.
  - Diet: Herbivore
  - Size: Approx. 50 to 200 cm
  - Weight: Approx. 100 to 1,200 kg
  - Age: Approx. 20 to 50 years
  - Skeleton: Approx. 252 individual bones
- Taxonomy:** Horse (*Equus ferus caballus*)
- Class: Mammals
  - Order: Odd-toed ungulates
  - Family: Horses

Cat. No.	Description	Quantity	Unit of Measure
<a href="#">S00566***</a>	Horse Hind Foot with Hoof	1	Each



**NEW**



## Horse Carpal Bones Specimen

NEW

Prepared, real, front horse foot up to the carpal joint.

- The individual bones are rigidly connected to each other.  
The hoof capsule is supplied separately with the foot.
- Diet: Herbivore
- Size: Approx. 50 to 200 cm
- Weight: Approx. 100 to 1,200 kg
- Age: Approx. 20 to 50 years
- Skeleton: Approx. 252 individual bones

**Taxonomy:** Horse (*Equus ferus caballus*)

- Class: Mammals
- Order: Odd-toed ungulates
- Family: Horses



Cat. No.	Description	Quantity	Unit of Measure
<a href="#">S00567***</a>	Horse Carpal Bones	1	Each

## Bovine Foot Specimen

NEW

Can be used for comparative anatomy.

Bovine foot (*Bos taurus*) specimen for use in comparative biology



Cat. No.	Description	Quantity	Unit of Measure
<a href="#">S00568***</a>	Cow Foot with Hoof	1	Each

## Dog Leg Specimen

NEW

Prepared, real front or hind leg of a dog.

- **Note:** front or hind leg chosen at random.
- Diet: Carnivore
- Size: Approx. 20 to 85 cm
- Weight: Approx. 1 to 70 kg
- Age: 7 to 18 years
- Skeleton: Approx. 280 individual bones

**Taxonomy:** Domestic Dog (*Canis lupus familiaris*)

- Class: Mammals
- Order: Predators
- Family: Dogs



Cat. No.	Description	Quantity	Unit of Measure
<a href="#">S00569***</a>	Dog Leg	1	Each

## Disarticulated Sheep Skeleton

NEW

Prepared, real skeleton of an adult domestic sheep consisting of approximately 215 individual bones.

- Complete and non-assembled skeleton without pre-drilling. Small bones can be loose.
- It represents a typical example of the order of even-toed ungulates.
- You can choose between a male or a female sheep.
- Does not include building instructions.
- Diet: Herbivore
- Size: Approx. 100 to 190 cm
- Weight: Approx. 50 to 100 kg
- Age: 10 to 18 years
- Skeleton: Approx. 215 individual bones

**Taxonomy:** Domestic Sheep (*Ovis aries*)

- Class: Mammals
- Order: Even-toed ungulates
- Family: Bovids



Cat. No.	Gender	Quantity	Unit of Measure
<a href="#">S00570***</a>	Female	1	Each
<a href="#">S00571***</a>	Male	1	Each

## Horse Spinal Column

NEW

Real horse spine with cervical, thoracic, lumbar, and sacrum.

- Diet: Herbivore
- Size: Approx. 50 to 200 cm
- Weight: Approx. 100 to 1200 kg
- Age: Approx. 20 to 50 years
- Skeleton: Approx. 252 individual bones

**Taxonomy:** Horse (*Equus ferus caballus*)

- Class: Mammals
- Order: Odd-toed ungulates
- Family: Horses



Cat. No.	Mounting	Quantity	Unit of Measure
<a href="#">S00572***</a>	Flexible	1	Each



## Horse Spinal Column and Head

Real horse spine with cervical, thoracic, lumbar, sacrum, and head.

- Diet: Herbivore
- Size: Approx. 50 to 200 cm
- Weight: Approx. 100 to 1200 kg
- Age: Approx. 20 to 50 years
- Skeleton: Approx. 252 individual bones

**Taxonomy:** Horse (*Equus ferus caballus*)

- Class: Mammals
- Order: Odd-toed ungulates
- Family: Horses



**NEW**

Cat. No.	Mounting	Quantity	Unit of Measure
<b>S00573***</b>	Rigid	1	Each

## Horse Sacrum

Real sacrum of a horse to demonstrate typical bone structure and anatomy.

- Diet: Herbivore
- Size: Approx. 50 to 200 cm
- Weight: Approx. 100 to 1200 kg
- Age: Approx. 20 to 50 years
- Skeleton: Approx. 252 individual bones

**Taxonomy:** Horse (*Equus ferus caballus*)

- Class: Mammals
- Order: Odd-toed ungulates
- Family: Horses



**NEW**

Cat. No.	Description	Quantity	Unit of Measure
<b>S00574***</b>	Horse Sacrum	1	Each

## Horse Sternum

Real sternum of a horse to demonstrate the typical bone structure and anatomy.

- Diet: Herbivore
- Size: Approx. 50 to 200 cm
- Weight: Approx. 100 to 1200 kg
- Age: Approx. 20 to 50 years
- Skeleton: Approx. 252 individual bones

**Taxonomy:** Horse (*Equus ferus caballus*)

- Class: Mammals
- Order: Odd-toed ungulates
- Family: Horses



**NEW**

Cat. No.	Description	Quantity	Unit of Measure
<b>S00575***</b>	Horse Sternum	1	Each

## Horse Pelvis

Real pelvis of a horse to demonstrate the typical bone structure and anatomy.

- Diet: Herbivore
- Size: Approx. 50 to 200 cm
- Weight: Approx. 100 to 1200 kg
- Age: Approx. 20 to 50 years
- Skeleton: Approx. 252 individual bones

**Taxonomy:** Horse (*Equus ferus caballus*)

- Class: Mammals
- Order: Odd-toed ungulates
- Family: Horses



**NEW**

Cat. No.	Description	Quantity	Unit of Measure
<b>S00576***</b>	Horse Pelvis	1	Each

## Dog Spinal Column

Real dog spine with cervical, thoracic, lumbar, sacrum, and head. Flexibly mounted.

- Diet: Carnivore
- Size: Approx. 20 to 85 cm
- Weight: Approx. 1 to 70 kg
- Age: 7 to 18 years
- Skeleton: Approx. 280 individual bones

**Taxonomy:** Domestic Dog (*Canis lupus familiaris*)

- Class: Mammals
- Order: Predators
- Family: Dogs



**NEW**

Cat. No.	Mounting	Quantity	Unit of Measure
<b>S00577***</b>	Flexible	1	Each

## Dog Spinal Column and Head

Real dog spine with cervical, thoracic, lumbar, sacrum, and head. Rigidly mounted.

- Diet: Carnivore
- Size: Approx. 20 to 85 cm
- Weight: Approx. 1 to 70 kg
- Age: 7 to 18 years
- Skeleton: Approx. 280 individual bones

**Taxonomy:** Domestic Dog (*Canis lupus familiaris*)

- Class: Mammals
- Order: Predators
- Family: Dogs



**NEW**

Cat. No.	Mounting	Quantity	Unit of Measure
<b>S00578***</b>	Rigid	1	Each



## Dog Sacrum

Real sacrum of a dog to demonstrate the typical bone structure and anatomy.

- Diet: Carnivore
- Size: Approx. 20 to 85 cm
- Weight: Approx. 1 to 70 kg
- Age: 7 to 18 years
- Skeleton: Approx. 280 individual bones

**Taxonomy:** Domestic Dog (*Canis lupus familiaris*)

- Class: Mammals
- Order: Predators
- Family: Dogs



**NEW**

Cat. No.	Description	Quantity	Unit of Measure
<a href="#">S00579***</a>	Dog Sacrum	1	Each

## Dog Sternum

Real sternum of a dog to demonstrate the typical bone structure and anatomy.

- Diet: Carnivore
- Size: Approx. 20 to 85 cm
- Weight: Approx. 1 to 70 kg
- Age: 7 to 18 years
- Skeleton: Approx. 280 individual bones

**Taxonomy:** Domestic Dog (*Canis lupus familiaris*)

- Class: Mammals
- Order: Predators
- Family: Dogs



**NEW**

Cat. No.	Description	Quantity	Unit of Measure
<a href="#">S00580***</a>	Dog Sternum	1	Each

## Dog Pelvis

Real pelvis of a dog to demonstrate the typical bone structure and anatomy.

- Diet: Carnivore
- Size: Approx. 20 to 85 cm
- Weight: Approx. 1 to 70 kg
- Age: 7 to 18 years
- Skeleton: Approx. 280 individual bones

**Taxonomy:** Domestic Dog (*Canis lupus familiaris*)

- Class: Mammals
- Order: Predators
- Family: Dogs



**NEW**

Cat. No.	Description	Quantity	Unit of Measure
<a href="#">S00581***</a>	Dog Pelvis	1	Each

## Mammalian Femur

Real femur of a mammal.

- Demonstrates the typical bone structure and anatomy

**NEW**



Cat. No.	Description	Quantity	Unit of Measure
<a href="#">S00582***</a>	Mammal Femur Bones	1	Each

## Mammalian Humerus

Real humerus of a mammal.

- Demonstrates the typical bone structure and anatomy

**NEW**



Cat. No.	Description	Quantity	Unit of Measure
<a href="#">S00583***</a>	Mammal Humerus Bones	1	Each

## Horse Metacarpal Bones

Ideal for demonstrating the typical bone structure and anatomy.

- Complete and non-assembled forelimb of a horse without pre-drilling.
- Small bones can be loose.
- Does not include building instruction.

**NEW**



Cat. No.	Description	Quantity	Unit of Measure
<a href="#">S00584***</a>	Horse Metacarpal Bones	1	Each

## Horse Metatarsal Bones

Ideal for demonstrating the typical bone structure and anatomy.

- Complete and non-assembled forelimb of a horse without pre-drilling.
- Small bones can be loose.
- Does not include building instruction.

**NEW**



Cat. No.	Description	Quantity	Unit of Measure
<a href="#">S00585***</a>	Horse Metatarsal Bones	1	Each

## Front and Hind Legs of a Horse

**Real bone specimens from an adult horse.**

- Each front leg up to and including the shoulder blade and each hind leg up to the hip joint.
- Rigidly mounted on a base plate
- Diet: Herbivore
- Size: Approx. 50 to 200 cm
- Weight: Approx. 100 to 1,200 kg
- Age: Approx. 20 to 50 years
- Skeleton: Approx. 252 individual bones

**Taxonomy:** Horse (*Equus ferus caballus*)

- Class: Mammals
- Order: Odd-toed ungulates
- Family: Horses



Cat. No.	Mounting	Quantity	Unit of Measure
<a href="#">S00586***</a>	Rigid	1	Each

## Canine Vertebrae Column Model

**Features five lumbar vertebrae and discs, caudal (tail) vertebrae and sacrum.**

- 5 Pieces
- Model size: 8 x 2 x 2 in.
- Base: 8.5 x 5 in.



Cat. No.	Description	Quantity	Unit of Measure
<a href="#">S00587***</a>	Dog Vertebrae Column	1	Each

## Canine Knee

**For anatomy demonstrations.**

Average size knee with femur, fibula, patella and tibia bones; lateral and medial meniscus; anterior and posterior cruciate ligaments; plus six more ligaments and tendons.

- Model size: 2 x 3.5 x 7 in.
- Base: 6.5 x 5 in.



Cat. No.	Description	Quantity	Unit of Measure
<a href="#">S00588***</a>	Canine Knee	1	Each

## Canine Shoulder Model

**For anatomy demonstrations.**

Canine Shoulder model shows an Average size shoulder with scapula, humerus, biceps brachii tendon, coracobrachialis tendon, lateral glenohumeral ligament, medial glenohumeral ligament and transverse humeral ligament.

- Model size: 11.12 x 3 x 2 in.
- Base: 6.5 x 5 in.



Cat. No.	Description	Quantity	Unit of Measure
<a href="#">S00589***</a>	Canine Shoulder	1	Each

## Canine Pelvis (Hip) Model

**For anatomy demonstrations.**

Average size pelvis features both normal and osteoarthritic bone, body of ilium, greater trochanter, head in acetabulum, herniated disc, neck of femur, nerve, sacrum, and third trochanter.

- Model size: 7 x 5.5 x 11 in.
- Base: 6.5 x 5 in.



Cat. No.	Description	Quantity	Unit of Measure
<a href="#">S00590***</a>	Canine Pelvis	1	Each

## Canine Elbow

**For anatomy demonstrations.**

The Canine Elbow model shows a healthy left elbow of average size includes: humerus, radius and ulna bones; plus six ligaments.

- Model size: 9.5 x 1.75 x 7.5 in.
- Base: 8.8 x 6.25 in.



Cat. No.	Description	Quantity	Unit of Measure
<a href="#">S00591***</a>	Canine Elbow	1	Each



## Canine Osteoarthritis Knee Model

**Illustrates degenerative joint disease.**

Set of four life-size models illustrate degenerative joint disease (osteoarthritis). Disease-free (normal) knee also includes additional important structures including ligaments, tendons and patella. The other three models demonstrate articular surface degeneration and the development of osteophytes (bone spurs).

- Model size: 2 x 3.5 x 7 in. (each)
- Base: 10 5/8 x 6.25 in.



Cat. No.	Description	Quantity	Unit of Measure
<b>S00592***</b>	Canine Osteoarthritis Knee	1	Each

## Feline Hip Model

**Demonstrates degenerative osteoarthritis.**

- Average size feline pelvis features: femur, vertebrae L6, L7, caudal (tail), and spinal cord. Osteophytes (bone spurs) indicate degenerative osteoarthritis of the hip joint.
- Model size: 7 x 4.25 x 2.25 in.
- Base: 6.5 x 5 in.



Cat. No.	Description	Quantity	Unit of Measure
<b>S00593***</b>	Feline Hip	1	Each

## Feline Elbow-Shoulder Model

**Features normal bone and osteoarthritic changes to joints.**

Average size feline elbow and shoulder features: normal bone and osteoarthritic changes to joints. Model includes the following bones: scapula, humerus, radius, ulna and nine important ligaments and tendons.

- Model size: 7.75 x 4 x 7/8 in.
- Base: 6.5 x 5 in.



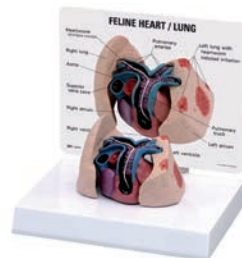
Cat. No.	Description	Quantity	Unit of Measure
<b>S00594***</b>	Feline Elbow Shoulder	1	Each

## Feline Heart and Lung Model

**Demonstrates an infestation of a single heartworm.**

Average feline heart and lungs infested with a single heartworm (*dirofilaria immitis*). Cut-away view demonstrates structures in the heart (right ventricle, pulmonary trunk, pulmonary arteries) and lungs where adult-stage heartworms are normally found. The cut section of the lung indicates patches of heartworm-induced irritation.

- Model size: 3.75 x 2.75 x 2.5 in.
- Base: 6.5 x 5 in.

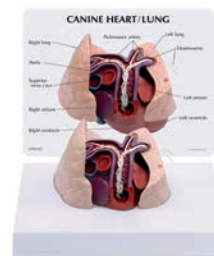


Cat. No.	Description	Quantity	Unit of Measure
<b>S00595***</b>	Feline Heart and Lung	1	Each

## Canine Heart and Lung Model

**Demonstrates an infestation of a single heartworm.**

- Average canine heart and lungs infested with heartworms (*dirofilaria immitis*).
- Cut-away view demonstrates structures in the heart (right ventricle, pulmonary trunk, pulmonary arteries, and lungs) where adult-stage heartworms are normally found.



Cat. No.	Description	Quantity	Unit of Measure
<b>S00596***</b>	Canine Heart and Lung	1	Each

## Dog Skeleton

**Prepared from real bones that have been reassembled and mounted on a wooden base.**

- The bones of the rigidly mounted skeleton are firmly attached to each other for better stability. The flexibly mounted skeleton is particularly suitable for learning and understanding the locomotory system of a dog. The legs of the dog are movably attached to its torso.
- Length: Approx. 55 to 75 cm
- Weight: Approx. 4.5 to 5.5 kg
- Diet: Carnivore
- Size: Approx. 20 to 85 cm
- Weight: Approx. 1 to 70 kg
- Age: 7 to 18 years
- Skeleton: Approx. 280 individual bones



**Taxonomy:** Domestic Dog (*Canis lupus familiaris*)

- Class: Mammals
- Order: Predators
- Family: Dogs

**Dentition formula:**

- Number: 42
- Incisors (I): 3/3
- Canines (C): 1/1
- Premolars (P): 4/4
- Molars (M): 3/3

Cat. No.	Description	Quantity	Unit of Measure
<b>S00597***</b>	Dog Skeleton	1	Each



## Cat Skeleton

**Prepared from real bones that have been reassembled and mounted on a wooden base.**

- The bones of the rigidly mounted skeleton are firmly attached to each other for better stability. The flexibly mounted skeleton is particularly suitable for learning and understanding the locomotory system of a cat.
- Length: Approx. 50 to 70 cm
- Width: Approx. 27 to 35 cm
- Height: Approx. 40 to 60 cm
- Weight: Approx. 3.6 to 4.5 kg
- Diet: Carnivore
- Size: Approx. 50 to 60 cm
- Weight: Approx. 2 to 8 kg
- Age: 10 to 18 years
- Skeleton: Up to Approx. 240 individual bones



**Taxonomy:** Domestic Cat (*Felis catus*)

- Class: Mammals
- Order: Predators
- Family: Cats

**Dentition formula:**

- Number: 30
- Incisors (I): 3/3
- Canines (C): 1/1
- Premolars (P): 3/2
- Molars (M): 1/1

Cat. No.	Description	Quantity	Unit of Measure
<a href="#">S00598***</a>	Cat Skeleton	1	Each

## Rabbit Skull

**Bone specimen of the skull of an adult domestic rabbit.**

- The typical features of a rabbit skull, fine bone lamellae, are clearly visible.
- Domestic Rabbit (*Oryctolagus cuniculus* var. domestica)  
Length: Approx. 10 cm
- Diet: Herbivore (browser)
- Size: Approx. 20 to 45 cm
- Weight: Approx. 1 to 4 kg
- Age: Approx. 10 years
- Skeleton: Approx. 210 individual bones

**Taxonomy:** Class: Mammals

- Order: Lagomorphs
- Family: Leporidae



**Dentition formula:**

- Number: 28
- Incisors (I): 2/1
- Canines (C): 0/0
- Premolars (P): 3/2
- Molars (M): 3/3

Cat. No.	Description	Quantity	Unit of Measure
<a href="#">S00599***</a>	Rabbit Skull	1	Each

## Cat Skull

**Real skull of an adult domestic cat.**

- The shape of the skull may vary depending on the breed.  
Length: Approx. 10 cm
- Diet: Carnivore
- Size: Approx. 50 to 60 cm
- Weight: Approx. 2 to 8 kg
- Age: 10 to 18 years
- Skeleton: Up to Approx. 240 individual bones

**Taxonomy:** Domestic Cat (*Felis catus*)

- Class: Mammals
- Order: Predators
- Family: Cats

**Dentition formula:**

- Number: 30
- Incisors (I): 3/3
- Canines (C): 1/1
- Premolars (P): 3/2
- Molars (M): 1/1



Cat. No.	Description	Quantity	Unit of Measure
<a href="#">S00600***</a>	Cat Skull	1	Each

## Dog Skull

**Real skull of an adult domestic dog.**

- Skull length: Approx. 22.5 cm
- Diet: Carnivore
- Size: Approx. 20 to 85 cm
- Weight: Approx. 1 to 70 kg
- Age: 7 to 18 years
- Skeleton: Approx. 280 individual bones

**Taxonomy:** Domestic Dog (*Canis lupus familiaris*)

- Class: Mammals
- Order: Predators
- Family: Dogs

**Dentition formula:**

- Number: 42

- Incisors (I): 3/3
- Canines (C): 1/1
- Premolars (P): 4/4
- Molars (M): 3/3



Cat. No.	Description	Quantity	Unit of Measure
<a href="#">S00601***</a>	Large Dog Skull	1	Each

## Rabbit Skeleton

**Prepared, real skeleton of an adult domestic rabbit.**

- Consists of about 210 individual bones, which are rigidly connected to each other. It represents a typical example of the order of lagomorphs.
- Mounted on a base plate.
- Dimensions: Approx. 48 x 11 x 27 cm
- Weight: Approx. 3 kg
- Diet: Herbivore (browser)
- Size: Approx. 20 to 45 cm
- Weight: Approx. 1 to 4 kg
- Age: Approx. 10 years
- Skeleton: Approx. 210 individual bones

**Taxonomy:** Domestic Rabbit (*Oryctolagus cuniculus* var. *domesticus*)



- Class: Mammals
- Order: Lagomorphs
- Family: Leporidae

### Dentition formula:

- Number: 28
- Incisors (I): 2/1
- Canines (C): 0/0
- Premolars (P): 3/2
- Molars (M): 3/3

Cat. No.	Description	Quantity	Unit of Measure
<a href="#">S00602***</a>	Rabbit Skeleton	1	Each

## Chicken Skull

**A particularly striking feature is large eye sockets.**

- Diet: Omnivore
- Size: Approx. 30 to 40 cm
- Length: Approx. 6 cm
- Weight: Approx. 2 to 5 kg
- Age: Approx. 4 to 8 years

**Taxonomy:** Chicken (*Gallus gallus domesticus*)

- Class: Birds
- Order: Landfowl
- Family: Phasianidae



Cat. No.	Description	Quantity	Unit of Measure
<a href="#">S00603***</a>	Chicken Skull	1	Each

## Feline Jaw Model

**Depicts healthy teeth on the right side and diseased and damaged teeth on the left.**

- Featured pathologies: fractured canine, periodontal disease, tartar accumulation, plaque, gingivitis, worn incisors, retained deciduous tooth, missing premolar and (canine) gingival recession.
- Jaws open, close and separate for closer study.
- Model size: 2.75 x 2 x 1.1 in.



Cat. No.	Description	Quantity	Unit of Measure
<a href="#">S00604***</a>	Feline Jaw Model	1	Each

## Canine Jaw Model

**Depicts healthy teeth on the right side and diseased and damaged teeth on the left.**

- Featured pathologies: fractured canine, periodontal disease, tartar accumulation, plaque, gingivitis, worn incisors, retained deciduous tooth, missing premolar and (canine) gingival recession.
- Jaws open, close and separate for closer study.
- Model size: 2.75 x 2 x 1.1 in.



Cat. No.	Description	Quantity	Unit of Measure
<a href="#">S00605***</a>	Canine Jaw Model	1	Each

## Clear Canine Jaw Model

**Hinges and shows the roots of all teeth.**

Healthy canine hinged jaw showing the roots of all teeth (incisors, canine, premolars, molars).

- Jaws open, close and separate for closer study.
- Model size: 2.75 x 2 x 1.1 in.



Cat. No.	Description	Quantity	Unit of Measure
<a href="#">S00606***</a>	Clear Canine Jaw Model	1	Each

## Clear Feline Jaw Model

**Hinges and shows the roots of all teeth.**

Healthy feline hinged jaw showing the roots of all teeth (incisors, canine, premolars, molars).

- Jaws open, close and separate for closer study.
- Model size: 2.75 x 2 x 1.1 in.



Cat. No.	Description	Quantity	Unit of Measure
<a href="#">S00607***</a>	Clear Feline Jaw Model	1	Each

## Sanitary CPR Dogs

**Provides each student with their own sanitary muzzle and nosepiece with a one-way valve.**

- The muzzles may be disinfected and reused, while the nosepieces and lower airways are disposable.
- In addition to practice in assisted breathing, students may practice the appropriate rate, pressure, and position of cardiac massage and coordinate the respiratory cardiovascular functions. An IV can even be established for more advanced training.



### Advanced CPR Dog (S00109) features

- Model is connected to a small box that displays a light when the correct ventilation volume is applied, another light indicates correct position for cardiac massage, a third light indicates correct compression depth, and an audible beep and light indicates excessive pressure is being applied. A visible chest rise appears when correct ventilations are applied.

### Both models include:

- Six muzzles
- 10 disposable nosepieces
- Three disposable lower airways
- Soft carry case

### Advanced CPR Dog (S00109) also includes

- Endotracheal tube
- Lubricant
- 12 cc syringe
- Towels
- Butterfly set
- Artificial blood
- Two I.V. bags
- Control box with AC adapter, 9V battery

**WARRANTY:** 5 year

Cat. No.	Description	Quantity	Unit of Measure
<a href="#">S00108</a>	Basic Sanitary CPR Dog	1	Each
<a href="#">S00109</a>	Advanced Sanitary CPR Dog	1	Each



## Equipment and Instruments

## VetPak-G™ Dissection Instruments Pack

**An all-in-one kit for veterinary students.**

- Addison Brown forceps 4.5in.
- Dissection scissor, 5.5 in., bandage
- Kelly forceps 5 in., curved
- Mayo Hegar forceps, 5.5in.
- Dissecting stitching scissors, 4.5in.
- Reflex hammer
- Pen light
- Thermometer
- Instruments holster with waist belt
- Strong carrying case



Cat. No.	Description	Quantity	Unit of Measure
<a href="#">S08087</a>	VetPak-G	1	Each

## Rebreathing Small Animal Anesthesia Machine



**Includes Adult and Ped F-circuit and 2 L bag.**

- High quality limited maintenance design
- Pressure manometer center mounted for immediate visibility
- Toggle switch: rebreathing to nonrebreathing, circuits stay in place
- H-frame with shelf provides support and stability
- 3 in. wheels for maneuverability
- Popoff valve releases at 2 cm H<sub>2</sub>O while maintaining passive volume
- Supports oxygen concentrator
- Small footprint, easy assembly
- Powder coated and anodized frame for easy cleaning



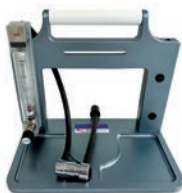
Cat. No.	Description	Quantity	Unit of Measure
<a href="#">04-355-313</a>	Rebreathing Small Animal Anesthesia Machine	1	Each

## Tabletop Nonrebreathing Anesthesia Machine



Made of high-quality materials and has a small footprint. The compact design provides exceptional stability and the mounting options allow for additional accessories.

- High quality limited maintenance design
- Small footprint, easy assembly
- Powder coated and anodized frame for easy cleaning
- Mounting options for additional accessories
- Integrated common outlet



Cat. No.	Description	Quantity	Unit of Measure
<a href="#">04-355-314</a>	Tabletop Nonrebreathing Anesthesia Machine	1	Each

## Tabletop Rebreathing Small Animal Anesthesia Machine



Made of high-quality materials and has a small footprint. The compact design provides exceptional stability and the fresh gas outlet conveniently routes the anesthesia from rebreathing to nonrebreathing.

- High quality limited maintenance design
- Pressure manometer center mounted for immediate visibility
- Toggle switch: rebreathing to nonrebreathing, circuits stay in place
- Popoff valve releases at 2 cm H<sub>2</sub>O while maintaining passive volume
- Small footprint, easy assembly
- Powder coated and anodized frame for easy cleaning



Cat. No.	Description	Quantity	Unit of Measure
<a href="#">04-355-315</a>	Tabletop Rebreathing Anesthesia Machine	1	Each

## Wall Mount Anesthesia System



Made of high-quality materials and has a small footprint. The robust frame provides exceptional stability and the toggle switch conveniently changes from rebreathing to nonrebreathing while circuits stay in place.

- High quality limited maintenance design
- Pressure manometer center mounted for immediate visibility
- Toggle switch: rebreathing to nonrebreathing, circuits stay in place
- Robust frame provides exceptional stability
- Popoff valve releases at 2 cm H<sub>2</sub>O while maintaining passive volume
- Small footprint, easy assembly
- Powder coated and anodized frame for easy cleaning



Cat. No.	Description	Quantity	Unit of Measure
<a href="#">04-355-316</a>	Wall Mount Anesthesia Machine	1	Each



## Healthcare Training and Education Supplies

Explore a complete range of healthcare education products to help prepare the nurses and allied health professionals of tomorrow.

### Nursing

Find a range of tools to develop basic knowledge and learn advanced skills.

- Clinical Classroom Facilities
- Infection and Spill Control
- Patient Care Training

### Allied Health

Train for specialized fields, like audiology and laboratory science.

- Primary and Emergency Care Education
- Diagnostic Education
- Health Science Specialties
- Other Specialty Training

Visit [fisheredu.com/healthcare-education-products](https://fisheredu.com/healthcare-education-products) to learn more.



## Bel-Art

Biohazard Disposal ..... 50

## Diversified Spaces

Hot Water Mobile Station..... 50

Storage Cabinets ..... 50

## Edvotek

Activity Kits

Blood-Based Cancer Diagnostics ..... 10

Blood Typing ..... 9

How Does a Doctor Test for AIDS? ..... 11

Mad Cow Disease Detection ..... 10

What Is an Epidemic and How Does an Infection Spread ..... 11

## Eisco

Anatomy Models

Digestive Canal ..... 5

Female Reproductive Organs ..... 26

Human Clavicle ..... 19

Human Eye..... 18, 21

Human Heart..... 5, 22

Human Lower Jaw..... 20

Human Lungs..... 5

Human Skeleton ..... 17

Human Skull..... 18

Human Testis ..... 25

Human Torso..... 14

Kidney..... 24

Lymph Nodes ..... 25

Muscular Leg ..... 15

Blood Pressure Apparatus ..... 7

Face Masks, Disposable..... 49

Nasal Swab Training Model ..... 21

Stethoscopes..... 7

Suture Practice Kit ..... 37

## Fisherbrand

Bandages, Latex-Free ..... 49

Nitrile Gloves, Powder Free..... 49

## Kemtec

Activity Kits

ABO Blood Typing..... 8

AIDS Simutest..... 10

Blood Typing with Saliva ..... 8

Dental Cavity Potential..... 11

Hemoglobin Scale ..... 8

## United Scientific

Human Brain Model ..... 20

Human Skeleton Model ..... 17

## Vernier Science Education

Spirometer..... 24

A	
Anti-Sera .....	9
Arm .....	14, 32, 36–38
Artery and Vein Models .....	22
Auscultation .....	27, 30, 33–35, 39–40

B	
Bags .....	50
Bandages .....	49
Bandaging .....	27–28, 35–36, 39
Biological Models .....	5
Birth Training Models .....	43–46
Blood-Based Cancer Diagnostics .....	10
Blood Filtration .....	8
Blood Pressure .....	6–7, 29–30
Blood Pressure Apparatus .....	7
Blood Pressure Monitors .....	7
Blood Typing .....	8–9
Blood Typing Trays .....	9
Brain .....	20
Breath Sounds .....	27
Bronchial Tree .....	24–25

C	
Catheterization .....	29, 31, 34–35, 39, 43, 46
Circulatory System .....	22
Clavicle .....	19
CPR .....	29–30, 34–35, 41–42, 60
Cutter, Bones .....	6

D	
Decubitus .....	35–36, 39, 47
Diabetes .....	32
Diabetic Foot Treatment Models .....	47
Diagnostics .....	10
Diaphragm .....	24
Digestive Canal Anatomical Model .....	5
Digestive System .....	23, 25
Digestive System Models .....	25
Duodenum .....	23

E	
Ear .....	21
Edvotek .....	
Blood-Based Cancer Diagnostics .....	10
Electrotherapy .....	38
Emergency Kit .....	49
Episiotomy .....	44, 46
Eye .....	18, 21
Eyewashes .....	50
Eyewear .....	49

F	
Face Masks .....	49
Female Reproductive Organs .....	26
First Aid Kit .....	49
Forensics .....	8
Furniture .....	50
Mobile Units .....	50

G	
Gallbladder .....	23, 25
Gloves .....	49
Gynecologic Skills Training .....	43–46

H	
Hand .....	17, 19, 32
Head .....	18
Heart .....	14, 22, 24, 32, 50
Heart & Breath Sounds Simulator .....	27
Heart & Lungs Models .....	5, 57
Heart Model .....	5
Hemoglobin Scale .....	8
Hip .....	19, 56–57
Human Heart Model .....	22
Human Skeleton Models .....	5
Human Torso Models .....	11–12, 14

I	
Immune System .....	10
Intramuscular Injection .....	31, 37, 39
I.V. Injection Training Aid .....	32, 38

J	
Jaw .....	18, 20, 59
Joints .....	19

K	
Kidneys .....	8, 14, 23–24, 26, 32, 48
Kidney Section Model .....	24
Kits .....	7–10, 32, 37, 49

L	
Larynx .....	24–25, 40
Leg .....	15, 53, 56
Life Support .....	29–30, 41–42
Ligaments .....	19
Liver .....	23, 25
Lungs .....	24
Lungs Models .....	5
Lymph Nodes Models .....	25

M	
Mad Cow Disease .....	10
Medical Trainers .....	27–47
Models .....	
Anatomy Models .....	
Human Hand, Articulated .....	19
Prehistoric Man Skull Set .....	18
Muscle Fiber Models .....	22
Muscular Anatomy Models .....	14, 26
Muscular Arm Models .....	14

N	
Nervous System .....	25
Nervous System Models .....	25

O	
Ovary .....	26
Oximeter .....	7

P	
Pancreas .....	23, 25, 32
Patient Skills Training Models .....	5, 27, 29–47
Pelvis .....	26, 54–56
Practice Suture Kit .....	37
Pregnancy Models .....	26
Prostate .....	46
Pulse Oximeter .....	7

R	
Reproductive Organs Models .....	26

S	
Scissors .....	49
Skeletons .....	15–17, 51–53, 57–59
Spinal Cord Models .....	25
Spine .....	25
Stethoscopes .....	6–7
Stomach .....	23, 25
Stools .....	50, 69
Suture Practice Kit .....	37
Suturing Trainers .....	37, 44

T	
Teeth .....	20, 31
Testis .....	25
Torso .....	11–14, 35–36, 43
Trays .....	9

U	
Ultrasound Training Model .....	31
Urinalysis Lesson Kits .....	7–8

V	
Venipuncture .....	38, 42

This image shows a single sheet of white paper with horizontal ruling lines. The lines are evenly spaced and run across the width of the page. There are no margins, text, or other markings on the paper.

Unless otherwise expressly agreed in writing, all sales are subject to the following terms and conditions:

**GENERAL:** Fisher Scientific Company L.L.C. ("Seller") hereby offers for sale to the buyer named in the order ("Buyer") the products listed on the face hereof (the "Products") on the express condition that Buyer agrees to accept and be bound by the terms and conditions set forth herein. Any provisions contained in any document issued by Buyer are expressly rejected and if the terms and conditions in this Agreement differ from the terms of Buyer's offer, this document shall be construed as a counter offer and shall not be effective as an acceptance of Buyer's document. Buyer's receipt of Products or Seller's commencement of the services provided hereunder will constitute Buyer's acceptance of this Agreement. This is the complete and exclusive statement of the contract between Seller and Buyer with respect to Buyer's purchase of the Products. No waiver, consent, modification, amendment or change of the terms contained herein shall be binding on Seller unless in writing and signed by Seller and Buyer. Notwithstanding the foregoing, Seller reserves the right to make changes to these Terms and Conditions of Sale at any time by posting such changes here, and such changes shall apply to orders of Products made by Buyer thereafter. Seller's failure to object to terms contained in any subsequent communication from Buyer will not be a waiver or modification of the terms set forth herein. All orders are subject to acceptance in writing by an authorized representative of Seller. Seller reserves the right to reject any order for any reason. By purchasing products from Seller, Buyer agrees that it is purchasing the Products only for its own use and not for purposes of resale. Products purchased pursuant to these Terms and Conditions may not be sold or transferred to any person or entity for purposes of resale. Seller reserves the right to take any action it deems necessary to address Buyer's violation of these terms, including, but not limited to, the suspension of Buyer's ability to purchase Products.

**PRICE:** All prices published by Seller or quoted by Seller's representatives may be changed at any time without notice. All prices quoted by Seller or Seller's representatives are valid for thirty (30) days, unless otherwise stated in writing. All prices for the Products will be as specified by Seller or, if no price has been specified or quoted, will be Seller's price in effect at the time of shipment. All prices are subject to adjustment on account of specifications, quantities, raw materials, cost of production, shipment arrangements or other terms or conditions which are not part of Seller's original price quotation. List prices may vary from the price displayed on the website for certain products.

**TAXES AND OTHER CHARGES:** Prices for the Products exclude all sales, value added and other taxes and duties imposed with respect to the sale, delivery, or use of any Products covered hereby, all of which taxes and duties must be paid by Buyer. If Buyer claims any exemption, Buyer must provide a valid, signed certificate or letter of exemption for each respective jurisdiction.

**TERMS OF PAYMENT:** Seller may invoice Buyer upon shipment for the price and all other charges payable by Buyer in accordance with the terms on the face hereof. If no payment terms are stated on the face hereof, payment shall be net thirty (30) days from the date of invoice. If Buyer fails to pay any amounts when due, Buyer shall pay Seller interest thereon at a periodic rate of one and one-half percent (1.5%) per month (or, if lower, the highest rate permitted by law), together with all costs and expenses (including without limitation reasonable attorneys' fees and disbursements and court costs) incurred by Seller in collecting such overdue amounts or otherwise enforcing Seller's rights hereunder. Seller reserves the right to require from Buyer full or partial payment in advance, or other security that is satisfactory to Seller, at any time that Seller believes in good faith that Buyer's financial condition does not justify the terms of payment specified. All payments shall be made in U.S. Dollars.

**DELIVERY; CANCELLATION OR CHANGES BY BUYER:** The Products will be shipped to the destination specified by Buyer, F.O.B. Seller's shipping point. Seller will have the right, at its election, to make partial shipments of the Products and to invoice each shipment separately. Seller reserves the right to stop delivery of Products in transit and to withhold shipments in whole or in part if Buyer fails to make any payment to Seller when due or otherwise fails to perform its obligations hereunder. All shipping dates are approximate only, and Seller will not be liable for any loss or damage resulting from any delay in delivery or failure to deliver which is due to any cause beyond Seller's

reasonable control. In the event of a delay due to any cause beyond Seller's reasonable control, Seller reserves the right to terminate the order or to reschedule the shipment within a reasonable period of time, and Buyer will not be entitled to refuse delivery or otherwise be relieved of any obligations as the result of such delay. Products as to which delivery is delayed due to any cause within Buyer's control may be placed in storage by Seller at Buyer's risk and expense and for Buyer's account. Orders in process may be canceled by Buyer only with Seller's written consent and upon payment of Seller's cancellation charges. Orders in process may not be changed by Buyer except with Seller's written consent and upon agreement by the parties as to an appropriate adjustment in the purchase price therefore. Credit will not be allowed for Products returned without the prior written consent of Seller.

**TITLE AND RISK OF LOSS:** Notwithstanding the trade terms indicated above and subject to Seller's right to stop delivery of Products in transit, title to and risk of loss of the Products will pass to Buyer upon delivery of possession of the Products by Seller to the carrier; provided, however, that title to any software incorporated within or forming a part of the Products shall at all times remain with Seller or the licensor(s) thereof, as the case may be.

**WARRANTY:** Seller warrants that the Products will operate or perform substantially in conformance with Seller's published specifications and be free from defects in material and workmanship, when subjected to normal, proper and intended usage by properly trained personnel, for the period of time set forth in the product documentation, published specifications or package inserts. If a period of time is not specified in Seller's product documentation, published specifications or package inserts, the warranty period shall be one (1) year from the date of shipment to Buyer for equipment and ninety (90) days for all other products (the "Warranty Period"). Seller agrees during the Warranty Period, to repair or replace, at Seller's option, defective Products so as to cause the same to operate in substantial conformance with said published specifications; provided that Buyer shall (a) promptly notify Seller in writing upon the discovery of any defect, which notice shall include the product model and serial number (if applicable) and details of the warranty claim; and (b) after Seller's review, Seller will provide Buyer with service data and/or a Return Material Authorization ("RMA"), which may include biohazard decontamination procedures and other product-specific handling instructions, then, if applicable, Buyer may return the defective Products to Seller with all costs prepaid by Buyer. Replacement parts may be new or refurbished, at the election of Seller. All replaced parts shall become the property of Seller. Shipment to Buyer of repaired or replacement Products shall be made in accordance with the Delivery provisions of the Seller's Terms and Conditions of Sale.

Consumables are expressly excluded from this warranty. If Seller elects to repair defective medical device instruments, Seller may, in its sole discretion, provide a replacement loaner instrument to Buyer as necessary for use while the instruments are being repaired.

Notwithstanding the foregoing, Products supplied by Seller that are obtained by Seller from an original manufacturer or third party supplier are not warranted by Seller, but Seller agrees to assign to Buyer any warranty rights in such Product that Seller may have from the original manufacturer or third party supplier, to the extent such assignment is allowed by such original manufacturer or third party supplier.

In no event shall Seller have any obligation to make repairs, replacements or corrections required, in whole or in part, as the result of (i) normal wear and tear, (ii) accident, disaster or event of force majeure, (iii) misuse, fault or negligence of or by Buyer, (iv) use of the Products in a manner for which they were not designed, (v) causes external to the Products such as, but not limited to, power failure or electrical power surges, (vi) improper storage and handling of the Products or (vii) use of the Products in combination with equipment or software not supplied by Seller. If Seller determines that Products for which Buyer has requested warranty services are not covered by the warranty hereunder, Buyer shall pay or reimburse Seller for all costs of investigating and responding to such request at Seller's then prevailing time and materials rates. If Seller provides repair services or replacement parts that are not covered by this warranty, Buyer shall pay Seller therefor at Seller's then prevailing time and materials rates. ANY INSTALLATION, MAINTENANCE, REPAIR, SERVICE, RELOCATION OR ALTERATION TO OR

# Terms and Conditions of Sale

OF, OR OTHER TAMPERING WITH, THE PRODUCTS PERFORMED BY ANY PERSON OR ENTITY OTHER THAN SELLER WITHOUT SELLER'S PRIOR WRITTEN APPROVAL, OR ANY USE OF REPLACEMENT PARTS NOT SUPPLIED BY SELLER, SHALL IMMEDIATELY VOID AND CANCEL ALL WARRANTIES WITH RESPECT TO THE AFFECTED PRODUCTS.

THE OBLIGATIONS CREATED BY THIS WARRANTY STATEMENT TO REPAIR OR REPLACE A DEFECTIVE PRODUCT SHALL BE THE SOLE REMEDY OF BUYER IN THE EVENT OF A DEFECTIVE PRODUCT. EXCEPT AS EXPRESSLY PROVIDED IN THIS WARRANTY STATEMENT, SELLER DISCLAIMS ALL OTHER WARRANTIES, WHETHER EXPRESS OR IMPLIED, ORAL OR WRITTEN, WITH RESPECT TO THE PRODUCTS, INCLUDING WITHOUT LIMITATION ALL IMPLIED WARRANTIES OF MERCHANTABILITY OR FITNESS FOR ANY PARTICULAR PURPOSE. SELLER DOES NOT WARRANT THAT THE PRODUCTS ARE ERROR-FREE OR WILL ACCOMPLISH ANY PARTICULAR RESULT.

**INDEMNIFICATION BY SELLER:** Seller agrees to indemnify, defend and save Buyer, its officers, directors, and employees from and against any and all damages, liabilities, actions, causes of action, suits, claims, demands, losses, costs and expenses (including without limitation reasonable attorney's fees) ("Indemnified Items") for (i) injury to or death of persons or damage to property to the extent caused by the negligence or willful misconduct of Seller, its employees, agents or representatives or contractors in connection with the performance of services at Buyer's premises under this Agreement and (ii) claims that a Product infringes any valid United States patent, copyright or trade secret; provided, however, Seller shall have no liability under this Section to the extent any such Indemnified Items are caused by either (i) the negligence or willful misconduct of Buyer, its employees, agents or representatives or contractors, (ii) by any third party, (iii) use of a Product in combination with equipment or software not supplied by Seller where the Product would not itself be infringing, (iv) compliance with Buyer's designs, specifications or instructions, (v) use of the Product in an application or environment for which it was not designed or (vi) modifications of the Product by anyone other than Seller without Seller's prior written approval. Buyer shall provide Seller prompt written notice of any third party claim covered by Seller's indemnification obligations hereunder. Seller shall have the right to assume exclusive control of the defense of such claim or, at the option of the Seller, to settle the same. Buyer agrees to cooperate reasonably with the Seller in connection with the performance by Seller of its obligations in this Section.

Notwithstanding the above, Seller's infringement related indemnification obligations shall be extinguished and relieved if Seller, at its discretion and at its own expense (a) procures for Buyer the right, at no additional expense to Buyer, to continue using the Product; (b) replaces or modifies the Product so that it becomes non-infringing, provided the modification or replacement does not adversely affect the specifications of the Product; or (c) in the event (a) and (b) are not practical, refund to Buyer the amortized amounts paid by Buyer with respect thereto, based on a five (5) year amortization schedule. The foregoing indemnification provision states Seller's entire liability to Buyer for the claims described herein.

**INDEMNIFICATION BY BUYER:** Seller agrees to indemnify, defend and save Buyer, its officer, directors, and employees from and against any and all damages, liabilities, actions, causes of action, suits, claims, demands, losses, costs and expenses (including without limitation reasonable attorney's fees) ("Indemnified Items") for (i) injury to or death of persons or damage to property to the extent caused by the negligence or willful misconduct of Seller, its employees, agents or representatives or contractors in connection with the performance of services at Buyer's premises under this Agreement and (ii) claims that a Product infringes any valid United States patent, copyright or trade secret; provided, however, Seller shall have no liability under this Section to the extent any such Indemnified Items are caused by either (i) the negligence or willful misconduct of Buyer, its employees, agents or representatives or contractors, (ii) by any third party, (iii) use of a Product in combination with equipment or software not supplied by Seller where the Product would not itself be infringing, (iv) compliance with Buyer's designs, specifications or instructions, (v) use of the Product in an application or environment for which it was not designed or (vi) modifications of the Product by anyone other than Seller without Seller's prior written approval. Buyer shall provide Seller prompt written notice of any third party claim covered by Seller's indemnification obligations hereunder. Seller shall have the right to assume exclusive control of the defense of such claim or, at the

option of the Seller, to settle the same. Buyer agrees to cooperate reasonably with Seller in connection with the performance by Seller of its obligations in this Section.

Notwithstanding the above, Seller's infringement related indemnification obligations shall be extinguished and relieved if Seller, at its discretion and at its own expense (a) procures for Buyer the right, at no additional expense to Buyer, to continue using the Product; (b) replaces or modifies the Product so that it becomes non-infringing, provided the modification or replacement does not adversely affect the specifications of the Product; or (c) in the event (a) and (b) are not practical, refund to Buyer the amortized amounts paid by Buyer with respect thereto, based on a five (5) year amortization schedule. THE FOREGOING INDEMNIFICATION PROVISION STATES SELLER'S ENTIRE LIABILITY TO BUYER FOR THE CLAIMS DESCRIBED HEREIN.

Buyer shall indemnify, defend with competent and experienced counsel and hold harmless Seller, its parent, subsidiaries, affiliates and divisions, and their respective officers, directors, shareholders and employees, from and against any and all damages, liabilities, actions, causes of action, suits, claims, demands, losses, costs and expenses (including without limitation reasonable attorneys' fees and disbursements and court costs) to the extent arising from or in connection with (i) the negligence or willful misconduct of Buyer, its agents, employees, representatives or contractors; (ii) use of a Product in combination with equipment or software not supplied by Seller where the Product itself would not be infringing; (iii) Seller's compliance with designs, specifications or instructions supplied to Seller by Buyer; (iv) use of a Product in an application or environment for which it was not designed; or (v) modifications of a Product by anyone other than Seller without Seller's prior written approval.

**SOFTWARE:** With respect to any software products incorporated in or forming a part of the Products hereunder, Seller and Buyer intend and agree that such software products are being licensed and not sold, and that the words "purchase", "sell" or similar or derivative words are understood and agreed to mean "license", and that the word "Buyer" or similar or derivative words are understood and agreed to mean "licensee". Notwithstanding anything to the contrary contained herein, Seller or its licensor, as the case may be, retains all rights and interest in software products provided hereunder.

Seller hereby grants to Buyer a royalty-free, non-exclusive, nontransferable license, without power to sublicense, to use software provided hereunder solely for Buyer's own internal business purposes on the hardware products provided hereunder and to use the related documentation solely for Buyer's own internal business purposes. This license terminates when Buyer's lawful possession of the hardware products provided hereunder ceases, unless earlier terminated as provided herein. Buyer agrees to hold in confidence and not to sell, transfer, license, loan or otherwise make available in any form to third parties the software products and related documentation provided hereunder. Buyer may not disassemble, decompile or reverse engineer, copy, modify, enhance or otherwise change or supplement the software products provided hereunder without Seller's prior written consent. Seller will be entitled to terminate this license if Buyer fails to comply with any term or condition herein. Buyer agrees, upon termination of this license, immediately to return to Seller all software products and related documentation provided hereunder and all copies and portions thereof.

Certain of the software products provided by Seller may be owned by one or more third parties and licensed to Seller. Accordingly, Seller and Buyer agree that such third parties retain ownership of and title to such software products. The warranty and indemnification provisions set forth herein shall not apply to software products owned by third parties and provided hereunder.

**LIMITATION OF LIABILITY:** NOTWITHSTANDING ANYTHING TO THE CONTRARY CONTAINED HEREIN, THE LIABILITY OF SELLER UNDER THESE TERMS AND CONDITIONS (WHETHER BY REASON OF BREACH OF CONTRACT, TORT, INDEMNIFICATION, OR OTHERWISE, BUT EXCLUDING LIABILITY OF SELLER FOR BREACH OF WARRANTY (THE SOLE REMEDY FOR WHICH SHALL BE AS PROVIDED UNDER SECTION 7 ABOVE)) SHALL NOT EXCEED AN AMOUNT EQUAL TO THE LESSER OF (A) THE TOTAL PURCHASE PRICE THERETOFORE PAID BY BUYER TO SELLER WITH RESPECT TO THE PRODUCT(S) GIVING RISE TO SUCH LIABILITY OR (B) ONE MILLION DOLLARS (\$1,000,000). NOTWITHSTANDING ANYTHING TO THE CONTRARY CONTAINED HEREIN, IN NO

EVENT SHALL SELLER BE LIABLE FOR ANY INDIRECT, SPECIAL, CONSEQUENTIAL OR INCIDENTAL DAMAGES (INCLUDING WITHOUT LIMITATION DAMAGES FOR LOSS OF USE OF FACILITIES OR EQUIPMENT, LOSS OF REVENUE, LOSS OF DATA, LOSS OF PROFITS OR LOSS OF GOODWILL), REGARDLESS OF WHETHER SELLER (a) HAS BEEN INFORMED OF THE POSSIBILITY OF SUCH DAMAGES OR (b) IS NEGLIGENT.

**EXPORT RESTRICTIONS:** Buyer acknowledges that each Product and any related software and technology, including technical information supplied by Seller or contained in documents (collectively "Items"), is subject to export controls of the U.S. government. The export controls may include, but are not limited to, those of the Export Administration Regulations of the U.S. Department of Commerce (the "EAR"), which may restrict or require licenses for the export of Items from the United States and their re-export from other countries. Buyer shall comply with the EAR and all other applicable laws, regulations, laws, treaties, and agreements relating to the export, re-export, and import of any Item. Buyer shall not, without first obtaining the required license to do so from the appropriate U.S. government agency; (i) export or re-export any Item, or (ii) export, re-export, distribute or supply any Item to any restricted or embargoed country or to a person or entity whose privilege to participate in exports has been denied or restricted by the U.S. government. Buyer shall cooperate fully with Seller in any official or unofficial audit or inspection related to applicable export or import control laws or regulations, and shall indemnify and hold Seller harmless from, or in connection with, any violation of this Section by Buyer or its employees, consultants, agents, or customers.

**PROMOTION CODE TERMS AND CONDITIONS:** Discounts are valid on the purchase of list-price items only through fishersci.com orders. One-time use only. All promotions and discounts are on Fisher Scientific cart items only. Valid in the U.S. only. To redeem, enter the promo code in the box marked promo code at checkout. Free shipping offers apply to standard shipping only. Not valid with any other promotion. Terms are subject to change. Offer void where prohibited, licensed or restricted by federal, state, provincial or local laws or regulation or agency/institutional policy. Other restrictions may apply.

**ACCEPTABLE PAYMENT METHODS:** The Seller prefers to receive payment via ACH or other electronic interface methods that directly exchange funds between the Buyer's and Seller's bank accounts. The Seller also accepts checks mailed to one of its lockbox remittance locations. Although the Seller does accept credit card payments at the time of purchase, it does not accept credit card payments after the point of sale.

**PROMOTIONAL TERMS FOR HEALTHCARE PROVIDERS AND FEDERAL, STATE AND LOCAL GOVERNMENT CUSTOMERS:** Many promotions are not available to our current or potential healthcare customers or to federal, state and local government customers.

Healthcare customers include any healthcare practitioner, other healthcare provider or any individual or organization authorized to prescribe, dispense, purchase or influence the acquisition or use of medical devices or supplies for clinical use. Healthcare customers include, without limitation, any "Health Care Practitioner" under the Massachusetts Marketing Code of Conduct Law (defined at 105 C.M.R. §907.004) or a "Health Care Provider" under the Vermont Prescribed Products Gift Ban and Disclosure Law (defined at Vt. Stat. Ann. tit. 18, §4631a(8)). By participating in any promotion that is subject to the above limitations, Buyer warrants that it is not a current or potential healthcare customer or a federal, state and local government customer. Seller reserves the right to determine Buyer's status in the event of a dispute.

In the event that the promotion is available to Healthcare providers, Buyer acknowledges that the offer may include a discount or other price reduction that must be properly and accurately accounted for and reported by Buyer in accordance with all federal and state laws, including without limitation the federal anti-kickback law (42 C.F.R. § 1320a-7b(b) (3)(A)) and regulations thereunder (42 C.F.R. §1001.952(h)).

**MISCELLANEOUS:** (a) Buyer may not delegate any duties nor assign any rights or claims hereunder without Seller's prior written consent, and any such attempted delegation or assignment shall be void. (b) The rights and obligations of the parties hereunder shall be governed by and construed in accordance with the laws of the Commonwealth of Pennsylvania, without reference to its choice of law provisions. Each party hereby irrevocably consents to the exclusive jurisdiction of the state and federal courts located

in Allegheny County, Pennsylvania, USA, in any action arising out of or relating to this Agreement and waives any other venue to which it may be entitled by domicile or otherwise. (c) In the event of any legal proceeding between the Seller and Buyer relating to this Agreement, neither party may claim the right to a trial by jury, and both parties waive any right they may have under applicable law or otherwise to a right to a trial by jury. Any action arising under this Agreement must be brought within one (1) year from the date that the cause of action arose. (d) The application to this Agreement of the U.N. Convention on Contracts for the International Sale of Goods is hereby expressly excluded. (e) In the event that any one or more provisions contained herein shall be held by a court of competent jurisdiction to be invalid, illegal or unenforceable in any respect, the validity, legality and enforceability of the remaining provisions contained herein shall remain in full force and effect, unless the revision materially changes the bargain. (f) Seller's failure to enforce, or Seller's waiver of a breach of, any provision contained herein shall not constitute a waiver of any other breach or of such provision. (g) Unless otherwise expressly stated on the Product or in the documentation accompanying the Product, the Product is intended for research only and is not to be used for any other purpose, including without limitation, unauthorized commercial uses, in vitro diagnostic uses, ex vivo or in vivo therapeutic uses, or any type of consumption by or application to humans or animals. (h) Seller shall cooperate with Buyer to monitor invoicing accuracy and will conduct appropriate internal reviews upon request. Reviews shall be limited to once per year and shall cover the prior twelve month period. Reasonable credit shall be given to undercharges and overcharges. If Buyer engages external consultants to review invoice accuracy, Seller reserves the right to charge a reasonable fee for support provided to such party. (i) Buyer agrees that all pricing, discounts and technical information that Seller provides to Buyer are the confidential and proprietary information of Seller. Buyer agrees to (1) keep such information confidential and not disclose such information to any third party, and (2) use such information solely for Buyer's internal purposes and in connection with the Products supplied hereunder. Nothing herein shall restrict the use of information available to the general public. (j) Any notice or communication required or permitted hereunder shall be in writing and shall be deemed received when personally delivered or three (3) business days after being sent by certified mail, postage prepaid, to a party at the address specified herein or at such other address as either party may from time to time designate to the other. (k) Seller may, in its sole discretion, provide (1) applicable Product training to Buyer or its employees, or (2) samples of Products to Buyer for distribution to patients of Buyer. Buyer agrees that any such samples shall be distributed to patients for patient use or, if not so distributed, returned to Seller. Buyer shall not use such samples to provide care to patient and shall not bill patients or third party payers for the provision of such samples.

**ACCEPTABLE PAYMENT METHODS:** The Seller prefers to receive payment via ACH or other electronic interface methods that directly exchange funds between the Buyer's and Seller's bank accounts. The Seller also accepts checks mailed to one of its lockbox remittance locations. Although the Seller does accept credit card payments at the time of purchase, it does not accept credit card payments after the point of sale.

**MEDICARE/MEDICAID REPORTING REQUIREMENTS:** If Buyer is a recipient of Medicare/Medicaid funds, Buyer acknowledges that it has been informed of and agrees to fully and accurately account for, and report on its applicable cost report, the total value of any discount, rebate or other compensation paid hereunder in a way that complies with all applicable federal, state and local laws and regulations which establish "Safe Harbor" for discounts. Buyer shall make written request to Seller in the event Buyer requires additional information from Seller in order to meet its reporting requirements. Buyer acknowledges that agreement to such reporting requirement was a condition precedent to Seller's agreement to provide Products and that Seller would not have entered into this Agreement had Buyer not agreed to comply with such obligations.

**PRODUCT DESCRIPTIONS:** Product Descriptions are provided by the manufacturer of the product and are current as of the date of printing of this catalog. More current descriptions provided by the manufacturers are reflected at [fisheredu.com](http://fisheredu.com).

## LOOK TO FISHER SCIENCE EDUCATION FOR HASSLE-FREE SERVICE • PROMPT DELIVERY • GREAT PRICES • QUALITY PRODUCTS AND SELECTION

### FISHER SCIENCE EDUCATION GUARANTEE

At Fisher Science Education, we are committed to providing you with the highest quality products and services possible. If, for any reason, you are not 100% satisfied with your purchase, simply contact our friendly customer service team within 30 days of the invoice date. We will exchange the product, repair or replace the product or issue you a credit for the full purchase price. Simply call us, toll-free, for a Return Authorization Number. Special order items, furniture, and closeouts cannot be exchanged or credited.

### HOW TO ORDER

Fisher Science Education offers you many ways to order. So we can serve you quickly, it helps to have your account number available when placing your order. We gladly accept purchase orders issued on School or District letterhead. Registered users may also place orders online at **fisheredu.com**. For your convenience, we also accept VISA™, MasterCard™, and American Express™ credit cards. For credit card purchases, be ready to provide the card number, the type of card, exact name on the card, expiration date, full address and telephone number.

**Mail:** Fisher Science Education  
4500 Turnberry Drive  
Hanover Park, IL 60133

**Phone:** 1-800-955-1177 • 7 a.m. to 5:30 p.m.,  
Central Time – Monday through Friday

**Fax:** 1-800-955-0740 • 24 hours a day, 7 days a week

**Email:** [fse.custserv@thermofisher.com](mailto:fse.custserv@thermofisher.com)

**Internet:** [fisheredu.com](http://fisheredu.com)

**Special note on international purchases:** Please contact Global Export Customer Service if your order requires export and if the ultimate destination is outside of the United States.

### Fisher Scientific Latin America and Global Export Customer Service Center:

3970 John's Creek Court, Suite 500, Suwanee, GA 30024 USA

Telephone (inside the U.S.): 1-800-955-5090  
Telephone (outside the U.S.): 770-871-4725  
Fax (outside the U.S.): 770-871-4726

### PRICES AND PAYMENT

All pricing subject to change.

If you don't have an account and would like one, we'll be happy to set up a user account for you — simply call Customer Service at 1-800-955-1177.

To complete your credit card, check, or money order payments, please include applicable sales tax and 10% of the total price of all products (minimum of \$15) purchased to cover shipping, handling and insurance

Please provide payment (net) within 30 days from the date of the invoice.

If you have any questions about product selection, pricing, or invoicing, please call us at 1-800-955-1177.

### SPECIAL PURCHASES

Fisher Science Education will sell BALANCES, CHEMICALS and BACTERIAL CULTURES to educational institutions ONLY. Please submit orders for these products on school letterhead or order them through your registered user account at **fisheredu.com**.

We will honor your requests for tax-exempt purchases if your account is coded tax-exempt (a signed tax-exempt certificate is on file with Fisher Science Education) or, if purchasing with a credit card, the card is an official tax-exempt card.

Some of the products we sell are time sensitive and must be delivered within a specified period of time. Others may be considered hazardous materials. For time-sensitive materials, please specify the desired delivery date when you want the products to arrive so that you will be available to receive them. There is a charge for time-sensitive and hazardous materials. (See: Shipping Your Order.)

### SHIPPING YOUR ORDER

We want your purchase to arrive promptly and undamaged. To ensure this, we only deliver products to a street address, not to a Post Office Box — please remember this when placing your order. Other things to consider for product shipping include:

**How should we ship your purchase?** We will ship according to your special instructions, whenever possible. Otherwise, we will select the best shipment method, based on the nature of the material, destination, package size and weight.

**Do you need extra-quick delivery?** Overnight shipping is available for many products at an additional cost, but certain hazardous materials may be exempt from this service — please ask your Customer Service Representative when placing your order.

**Is motor freight necessary?** Some items must be shipped by motor freight (rather than by small parcel carriers) and will have different shipping costs. These items are noted in our catalog with a "Motor Freight" icon. Call your Customer Service Representative for assistance in calculating these expenses.

**Is the material hazardous?** There is a single charge of \$27.50 per order for hazardous materials, no matter how many hazardous items are on your order.

**Is your purchase live or time-sensitive?** Be sure to specify the desired delivery date for all live material orders. Some live products have minimum purchase requirements, require special handling fees or have shipping restrictions. Contact Customer Service for specific details.

### ONCE YOU RECEIVE YOUR ORDER

**Inspect your shipment!** Open and inspect your order immediately upon arrival and notify us of any problems. Report claims for damage within the seven (7) day period after delivery to allow us to remedy problems with shipping companies.

**Want to return a product?** The dedicated staff at Fisher Science Education Customer Service is committed to resolving any questions or problems you may encounter. Here are the steps to take:

- Please notify us no later than seven (7) days after delivery of any damaged or unsatisfactory shipments
- Obtain a return authorization number from Fisher Science Education Customer Service prior to returning any product.
- Provide the Fisher Science Education Confirmation Number, found in the upper left hand corner of the packing slip or invoice, or your account number and the purchase order number.

**NOTE:** Products are subject to a fifteen percent (15%) restocking charge, unless they were not supplied in accordance with your order or are defective at the time of delivery.

**Products in this catalog are intended for use by children age 13 or over.**

### LIMITED WARRANTY

Fisher Scientific Company L.L.C. ("Fisher") will make available the manufacturer's warranties, without recourse to Fisher.

However, except as otherwise set forth here, Fisher expressly disclaims all other warranties, whether expressed, implied or statutory, including the warranties of merchantability and fitness for a particular purpose.

In no event shall Fisher be liable for any special, indirect, incidental, consequential or exemplary damages, however arising, even if Fisher Scientific has been advised of the possibility of such damages, out of the sale or use of the products described in this catalog.

Your sole and exclusive remedy for any cause of action arising out of the sale or use of any product described in this catalog shall be repair or replacement of the product or refund of the purchase price at Fisher's option.

©2024 Thermo Fisher Scientific Inc. All rights reserved.  
For trademark ownership see Trademark Reference.  
Printed and bound in the U.S.A. 24-124-2043  
BN249144462-US



**We make the products. You make the magic.**

It's our privilege to manufacture **hands-on teaching products** for use in Biology, Chemistry, Earth Science and Physics classrooms. Look for **United Scientific products** throughout the Fisher Science Education catalog.



**fisherbrand**

## Seating Options to Suit Your Classroom

### Fisherbrand™ Chairs and Stools

Choose from vinyl covered foam, polyurethane, plastic, or wooden solutions—all proudly made in the U.S.

Description	Material	Cat. No.
Fisherbrand Medium Bench Height Stool with Back, Marine Blue	Vinyl	<a href="#">S36592</a>
Fisherbrand Desk Height Chair with Casters, Black	Polyurethane	<a href="#">S36743</a>
Fisherbrand Desk Height Stool with Round Tube Base	Wood	<a href="#">S36813</a>
Fisherbrand Desk Height Shell Chair with Round Tube Base and Stationary Glides, Blue	Polypropylene	<a href="#">S90502</a>



S36592



S36743



S36813



S90502

Visit [fisherchair.com](http://fisherchair.com) to build a chair or learn more.



# Allied Health

## 2025–2026 Product Catalog

Distributed by Fisher Science Education. Contact us today:

**In the United States**

Order online: [fisheredu.com](https://fisheredu.com)

Call customer service: 1-800-955-1177

**Fisher Science Education**

4500 Turnberry Drive

Hanover Park, IL 60133



© 2025 Thermo Fisher Scientific Inc. All rights reserved.

Trademarks used are owned as indicated at [fishersci.com/trademarks](https://fishersci.com/trademarks).