



# 2022 Respiratory Illness Guide

Diagnostics, Testing Supplies, Specimen Collection Kits, Cold Storage Units, and PPE

Insight. Impact. Outcomes.

 **fisher**  
healthcare  
part of Thermo Fisher Scientific



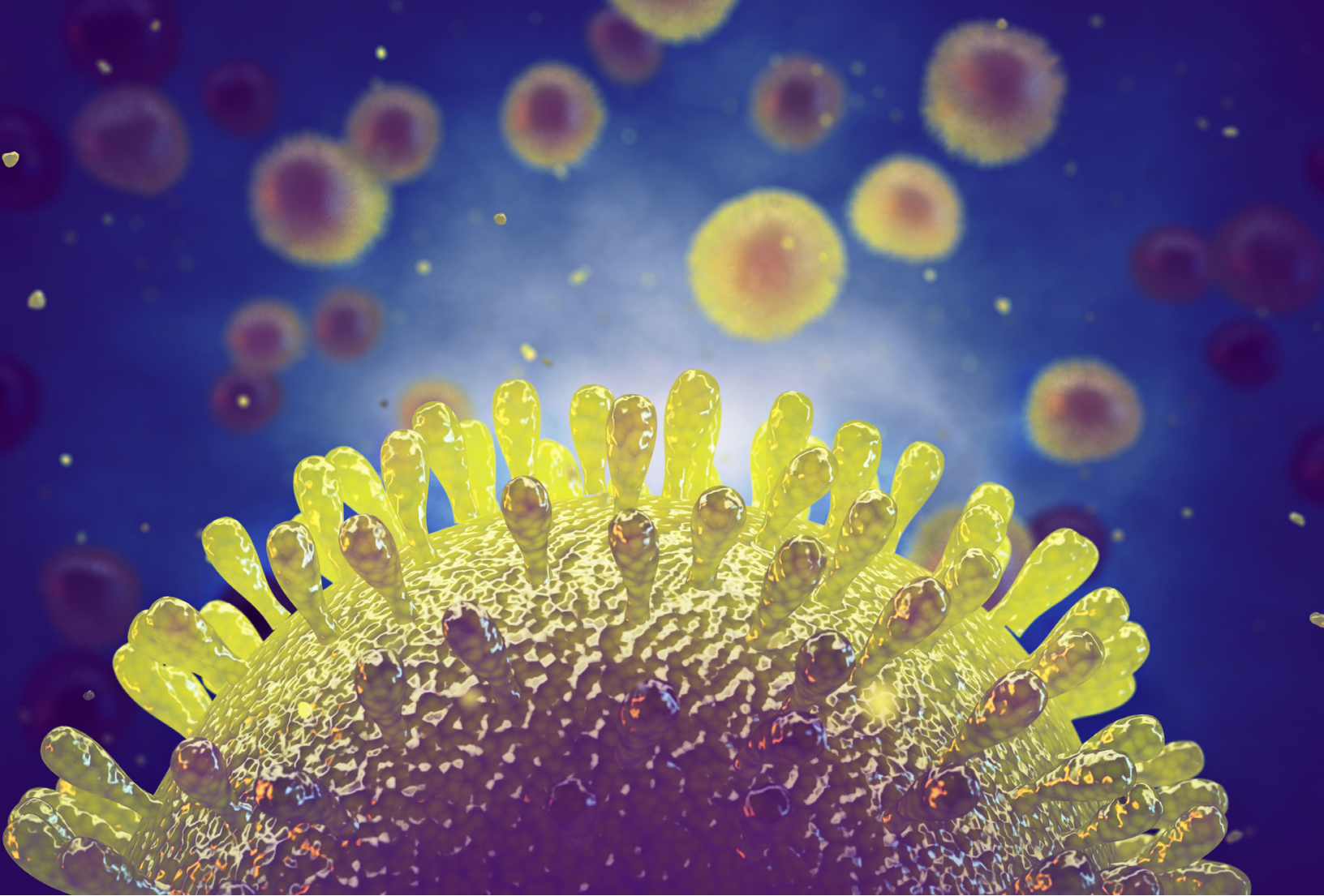
# Prepare for Seasonal Respiratory Illnesses

The ongoing global pandemic will continue to pose challenges for the 2022 respiratory illness season. Stock up on the essential assays, instruments, and supplies you'll need to detect COVID-19, influenza A and B, and other respiratory illnesses, plus find personal protective equipment (PPE) to help you maintain a safer workplace.

## Table of Contents

- Analyzers and Readers.....3
- Influenza, RSV, and Strep Diagnostics
  - Influenza Assays and Controls.....11
  - RSV Assays and Controls .....18
  - Strep Assays and Controls.....24
- COVID-19 Testing .....32
  - Over-the-Counter (OTC) COVID-19 Tests.....42
- Combo Kit Testing.....45
- Controls for Research Use Only (RUO).....49
- Specimen Collection Products.....52
- Cold Storage Equipment.....57
- Workplace Safety Products.....60





# Analyzers and Readers

Find the high-performance equipment you need to detect a variety of infections rapidly and accurately.

## Abbott ID NOW System (formerly Alere i)

The Abbott ID NOW™ System uses isothermal nucleic acid amplification technology to detect influenza A and B viral nucleic acids. The CLIA-waived methods include all the necessary testing components, and the analyzer offers barcode technology and LIS connectivity. Assays available for this platform include influenza A and B, RSV, strep A, and COVID-19.



Description	Mfr. No.	Cat. No.
ID NOW Instrument	NAT024	23-046-617
Abbott ID NOW Influenza A and B 2	427000	23-046-634
Abbott ID NOW Strep A 2 Test Kit	734000	23-046-632
Abbott ID NOW RSV Test Kit	435000	23-043-632
Abbott ID NOW COVID-19 2.0	192-000	23-046-655

## Meridian Bioscience Revogene Instrument

Capable of single analyte or multiplex testing, the Meridian Bioscience™ Revogene™ molecular platform can help you standardize testing. Its fully automated molecular platform offers minimal hands-on time in a flexible, scalable platform that can be expanded to meet your changing needs. Performs homogenization, microorganism lysis, dilution, amplification, and detection of target nucleic acid sequences from multiple specimens using fluorescence-based real-time PCR. Assays are available for SARS-CoV-2, Strep A, and several other non-respiratory infections.



Description	Mfr. No.	Cat. No.
Revogene PCR Analyzer	610210	23-029-051
Meridian Bioscience Revogene Strep A	410400	23-029-055
Meridian Bioscience Revogene GBS LB	410200	23-029-053
Meridian Bioscience Revogene <i>C. difficile</i>	410300	23-029-054
Meridian Bioscience Revogene Carba C	410500	23-029-056
Meridian Bioscience Revogene SARS-CoV-2	410700	23-029-057



## Quidel Solana Molecular Platform

The Quidel™ Solana™ Molecular Platform provides influenza A and B results in 45 minutes and performs up to 12 tests per run. The analyzer includes access to the Quidel proprietary wireless data management and surveillance system. Other CLIA-moderate assays for bacterial infections and infectious diseases are available for the Solana platform.



Description	Mfr. No.	Cat. No.
Solana Instrument, Includes Analyzer, 95° C Lysis Heat Block, Printer, Labels, Tray, Racks (3), Stylus	M900	23-043-111
Quidel Solana SARS Assay LYO 48/PK	M312	23-044-177
Quidel Solana SARS LYO/UTM/NP 48/PK	M960	23-044-178
Quidel Solana SARS LYO/UTM/POLY 48/PK	M961	23-044-179
Quidel Solana SARS LYO STRTR KT 48/PK	M962	23-044-180
Quidel Solana RSV+hMPV Assay Kit	M306	23-043-123
Quidel Solana STREP Complete Kit	M305	23-043-109
Quidel Molecular Strep A+G Control Set	M111	23-043-150
Quidel Solana Flu Assay Startup Kit	M300	23-043-107
Quidel Solana Group A Streptococcus Test Kit	M301	23-043-100
Quidel Solana Influenza A+B Control Set	M122	23-043-126
Quidel Solana GBS Assay Kit	M311	23-043-128

## Thermo Fisher Scientific Accula Dock

The Thermo Fisher Scientific™ Accula™ Dock is a portable RT-PCR platform that is used with Accula SARS-CoV-2 Test cassettes to produce qualitative RT-PCR results in ~30 minutes. EUA authorized by the FDA.



Description	Mfr. No.	Cat. No.
Accula Dock	D2000	D2000
Accula SARS-CoV-2 Test Kit	COV4100	COV4100
Accula Flu A/Flu B Test Kit	FAB1100CW	21-000-134
Accula Flu A/Flu B Control Kit	FAB1100CW-C	21-000-135

# Molecular Analyzer Comparison

	Abbott™ ID NOW™ (formerly Alere i)	Meridian Bioscience™ Revogene™	Quidel™ Solana™	Thermo Fisher Scientific™ Accula™ Dock
<b>Catalog Number</b>	<b>23-046-634</b>	<b>23-029-051</b>	<b>23-043-107</b>	<b>D2000</b>
<b>Specimen Type</b>	<ul style="list-style-type: none"> <li>Nasal Swab</li> <li>Nasopharyngeal Swab</li> </ul>	<ul style="list-style-type: none"> <li>Bacterial Colony</li> <li>Broth Growth</li> <li>Stool Specimen</li> <li>Swabs</li> </ul>	<ul style="list-style-type: none"> <li>Nasal Swab</li> <li>Nasopharyngeal Swab</li> </ul>	<ul style="list-style-type: none"> <li>Nasal Swab,</li> <li>Nasal Mid-Turbinate Swab</li> </ul>
<b>CLIA Status</b>	Waived	Moderate	Moderate	
<b>Test Method</b>	Nucleic Acid Amplification	qPCR	Helicase-Dependent Amplification (HDA)	Qualitative RT-PCR
<b>Instrument Connectivity</b>	Yes — Uni- and Bi-Directional		Yes, with Real-Time Mapping and Tracking Capabilities	No
<b>Time to Result</b>	5 Minutes (Positive) 13 Minutes (Negative)	40 to 70 Minutes	45 Minutes (Per Run of 1 to 12 Tests)	30 Minutes
<b>Available Assays</b>	Influenza A & B <ul style="list-style-type: none"> <li>23-046-634</li> </ul> RSV <ul style="list-style-type: none"> <li>23-043-632</li> </ul> SARS-CoV-2 <ul style="list-style-type: none"> <li>23-046-650</li> </ul> Strep A <ul style="list-style-type: none"> <li>23-046-632</li> </ul>	Carba C <ul style="list-style-type: none"> <li>23-029-056</li> </ul> C. difficile <ul style="list-style-type: none"> <li>23-029-054</li> </ul> Group B Strep <ul style="list-style-type: none"> <li>23-029-053</li> </ul> SARS-CoV-2 <ul style="list-style-type: none"> <li>23-029-057</li> </ul> Strep A <ul style="list-style-type: none"> <li>23-029-055</li> </ul>	Influenza A and B <ul style="list-style-type: none"> <li>23-043-107</li> </ul> C. difficile           HSV 1&2/VZV           Strep A, Strep Complete (A,C,G) <ul style="list-style-type: none"> <li>23-043-109</li> <li>23-043-150</li> <li>23-043-100</li> <li>23-043-126</li> </ul> RSV/hMPV <ul style="list-style-type: none"> <li>23-043-123</li> </ul> SARS-CoV-2 <ul style="list-style-type: none"> <li>23-044-177</li> <li>23-044-178</li> <li>23-044-179</li> <li>23-044-180</li> </ul> Trichomonas           Group B Strep <ul style="list-style-type: none"> <li>23-043-128</li> </ul> Bordatella Complete	SARS-CoV-2 <ul style="list-style-type: none"> <li>COV4100</li> </ul>

\*The information being provided is for informational purposes only. There are no warranties, promises, or representations of any kind, expressed or implied, as to the nature, standard, or accuracy of the information being provided. This information does not purport to provide legal or certified coding advice. Policies regarding appropriate coding and payment levels can vary greatly from payer to payer and change over time, therefore it is the individual provider's responsibility to determine appropriate coding, charges, and claims for a particular service as required under federal and state law. It is strongly recommended that providers contact their contracted payers to determine whether the test can be appropriately performed by their personnel.

As of August 31, 2022, these products meet FDA reclassification requirements. Policies regarding reclassification can vary and change over time, therefore it is the individual provider's responsibility to determine whether the test can be appropriately performed by their personnel.

## Abbott DIGIVAL Reader

The Abbott™ DIGIVAL™ Reader is a camera-based benchtop instrument that can objectively interpret results by using a camera to detect the presence of influenza types A and B and identify a completed lateral flow assay, analyze the intensity of the test and control line, and display the results (positive, negative, or invalid) on the color touchscreen.



Description	Mfr. No.	Cat. No
Digival Complete Kit, Includes Reader, Barcode Scanner, Calibration Check Card and Tray, USB	LFR124	23-046-680
Abbott BinaxNOW™ Influenza A&B Card 2	575000	23-046-682
Abbott DIGIVAL Influenza Testing Reader Replacement Parts	MCP1810395	23-046-687
Abbott Flu Starter Kit; 12 A and B Test Card Sets; Thermal Printer	ARFLUBDPRT	23-046-694
Abbott Flu Starter Kit; 12 A and B Test Card Sets	ARFLUBD	23-046-693
Abbott Flu Starter Kit; 3 A and B Test Card Sets; Thermal Printer	ARFLUPRT	23-046-692
Abbott Flu Starter Kit; 3 A and B Test Card Sets	ARFLUSTART	23-046- 691

## BD Veritor Plus System

The BD Veritor™ Plus System is a rapid chromatography immunoassay analyzer for the qualitative detection of influenza A and B viral nucleoprotein antigens. The system is CLIA-waived for nasal and nasopharyngeal swabs and offers two modes: Analyze Now and Walk Away. This multi-assay platform includes tests for influenza A and B, RSV, and strep A.



Description	Mfr. No.	Cat. No
Veritor Point-of-Care Immunoassay Analyzer	256066	B256066
BD Veritor System for Rapid Detection of SARS-CoV-2	256082	B256082
BD Veritor System for Rapid Detection of SARS-CoV-2 & Flu A+B	256088	B256088
BD Veritor System Group A Strep	256040	B256040
BD Veritor System RSV Test Kit for Point-of-Care Settings	256038	B256038
BD Veritor System RSV Test Kit for Laboratory Use Only	256042	B256042
BD Veritor System Flu A+B Kit	256041	B256041
BD Veritor System Clinical Flu A+B Kit	256045	B256045
Accessories for BD Veritor Plus Analyzer, InfoScan Module	256068	B256068
Accessories for BD Veritor Plus Analyzer, Printer Cable	443907	B443907
BD Veritor SARS-CoV-2 Control Swabs	256087	B256087
BD Veritor System RSV Control Swab Set	256061	B256061
BD Veritor System Group A Strep Control Swab Set	256049	B256049
BD Veritor System Flu A+B Control Swab Set	256051	22-351-287
BD Veritor System SARS-CoV-2 Upgrade USB Key	445006	B445006



## LumiraDx Instrument

Innovative microfluidic technology delivers results in minutes when used with LumiraDx SARS-CoV-2 Ag Test strips. Authorized by FDA under EUA for use by laboratories certified under the CLIA, 42 U.S.C. §263a.



Description	Mfr. No.	Cat. No
LumiraDx Instrument for Point-of-Care Testing	L001000330001	22-181-000
LumiraDx SARS-CoV-2 Liquid Control Kit	L016080109002	22-181-002
LumiraDx SARS-CoV-2 Ag Test	L016000109048	22-181-001
LumiraDx Connect Hub	L002040301001	22-181-003
LumiraDx Barcode Scanner	L002060101001	22-181-004
LumiraDx Printer	L002110101001	22-181-005

## Quidel Sofia 2 Analyzer

The Quidel™ Sofia™ 2 Analyzer accurately detects influenza A and B from nasal swabs, nasopharyngeal swabs, and nasal aspirate/wash samples. Its CLIA-waived procedure can produce dual test results from a single sample. The instrument features an easy-to-use interface with customizable settings.



Description	Mfr. No.	Cat. No
Sofia 2 Fluorescent Immunoassay Analyzer	20299	23-043-086
Quidel Sofia 2 CAMPY FIA 25T/PK	20352	23-044-175
Quidel Sofia 2 CAMPY STRTR PK 1X25T/PK	20413	23-044-176
Quidel Sofia & Sofia 2 Lyme FIA Test Kit	20298	23-043-092
Quidel Sofia Strep A FIA; 25 Tests	20253	21-564-100
Quidel Sofia Strep A FIA; 9 Starter Kits	20259	21-564-102
Quidel Sofia Flu Starter Kit; 9 Kits with 25 Tests Per Kit; Includes: Purchased Analyzer	20241	23-043-174
Quidel Sofia Flu Starter Kit; 3 Kits with 25 Tests Per Kit; Includes: Leased Analyzer	20251	23-043-172
Quidel Sofia hCG FIA	20229	23-043-077
Quidel Sofia Starter Kit	20249	23-043-176
Quidel Sofia RSV FIA Immunofluorescence Kit; 1 x 25 Tests	20260	23-043-080
Quidel Sofia RSV FIA Immunofluorescence Kit; 9 x 25 Tests	20265	23-043-082
Quidel Sofia Strep A FIA CLIA-Waived	20274	23-043-083
Quidel Sofia Influenza A+B FIA Kit	20218	23-043-070
Quidel Sofia 2 SARS Antigen Fluorescent Immunoassay (FIA)	20374	23-043-151
Quidel Sofia 2 Flu+SARS Antigen FIA (25T)	20377	23-044-155
Quidel Sofia 2 Flu+SARS Antigen FIA Starter Kit	20395	23-044-156

# Sekisui Diagnostics Acucy Reader

The Sekisui Diagnostics Acucy™ Reader System provides standardized test results in 15 minutes for CLIA-waived procedures. Use with the Sekisui Influenza A&B Test Kit.



Description	Mfr. No.	Cat. No
Acucy System, Includes Reader, Printer, and Other Accessories To Run Acucy Tests	1039	22-321-125
Sekisui Diagnostics Acucy Influenza A&B Test Kit	1010	22-321-128
Sekisui Diagnostics Acucy System Kit	1039B	22-321-127

# Clinical Analyzer and Reader Comparison

	Abbott™ DIGITAL™ Reader	BD Veritor™ Plus Analyzer	LumiraDx Instrument	Quidel™ Sofia™ 2 Analyzer	Sekisui Diagnostics Acuity™ Analyzer
<b>Catalog Number</b>	<b>23-046-680</b>	<b>B256066</b>	<b>22-181-000</b>	<b>23-043-086</b>	<b>22-321-125</b>
<b>Test Method</b>	Lateral Flow	Reflectance	Microfluidic Fluorescence	Fluorescence Detection	Lateral Flow
<b>Analysis Time</b>	15 min.	11 min.	Variable	3 min.	15 min.
<b>Printer Option</b>	Yes	Yes		Yes	Yes
<b>Barcode Reader/Scanner</b>	Optional	Yes	Optional	Yes	Yes
<b>RFID Reader</b>		No	Yes		No
<b>Access Security</b>	Yes	No	Yes	Yes	Yes
<b>USB Port(s)</b>	Yes	Yes	Yes	Yes	Yes
<b>Stored Data</b>	Test Results, QC, Calibration	Optional	Test Results, QC, Calibration	Test Results, QC, Calibration	Test Results, QC, Calibration
<b>Result Storage Capacity</b>	Tests: 1,000 QC: 100 Calibration: 50	Optional	Tests: 1,000 QC: 1,000	Tests: 1,000 QC: 200 Calibration: 200	Tests: 200 QC: 100 Calibration: 200
<b>Instrument Connectivity</b>	Bi-Directional	Optional	Optional	Wireless	USB
<b>Electrical Requirements</b>	120 V with Battery Back-Up	Non-Rechargeable	Rechargeable Lithium Ion	120 V, Rechargeable Lithium	120 V
<b>Use With</b>	Abbot Rapid Tests	Veritor Test Cartridges	LumiraDx Assays	Sofia 2 Test Cassettes	Acuity Test Cassettes
<b>Available Tests</b>	Influenza A, B <ul style="list-style-type: none"> <li>• 23-046-682</li> <li>• 23-046-687</li> <li>• 23-046-694</li> <li>• 23-046-693</li> <li>• 23-046-692</li> <li>• 23-046-691</li> </ul>	Influenza A, B <ul style="list-style-type: none"> <li>• 22-351-287</li> <li>• B256088</li> <li>• B256041</li> <li>• B256045</li> </ul> RSV <ul style="list-style-type: none"> <li>• B256038</li> <li>• B256042</li> <li>• B256061</li> </ul> SARS CoV-2 <ul style="list-style-type: none"> <li>• B256082</li> <li>• B256088</li> <li>• B256087</li> <li>• B445006</li> </ul> Strep A <ul style="list-style-type: none"> <li>• B256040</li> <li>• B256049</li> </ul> B256068 B443907	SARS-CoV-2 <ul style="list-style-type: none"> <li>• 22-181-002</li> <li>• 22-181-001</li> <li>• 22-181-003</li> <li>• 22-181-004</li> <li>• 22-181-005</li> </ul>	Campylobacter <ul style="list-style-type: none"> <li>• 23-044-175</li> <li>• 23-044-176</li> </ul> Flu+SARS <ul style="list-style-type: none"> <li>• 23-043-077</li> <li>• 23-043-083</li> </ul> hCG           Influenza A, B <ul style="list-style-type: none"> <li>• 23-043-174</li> <li>• 23-043-172</li> <li>• 23-043-070</li> <li>• 23-043-176</li> </ul> Lyme Disease <ul style="list-style-type: none"> <li>• 23-043-092</li> </ul> RSV <ul style="list-style-type: none"> <li>• 23-043-080</li> <li>• 23-043-082</li> </ul> SARS CoV-2 Ag <ul style="list-style-type: none"> <li>• 23-043-151</li> <li>• 23-044-155</li> <li>• 23-044-156</li> </ul> Strep A <ul style="list-style-type: none"> <li>• 21-564-100</li> <li>• 21-564-102</li> </ul>	Influenza A, B <ul style="list-style-type: none"> <li>• 22-321-128</li> <li>• 22-321-127</li> </ul>





# Influenza, RSV, and Strep Diagnostics

Find the high-performance equipment and assays you need to rapidly and accurately detect influenza A and B, RSV, and strep.

## Sure-Vue Signature Influenza A&B Test

Rapidly detect influenza type A and B antigens from nasal and nasopharyngeal swab specimens with the Sure-Vue™ Signature Influenza A&B Test, a rapid CLIA-waived immunochromatographic test that is accurate, efficient, and cost effective.



Description	CLIA Complexity	Quantity	Mfr. No.	Cat. No.
Sure-Vue Signature Influenza A And B Test Kit, Includes Test Sticks, Nasal Swabs, Extraction Buffer Vials, Influenza A+ And Influenza B+ Control Swabs	Waived	25 Tests		23-200-279

## Abbott BinaxNOW Influenza A&B Card 2 Tests

Abbott™ BinaxNOW™ Influenza A&B Card 2 Tests are the first rapid antigen influenza tests to achieve 510(k) clearance as a Class II assay under the new FDA reclassification performance requirements. Use with either a nasopharyngeal swab or nasal swab specimen. Requires Abbott DIGIVAL™ Reader.



Description	CLIA Complexity	Quantity	Mfr. No.	Cat. No.
BinaxNOW Influenza A&B Card 2 Test Kit, Includes Controls, Collection Swabs	Waived	22 Tests	575000	23-046-682

## Abbott ID NOW Influenza A and B 2

The Abbott ID NOW™ Influenza A and B 2 rapid molecular test enables qualitative detection of influenza A and B using isothermal nucleic acid amplification technology and provides positive results in as few as five minutes. For use with the Abbott ID NOW instrument.



Description	CLIA Complexity	Quantity	Mfr. No.	Cat. No.
ID NOW Influenza A and B 2	Waived	24 Tests	427000	23-046-634

## BD Veritor System Clinical Flu A+B Kit

### BD Veritor System Clinical Flu A+B Kit

The BD Veritor™ System Clinical Flu A+B Kit enables rapid detection of influenza A and B when used with the BD Veritor Plus Analyzer.



Description	CLIA Complexity	Quantity	Mfr. No.	Cat. No.
Clinical Flu A+B Kit, Includes Lateral Flow Test Strips, Pipettes, Flu A+/B- Control Swab, Flu B+/A- Control Swab, RV Reagent C in Tubes; for Use at the Point of Care	Waived	30 Tests	256045	B256045
Clinical Flu A+B Kit, Includes Lateral Flow Test Strips, Pipettes, Flu A+/B- Control Swab, Flu B+/A- Control Swab, RV Reagent C in Tubes; for Laboratory Use	Moderate	30 Tests	256041	B256041

## Germaine Laboratories BioSign Test

The Germaine Laboratories™ BioSign™ Flu A&B Test can detect the presence of influenza A and B antigens from a single specimen. The method is CLIA-waived when used with nasal or nasopharyngeal swabs and CLIA-moderate for nasal wash/aspirate specimens. This rapid test can produce results in 10 to 15 minutes.



Description	CLIA Complexity	Quantity	Mfr. No.	Cat. No.
BioSign Flu A&B Test Kit, Includes Positive and Negative Control Swabs	<ul style="list-style-type: none"> <li>• Waived (Nasal Swab)</li> <li>• Moderate (Wash/Aspirate)</li> </ul>	25 Tests	BSP51025	23-111-369

## Meridian Bioscience ImmunoCard STAT! Test

The Meridian Bioscience™ ImmunoCard STAT!™ FLU A&B Test is a CLIA-waived lateral flow immunoassay for the detection of influenza A and B from nasal and nasopharyngeal swabs. It can also be used to test nasal aspirate and wash specimens.



Description	CLIA Complexity	Quantity	Mfr. No.	Cat. No.
Immunocard Stat! Flu A&B Test Kit, Includes Test Devices, Buffer Ampules, Flocked Swabs, Control Swabs (1 Positive, 1 Negative)	<ul style="list-style-type: none"> <li>• Waived (Nasal, Nasopharyngeal Swabs)</li> <li>• Moderate (Wash/Aspirate)</li> </ul>	32 Tests	782030	23-315-126



## Quidel QuickVue Influenza A+B Test

The Quidel™ QuickVue™ Influenza A+B Test detects and differentiates influenza A and B antigens directly from nasal swab and nasopharyngeal swab specimens. A single sample can be used to run both the QuickVue Influenza A+B Test and the QuickVue RSV10 Test.



Description	CLIA Complexity	Quantity	Mfr. No.	Cat. No.
QuickVue Influenza A+B Test Kit, Includes External Controls: Positive for A, Positive for B, and Negative	Waived	25 Tests	20183	23-043-058

## Quidel Sofia Influenza A+B FIA Kit

The Quidel Sofia™ Influenza A+B FIA Kit provides results in 15 minutes and is for rapid differential diagnosis of acute influenza A and influenza B viral infections. It is CLIA waived for nasal and nasopharyngeal swab specimens.



Description	CLIA Complexity	Quantity	Mfr. No.	Cat. No.
Quidel Sofia Influenza A+B FIA Kit	Waived for Nasal and Nasopharyngeal Swab Specimens	25 Tests	20218	23-043-070

## Quidel Solana Flu Assay Startup Kit

The Quidel Solana™ Flu Assay Startup Kit is for rapid differential diagnosis of acute influenza A and influenza B viral infections. CLIA moderate.



Description	CLIA Complexity	Quantity	Mfr. No.	Cat. No.
Quidel Solana Flu Assay Startup Kit, Includes Process Buffer and Reaction Tubes	Moderate	48 Tests	M300	23-043-107

### Sekisui Diagnostics Acucy Influenza A&B Test Kit

The Sekisui Diagnostics Acucy™ Influenza A&B Test Kit is a lateral flow in vitro diagnostic for the rapid qualitative detection of influenza A and B that is automatically analyzed on the Acucy Reader.



Description	CLIA Complexity	Quantity	Mfr. No.	Cat. No.
Acucy Influenza A&B Test Kit, Includes Two Extra Test for Quality Control	Waived	25 Tests	1010	22-321-128

### Sekisui Diagnostics OSOM Ultra Plus Influenza A&B Test

The Sekisui OSOM™ Ultra Plus Influenza A&B Test is a rapid CLIA-waived immunochromatographic test for the qualitative detection of influenza type A and type B antigens from nasal and nasopharyngeal swab specimens from symptomatic patients.



Description	CLIA Complexity	Quantity	Mfr. No.	Cat. No.
Osom Ultra Plus Flu A&B Test Kit, Includes Test Sticks, Nasal Swabs, Extraction Buffer Vials, Influenza A+ And Influenza B+ Control Swabs	Waived	25 Tests	1032	22-321-130

### Thermo Scientific Xpect Flu A&B Test

The Thermo Scientific™ Xpect™ Flu A&B Test detects influenza A and B antigens from human nasal wash, nasal swab, and throat swab specimens. It helps maintain efficiency and productivity with a simple two-step procedure that offers accurate results in as little as 15 minutes.



Description	CLIA Complexity	Quantity	Mfr. No.	Cat. No.
Xpect Flu A & B Test Kit, Includes Test Devices, Specimen Diluent, Dilution Tubes, Transfer Pipettes, Flu A+/B- And Flu B+/A- Control Swabs	Moderate	20 Tests	R24600	R24600

# Influenza Assay Comparison

	Abbott™ BinaxNOW™ Influenza A&B Card 2	Germaine Laboratories™ BioSign™ Influenza A&B Test	Meridian Bioscience™ Immunocard STAT!™ Test
<b>Catalog Number</b>	<b>23-046-682</b>	<b>23-111-369</b>	<b>23-315-126</b>
<b>Specimen Type</b>	<ul style="list-style-type: none"> <li>Nasal Swab</li> <li>Nasopharyngeal Swab</li> </ul>	<ul style="list-style-type: none"> <li>Nasal Swab</li> <li>Nasopharyngeal Swab</li> <li>Nasopharyngeal Wash/Aspirate</li> </ul>	<ul style="list-style-type: none"> <li>Nasal Swab</li> <li>Nasopharyngeal Swab</li> <li>Nasal Aspirate/Wash</li> </ul>
<b>CLIA Status</b>	Waived	Waived (Nasal and Nasopharyngeal Swabs) Moderate (Wash/Aspirate)	Waived (Nasal and Nasopharyngeal Swabs); Moderate (Wash/Aspirate)
<b>Test Method</b>	Lateral Flow	Lateral Flow	Lateral Flow
<b>Instrument Connectivity</b>	Yes — Bidirectional	No	No
<b>Time to Result</b>	15 Minutes	<ul style="list-style-type: none"> <li>10 Minutes (Positive)</li> <li>15 Minutes (Negative)</li> </ul>	15 Minutes or Sooner
<b>Recommend Negative Confirmation</b>	Yes	Yes	Yes
<b>Comparison Method</b>		RT-PCR	Culture and PCR
<b>Sensitivity: A/B (May Depend on Sample Type)</b>	81%/65% (Cell Culture/DFA)	96.7% (Both A and B)	85.7%/97.5% (Culture) 99.4%/99% (PCR)
<b>Specificity: A/B (May Depend on Sample Type)</b>	97%/100% (Cell Culture/DFA)	91% (Both A and B)	85.7%/97.5% (culture) 99.4%/99% (PCR)
<b>Tests Per Kit</b>	20 (Plus Two for QC)	25	32
<b>Meets FDA Flu Reclassification Requirements</b>	Yes	Yes	Yes
<b>Other Tests Available</b>	NA	Strep A	NA



# Influenza Assay Comparison

	Sure-Vue™ Signature Influenza A&B Test	Quidel™ QuickVue™ Influenza A&B Test	Thermo Scientific™ Xpect™ Flu A & B Test
<b>Catalog Number</b>	<b>23-200-279</b>	<b>23-043-058</b>	<b>R24600</b>
<b>Specimen Type</b>	<ul style="list-style-type: none"> <li>Nasal Swab</li> <li>Nasopharyngeal Swab</li> </ul>	<ul style="list-style-type: none"> <li>Nasal Swab</li> <li>Nasopharyngeal Swab</li> </ul>	<ul style="list-style-type: none"> <li>Nasal Swab</li> <li>Nasal Wash</li> <li>Throat Swab</li> </ul>
<b>CLIA Status</b>	Waived	Waived	Moderate
<b>Test Method</b>	Lateral Flow	Lateral Flow	Lateral Flow
<b>Instrument Connectivity</b>	No	No	NA
<b>Time to Result</b>	10 Minutes	10 Minutes or Less	15 Minutes
<b>Recommend Negative Confirmation</b>	Yes	Yes	Yes
<b>Comparison Method</b>	Composite Comparator (Culture and Molecular)	PCR	Culture and PCR for Discrepant
<b>Sensitivity: A/B (May Depend on Sample Type)</b>	90.3%/88% (PCR)	81.9%/80.9%	A+92.2%/B=97.8%
<b>Specificity: A/B (May Depend on Sample Type)</b>	96.7%/99.2% (PCR)	97.8%/99.1%	100%
<b>Tests Per Kit</b>	25	25	20
<b>Meets FDA Flu Reclassification Requirements</b>	Yes	Yes	Yes
<b>Other Tests Available</b>	NA	NA	NA

As of August 31, 2022, these products meet FDA reclassification requirements. Policies regarding reclassification can vary and change over time, therefore it is the individual provider's responsibility to determine whether the test can be appropriately performed by their personnel.

## Abbott Clearview RSV Test Kit

The Abbott Clearview™ RSV Test Kit features CLIA-waived antigen tests that produce results in 15 minutes from nasopharyngeal (NP) swabs or aspirate. Cleared for children under six years of age and adults over 60. Kits include test devices, extraction tubes and reagent, disposable pipettes, and positive and negative controls.



Product Name	CLIA Complexity	Quantity	Mfr. No.	Cat. No.
Clearview RSV Test Kit	Waived	20 Tests	135060	<b>WA135060</b>

## Meridian Bioscience TRU RSV Tests

Meridian Bioscience™ TRU RSV™ Tests are rapid CLIA-moderate complexity assays that produce visual results in 15 minutes using nasal swab, aspirate, or wash specimens. Include test strip, disposable pipettes, conjugate tube, and diluent/negative control.



Product Name	CLIA Complexity	Quantity	Mfr. No.	Cat. No.
TRU RSV Tests	Moderate	32 Tests	751330	<b>23-030-701</b>

## Sure-Vue RSV Test Kit

The Sure-Vue™ RSV Test Kit includes both CLIA-waived and moderate-complexity methods (for mucoid or bloody specimens) to visually detect RSV antigen from nasopharyngeal specimens from neonatal and pediatric patients in less than 15 minutes. Confirmation of negative test results by cell culture is recommended. Includes test devices, extraction tubes and reagent, and disposable pipettes.



Product Name	CLIA Complexity	Quantity	Mfr. No.	Cat. No.
Sure-Vue RSV Test Kit	Waived/Moderate	30 Tests	N/A	<b>SA041130</b>

## Abbott ID NOW RSV Test Kit

The Abbott ID NOW™ RSV Test Kit features CLIA-waived antigen tests that produce results in 13 minutes. Samples can be collected using nasopharyngeal (NP) swabs or NP swabs eluted with viral transport media (VTM\*). Includes test bases, sample receivers, transfer cartridges, NP swabs, positive and negative control swabs, disposable pipettes, and VTM.



Product Name	CLIA Complexity	Quantity	Mfr. No.	Cat. No.
ID NOW RSV Test Kit	Waived	24 Tests	435000	23-043-632

\*Approved VTM: BD/Copan VTM, Remel M4, Remel M4RT, Remel M5, Remel M6, or Copen ESwab

## Abbott BinaxNOW RSV Lateral Flow Test Kits

Abbott BinaxNOW™ RSV Lateral Flow Test Kits were developed for neonatal and pediatric patients under the age of five to detect viral antigens in 15 minutes. The test works with a nasal wash or NP swab sample. Choose CLIA-waived or moderate-complexity versions. Kits include test cards, transfer pipettes, control swabs, and control reagents. Waived test kits include collection swabs, elution reagent, and transport vials.



Product Name	CLIA Complexity	Quantity	Mfr. No.	Cat. No.
BinaxNOW RSV Lateral Flow Test Kits	Waived	10 Tests	430100	BNX430100
		22 Tests	430122	BNX430122
	Moderate	42 Tests	430000	BNX430000

## BD Veritor System RSV Test Kit

The BD Veritor™ System RSV Test Kit is used to detect RSV infections in infants and pediatric patients under the age of 20 years. Kits include test devices, collection swabs, reagent, and positive and negative control swabs.



Product Name	CLIA Complexity	Quantity	Mfr. No.	Cat. No.
Veritor System RSV Test Kit	Waived	30 Tests	256038	B256038
	Moderate	30 Tests	256042	B256042

## Quidel QuickVue RSV Tests

For testing nasopharyngeal swabs or aspirate/wash specimens from symptomatic pediatric patients. Waived dipstick procedure produces results in approximately 10 minutes; results from the moderately complex assay in 15 minutes. Quidel™ QuickVue™ RSV Test kits include test strips, extraction tubes and reagent, disposable droppers, collection swabs, and positive and negative control swabs.



Product Name	CLIA Complexity	Quantity	Mfr. No.	Cat. No.
Quickvue RSV Test Kit, Includes Nasopharyngeal Swabs And Positive And Negative Control	Waived	20 Tests	20193	<b>23-038-089</b>
Quickvue RSV 10 Test Kit, Includes Nasopharyngeal Swabs, External Control, And Built-In Internal Control	Moderate	25 Tests	20222	<b>23-038-150</b>

## Quidel Sofia RSV FIA Immunofluorescence Kit

Use the Quidel Sofia™ RSV FIA Immunofluorescence Kit for rapid qualitative detection of RSV nucleoprotein antigens.



Product Name	CLIA Complexity	Quantity	Mfr. No.	Cat. No.
Sofia RSV FIA Immunofluorescence Kit, Includes Cassettes, Reagent Tubes, Reagent Solution, Swabs, Pipettes, and Controls	Waived	25 Tests	20260	<b>23-043-080</b>
Sofia RSV FIA Immunofluorescence Kit, Includes Cassettes, Reagent Tubes, Reagent Solution, Swabs, Pipettes, and Controls	Waived	Pack of 225	20265	<b>23-043-082</b>

## Quidel Solana RSV+hMPV Assay Kit

The Quidel™ Solana™ RSV+hMPV Assay is a rapid qualitative in vitro diagnostic test for the detection and differentiation of RSV and human metapneumovirus (hMPV) viral RNA in nasal and nasopharyngeal swabs from patients with signs and symptoms of respiratory infection.

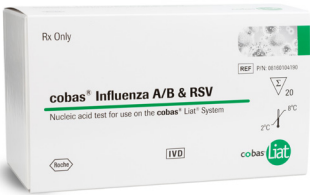


Product Name	CLIA Complexity	Quantity	Mfr. No.	Cat. No.
Solana RSV+hMPV Assay Kit, Includes Process Buffer and Reaction Tubes	Moderate	48 Tests	M306	<b>23-043-123</b>



# Roche Diagnostics cobas Liat Influenza A/B + RSV Assay

The Roche Diagnostics cobas™ Liat Influenza A/B + RSV Assay is a CLIA-waived and automated multiplex assay that uses RT-PCR technology to detect and discriminate between influenza A and B virus and RSV RNA in nasopharyngeal swab specimens with results in 20 minutes. Kit includes assay tubes and transfer pipettes.



Product Name	CLIA Complexity	Quantity	Mfr. No.	Cat. No.
cobas Liat Influenza A/B + RSV Assay <sup>¥</sup>	Waived	20 Tests	08160104190	23-312-200

\*\* Requires Quidel™ Solana™ Analyzer  
¥ Requires Roche cobas Liat Analyzer  
§ Requires BD™ Veritor™ Reader  
H Requires Abbott™ ID NOW™ Analyzer

## Controls for RSV Assays

Product Name	Quantity	Mfr. No.	Cat. No.
Abbott Control Swabs for BinaxNOW™ RSV Assays, 10 Positive, 10 Negative Controls	20 Controls	430080	<b>BNX430080</b>
Roche Diagnostics cobas™ Liat Control Kit for Influenza A/B + RSV Assay, 3 Positive Controls and UTM Diluent (Used as Negative Control)	Kit	07402686190	<b>23-312-203</b>
Microbiologics™ Helix Elite™ Inactivated Respiratory Syncytial Virus A, Unassayed – Molecular Testing	5 Pellets	HE0028N	<b>23-047-385</b>

# RSV Assay Comparison

Product	Specimen	Test Duration	Sensitivity	Specificity	CLIA Complexity	Quantity	Cat. No.
Abbott Clearview™ RSV Test Kit	Nasopharyngeal (NP) Swab or Aspirate	15 Minutes	93.8%	97.7%	Waived	20 Tests	WA135060
Abbott ID NOW™ RSV Test Kit <sup>H</sup>	NP Swab or NP Swab in Viral Transport Media	13 Minutes	98.6%	98%	Waived	24 Tests	23-043-632
Abbott BinaxNOW™ RSV Lateral Flow Test Kits <sup>H</sup>	Nasal Wash or NP Swab	15 Minutes	Nasal Wash: 89% NP Swabs: 93%	Nasal Wash: 100% NP Swabs: 93%	Moderate	42 Tests	BNX430000
Abbott BinaxNOW RSV Lateral Flow Test Kits <sup>H</sup>	Nasal Wash or NP Swab	15 Minutes	Nasal Wash: 89% NP Swabs: 93%	Nasal Wash: 100% NP Swabs: 93%	Waived	10 Tests	BNX430100
Abbott BinaxNOW RSV Lateral Flow Test Kits <sup>H</sup>	Nasal Wash or NP Swab	15 Minutes	Nasal Wash: 89% NP Swabs: 93%	Nasal Wash: 100% NP Swabs: 93%	Waived	22 Tests	BNX430122
BD Veritor™ System RSV Test Kit <sup>§</sup>	NP Swab	11 Minutes	91.8%	93.3%	Waived	30 Tests	B256038
BD Veritor System RSV Test Kit <sup>§</sup>	NP Swab, Wash, or Aspirate	Less Than 1 Minute			Moderate	30 Tests	B256042
Sure-Vue™ RSV Test Kit	Nasal Swab, Wash, or Aspirate	15 Minutes	>99%	>99%	Waived/ Moderate	30 Tests	SA041130
Meridian Bioscience™ TRU RSV™ Tests	Nasal Swab, Wash, or Aspirate	15 Minutes			Moderate	32 Tests	23-030-701
Quidel™ QuickVue™ RSV Test Kit	NP Swab or Aspirate	15 Minutes	92%	92%	Waived	20 Tests	23-038-089
Quidel QuickVue RSV 10 Test	Nasal Swab, Wash, or Aspirate	10 Minutes	88%	95.5%	Moderate	25 Tests	23-038-150
Quidel™ Solana™ RSV+hMPV Assay Kit <sup>**</sup>	Nasal Swab or NP Swab in Transport Media	~45 Minutes	RSV: 95.5% hMPV: 95.6%	RSV: 99.9% hMPV: 99.8%	Moderate	48 Tests	23-043-123
Roche Diagnostics cobas™ Liat Influenza A/B + RSV Assay <sup>¥</sup>	NP Swab	20 Minutes	A/B: 98.4/97.9% RSV: 97.8%	A/B: 96.5/99.4% RSV: 98.4%	Waived	20 Tests	23-312-200

<sup>\*\*</sup> Requires Quidel™ Solana™ Analyzer

<sup>¥</sup> Requires Roche cobas™ Liat Analyzer

<sup>§</sup> Requires BD Veritor™ Reader

<sup>H</sup> Requires Abbott™ ID NOW™ Analyzer

## Sure-Vue Strep A Lateral Flow Test Kit

The Sure-Vue™ Strep A Lateral Flow Test Kit is a one-step lateral-flow immunoassay for the qualitative detection of Group A Streptococcal antigen from throat swabs in just five minutes. Test packs include swabs, extraction reagent, membrane strips, and positive and negative controls.



Product Name	CLIA Complexity	Quantity	Mfr. No.	Cat. No.
Sure-Vue Strep A Lateral Flow Test Kit	Waived	27 Tests	N/A	23-900-532

## Abbott Acceava Strep A Test

The Abbott Acceava™ Strep A Test detects Group A Streptococcal antigens in throat swabs. Positive results in as little as one minute. Includes swabs, extraction tubes and reagents, test strips, and controls.



Product Name	CLIA Complexity	Quantity	Mfr. No.	Cat. No.
Acceava Strep A Test	Waived	50 Tests	4580295008	23-875-550C

## Abbott BinaxNOW Streptococcus pneumoniae Antigen Card Test Kit

The Abbott BinaxNOW™ *S. pneumoniae* Antigen Card can assist in the diagnosis of pneumococcal pneumonia and pneumococcal meningitis. It qualitatively detects *S. pneumoniae* antigen in urine (for pneumonia) and in cerebral spinal fluid (CSF) (for meningitis) and produces results in 15 minutes. Includes test devices, reagents, swabs, and positive and negative controls.



Product Name	CLIA Complexity	Quantity	Mfr. No.	Cat. No.
BinaxNOW Streptococcus pneumoniae Antigen Card Test Kit	Moderate	22 Tests	710000	BNX710000

## Abbott Clearview Strep A Exact II Test Kits

The Abbott Clearview™ Strep A Exact II Test Kit includes dipstick tests that directly detect the presence of Group A Streptococcal antigen in patient throat swabs. Provides results in five minutes. Includes swabs, extraction tubes and reagents, test strips, and controls.



Product Name	CLIA Complexity	Quantity	Mfr. No.	Cat. No.
Clearview Strep A Exact II Test Kit	Waived	30 Tests	4581225020	<b>23-046-599</b>

## Meridian Bioscience ImmunoCard STAT! Strep A Test Kit

The Meridian Bioscience™ ImmunoCard™ STAT! Strep A Test Kit is a set of lateral flow one-step immunoassays to detect Strep A antigens in human throat swabs in 10 minutes. Includes swabs, extraction tubes and reagent, test strips, and positive and negative controls.



Product Name	CLIA Complexity	Quantity	Mfr. No.	Cat. No.
ImmunoCard STAT! Strep A Test Kit	Waived	50 Tests	755250	<b>23-030-153</b>

## Meridian Bioscience Revogene GBS LB

Meridian Bioscience™ Revogene™ GBS LB assay is a qualitative in vitro diagnostic test to detect Group B Streptococcus (GBS) DNA from 18 to 24 hour LIM broth enrichments of vaginal/rectal specimen swabs obtained from pregnant women.



Product Name	CLIA Complexity	Quantity	Mfr. No.	Cat. No.
Revogene™ GBS LB, Includes One Sample Buffer Tube (SBT); One Disposable Transfer Tool (DTT); One GBS LB PIE	Waived	24 Tests	410200	<b>23-029-053</b>



## Quidel QuickVue Dipstick Strep A Test

The Quidel™ QuickVue™ Dipstick Strep A Test detects Group A Streptococcal antigen from throat swab specimens or confirms presumptive Group A Strep colonies recovered from culture media. Provides results in five minutes.



Product Name	CLIA Complexity	Quantity	Mfr. No.	Cat. No.
QuickVue Dipstick Strep A Test	Waived	50 Tests	20108	23-043-051
Quidel QuickVue Strep A Control Swab Set, 6 Positive, 6 Negative Controls	NA	12	00345	23-043-046

## SAS StrepAlert (Dipstick) Strep A Test Kit

The SAS™ StrepAlert™ (Dipstick) Strep A Test Kit contains membrane immunoassays that detect Strep A antigens from throat swabs in as little as 5 minutes. Includes test strips, throat swabs, extraction tubes and reagents, and positive and negative controls.



Product Name	CLIA Complexity	Quantity	Mfr. No.	Cat. No.
SAS StrepAlert (Dipstick) Strep A Test Kit	Waived/Moderate	30 Tests	COL611530	SACOL611530

## Sekisui Diagnostics OSOM Strep A Test Kit

The Sekisui Diagnostics OSOM™ Strep A Test Kit offers qualitative detection of Group A Strep antigen from throat swabs or from colonies recovered from culture media (blood agar plates less than 72 hours old) in five minutes. Includes test strips, tubes and reagents, swabs, and positive and negative controls.



Product Name	CLIA Complexity	Quantity	Mfr. No.	Cat. No.
Sekisui Diagnostics OSOM Strep A Test Kit	Waived	50 Tests	141	22-071-059

## Sekisui Diagnostics OSOM Ultra Strep A Test Kit

The Sekisui Diagnostics OSOM™ Ultra Strep A Test Kit is a color immunochromatographic assay for the qualitative detection of Group A Streptococcus antigen from throat swab specimens that produces results in five minutes. Kits include test strips, swabs, tubes and extraction reagent, and positive and negative controls.



Product Name	CLIA Complexity	Quantity	Mfr. No.	Cat. No.
Sekisui Diagnostics OSOM Ultra Strep A Test Kit	Waived	25 Tests	147	<b>22-071-067</b>

## BD Veritor System Group A Strep Assay

The BD Veritor™ System Group A Strep Assay is a rapid chromatographic immunoassay for the direct and qualitative detection of Group A Streptococcus antigen from throat swabs of symptomatic patients. Provides results in six minutes. Confirmation by culture of negative results is recommended. Package includes test devices/strips, tubes and reagents, swabs, and positive and negative controls.



Product Name	CLIA Complexity	Quantity	Mfr. No.	Cat. No.
Veritor System Group A Strep Assay	Waived	30 Tests	256040	<b>B256040</b>

## Quidel Sofia Strep A FIA Test Kit

Used with a Quidel Sofia Analyzer, the Quidel™ Sofia™ Strep A FIA Test Kit is a rapid fluorescence immunoassay (FIA) that can detect Group A *Streptococcal* antigen within five minutes. Kit includes test cassettes, tubes and reagents, collection swabs, and positive and negative controls.



Product Name	CLIA Complexity	Quantity	Mfr. No.	Cat. No.
Sofia Strep A FIA Test Kit	Moderate	25 Tests	20253	<b>21-564-100</b>
Sofia Strep A FIA CLIA-Waived	Waived	25 Tests	20274	<b>23-043-083</b>
Sofia Strep A FIA	Moderate	225 Tests	20259	<b>21-564-102</b>

# Abbott ID NOW Strep A 2 Test Kit

The Abbott ID NOW™ CLIA-waived and analyzer-based rapid molecular test produces positive results in as little as six minutes. It qualitatively detects nucleic acids from Group A Streptococcus in symptomatic patients. Kit includes test devices, tubes and reagents, transfer cartridges, throat swabs, and positive and negative control swabs.



Product Name	CLIA Complexity	Quantity	Mfr. No.	Cat. No.
ID NOW Strep A 2 Test Kit <sup>®</sup>	Waived	24 Tests	734000	23-046-632

## Quidel Solana Group A Streptococcus Test Kit

The Quidel™ Solana™ Group A Streptococcus Test Kit is for the qualitative detection of nucleic acids Group A  $\beta$ -hemolytic Streptococcus using helicase-dependent amplification (HDA). Uses throat swab specimens from symptomatic patients to produce results in 35 minutes. Kit includes reaction tubes and dilution and lysis buffers.



Product Name	CLIA Complexity	Quantity	Mfr. No.	Cat. No.
Solana Group A Streptococcus Test Kit**	Moderate	48 Tests	M301	23-043-100

## Quidel Solana GBS Assay Kit

The Quidel Solana GBS Assay is an in vitro diagnostic test for the direct, qualitative detection of Group B Streptococcus from vaginal/rectal swabs following 18 to 24 hours incubation in LIM or Carrot broth cultures.



Product Name	CLIA Complexity	Quantity	Mfr. No.	Cat. No.
Solana GBS Assay Kit, Includes Process Buffers and Reaction Tubes	Moderate	48 Tests	M311	23-043-128

## Quidel Solana STREP Complete Kit

The Quidel™ Solana™ STREP Complete Kit provides rapid qualitative detection of nucleic acids from Group A  $\beta$ -hemolytic Streptococcus and pyogenic Group C/G from throat swabs. Uses helicase-dependent amplification (HDA) to produce results in 35 minutes. Kit includes reaction tubes and dilution and lysis buffers.



Product Name	CLIA Complexity	Quantity	Mfr. No.	Cat. No.
Solana STREP Complete Kit**	Moderate	48 Tests	M305	23-043-109

# Roche Diagnostics cobas Liat Strep A Assay

The Roche Diagnostics cobas™ Liat Strep A Assay is a qualitative diagnostic test for evidence of *Streptococcus pyogenes* in throat swab specimens from symptomatic patients. Uses nucleic acid purification and PCR technology to produce results in 15 minutes.



Product Name	CLIA Complexity	Quantity	Mfr. No.	Cat. No.
cobas Liat Strep A Assay*	Waived	20 Tests	07341911190	23-312-199
cobas Liat Strep A Control Kit	NA	NA	07402678190	23-312-202

\* Requires Quidel™ Sofia™ Analyzer  
\*\* Requires Quidel Solana Analyzer  
‡ Requires Roche cobas Liat Analyzer  
§ Requires BD Veritor™ Reader  
H Requires Abbott™ ID NOW™ Analyzer



# Strep Comparison

Strep A Assay	Specimen	Detects	Test Duration	Sensitivity	Specificity	CLIA Complexity	Quantity	Cat. No.
<b>Antigen Tests</b>								
Abbott Clearview™ Strep A Exact II Test Kits	Throat Swab	Antigen	5 min.	97%	95%	Waived	30 Tests	23-046-599
Abbott Aceava™ Strep A Test	Throat Swab	Antigen	1 min.	97%	95%	Waived	50 Tests	23-875-550C
Abbott BinaxNOW™ <i>Streptococcus pneumoniae</i> Antigen Card Test Kit	CSF, Urine	Antigen	15 min.	97%	99%	Moderate	22 Tests	BNX710000
BD Veritor™ System – Group A Strep Assay	Throat Swab	Antigen	6 min.	95.4%	95.7%	Waived	30 Tests	B256040
Sure-View™ Strep A Lateral Flow Test Kit	Throat Swab	Antigen	5 min.	97%	95%	Waived	27 Tests	23-900-532
Meridian Bioscience™ ImmunoCard™ STAT!™ Strep A Test Kit	Throat Swab, Culture	Antigen	10 min.	96%	97.8%	Waived	50 Tests	23-030-153
Quidel QuickVue™ In-Line™ One-Step Strep A Test	Throat Swab	Antigen	5 min.	92%	99%	Waived	25 Tests	23-043-027
Quidel QuickVue Dipstick Strep A Test	Throat Swab	Antigen	5 min.	92%	98%	Waived	50 Tests	23-043-051
Quidel™ Sofia™ Strep A FIA*	Throat Swab	Antigen	5 min.	90.6%	96.1%	Moderate	25 Tests	21-564-100
SAS™ StrepAlert™ (Dipstick) Strep A Test Kit	Throat Swab	Antigen	5 min.	97.9%	97.3%	Waived/ Moderate	30 Tests	SASACOL611530
Sekisui Diagnostics OSOM™ Strep A Test Kit	Throat Swab, Culture (BAP)	Antigen	5 min.	96%	98%	Waived	50 Tests	22-071-059
Sekisui Diagnostics OSOM™ Ultra Strep A Test Kit	Throat Swab	Antigen	5 min.	96%	100%	Waived	25 Tests	22-071-067
<b>Nucleic Acid Tests</b>								
Abbott ID NOW™ Strep A 2 Test Kit†	Throat Swab	Nucleic Acids	6 min.	98.5%	93.4%	Waived	24 Tests	23-046-632
Quidel™ Solana™ Group A Streptococcus Test Kit**	Throat Swab	Nucleic Acids	35 min.	98.2%	97.2%	Moderate	48 Tests	23-043-100
Quidel Solana STREP Complete Kit**	Throat Swab or Transport Media	Nucleic Acids	35 min.	<i>S. pyogenes</i> : 98.8% <i>S. dysgalactiae</i> : 100%	<i>S. pyogenes</i> : 98.9% <i>S. dysgalactiae</i> : 98.5%	Moderate	48 Tests	23-043-109
Roche Diagnostics cobas™ Liat Strep A Assay†	Throat Swab	Nucleic Acids	15 min.	98.3%	94.2%	Waived	20 Tests	23-312-199

\*Requires Quidel Sofia Analyzer

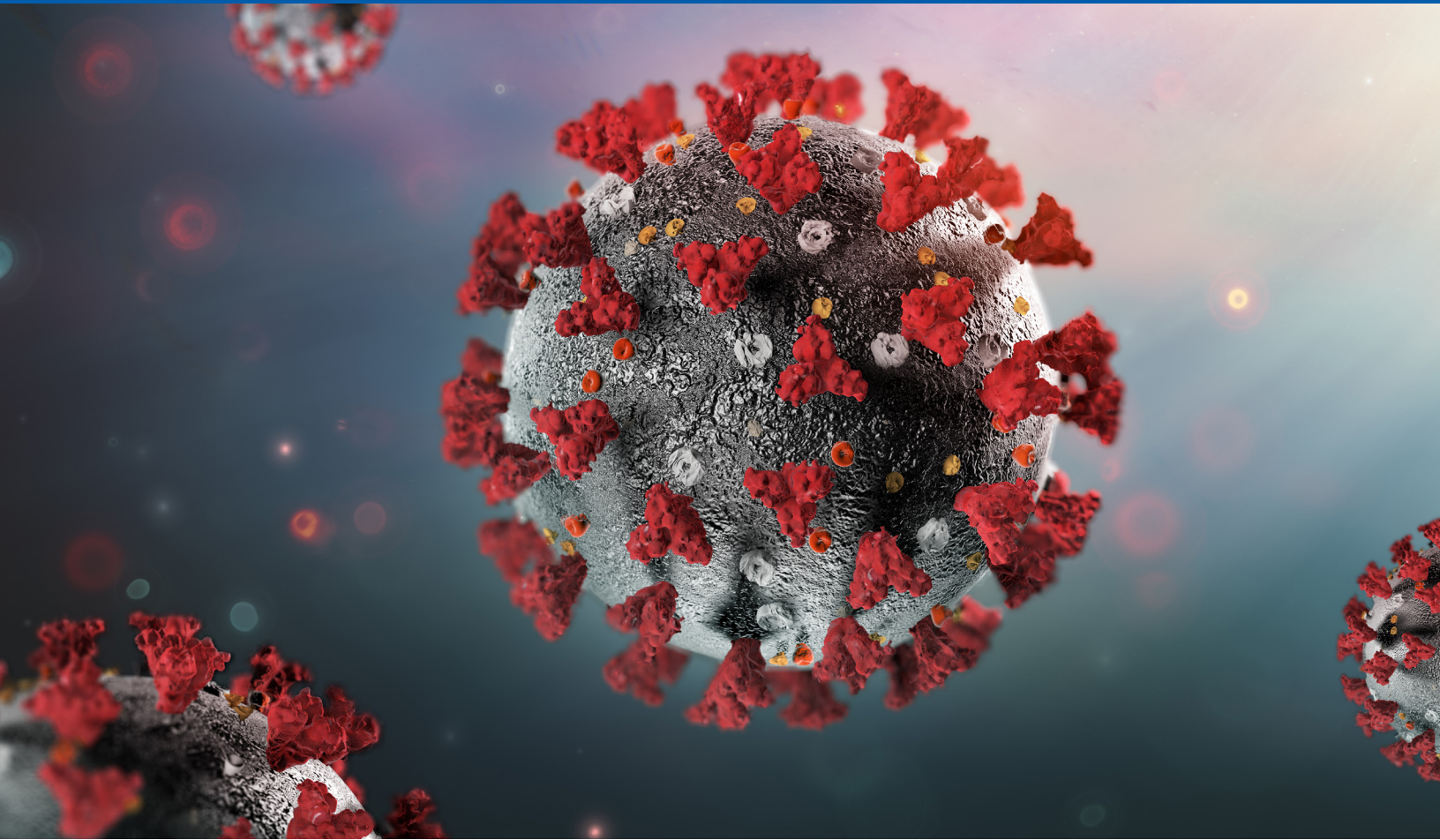
\*\*Requires Quidel Solana Analyzer

†Requires Roche cobas Liat Analyzer

§Requires BD Veritor Reader

‡Requires Abbott ID NOW™ Analyzer

Strep B Assay	Specimen	Detects	Test Duration	Sensitivity	Specificity	CLIA Complexity	Quantity	Cat. No.
<b>Antigen Tests</b>								
Meridian Bioscience Revogene GBS LB	Vaginal/Rectal Swabs from Pregnant Women	DNA	70	97%	95%	Waived	30 Tests	23-046-599
Quidel Solana GBS Assay Kit	Vaginal/Rectal Swabs from Pregnant Women	Nucleic Acids	30 Minutes	97%	95%	Waived	50 Tests	23-875-550C



# COVID-19 Testing

Browse a wide selection of industry-leading COVID-19 testing products, including molecular methods, antigen detection, and serological tests in CLIA-waived, moderate, or high-complexity assays.

The information in this section was accurate as of the August 31, 2022 publishing date.

### Abbott ID NOW COVID-19 2.0

With Abbott ID NOW™ COVID-19 2.0 you can choose to test for COVID-19 only, or COVID-19 and influenza A&B with the same patient swab and get molecular results in as few as six minutes. For use with Abbott ID NOW™ Analyzer under FDA Emergency Use Authorization.



Product Name	Quantity	Mfr. No	Cat. No.
Abbott ID NOW COVID-19 2.0	24 Tests	192-000	23-046-655

### BD Veritor System for Rapid Detection of SARS-CoV-2

The BD Veritor™ System detects nucleocapsid protein from SARS-CoV-2 in 15 minutes in near-patient settings. The test can be run on demand or automated and includes collection swabs in the kit. For use with BD Veritor™ Plus Analyzer under FDA Emergency Use Authorization.



Product Name	Quantity	Mfr. No	Cat. No.
BD Veritor System for Rapid Detection of SARS-CoV-2	30 Tests	256082	B256082

### Meridian Biosciences Revogene SARS-CoV-2 Assay

The Meridian Revogene™ SARS-CoV-2 Assay is a real-time RT-PCR test to qualitatively detect SARS-CoV-2 RNA found in nasopharyngeal, oropharyngeal, anterior nasal, and mid-turbinate nasal swab specimens from individuals suspected by their healthcare practitioner of having COVID-19. Testing is limited to CLIA-certified laboratories that meet the requirements to perform high or moderate complexity tests. Approved under FDA Emergency Use Authorization.



Product Name	Quantity	Mfr. No	Cat. No.
Revogene SARS-CoV-2 Assay	24 Tests	410700	23-029-057

## Quidel Solana SARS-CoV-2 Kits with Lyophilized Master Mix

Quidel™ Solana™ SARS-CoV-2 Kits with Lyophilized Master Mix qualitatively detect nucleic acids from SARS-CoV-2 in nasopharyngeal or nasal swab specimens from patients suspected of having COVID-19. The RT-HDA assays target specific regions of the SARS-CoV-2 virus non-structural Polyprotein (pp1ab). For use with Solana analyzer under FDA Emergency Use Authorization.



Product Name	Quantity	Mfr. No	Cat. No.
Lyo. Solana SARS-CoV-2 Assay Kit, Includes Nasopharyngeal Swabs, Universal Transport Media (UTM)	48 Tests 50 Swab/UTM Sets	<b>M960</b>	<b>23-044-178</b>
Lyo. Solana SARS-CoV-2 Assay	48 Tests	<b>M312</b>	<b>23-044-177</b>
Lyo. Solana SARS-CoV-2 Assay, Includes Nasopharyngeal Swabs, Universal Transport Media (UTM)	48 Tests 50 Swab/UTM Sets	<b>M961</b>	<b>23-044-179</b>
Lyo. Solana SARS-CoV-2 Starter Kit	48 Tests	<b>M962</b>	<b>23-044-180</b>

## Roche Diagnostics cobas Liat SARS-CoV-2 Assay and Control Kit\*

The Roche Diagnostics cobas™ Liat™ nucleic acid test is the first real-time RT-PCR test authorized for point-of-care screening and testing asymptomatic/symptomatic individuals for SARS-CoV-2.



Product Name	Quantity	Mfr. No	Cat. No.
Roche Diagnostics cobas SARS-CoV-2 Assay	20 Tests	<b>09408592190</b>	<b>23-312-207</b>
Roche Diagnostics cobas Sars-Cov-2 Control Kit, Includes 3 Sets of Positive and Negative Controls		<b>09408835190</b>	<b>23-312-208</b>

\*Requires a cobas Liat analyzer

## Ortho Clinical Diagnostics Antibody Tests

Ortho™ Clinical Diagnostics Antibody Tests are highly accurate tests for the detection of COVID-19 antibodies now available on high-throughput, random access, fully automated Ortho™ VITROS™ Systems. For use under FDA Emergency Use Authorization.



### Ortho VITROS Anti-SARS-CoV-2 IgG

Product Name	Mfr. No.	Cat. No.
VITROS Anti-SARS-CoV-2 IgG Reagent Pack	619 9919	<b>23-610-519</b>
VITROS Anti-SARS-CoV-2 IgG Calibrator	619 9920	<b>23-610-520</b>
VITROS Anti-SARS-CoV-2 IgG Controls	619 9921	<b>23-610-521</b>

### Ortho VITROS Anti-SARS-CoV-2 Total Antibody Test

Product Name	Mfr. No.	Cat. No.
VITROS Anti-SARS-CoV-2 Total Reagent Pack	619 9922	<b>23-610-516</b>
VITROS Anti-SARS-CoV-2 Total Calibrator	619 9923	<b>23-610-517</b>
VITROS Anti-SARS-CoV-2 Total Controls	619 9924	<b>23-610-518</b>

## Quidel Sofia SARS Antigen Fluorescent Immunoassay (FIA)

Please contact your Fisher Healthcare account manager to order this product.

The Quidel™ Sofia™ SARS Antigen Fluorescent Immunoassay (FIA) uses immunofluorescence-based lateral flow technology to detect nucleocapsid protein from SARS-CoV-2. Produces automated and objective results in 15 minutes and allows testing in near-patient environments. For use with Sofia and Sofia 2 analyzers under FDA Emergency Use Authorization.



Product Name	Quantity	Mfr. No	Cat. No
Sofia SARS Antigen FIA Assay	25 Tests	<b>20374</b>	<b>23-043-151</b>



## Microbiologics Helix Elite Kit

The Microbiologics™ Helix Elite™ Kit includes newly launched COVID-19 controls to help validate and monitor molecular tests. Contains non-infectious synthetic RNA to use as a positive control in molecular COVID-19 testing or full process control for assay development.



Product Name	Mfr. No.	Cat. No.
Helix Elite COVID-19 Synthetic RNA Kit	HE0060S	23-004-149
Helix Elite SARS-CoV-2 Synthetic RNA Pool (N/E/RdRp/S Gene Targets)	HE0061S	23-047-374
Helix Elite SARS-CoV-2 Process Control (Pellet)	R9000	23-047-375
Helix Elite SARS-CoV-2 Process Control (Swab)	R9001	23-047-376

## Roche Diagnostics cobas Liat SARS-CoV-2 Assay and Control Kit

The Roche Diagnostics cobas™ Liat™ nucleic acid test is the first real-time RT-PCR test authorized for point-of-care screening and testing asymptomatic/symptomatic individuals for SARS-CoV-2.



Product Name	Quantity	Mfr. No	Cat. No.
Roche Diagnostics cobas SARS-CoV-2 Assay	20 Tests	09408592190	23-312-207
Roche Diagnostics cobas SARS-CoV-2 Control Kit, Includes 3 Sets of Positive and Negative Control		09408835190	23-312-208

# Microbiologics Helix Elite Inactivated and Synthetic IVD Controls for SARS-CoV-2



Description	Format	Quantity	Mfr. No	Cat. No.
Microbiologics™ Helix Elite™ Inactivated SARS-CoV-2 Whole Virus Kit	Lyophilized Pellets	5/Pack	E0065N	<b>23-047-378</b>
	Lyophilized Swabs	6/Pack	E0066NS	<b>23-047-379</b>
Helix Elite Inactivated Standard SARS-CoV-2 B.1.1.7 Whole Virus (Alpha Variant)	Lyophilized Pellets	5/Pack	HE0071N	<b>23-047-412</b>
	Lyophilized Swabs	6/Pack	HE0072NS	<b>23-047-413</b>
Helix Elite Inactivated Standard SARS-CoV-2 B.1.351 Whole Virus (Beta Variant)	Lyophilized Pellets	5/Pack	HE0073N	<b>23-047-414</b>
	Lyophilized Swabs	6/Pack	HE0074NS	<b>23-047-415</b>
Helix Elite SARS-CoV-2 Process Control	Lyophilized Pellets	5/Pack	R9000	<b>23-047-375</b>
	Lyophilized Swabs	6/Pack	R9001	<b>23-047-376</b>
Helix Elite Flu/RSV/SARS-CoV-2 Control Panel (Inactivated Swab), 6 Positive, 6 Negative	Lyophilized Swabs	12/Pack	8246	<b>23-047-383</b>
Helix Elite SARS-CoV-2 Process Control Pellet	Lyophilized Pellets	100 Rxns	HE0062S	<b>23-047-380</b>
Helix Elite SARS-CoV-2 Synthetic RNA (N Gene Targets)	Lyophilized Pellet	100 Rxns	HE0060S	<b>23-004-149</b>
Helix Elite SARS-CoV-2 Synthetic RNA Pool (N/E/RdRp/S Gene Targets)	Lyophilized Pellet	100 Rxns	HE0061S	<b>23-047-374</b>

## Cliniqa Liquid QC CoV-2 IgG Control

Cliniqa™ Liquid QC™ CoV-2 IgG Control is an unassayed quality control material for SARS-CoV-2 IgG assays that is liquid, stable, ready to use, and bi-level. Use the control with assays designed to detect COVID-19 IgG antibodies to the SARS-CoV-2 spike (S) protein to simulate negative and positive human patient samples.



Description	Format	Quantity	Mfr. No	Cat. No.
Cliniqa Liquid QC Cov-2 IgG Control, 2 Levels, Use with Antibody Assays from Ortho Vitros™, Beckman Coulter Access™, Siemens Dimension™, Biomerieux™ Vidas™	Liquid	2 x 3 x 3 mL	<b>91494</b>	<b>22-100-115</b>

## Chembio SCoV-2 Ag Detect Rapid Test Kit

Use the Chembio SCoV-2 Ag Detect™ Rapid Test Kit to test symptomatic or asymptomatic patients with a direct nasal sample and get results in about 20 minutes. Qualitatively detects SARS-CoV-2 nucleoprotein antigen.



Description	Quantity	Mfr. No	Cat. No.
Chembio SCoV-2 Ag Detect Rapid Test Kit	20 Tests	9120218	<b>23-999-117</b>
	50 Tests	9020218	<b>23-999-116</b>

## LumiraDx SARS-CoV-2 Ag Test Kit

A microfluidic immunofluorescence assay that directly and qualitatively detects nucleocapsid proteins (antigens) in nasal and nasopharyngeal swab specimens. Appropriate for testing asymptomatic or symptomatic individuals (within the first 12 days of symptom onset). Designed to be used with the LumiraDx analyzer, results are available in 12 minutes. CLIA waived; FDA Emergency Use Authorization.



Product Name	CLIA Complexity	Quantity	Mfr. No.	Cat. No.
LumiraDx SARS-CoV-2 Ag Test Kit	Waived	48 Tests	L016000109048	<b>22-181-001</b>
LumiraDx SARS-CoV-2 Liquid Control Kit, Positive and Negative Controls		2 mL	L016080109002	<b>22-181-002</b>

## Quidel QuickVue SARS Antigen Test Kit

Use Quidel™ QuickVue™ SARS Antigen Tests to detect SARS-CoV-2 antigens directly from swab specimens collected from the anterior nares. Accurate and reliable results in 10 minutes. CLIA waived; FDA Emergency Use Authorization.



Product Name	CLIA Complexity	Quantity	Mfr. No.	Cat. No.
QuickVue SARS Antigen Test Kit	Waived	25 Tests	20387	<b>23-044-167</b>

## OraSure Technologies IntelliSwab COVID-19 Rapid Test Kit

The OraSure Technologies IntelliSwab™ COVID-19 Rapid Test Kit is a unique all-in-one test device and nasal swab that detects nucleocapsid protein antigen from SARS-CoV-2 in 30 minutes. CLIA waived; FDA Emergency Use Authorization.



Product Name	CLIA Complexity	Quantity	Mfr. No.	Cat. No.
IntelliSwab COVID-19 Rapid Test Pro Kit	Waived	25 Tests	10010614	<b>23-222-113</b>
IntelliSwab COVID-19 Rapid Test Rx Kit Prescription Home Use	Waived	24 Tests	10010620	<b>23-222-116</b>
IntelliSwab COVID-19 Rapid Test OTC Kit Home Use	Waived	48 Tests	10010622	<b>23-222-117</b>

## Abbott BinaxNOW COVID-19 Ag Cards

Abbott BinaxNOW™ COVID-19 Ag Cards are easy-to-use rapid antigen tests that detect active COVID-19 infections from nasal swabs in 15 minutes. CLIA waived; FDA Emergency Use Authorization.



Product Name	CLIA Complexity	Quantity	Mfr. No.	Cat. No.
Abbott BinaxNOW COVID-19 Ag Cards	Waived	40 Tests	195000	<b>BNX195000</b>

## Quidel Lyra SARS-CoV-2 Molecular Assay Kit

The Quidel™ Lyra™ SARS-CoV-2 Molecular Assay Kit qualitatively detects SARS-CoV-2 from viral RNA extracted from nasal, nasopharyngeal, or oropharyngeal swabs collected from symptomatic individuals. The assay targets non-structural polyprotein (pp1ab) of SARS-CoV-2 virus. See results in about 75 minutes after extraction. CLIA high complexity. FDA Emergency Use Authorization.



Product Name	CLIA Complexity	Quantity	Mfr. No.	Cat. No.
Lyra SARS-CoV-2 Molecular Assay Kit*	High	96 Tests	M120	23-044-011

\*May be analyzed with bioMérieux, Applied Biosystems™, Roche, Bio-Rad, or Qiagen™ systems

## Thermo Fisher Scientific Accula SARS-CoV-2 Test Kit

The Thermo Fisher Scientific™ Accula™ SARS-CoV-2 Test Kit combines RT-PCR accuracy with a portable platform and simple workflow for results in ~30 minutes. Quickly and reliably identifies COVID-19 positive patients. Requires an Accula Dock. CLIA waived. FDA Emergency Use Authorization.



Product Name	CLIA Complexity	Quantity	Mfr. No.	Cat. No.
Thermo Fisher Scientific Accula SARS-CoV-2 Test Kit	Waived	25 Tests	COV4100	COV4100
Thermo Fisher Scientific Accula Dock	NA	NA	D2000	D2000

# COVID-19 Surveillance

## Thermo Scientific AerosolSense Sampler

Thermo Scientific™ AerosolSense™ Sampler is a pathogen surveillance system that delivers timely and reliable information about airborne pathogens. Validated specifically for SARS-CoV-2, Flu A/B, and RSV-B viruses, it can capture a wide variety of pathogens in the ambient air. After sample collection, the cartridges are sent to a lab for testing.\*



Product Name	Quantity	Cat. No.
AerosolSense Sampler	Each	2900AA
AerosolSense Cartridges**	30/Pack	12-148-001

\*Two testing options: Test using your onsite laboratory or use the Thermo Fisher Scientific testing service.

\*\*Use only with the AerosolSense Sampler



# COVID-19 Assay Comparison

Product Name	Test Type	Detects	CLIA Complexity	Sample Type	Required Instrument	Mfr. No.	Cat. No.
<b>Antibody Tests</b>							
Ortho Clinical Diagnostics™ VITROS™ Anti-SARS-CoV-2 IgG Test	IgG Abs	Antibody	Moderate	Serum	VITROS Analyzers XT7600, 5600, 3600, or ECiQ	6199919	<b>23-610-519</b>
Ortho Clinical Diagnostics VITROS Anti-SARS-CoV-2 Total Reagent	IgG Abs	Antibody	Moderate	Serum or Plasma (EDTA)	VITROS Analyzers XT7600, 5600, 3600, or ECiQ	199922	<b>23-610-516</b>
<b>Antigen Tests</b>							
BD Veritor™ System for Rapid Detection of SARS-CoV-2	Viral Nucleo-capsid Proteins	Viral Protein	Moderate**	Nasal Swabs	Veritor Plus Instrument	256082	<b>B256082</b>
Quidel™ Sofia™ SARS Antigen FIA	Viral Nucleo-capsid Proteins	Viral Protein	Moderate**	Nasal or Nasopharyngeal Swabs	Sofia or Sofia 2 Instruments	20374	<b>23-043-151</b>
LumiraDx SARS-CoV-2 Ag Test Kit	Viral Nucleo-capsid Proteins	Viral Protein	Waived	Nasal Swabs	LumiraDx Analyzer	L016000109048	<b>22-181-001</b>
Quidel™ QuickVue™ SARS Antigen Test Kit	Viral Nucleo-capsid Proteins	Viral Protein	Waived	Nasal Swabs	None	20387	<b>23-044-167</b>
OraSure Technologies IntelliSwab™ COVID-19 Rapid Test Pro Kit	Viral Nucleo-capsid Proteins	Viral Protein	Waived	Nasal Swabs	None	10010614	<b>23-222-113</b>
Abbott BinaxNOW™ COVID-19 Ag Card	Viral Nucleo-capsid Proteins	Viral Protein	Waived	Nasal Swabs	None	195000	<b>BNX195000</b>
<b>Molecular Tests</b>							
Quidel™ Lyra™ SARS-CoV-2 Molecular Assay Kit	Viral RNA	Nucleic Acids	High	Nasal, Nasopharyngeal, or Oropharyngeal Swabs	Lyra, bioMérieux, Bio-Rad, Applied Biosystems™, Roche, and Qiagen™ Analyzers	M120	<b>23-044-011</b>
Thermo Fisher Scientific Accula™ SARS-CoV-2 Test Kit	Viral Nucleic Acids	Nucleic Acids	Waived	Nasal Swabs	Accula Dock	COV4100	<b>COV4100</b>



# Over-the-Counter (OTC) COVID-19 Tests

View SARS-CoV-2 test kit varieties designed for easy home use to provide rapid, reliable results.

## Abbott BinaxNOW COVID-19 AG Card Home Test

The Abbott BinaxNOW™ COVID-19 AG Card Home Test enables rapid antigen testing in a convenient home setting. For use under FDA Emergency Use Authorization.



Product Name	Usage	Quantity	Mfr. No.	Cat. No.
BinaxNOW COVID-19 AG Card Home Test	For Home Use without a Prescription	24 Tests	195264	<b>BNX195264</b>

## Lucira Check It COVID-19 Test Kits

The Lucira Check It COVID-19 Test Kit provides PCR-quality accuracy in 30 minutes or less and is the first and only FDA authorized single-use rapid molecular test available over the counter. Authorized for children ages 2 to 13 (adult administered) and for self-use for persons aged 14 and older.



Product Name	Usage	Quantity	Mfr. No.	Cat. No.
Lucira Check It COVID-19 Test Kit	For Home Use without a Prescription	Each	LUC2000	<b>22-456-001</b>
	For Professional Use	24/Case	LUC1000	<b>22-456-000</b>

## Quidel QuickVue At-Home OTC COVID-19 Test

The Quidel™ QuickVue™ At-Home OTC COVID-19 Test is a lateral flow assay is intended to qualitatively detect nucleocapsid protein antigen from SARS-CoV-2. This test is authorized for non-prescription home use with self- or adult-collected nasal specimens from individuals at least two years old.



Product Name	Quantity	Mfr. No.	Cat. No.
Quidel QuickVue At-Home OTC COVID-19 Test	2 Tests	20402	<b>23-044-171</b>
	25 Tests	20398	<b>23-044-172</b>

# Siemens Healthineers CLINITEST Rapid COVID-19 Antigen Self-Test

The Siemens Healthineers CLINITEST™ Rapid COVID-19 Antigen Self-Test was designed for unsupervised self-testing in people 14 years of age and older and for adult-collected samples from people 2-13 years of age. The product has a sensitivity of 86.5% (95% CI: 79.6 to 91.3%) and a specificity of 99.3% (95% CI: 95.9 to 100.0%) compared to the nucleic acid (PCR) detection method.



Product Name	Quantity	Mfr. No.	Cat. No.
CLINITEST Rapid COVID-19 Antigen Self-Test	Pack of 5 or Case of 170 Packs	11556711	23-312-022





# Combo Kit Testing

Test for more than one illness with convenient combination test kits from top brands that deliver quick results at the point of care.

## Roche Diagnostics cobas Liat Influenza A/B + RSV Assay

The Roche Diagnostics cobas Liat™ Influenza A/B + RSV Assay is a CLIA-waived, automated multiplex test that uses RT-PCR technology to detect and discriminate between influenza A and B virus and RSV RNA in nasopharyngeal swab specimens with results in 20 minutes. Kit includes assay tubes and transfer pipettes. Requires Roche cobas Liat Analyzer



Product Name	CLIA Complexity	Quantity	Mfr. No.	Cat. No.
cobas Liat Influenza A/B + RSV Assay*	Waived	20 Tests	08160104190	<b>23-312-200</b>
Roche Diagnostics cobas™ Liat Control Kit for Influenza A/B + RSV Assay, 3 Positive Controls and UTM Diluent (Used as Negative Control)		Kit	07402686190	<b>23-312-203</b>

## Roche Diagnostics cobas SARS-CoV-2 & Influenza A/B Assay

The Roche Diagnostics cobas SARS-CoV-2 & Influenza A/B Assay is a nucleic acid test for use on the cobas Liat System. The multiplex, real-time PCR test detects and differentiates SARS-CoV-2, Influenza A, and Influenza B.



Product Name	CLIA Complexity	Quantity	Mfr. No.	Cat. No.
cobas SARS-CoV-2 & Influenza A/B Assay	Waived	20 Tests	09211101190	<b>23-312-205</b>
cobas SARS-CoV-2 & Influenza A/B Control Kit	NA	3 Sets	09211128190	<b>23-312-206</b>

## Quidel Sofia 2 Flu+SARS Antigen FIA Kit

The Quidel™ Sofia™ 2 Flu+SARS Antigen FIA Kit is an immunofluorescence-based lateral flow test for the qualitative detection of nucleocapsid proteins from influenza A and B and SARS-CoV-2. Use with a Sofia 2 analyzer for point-of-care testing. CLIA waived. FDA Emergency Use Authorization.



Product Name	CLIA Complexity	Quantity	Mfr. No.	Cat. No.
Quidel Sofia 2 Flu+SARS Antigen FIA Kit*	Waived	25 Tests	20377	<b>23-044-155</b>

\* Requires Quidel Sofia Analyzer

\*\* Requires BD Veritor™ Reader



# BD Veritor System for Rapid Detection of SARS-CoV-2 & Flu A+B Kit



Using the BD Veritor™ Plus Analyzer, detect and differentiate between SARS-CoV-2, influenza A, and influenza B from a single sample. Results in 15 minutes. CLIA waived. For use under FDA Emergency Use Authorization.

Product Name	CLIA Complexity	Quantity	Mfr. No.	Cat. No.
BD Veritor System for Rapid Detection of SARS-CoV-2 & Flu A+B Kit**	Waived	30 Tests	256088	<b>B256088</b>

\* Requires Quidel Sofia Analyzer  
\*\* Requires BD Veritor Reader

# Microbiologics Inactivated Influenza A/B and Respiratory Syncytial Virus

The Microbiologics™ Helix Elite™ Inactivated Influenza A/B and Respiratory Syncytial Virus uses Helix Elite unassayed molecular standards to evaluate and monitor the performance of your tests for influenza A/B and respiratory syncytial virus (RSV). Lyophilized pellets contain Influenza A (H1N1) Virus, Influenza B Virus, Strain Hong Kong/5/72, RSV A, Strain Long and can be reconstituted in buffer or transport medium. FDA listed and CE Marked as an In-Vitro Diagnostic (IVD) Medical Device.



Product Name	Quantity	Mfr. No.	Cat. No.
Microbiologics Helix Elite Inactivated Influenza A/B and Respiratory Syncytial Virus, Unassayed, Influenza A (H1N1) Virus, Influenza B Virus, Strain Hong Kong/5/72, Respiratory Syncytial Virus (RSV) A, Strain Long, For Molecular Testing	5 Lyophilized Pellets	HE0044N	23-047-302



# Controls for Research Use Only (RUO)

Explore a variety of controls from brands you trust to help you monitor and evaluate your research.

## ZeptoMetrix NATtrol Controls for Respiratory Virus Nucleic Acids

### For Research Use Only

ZeptoMetrix™ NATtrol™ Controls for Respiratory Virus Nucleic Acids are designed for use in evaluating and monitoring the performance of nucleic acid tests for determination of the presence of respiratory virus nucleic acids.



Product Name	Quantity	Mfr. No.	Cat. No.
NATtrol Influenza A/B Positive Control for Nucleic Acids Tests	6 x 0.5 mL	NATFLUAB6C	<b>22-158-026</b>
NATtrol Influenza External Run Controls Determination of Presence of Respiratory Virus Nucleic Acid (Coxsackie Virus A9)	6 x 0.5 mL	NATCXVA96MC	<b>22-156-723</b>
NATtrol Influenza External Run Controls for Respiratory Virus Nucleic Acid (Influenza A/NewCaledonia/20/99, Influenza B/Florida/02/07)	6 x 0.5 mL	NATFLUA/B6MC	<b>22-156-730</b>
NATtrol Influenza External Run Controls for Respiratory Virus Nucleic Acid (Influenza A/NY/02/09)	6 x 0.5 mL	NATFLUAH1N16MC	<b>22-156-733</b>
NATtrol Influenza/RSV Negative Control	6 x 0.5 mL	NATCXVA96C	<b>22-158-025</b>

## ZeptoMetrix NATtrol Strep A External Run Controls

### For Research Use Only

ZeptoMetrix™ NATtrol™ Strep A External Run Controls and verification panels can be used with a variety of molecular platforms. NATtrol Strep A Positive Controls include specific strains of *Streptococcus*.

Product Name	Quantity	Mfr. No.	Cat. No.
Strep A Positive Control, Includes <i>Streptococcus pyogenes</i> Strain Z018	6 x 0.5mL	NATSPY-6MC	<b>22-158-243</b>
Strep A Negative Control, Includes <i>Streptococcus dysgalactiae</i> Strain Z068	6 x 0.5mL	NATSDG6MC	<b>22-158-242</b>

## Thermo Scientific AcroMetrix COVID-19 RNA Controls

### For Research Use Only

Thermo Scientific™ AcroMetrix™ COVID-19 RNA Controls are multiplex synthetic, dual-concentration RNA transcript controls to validate and monitor the performance of molecular tests for detecting COVID-19 using Bio-Rad™ Droplet Digital™ PCR (ddPCR™) technology.



Product Name	Quantity	Mfr. No.	Cat. No.
AcroMetrix COVID-19 Low Positive and Ultra-Low Positive Controls	2 x 20 µL	954519	10-095-4519
AcroMetrix COVID-19 Full Process Control	5 x 1.5 mL	954517	10-095-4517

## ZeptoMetrix NATtrol SARS-CoV-2 External Run Controls

### For Research Use Only

ZeptoMetrix™ NATtrol™ SARS-CoV-2 External Run Controls are reliable and easy-to-use non-infectious positive and negative controls for SARS-CoV-2 test development, validation, and ongoing quality control.



Description	Quantity	Mfr. No.	Cat. No.
NATtrol SARS-CoV-2 External Run Control, Non-Infectious, Intact Viral Particles for Quality Control	6 x 0.5 mL	NATSARS(COV2)-ERC	22-158-370
NATtrol SARS-CoV-2 Negative Control Non-Infectious, Intact Viral Particles for Quality Control	6 x 0.5 mL	NATSARS(COV2)-NEG	22-158-372
NATtrol SARS-CoV-2 Stock, Non-Infectious, Intact Viral Particles	1.0 mL	NATSARS(COV2)-ST	22-158-371
SARS-CoV-2 Viral Culture Fluid, Isolate: USA-WA1/2020, Heat Inactivated	0.5 mL	0810587CFHI-0.5mL	22-158-364
	1.0 mL	0810587CFHI	22-158-369
NATtrol SARS-CoV-2 (Recombinant) Stock, Inactivated Intact Bacterial Cells with Synthetic SARS-CoV-2 Sequence; for Evaluating Nucleic Acid Tests for the SARS-CoV-2 N Gene	1 x 1.0 mL	831042	22-158-340
NATtrol SARS-CoV-2 (E/ORF1ab Recombinant) Stock, Inactivated Intact Bacterial Cells with Synthetic SARS-CoV-2 Sequence; for Evaluating Nucleic Acid Tests for the SARS-CoV-2 N Gene or ORF1ab Gene Regions	1 x 1.0 mL	831043	22-158-342



# Specimen Collection Products

Find multiple product options to help you optimize the collection, transportation, and storage of your valuable specimens.



## Assay-Specific Swabs

Product Description	Quantity	Mfr. No.	Cat. No.
Sekisui Diagnostics Swabs for Rapid Microbial Testing	1,014/Case	7628	<b>22-071-077</b>
Quidel™ QuickVue™ Throat Swabs for Strep A Testing	50/Pack	20227	<b>23-038-171</b>
Abbott BinaxNOW™ Nasopharyngeal Swab Accessory Packs, Include Foam Swabs, Elution Reagent, and Transport Vials	20/Pack	400065	<b>BNX400065</b>

## Specimen Collection, Single Dry Swabs

Brand	Tip Style	Swab Material	Shaft Material	Packaging	Quantity	Mfr. No.	Cat. No.
<b>Flocked Nylon Swab</b>							
BD	Mini, Flexible	Flocked Nylon	Plastic	Peel Pouch	100/Pack	220252	<b>22-349-822</b>
BD	Mini, Inflexible	Flocked Nylon	Plastic	Peel Pouch	100/Pack	220251	<b>22-349-821</b>
BD	Regular	Flocked Nylon	Plastic	Peel Pouch	100/Pack	220250	<b>22-349-820</b>
Copan	Ultra Mini	Flocked Nylon	Plastic	Peel Pouch	100/Pack	516CS01	<b>23-600-955</b>
Copan	Mini, 80 mm	Flocked Nylon	Plastic	Peel Pouch	100/Pack	501CS01	<b>23-600-950</b>
	Mini, 100 mm	Flocked Nylon	Plastic	Peel Pouch	100/Pack	518CS01	<b>23-600-956</b>
Copan	Mini, Flexible	Flocked Nylon	Plastic	Peel Pouch	100/Pack	503CS01	<b>23-600-952</b>
Copan	Regular, 80 mm	Flocked Nylon	Plastic	Peel Pouch	100/Pack	502CS01	<b>23-600-951</b>
	Regular, 100 mm	Flocked Nylon	Plastic	Peel Pouch	100/Pack	519CS01	<b>23-600-957</b>
Copan	Contoured Pediatric, 50 mm	Flocked Nylon	Plastic	Peel Pouch	100/Pack	56750CS01	<b>23-600-967</b>
	Contoured Pediatric, 80 mm	Flocked Nylon	Plastic	Peel Pouch	100/Pack	56780CS01	<b>23-600-968</b>
Copan	Contoured Adult	Flocked Nylon	Plastic	Peel Pouch	100/Pack	56380CS01	<b>23-600-966</b>
Copan	Mini, 80 mm	Flocked Nylon	Plastic	Dry Tube	100/Pack	551C	<b>23-600-959</b>
	Mini, 100 mm	Flocked Nylon	Plastic	Dry Tube	100/Pack	518C	<b>23-600-963</b>
Copan	Flexible Mini	Flocked Nylon	Plastic	Dry Tube	100/Pack	553C	<b>23-600-961</b>
Copan	Pediatric	Flocked Nylon	Plastic	Dry Tube	100/Pack	516C	<b>23-600-962</b>
Copan	Regular, 80 mm	Flocked Nylon	Plastic	Dry Tube	100/Pack	552C	<b>23-600-960</b>
	Regular, 100 mm	Flocked Nylon	Plastic	Dry Tube	100/Pack	519C	<b>23-600-964</b>
Hardy Diagnostics	Mini, Flexible	Flocked Nylon	Plastic	Peel Pouch	100/Pack	972012	<b>23-001-731</b>
MedSchenker	Regular, Flexible	Flocked Nylon	Nylon	Peel Pouch	2,000 Case	AC1100	<b>23-000-006</b>

## Specimen Collection, Single Dry Swabs

Brand	Tip Style	Swab Material	Shaft Material	Packaging	Quantity	Mfr. No.	Cat. No.
Foam Swab							
Copan	Mini	Foam	Plastic	Peel Pouch	1,000/Case	1C061S01	<b>23-600-984</b>
Copan	Regular	Foam	Plastic	Peel Pouch	1,000/Case	1C055S01	<b>23-600-986</b>
Foamtec	Regular, Snappable Handle	Foam	Plastic	Peel Pouch	1,000/Case	MP1301AST	<b>19-304-884</b>
Foamtec	Regular, Snappable Handle	Foam	Plastic	Peel Pouch	1,000/Case	MP1302ST	<b>19-304-8854</b>
Polyester Swab							
Puritan	Mini	Flocked Polyester	Plastic, Elongated	Peel Pouch	500/Case	253316U	<b>22-025-193</b>
BD	Regular	Polyester	Plastic	Peel Pouch	100/Pack	164KS01	<b>22-349-823</b>
Copan	Regular	Polyester	Plastic	Peel Pouch	100/Pack	164KS01	<b>14-906-41</b>
Copan	Regular	Polyester	Plastic	Dry Tube, Labeled	100/Pack	159C	<b>14-906-19</b>
Copan	Regular, 100 mm	Polyester	Plastic	Peel Pouch	1,000/Case	1U054S01	<b>23-600-983</b>
Fisherbrand	Regular	Polyester	Plastic	Peel Pouch	100/Pack	NA	<b>22-363-170</b>
Fisherbrand	Regular	Polyester	Plastic	Peel Pouch	200/Pack	NA	<b>22-363-164</b>
Rayon Swab							
BD	Regular	Rayon	Plastic	Peel Pouch	100/Pack	167KS01	<b>22-349-826</b>
Fisherbrand	Regular	Rayon	Plastic	Dry Tube	100/Pack	NA	<b>14-907-10</b>

# Specimen Collection Products

## Bacteriology Specimen Collection Kits and Swabs

Product Description	Media	No. Swabs	Tip Style	Swab Material	Shaft Material	Quantity	Mfr. No.	Cat. No.
BD ESwab™ Collection Kits	Liquid Amies (1 mL)	1	Flexible Mini	Flocked Nylon	Plastic	50/Pack	220532	<b>B220532</b>
	Liquid Amies (1 mL)	1	Regular	Flocked Nylon	Plastic	50/Pack	220245	<b>22-349-700</b>
	Liquid Amies (1 mL)	1	Mini	Flocked Nylon	Plastic	50/Pack	220246	<b>22-349-701</b>
BD BBL™ CultureSwab™ Collection Kits	Liquid Amies (1 mL)	1	Regular	Polyester	Plastic	50/Pack	220146	<b>14-959-705</b>
	Amies Gel (1 mL)	1	Regular	Rayon	Plastic	50/Pack	220116	<b>L4320116</b>
	Liquid Stuart (1 mL)	1	Mini	Flocked Rayon	Regular Aluminum Wire	50/Pack	220132	<b>B4320132</b>
	Liquid Stuart (1 mL)	1	Mini	Flocked Rayon	Soft Aluminum Wire	50/Pack	220133	<b>B4320133</b>
	Liquid Stuart (1 mL)	1	Mini	Flocked Rayon	Flexible Aluminum Wire	50/Pack	220134	<b>B4320134</b>
BD BBL CultureSwab Plus Collection Kits	Amies Gel with Charcoal (1 mL)	1	Regular	Rayon	Plastic	50/Pack	220121	<b>L4320121</b>
	Amies Gel; No Charcoal (1 mL)	1	Regular	Rayon	Plastic	50/Pack	220116	<b>L4320126</b>
	Amies Gel; No Charcoal (1 mL)	2	Regular	Rayon	Plastic	50/Pack	220117	<b>L4320117</b>
Copan Diagnostics ESwab™ Collection and Transport Swabs	Liquid Amies (1 mL)	1	Regular	Flocked Nylon	Plastic	50/Pack	480C	<b>23-600-900</b>
	Liquid Amies (1 mL)	1	Mini	Flocked Nylon	Plastic	50/Pack	481C	<b>23-600-901</b>
	Liquid Amies (1 mL)	1	Flexible Mini	Flocked Nylon	Plastic	50/Pack	482C	<b>23-600-902</b>
	Liquid Amies (1 mL)	1	Regular	Flocked Nylon	Plastic	50/Pack	480CFA	<b>23-600-905</b>
	Liquid Amies (1 mL)	2	Regular	Rayon, Flocked Nylon	Plastic	50/Pack	486C	<b>23-600-906</b>
Fisherbrand™ Bacteriology Swabs	Liquid Stuart	2	Regular	Rayon	Plastic	50/Pack	N/A	<b>14-907-21</b>
Starplex™ Scientific Starswab II Swabs	Liquid Amies	1	Regular	Rayon	Plastic	50/Pack	SP130X	<b>14-905-67</b>
	Liquid Amies	2	Regular	Rayon	Plastic	50/Pack	SP130D	<b>14-905-80</b>

## Viral Specimen Collection Kits and Swabs

Product Description	Media	Tip Style	Swab Material	Shaft Material	Quantity	Mfr. No.	Cat. No.
BD Universal Viral Transport Collection Kits	UVT (3 mL)	Mini	Flocked Nylon	Plastic	50/Pack	220529	<b>B220529</b>
	UVT (1 mL)	Flexible Mini	Flocked Nylon	Plastic	50/Pack	220526	<b>B220526</b>
	UVT (1 mL)	Flexible Mini	Flocked Nylon	Plastic	50/Pack	220531	<b>B220531</b>
LabAid Universal Viral Collection Kit, 10 mL Tube	UVT (3 mL)	Flexible Mini	Flocked Nylon	Plastic	1,000/Case	BVTK-010	<b>22-363-009</b>

## Molecular Specimen Collection Swabs

Product Description	Media	Tip Style	Swab Material	Shaft Material	Quantity	Mfr. No.	Cat. No.
Copan Diagnostics Swabs in eNat, Skirted Tube with Cap	eNat™ (2 mL)	Regular	Flocked Nylon	Plastic	50/Pack	6U073S01	<b>23-600-987</b>
		Mini			50/Pack	6U074S01	<b>23-600-988</b>
Copan Diagnostics Swabs in UTM, Skirted Tube with Cap	UTM-RT™ (3 mL)	Flexible Mini	Flocked Nylon	Plastic	50/Pack	3C057N	<b>23-600-989</b>
		Regular			50/Pack	3C064N	<b>23-600-990</b>
		1 Regular			50/Pack	3C061N	<b>23-600-991</b>
		1 Flexible Mini					

## Viral Transport Media

Product Description	Quantity	Mfr. No.	Cat. No.
BD Universal Viral Transport Vials, 3 mL Universal Transport Medium	50/Pack	220220	<b>22-031-14</b>
BD Universal Viral Transport Vials, 1 mL Universal Transport Medium	50/Pack	220244	<b>22-349-981</b>
Bartels™ FlexTrans™ Transport Medium, 2 mL in 15 mL Conical Tube with Glass Beads	50/Pack	B1029-90D	<b>22-140-360</b>
Copan Diagnostics Universal Transport Medium (UTM-RT) in 16 x 100 mm Screw-Cap Tube, 3 mL	300/Case	3C047N	<b>23-600-982</b>
Hardy Diagnostics™ Viral Transport Medium, 3 mL	20/Pack	R99	<b>23-001-726</b>
PrimeStore MTM Molecular Transport Media, 2 mL in Cryotubes	50/Pack	LH-1-02	<b>23-100-400</b>
PrimeStore MTM Molecular Transport Media, 3 mL in Cryotubes	50/Pack	LH-1-03	<b>23-100-401</b>
PrimeStore MTM Molecular Transport Media, 5 mL in Cryotubes	50/Pack	LH-1-05	<b>23-100-402</b>
Thermo Scientific™ MicroTest™ Tubes, Short Skirted Conical Tube, Purple Cap, No Swab, 3 mL	72/Pack	R12587	<b>R12587</b>
Thermo Scientific™ MicroTest™ Tubes, Large Conical Tube, Blue Cap, No Swab, No Beads, 3 mL	72/Pack	R12591	<b>R12591</b>



# Cold Storage Equipment

Proper storage of samples, vaccines, drugs, and other perishables is essential for preventing spoilage and contamination. Browse a wide selection of refrigerators and freezers and monitoring equipment for controlling temperature in your clinical lab.

Description	Capacity	Door Style	Temperature Range	Cat. No.
Undercounter Refrigerators				
Fisherbrand™ Isotemp™ Undercounter Refrigerator	5.5 cu. ft. (156 L)	Solid	2°C to 9°C	FBG505SA
		Glass	2°C to 9°C	FBG505GA
Thermo Scientific™ TSG Series General Purpose Undercounter Refrigerators	5.5 cu. ft. (156 L)	Solid	2°C to 9°C	TSG505SA
		Glass	2°C to 9°C	TSG505GA
Undercounter Pharmacy Refrigerators				
Thermo Scientific TSX Series High-Performance Undercounter Refrigerator	5.5 cu. ft. (156 L)	Solid	3°C to 7°C	TSX505SA
		Glass	3°C to 7°C	TSX505GA
Upright Refrigerators				
Fisherbrand Refrigerator	23 cu. ft. (651 L)	Glass	2°C to 10°C	FBG25RPGA
Thermo Scientific TSG Series General Purpose Refrigerator	23 cu. ft. (651 L)	Glass	2°C to 10°C	TSG25RPGA
Thermo Scientific TSX Series High-Performance Refrigerator	23 cu. ft. (650 L)	Solid	3°C to 7°C	TSX2305SA
		Glass	3°C to 7°C	TSX2305GA
Upright Pharmacy Refrigerators				
Thermo Scientific™ TSX Series Pharmacy Refrigerator	23 cu. ft. (650 L)	Glass	3°C to 7°C	TSX2305PA
Combination Refrigerators and Freezers				
B Medical Systems™ Precision Combo Pharmacy Refrigerator-Freezer	R: 4.2 cu. ft. (119 L)	R: Glass Window	R: +4°C to +15°C	BMSPF260
	F: 4.2 cu. ft. (119 L)	F: Solid	F: –32°C to –20°C	
B Medical Systems Precision Combo Laboratory Refrigerator-Freezer	R: 4.2 cu. ft. (119 L) F: 4.2 cu. ft. (119 L)	R: Glass Window F: Solid	R: 5°C F: –32°C	BMSLF260
Undercounter Pharmacy Freezers				
B Medical Systems Precision Pharmacy Freezer	4.2 cu. ft. (119 L)	Solid	–32°C to –20°C	BMSF130



# Cold Storage Equipment

Description	Capacity	Door Style	Temperature Range	Cat. No.
<b>Upright Freezers</b>				
Fisherbrand™ Isotemp™ General Purpose Laboratory Freezer	25 cu. ft. (700 L)	Solid	–12°C to –30°C	FBG25FSSA
Thermo Scientific™ Adaptive Defrost Freezer	25 cu. ft. (700 L)	Solid	–12°C to –30°C	TSG25FSSA
<b>Upright Pharmacy Freezers</b>				
Thermo Scientific TSX Series High-Performance Manual Defrost –20°C Freezer*	23 cu. ft. (650 L)	Solid	–25°C to –15°C	TSX2320FA
Thermo Scientific TSX Series High-Performance –30°C Auto Defrost Freezer*	23 cu. ft. (650 L)	Solid	–35° to –15°C	TSX2330FA

\*Certified to NSF/ANSI 456 Vaccine Storage standard; order with a certificate of calibration

## Temperature Monitoring

Description	Probe Type	Temperature Range.	Cat. No.
Fisherbrand™ Vaccine-Trac™ Bundle**, NIST Traceable	Bottle (Enclosed)	–50°C to +70°C	<b>01-001-963</b>

\*\*Meets all CDC recommendations for VFC (Vaccines for Children) digital data loggers



# Workplace Safety Products

Whether you're working through a public health crisis or maintaining a more typical workflow, it's important to keep everyone in your facility safe. Find the equipment and supplies you need to comply with best practices for:

- Personal protection
- Hand sanitation
- Temperature checks
- Social distancing
- Disinfecting shared areas

## Personal Protective Equipment

Limit virus contact and transfer with fundamental supplies, including basic face and hand protection.

### General-Purpose Facemasks

Disposable face masks are designed for single or limited use for particulate filtration and fluid resistance. Universally sized, facemasks may have ties or soft, elastic ear loops and a 2- or 3-ply construction. They are not airtight, do not require fit testing, and are not intended for medical use.



Product Description	Quantity	Cat. No.
Fisherbrand™ Disposable Face Mask, 3-Ply, Nonsterile, Blue	500/Case	12-888-001A
Medicom™ DisTech™ Earloop Face Mask, Pleated, Nonsterile, Blue	2,000/Case	12-888-30

### Procedure and Surgical Masks

Surgical masks are tested to meet levels of barrier protection as specified in ASTM F2100-19.\* Procedure masks are FDA cleared medical devices for use in healthcare procedures. They are not airtight and do not require fit testing.



Product Description	Quantity	Mfr. No.	Cat. No.
Medicom SafeMask™ FreeFlow Earloop Mask, Level 3, Lavender	500/Case	200511	19-910-716
Medicom SafeMask FreeFlow Earloop Mask, Level 3, White	500/Case	200514	19-910-717
Medicom SafeMask FreeFlow Earloop Mask, Level 3, Blue	500/Case	200515	19-910-718
Medicom SafeMask FreeFlow Earloop Mask, Level 3, Pink	500/Case	200516	19-910-719

\*ASTM Levels

- Level 1: Low barrier protection; for non-surgical and low-risk procedures and exams that do not involve aerosols, sprays, or fluids
- Level 2: Moderate barrier protection; for low-to-moderate levels of aerosols, sprays, and fluids
- Level 3: Maximum barrier protection; for situations with potential for heavy aerosols, sprays, and fluid exposure

### Fisherbrand™ Face Shield

Lightweight and comfortable Fisherbrand™ Face Shields provide protection from splashing liquids, blood, and other bodily fluids and can be used in laboratories, medical settings, dentist offices, and veterinary practices.



Product Description	Quantity	Mfr. No.	Cat. No.
Fisherbrand Face Shield, Clear	144/Case		19-181-800C

## N95 Respirators

An N95 mask or respirator filters out at least 95% of airborne particles as defined by the U.S. National Institute for Occupational Safety and Health (NIOSH, 42 CFR Part 84). They are functionally equivalent to FFP2 respirators (European Union) and KN95 respirators (China) with slightly different certification criteria.

In the United States, the Occupational Safety and Health Administration (OSHA) requires that healthcare workers use N95 respirators when working with patients suspected or confirmed to be infected with COVID-19, Ebola, Mycobacterium (tuberculosis), pandemic or avian influenza, or severe acute respiratory syndrome (SARS).

OSHA requires fit testing for N95 respirators to determine the right model, style, and size for the wearer and to verify fit thereafter. Since N95 respirators can make breathing more difficult, wearers must also be medically evaluated for heart conditions, lung disease, and claustrophobia.



Product Description	Quantity	Mfr. No.	Cat. No.
Moldex™ N95 Disposable Particulate Respirators, Medium/Large, White	20/Pack	2200N95	<b>18-999-1449</b>

## Surgical N95 Respirators

Surgical respirators, also called Surgical N95, medical, or healthcare respirators, are N95 masks that meet both FDA and NIOSH requirements for healthcare use. During COVID-19 pandemic shortages, the Families First Coronavirus Response Act changed the liability and certification requirements to allow the use of regular N95 respirators in healthcare settings.

OSHA requires fit testing for N95 respirators to determine the right model, style, and size for the wearer and to verify fit thereafter. Since N95 respirators can make breathing more difficult, wearers must also be medically evaluated for heart conditions, lung disease, and claustrophobia.



Product Description	Quantity	Mfr. No.	Cat. No.
Moldex N95 Healthcare Particulate Respirators/Surgical Masks, Large, Blue	160/Case	1513	<b>19-150-0429</b>

## Powered Air-Purifying Respirators (PAPRs)

A PAPR is an air-purifying respirator. It uses a blower to force air through filter devices and into the wearer's breathing zone. This creates an air flow inside a facepiece, hood, or helmet to provide a higher level of protection than N95 masks. Use a PAPR during healthcare procedures that expose you to aerosolized pathogens from acute respiratory infections.

Product Description	Quantity	Mfr. No.	Cat. No.
Honeywell™ North™ Primair™ PA700 PAPR Kit with Universal Size Bibbed Hood	Each	PA701HED111TF	<b>19-085-543</b>
Honeywell North™ Primair PA700 PAPR Kit with Medium-Sized Loose-Fitting Head Cover and Adjustable Headgear	Each	PA701HED101TF	<b>19-085-544</b>



## Gloves and Industrial Gloves

For product selection and availability, contact your Fisher Healthcare sales representative.



## Safety Signs

Product Description	Material	Dimensions	Color	Quantity	Mfr. No.	Cat. No.
Brady™ Sign: "Caution: Face Mask Required," Surface Mount	Polyester	7 x 10 in.	Yellow and Black	Each	84531	<b>19-036-248</b>
Brady Sign: "Caution: Gloves Required," Surface Mount	Polyester	7 x 10 in.	Yellow and Black	Each	84533	<b>19-102-439</b>



## Biohazardous Waste Disposal

Product Description	Material	Dimensions	Color	Quantity	Mfr. No.	Cat. No.
Justrite™ Biohazard Waste Cans, Foot-Operated Self-Closing Lid, Capacity: 10 gal.	Steel	H x Dia.: 18 x 14 in.	White	Each	05930	<b>19-033-755</b>
Justrite Biohazard Liner Bags for 6 or 10 gal. Waste Containers	Plastic	L x W: 33 x 24 in.	Red, Printed	100/Pack	05901	<b>19-033-712</b>



## Hand Sanitation

Encourage good personal hygiene with easily accessible hand sanitation stations.

Product Description	Active Ingredient	Size	Quantity	Cat. No.
AeroCleanse Hand Sanitizer with Flip Cap	70% ETOH	8 oz.	32/Case	<b>17-215-003</b>
AeroCleanse Hand Sanitizer with Pump Top	70% ETOH	1 gal.	4/Case	<b>17-215-004</b>
AeroCleanse Hand Sanitizer with Pump Top	80% ETOH	1 gal.	4/Case	<b>17-215-006</b>
Lime Media Hand Sanitizing Gel	70% ETOH	1 gal.	Each	<b>19-043-981</b>
Dynamic Diagnostics Feel Welcome Hand Sanitizer	80% ETOH	16 oz.	12/Case	<b>22-899-682</b>
Azer Scientific Hand Sanitizer Gel with Cap	70% ETOH	8 oz.	24/Case	<b>22-026-762</b>
Azer Scientific Hand Sanitizer Gel with Pump	70% ETOH	1 gal.	4/Case	<b>22-026-763</b>
Ricca Chemical Hand Sanitizer	75% IPA	2.6 gal.	Each	<b>R421900010F</b>
Cole-Parmer™ Liquid Hand Sanitizer	80% ETOH	1 gal.	Each	<b>19-855-000</b>
Thermo Scientific™ Hand Sanitizer	75% IPA	500 mL	6/Case	<b>HSANI500ML</b>
		4 L	Each	<b>HSANI4LI</b>
SUPPRESS™ Hand Sanitizer	75% ETOH	16.9 oz.	24/Case	<b>18-510-000</b>
SUPPRESS Hand Sanitizing Wipes, 6 x 8 in.	75% ETOH	150 Count	20/Case	<b>18-510-001</b>
		75 Count	20/Case	<b>18-510-002</b>
IW Tremont LabExact™ 70% IPA Cotton Cloth Wipes, 6 x 6 in.	70% IPA	80/Pack	Each	<b>17-654-100</b>

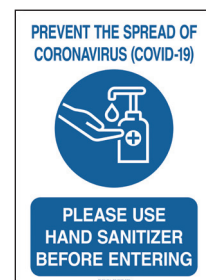
## Hand Sanitizer Dispensers

Product Description	Quantity	Mfr. No.	Cat. No.
Purell™ ES8 Touch-Free Hand Sanitizer Dispenser, White	Each	772001	<b>19-043-809</b>
Purell ES8 Touch-Free Hand Sanitizer Dispenser, Graphite	Each	772401	<b>19-043-812</b>
Purell™ MESSENGER™ ES8 Floor Stand with Dispenser, H: 52.6 in., Silver	Each	7308DSSLV	<b>19-043-926</b>



## Hygiene Signs

Product Description	Material	Dimensions (H x W)	Color	Quantity	Mfr. No.	Cat. No.
Brady™ Sign: "Prevent the Spread of Coronavirus (COVID-19) Please Use Hand Sanitizer Before Entering"	Polystyrene	10 x 7 in.	Blue and White	Each	170168	<b>19-129-417</b>
Brady Sign: "Prevent the Spread of Coronavirus (COVID-19) Please Wash Hands for 20 Seconds"	Polystyrene	10 x 7 in.	Blue and White	Each	170180	<b>19-129-429</b>



## Social Distancing Aids

Provide the visual cues and barriers needed to maintain appropriate distancing in high-traffic, meeting, and other shared spaces.

### Shields and Barriers

Product Description	Material	Dimensions	Quantity	Mfr. No.	Cat. No.
Accuform™ Accu-Shield™ Sneeze Guard (SG) Barrier Panels, With Side Wings, Countertop	Clear Chemical-Resistant Plastic	Main Panel (H x W): 24 x 36 in. Side Wings (2): 19.75 x 10 in.	Each	PRL300	<b>19-169-789</b>
		Main Panel (H x W): 24 x 48 in. Side Wings (2): 19.75 x 10 in.	Each	PRL301	<b>19-169-790</b>
Accuform Accu-Shield SG Barrier Panels, 4-Way Table Divider		H x W: 24 x 36 in.	Each	PRL400	<b>19-169-793</b>
		H x W: 24 x 48 in.	Each	PRL401	<b>19-169-794</b>



### Social Distancing Signs

Product Description	Material	Dimensions (H x W)	Color	Quantity	Mfr. No.	Cat. No.
Brady Floor Sign: "Thank You for Practicing Social Distancing"	Vinyl	14 x 18 in.	Green and White	Each	170213	<b>19-129-463</b>
	Vinyl	14 x 18 in.	White on Orange	Each	170214	<b>19-129-464</b>
Brady Sign: "Notice Social Distancing Maintain About 6 ft. (2m) Distance"	Polystyrene	7 x 10 in.	Blue and White	Each	170207	<b>19-129-457</b>
Brady Sign: "Thank You for Practicing Social Distancing"	Polystyrene	10 x 7 in.	Red and White	Each	170202	<b>19-129-451</b>
Brady Sign: "Prevent the Spread of Coronavirus (COVID-19)"	Polystyrene	10 x 7 in.	Red and White	Each	170162	<b>19-129-411</b>





# Disinfection of Shared Areas

## Traffic Safety Products

Product Description	Material	Dimensions	Color	Quantity	Mfr. No.	Cat. No.
Brady™ Aisle Marking Arrows	Vinyl	L: 3 in.	Yellow	100/Roll	121047	<b>19-103-694</b>
Brady™ Bradylink™ Warning Chains, for Indoor Use Only	Polyethylene	2 in. x 100 ft.	Yellow	Each	78238	<b>19-104-380</b>
Brady™ Bradycone™ Warning Systems Cone	Plastic	H: 35 in.	Orange	Each	77204	<b>19-104-406</b>



# Disinfection of Shared Areas

Effectively sanitize shared areas with essential cleaning tools and supplies.

## Disinfectant Cleaners

Product Description	Size	Quantity	Mfr. No.	Cat. No.
Purell™ Professional Surface Disinfectant, Citrus Scented	32 oz.	6/Case	334206	<b>19-043-816</b>
	128 oz.	Each	434204	<b>19-043-817</b>
Deardorff Fitzsimmons Bleach Solution Dispenser System, Includes Two-Bottle Trigger Sprayer Head and Water Bottle		Each	77005FS	<b>23-640-500</b>
Deardorff Fitzsimmons Bleach Cartridge Refills for Bleach Solution Dispenser System		12/Case	77012FS	<b>23-640-501</b>
Deardorff Fitzsimmons Bleach Solution Dispenser System, Includes Two-Bottle Trigger Sprayer Head, One Water Bottle, and Five Bleach Cartridges		Each	77051FS	<b>23-640-502</b>



## General-Purpose Floor Cleaning Products

Product Description	Material	Quantity	Mfr. No.	Cat. No.
Vileda Professional™ Sentrex™ Cut End Wet Mop, Capacity: 16 oz.	Synthetic Blended Yarn	12/Case	134831	<b>19-200-620</b>
Essendant Rubbermaid™ Invader™ Wet Mop Handles, L: 60 in.	Wood	Each	RCPH116	<b>19-057-563</b>
	Fiberglass	Each	RCPH116	<b>19-057-564</b>
Rubbermaid™ WaveBrake™ Sidepress Bucket with Wringer, Capacity: 35 qt., Yellow	Polypropylene	Each	FG758088YEL	<b>19-076-528</b>
Rubbermaid WaveBrake Mop Bucket and Down Press Wringer, Capacity: 35 qt., Yellow	Polypropylene	Each	FG757788YEL	<b>19-076-529</b>
Freudenberg™ C-Pro Cut End Mops, Capacity: 16 oz.	Cotton	12/Case	134810	<b>19-200-622</b>
Freudenberg C-Pro Cut End Mops, Capacity: 20 oz.	Cotton	12/Case	134814	<b>19-200-623</b>



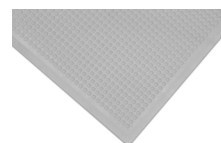
## Squeegees

Product Description	Dimensions	Quantity	Mfr. No.	Cat. No.
Remco™ Vikan™ Foam Blade Squeegee Heads, Large, White	28 x 3.5 in.	Each	77555	<b>17-227-918</b>
Remco Vikan Foam Blade Squeegee, Small, Blue	10 x 3.1 in.	Each	77553	<b>17-227-897</b>



## Contamination Control

Product Description	Dimensions	Quantity	Mfr. No.	Cat. No.
NOTRAX™ Autoclavable Bubble Mat, Gray	L x W: 2 x 3 ft.	Each	448S0023GY	<b>19-086-052</b>



# Temperature Checks, Signage, and Tents

## Temperature Checks

Use temperature checks to monitor potential health issues.

### Digital Thermometers

Product Description	Quantity	Mfr. No.	Cat. No.
Infrared Thermometer, Non-Contact	Each	NA	<b>12-894-005</b>
iHealth Infrared Forehead Thermometer, Non-Contact	Each	PT3	<b>NC1810996</b>



### Safety Awareness Signs

Product Description	Material	Dimensions	Color	Quantity	Mfr. No.	Cat. No.
Brady™ Sign: "Warning Quarantine Area Keep Out"	Polystyrene	10 x 7 in.	Black on Orange	Each	170184	<b>19-129-433</b>
Brady Sign: "Warning Coronavirus (COVID-19) Quarantine Area Keep Out"	Polystyrene	10 x 7 in.	Black on Orange	Each	170190	<b>19-129-439</b>



### Tents (for Screening)

Product Description	Material	Dimensions	Color	Quantity	Mfr. No.	Cat. No.
Ergodyne SHAX™ 6000 Heavy-Duty Commercial Pop-Up Tent	Polyester Shell	14 x 10 x 10 ft.	Lime	Each	12900	<b>19-808-126</b>
Ergodyne SHAX 6051 Heavy-Duty Pop-Up Tent Kit, Includes Tent Sidewall Panels (2), 40 lb. Weight Bags (2), Wheeled Storage Bag, Heavy-Duty Ground Stakes (4), Ropes (4)	Polyester Shell	14 x 10 x 10 ft.	Lime	Each	12951	<b>19-819-700</b>
			Blue	Each	12951	<b>19-819-701</b>





**Work confidently** with the supplies and PPE you need to keep your facility safe and productive. For more information and to review federal guidelines, refer to the following documents and websites.

## Resources

<https://www.cdc.gov/coronavirus/2019-ncov/prevent-getting-sick/about-face-coverings.html>

[https://www.cdc.gov/niosh/npptl/topics/respirators/disp\\_part/default.html](https://www.cdc.gov/niosh/npptl/topics/respirators/disp_part/default.html)

<https://www.cdc.gov/niosh/npptl/pdfs/UnderstandDifferenceInfographic-508.pdf>

[https://www.osha.gov/pls/oshaweb/owadisp.show\\_document?p\\_id=12716&p\\_table=standards](https://www.osha.gov/pls/oshaweb/owadisp.show_document?p_id=12716&p_table=standards)

<https://www.cdc.gov/niosh/npptl/hospresptoolkit/default.html>

<https://www.cdc.gov/coronavirus/2019-ncov/communication/print-resources.html>

---

Contact your Fisher Healthcare sales representative to find additional products and learn more.

Explore more products and resources online:

**[fisherhealthcare.com](https://fisherhealthcare.com)** | **[fisherhealthcare.com/respiratoryseason](https://fisherhealthcare.com/respiratoryseason)**

Distributed by Fisher Healthcare. Contact us today:

### In the United States

Order online: [fisherhealthcare.com](https://fisherhealthcare.com)

Call customer service: 1-800-640-0640

© 2022 Thermo Fisher Scientific Inc. All rights reserved.

Trademarks used are owned as indicated at [fishersci.com/trademarks](https://fishersci.com/trademarks).

22-1608 KS 07/22 BN224521509-US

 **fisher**  
healthcare  
part of Thermo Fisher Scientific