



ROTOR SPECIFICATIONS

Type	Fixed Angle
Material	Titanium
Capacity	8 x 2.0 mL
Maximum Speed	150,000 rpm
Tube Dimensions Ø x L	11 x 34 mm
Angle	30°
K Factor	6.1
Net Weight	0.49 kg /1.1 lbs
Warranty	5 years

	RCF	RADIUS
Maximum	899,744 xg	35.8 mm
Average	711,250 xg	28.3 mm
Minimum	522,756 xg	20.8 mm

ROTOR AND ACCESSORIES ORDERING INFORMATION

S150-AT Rotor Package includes:

Description	Cat. No.
S150-AT Rotor	45582
1.0 mL PC Thick-Walled Tubes (qty. 1 pkg. of 100)	45237
Large O-ring for Cover (qty. 2)	45702
Small O-ring for Cover (qty. 2)	45294
Rotor Holding Fixture	45266
Lubricant	61556
Vacuum Grease	65937
Instruction Manual	45735

Accessories:

Description	Cat. No.
Starter Kit for use with Re-Seal Tubes {Includes 1 Crown (45306), 10 Plugs (45307), Wrench (45308) and Removal Tool (45309)}	45305
11 mm x 32 mm Tube Vise	45537
11 mm x 25 mm Tube Vise	45536
Rotor Stand	45357
Cover Opener	45173

LABWARE ORDERING INFORMATION

Tube Vol. (mL)	Vol. Fill (mL)	Description	Cat. No.	Qty. /Pkg.	Tubes /Rotor	Max. Speed (rpm)	Max. RCF (xg)	Dims ØxL (mm)	REQUIRED TUBE CLOSURES, ADAPTERS, TOOLS & ACCESSORIES			
									Type	Cat. No.	Qty. /Pkg.	Description
2.0	1.9	PA Re-Seal Tube	45246	50	8	150,000	899,744	11 x 32	Closure	45306	1	11 mm Noryl Crown ¹
									Closure	45307	10	Stainless Steel Plug
									Tool	45308	1	Wrench
									Tool	45309	1	Tube Removal Tool
									Tool	45537	1	Tube Vise
1.5	1.5	PA Re-Seal Tube	75000501	50	8	150,000	899,744	11 x 25	Closure	45306	1	11 mm Noryl Crown ¹
									Closure	45307	10	Stainless Steel Plug
									Tool	45308	1	Wrench
									Tool	45309	1	Tube Removal Tool
									Tool	45536	1	Tube Vise
1.5	1.5	PA Easy-Seal Tube	75000502	50	8	150,000	899,744	11 x 29	Closure	75000504	1	11 mm Al Crown ¹
									Tool	75000505	1	Crown Clamp
									Tool	75000506	1	Hex Driver
									Tool	75000507	1	Tube Removal Tool
									Tool	75000481	1	Easy-Seal Tube Vise
1.5	1.5	PET Easy-Seal Tube	75000503	50	8	120,000	575,836	11 x 29	Closure	75000504	1	11 mm Al Crown ¹
									Tool	75000505	1	Crown Clamp
									Tool	75000506	1	Hex Driver
									Tool	75000507	1	Tube Removal Tool
									Tool	75000481	1	Easy-Seal Tube Vise
1.0	1.0	PC Thick-Walled Tube	45237	100	8	150,000	899,744	11 x 34	—	—	—	—

¹ Must order one crown for each place in the rotor.

© 2014 Thermo Fisher Scientific Inc. All rights reserved. All trademarks are the property of Thermo Fisher Scientific Inc. and its subsidiaries. Specifications, terms and pricing are subject to change. Not all products are available in all countries. Please consult your local sales representative for details.

For more information, please visit
www.thermoscientific.com/rotors.



ROTOR SPECIFICATIONS

Type	Fixed Angle
Material	Titanium
Capacity	10 x 2.0 mL
Maximum Speed	140,000 rpm
Tube Dimensions Ø x L	11 x 34 mm
Angle	35°
K Factor	5.0
Net Weight	0.8 kg/1.8 lbs
Warranty	5 years

	RCF	RADIUS
Maximum	1,048,684 xg	47.9 mm
Minimum	713,718 xg	32.6 mm

ROTOR AND ACCESSORIES ORDERING INFORMATION

S140-AT Rotor Package includes:

Description	Cat. No.
S140-AT Rotor	45978
PC Thick-Walled Tubes Tube (qty. 1 pkg. of 100)	45237
Large O-ring for Cover	45986
Instruction Manual	45735
Rotor Holding Fixture	45266
Vacuum Grease	65937
Lubricant	61556
Rotor Stand	45357
Cover Opener	45173

Accessories:

Description	Cat. No.
Starter Kit for use with Re-Seal Tubes {Includes 10 crowns (45306), 10 plugs (45307), Wrench (45308) and Removal Tool (45309)}	45305
11 mm x 32 mm Tube Vise	45537
11 mm x 25 mm Tube Vise	45536

LABWARE ORDERING INFORMATION

Tube Vol. (mL)	Vol. Fill (mL)	Description	Cat. No.	Qty. /Pkg.	Tubes /Rotor	Max. Speed (rpm)	Max. RCF (xg)	Dims ØxL (mm)	REQUIRED TUBE CLOSURES, ADAPTERS, TOOLS & ACCESSORIES			
									Type	Cat. No.	Qty. /Pkg.	Description
2.0	1.9	PA Re-Seal Tube	45246	50	10	140,000	1,048,684	11 x 32	Closure	45306	1	11 mm Noryl Crown ¹
									Closure	45307	10	Stainless Steel Plug
									Tool	45308	1	Wrench
									Tool	45309	1	Tube Removal Tool
									Tool	45537	1	Tube Vise
1.5	1.5	PA Re-Seal Tube	75000501	50	10	140,000	1,048,684	11 x 25	Closure	45306	1	11 mm Noryl Crown ¹
									Closure	45307	10	Stainless Steel Plug
									Tool	45308	1	Wrench
									Tool	45309	1	Tube Removal Tool
									Tool	45537	1	Tube Vise
1.5	1.5	PA Easy-Seal Tube	75000502	50	10	140,000	1,048,684	11 x 29	Closure	75000504	1	11 mm Al Crown ¹
									Tool	75000505	1	Crown Clamp
									Tool	75000506	1	Hex Driver
									Tool	75000507	1	Tube Removal Tool
									Tool	75000481	1	Easy-Seal Tube Vise
1.5	1.5	PET Easy-Seal Tube	75000503	50	10	140,000	1,048,684	11 x 29	Closure	75000504	1	11 mm Al Crown ¹
									Tool	75000505	1	Crown Clamp
									Tool	75000506	1	Hex Driver
									Tool	75000507	1	Tube Removal Tool
									Tool	75000481	1	Easy-Seal Tube Vise
1.0	1.0	PC Thick-walled Tubes	45237	100	10	140,000	1,048,684	11 x 34	—	—	—	—
1.0	1.0	PA Thick-walled Tubes	45998	50	10	120,000	770,462	11 x 34	—	—	—	—

¹ Must order one crown for each place in the rotor.

© 2014 Thermo Fisher Scientific Inc. All rights reserved. All trademarks are the property of Thermo Fisher Scientific Inc. and its subsidiaries. Specifications, terms and pricing are subject to change. Not all products are available in all countries. Please consult your local sales representative for details.

For more information, please visit
www.thermoscientific.com/rotors.



ROTOR SPECIFICATIONS

Type	Fixed Angle
Material	Titanium
Capacity	14 x 0.5 mL
Maximum Speed	120,000 rpm
Tube Dimensions Ø x L	8 x 34 mm
Angle	30°
K Factor	7.8
Net Weight	0.57 kg /1.3 lbs
Warranty	5 years

	RCF	RADIUS
Maximum	649,826 xg	40.4 mm
Average	534,015 xg	33.2 mm
Minimum	416,596 xg	25.9 mm

ROTOR AND ACCESSORIES ORDERING INFORMATION

S120-AT3 Rotor Package includes:

Description	Cat. No.
S120-AT3 Rotor	45584
0.5 mL PC Thick-Walled Tubes (qty. 1 pkg. of 100)	45235-AV
Large O-ring for Cover (qty. 2)	45532
Small O-ring for Cover (qty. 2)	45276
Rotor Holding Fixture	45266
Lubricant	61556
Vacuum Grease	65937
Instruction Manual	45735

Accessories:

Description	Cat. No.
Rotor Stand	45357
Cover Opener	45173

LABWARE ORDERING INFORMATION

Tube Vol. (mL)	Vol. Fill (mL)	Description	Cat. No.	Qty. /Pkg.	Tubes /Rotor	Max. Speed (rpm)	Max. RCF (xg)	Dims ØxL (mm)	REQUIRED TUBE CLOSURES, ADAPTERS, TOOLS & ACCESSORIES			
									Type	Cat. No.	Qty. /Pkg.	Description
0.5	0.5	PC Thick-Walled Tube	45235-AV	100	14	120,000	649,826	8 x 34	—	—	—	—
0.5	0.5	PA Thick-Walled Tube	45236	100	14	80,000	288,812	8 x 34	—	—	—	—

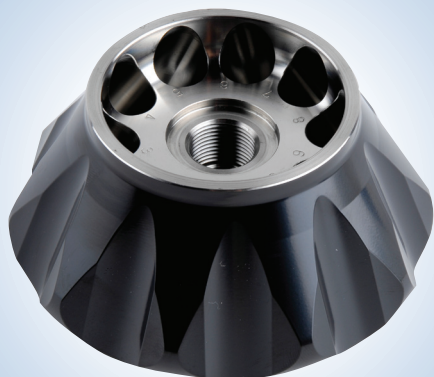
© 2014 Thermo Fisher Scientific Inc. All rights reserved. All trademarks are the property of Thermo Fisher Scientific Inc. and its subsidiaries. Specifications, terms and pricing are subject to change. Not all products are available in all countries. Please consult your local sales representative for details.

For more information, please visit
www.thermoscientific.com/rotors

DSCFGMULTRAS120AT3 1114

Thermo
 SCIENTIFIC

Part of Thermo Fisher Scientific



ROTOR SPECIFICATIONS

Type	Fixed Angle
Material	Titanium
Capacity	10 x 2.0 mL
Maximum Speed	120,000 rpm
Tube Dimensions Ø x L	11 x 34 mm
Angle	30°
K Factor	8.2
Net Weight	0.54 kg /1.2 lbs
Warranty	5 years

	RCF	RADIUS
Maximum	649,826 xg	40.4 mm
Average	529,190 xg	32.9 mm
Minimum	408,554 xg	25.4 mm

ROTOR AND ACCESSORIES ORDERING INFORMATION

S120-AT2 Rotor Package includes:

Description	Cat. No.
S120-AT2 Rotor	45583
1.0 mL PC Thick-Walled Tubes (qty. 1 pkg. of 100)	45237
Large O-ring for Cover (qty. 2)	45532
Small O-ring for Cover (qty. 2)	45294
Rotor Holding Fixture	45266
Lubricant	61556
Vacuum Grease	65937
Instruction Manual	45735

Accessories:

Description	Cat. No.
Starter Kit for use with Re-Seal Tubes {Includes 10 Crown (45306), 10 Plugs (45307), Wrench (45308) and Removal Tool (45309)}	45305
11 mm x 32 mm Tube Vise	45537
11 mm x 25 mm Tube Vise	45536
Rotor Stand	45357
Cover Opener	45173

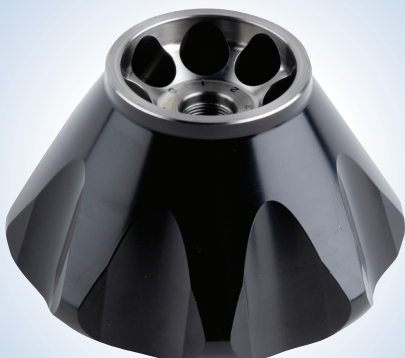
LABWARE ORDERING INFORMATION

Tube Vol. (mL)	Vol. Fill (mL)	Description	Cat. No.	Qty. /Pkg.	Tubes /Rotor	Max. Speed (rpm)	Max. RCF (xg)	Dims ØxL (mm)	REQUIRED TUBE CLOSURES, ADAPTERS, TOOLS & ACCESSORIES			
									Type	Cat. No.	Qty. /Pkg.	Description
2.0	1.9	PA Re-Seal Tube	45246	50	10	120,000	649,826	11 x 32	Closure	45306	1	11 mm Noryl Crown ¹
									Closure	45307	10	Stainless Steel Plug
									Tool	45308	1	Wrench
									Tool	45309	1	Tube Removal Tool
									Tool	45537	1	Tube Vise
1.5	1.5	PA Re-Seal Tube	75000501	50	10	120,000	649,826	11 x 25	Closure	45306	1	11 mm Noryl Crown ¹
									Closure	45307	10	Stainless Steel Plug
									Tool	45308	1	Wrench
									Tool	45309	1	Tube Removal Tool
									Tool	45536	1	Tube Vise
1.5	1.5	PA Easy-Seal Tube	75000502	50	10	120,000	649,826	11 x 29	Closure	75000504	1	11 mm Al Crown ¹
									Tool	75000505	1	Crown Clamp
									Tool	75000506	1	Hex Driver
									Tool	75000507	1	Tube Removal Tool
									Tool	75000481	1	Easy-Seal Tube Vise
1.5	1.5	PET Easy-Seal Tube	75000503	50	10	120,000	649,826	11 x 29	Closure	75000504	1	11 mm Al Crown ¹
									Tool	75000505	1	Crown Clamp
									Tool	75000506	1	Hex Driver
									Tool	75000507	1	Tube Removal Tool
									Tool	75000481	1	Easy-Seal Tube Vise
1.0	1.0	PC Thick-Walled Tube	45237	100	10	120,000	649,826	11 x 34	—	—	—	—

¹ Must order one crown for each place in the rotor.

© 2014 Thermo Fisher Scientific Inc. All rights reserved. All trademarks are the property of Thermo Fisher Scientific Inc. and its subsidiaries. Specifications, terms and pricing are subject to change. Not all products are available in all countries. Please consult your local sales representative for details.

For more information, please visit
www.thermoscientific.com/rotors.



ROTOR SPECIFICATIONS

Type	Fixed Angle
Material	Titanium
Capacity	8 x 5.0 mL
Maximum Speed	110,000 rpm
Tube Dimensions Ø x L	13 x 63 mm
Angle	30°
K Factor	15.4
Net Weight	1.07 kg /2.4 lbs
Warranty	5 years

	RCF	RADIUS
Maximum	690,652 xg	51.1 mm
Average	510,893 xg	37.8 mm
Minimum	331,135 xg	24.5 mm

ROTOR AND ACCESSORIES ORDERING INFORMATION

S110-AT Rotor Package includes:

Description	Cat. No.
S110-AT Rotor ¹	45539
4.0 mL PC Thick-Walled Tubes (qty. 2 pkg. of 50)	45239
Large O-ring for Cover (qty. 2)	45703
Small O-ring for Cover (qty. 2)	45294
Rotor Holding Fixture	45266
Lubricant	61556
Vacuum Grease	65937
Instruction Manual	45735

Accessories:

Description	Cat. No.
Starter Kit for use with 13 mm Re-Seal Tubes {Includes 1 Crown (45321), 10 Plugs (45307), Wrench (45308) and Removal Tool (45309)}	45320
13 mm x 51 mm Tube Vise	45534
Rotor Stand	45357
Cover Opener	45173

¹ Rotor compatible only with Thermo Scientific Sorvall MTX-150 and MX Series micro-ultracentrifuges.

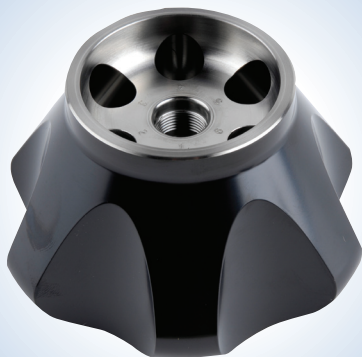
LABWARE ORDERING INFORMATION

Tube Vol. (mL)	Vol. Fill (mL)	Description	Cat. No.	Qty. /Pkg.	Tubes /Rotor	Max. Speed (rpm)	Max. RCF (xg)	Dims ØxL (mm)	REQUIRED TUBE CLOSURES, ADAPTERS, TOOLS & ACCESSORIES			
									Type	Cat. No.	Qty. /Pkg.	Description
5.0	5.1	PA Re-Seal Tube	45248	50	8	110,000	690,652	13 x 51	Closure	45321	1	13 mm Al Crown ²
									Closure	45307	10	Stainless Steel Plug
									Tool	45308	1	Wrench
									Tool	45309	1	Tube Removal Tool
									Tool	45534	1	Tube Vise
5.0	5.0	PA Easy-Seal Tube	75000508	50	8	80,000	365,304	13 x 51	Closure	75000511	1	13 mm Al Crown ²
									Tool	75000505	1	Crown Clamp
									Tool	75000506	1	Hex Driver
									Tool	75000507	1	Tube Removal Tool
									Tool	75000481	1	Easy-Seal Tube Vise
4.0	3.4	PC Thick-Walled Tube	45239	50	8	110,000	690,652	13 x 63	—	—	—	—
3.5	3.5	PA Easy-Seal Tube	75000509	50	8	80,000	365,304	13 x 45	Closure	75000511	1	13 mm Al Crown ²
									Tool	75000505	1	Crown Clamp
									Tool	75000506	1	Hex Driver
									Tool	75000507	1	Tube Removal Tool
									Tool	75000481	1	Easy-Seal Tube Vise
3.5	3.5	PET Easy-Seal Tube	75000510	50	8	80,000	365,304	13 x 45	Closure	75000511	1	13 mm Al Crown ²
									Tool	75000505	1	Crown Clamp
									Tool	75000506	1	Hex Driver
									Tool	75000507	1	Tube Removal Tool
									Tool	75000481	1	Easy-Seal Tube Vise
1.5	1.5	PA Easy-Seal Tube	75000512	50	8	80,000	365,304	13 x 29	Closure	75000511	1	13 mm Al Crown ²
									Tool	75000505	1	Crown Clamp
									Tool	75000506	1	Hex Driver
									Tool	75000507	1	Tube Removal Tool
									Tool	75000481	1	Easy-Seal Tube Vise
1.5	1.5	High Performance Microtube	314352H01	100	8	55,000	172,663	11 x 42	Adapter	45587	1	Adapter for Microtube

² Must order one crown for each place in the rotor.³ Tubes must be purchased from manufacturer (cat. no. 430909).

© 2014 Thermo Fisher Scientific Inc. All rights reserved. Corning is a registered trademark of Corning Inc. All other trademarks are the property of Thermo Fisher Scientific Inc. and its subsidiaries. Specifications, terms and pricing are subject to change. Not all products are available in all countries. Please consult your local sales representative for details.

For more information, please visit
www.thermoscientific.com/rotors.



ROTOR SPECIFICATIONS

Type	Fixed Angle
Material	Titanium
Capacity	6 x 3.5 mL
Maximum Speed	100,000 rpm
Tube Dimensions Ø x L	13 x 51 mm
Angle	30°
K Factor	15.9
Net Weight	1.07 kg /2.4 lbs
Warranty	5 years

	RCF	RADIUS
Maximum	540,628 xg	48.4 mm
Average	414,407 xg	37.1 mm
Minimum	288,186 xg	25.8 mm

ROTOR AND ACCESSORIES ORDERING INFORMATION

S100-AT4 Rotor Package includes:

Description	Cat. No.
S100-AT4 Rotor	45586
3.0 mL PC Thick-Walled Tubes (qty. 2 pkg. of 50)	45238
Large O-ring for Cover (qty. 2)	45296
Small O-ring for Cover (qty. 2)	45294
Rotor Holding Fixture	45266
Lubricant	61556
Vacuum Grease	65937
Instruction Manual	45265

Accessories:

Description	Cat. No.
Rotor Stand	45357
Cover Opener	45173

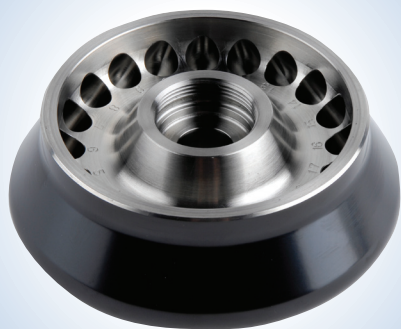
LABWARE ORDERING INFORMATION

Tube Vol. (mL)	Vol. Fill (mL)	Description	Cat. No.	Qty. /Pkg.	Tubes /Rotor	Max. Speed (rpm)	Max. RCF (xg)	Dims ØxL (mm)	REQUIRED TUBE CLOSURES, ADAPTERS, TOOLS & ACCESSORIES			
									Type	Cat. No.	Qty. /Pkg.	Description
3.5	3.2	PA Re-Seal Tube	45247	50	6	100,000	540,628	13 x 35	Closure	45318	1	13 mm Al Crown ¹
									Closure	45307	10	Stainless Steel Plug
									Tool	45308	1	Wrench
									Tool	45309	1	Tube Removal Tool
									Tool	45535	1	Tube Vise
3.5	3.5	PA Easy-Seal Tube	75000509	50	6	100,000	540,628	13 x 45	Closure	75000511	1	13 mm Al Crown ¹
									Tool	75000505	1	Crown Clamp
									Tool	75000506	1	Hex Driver
									Tool	75000507	1	Tube Removal Tool
									Tool	75000481	1	Easy-Seal Tube Vise
3.5	3.5	PET Easy-Seal Tube	75000510	50	6	80,000	346,002	13 x 45	Closure	75000511	1	13 mm Al Crown ¹
									Tool	75000505	1	Crown Clamp
									Tool	75000506	1	Hex Driver
									Tool	75000507	1	Tube Removal Tool
									Tool	75000481	1	Easy-Seal Tube Vise
3.0	2.7	PC Thick-Walled Tube	45238	50	6	100,000	540,628	13 x 51	—	—	—	—
2.0	1.9	PA Re-Seal Tube	75000513	50	6	100,000	540,628	13 x 25	Closure	45318	1	13 mm Al Crown ¹
									Closure	45307	10	Stainless Steel Plug
									Tool	45308	1	Wrench
									Tool	45309	1	Tube Removal Tool
									Tool	45535	1	Tube Vise
1.5	1.5	PA Easy-Seal Tube	75000512	50	6	80,000	346,002	13 x 29	Closure	75000511	1	13 mm Al Crown ¹
									Tool	75000505	1	Crown Clamp
									Tool	75000506	1	Hex Driver
									Tool	75000507	1	Tube Removal Tool
									Tool	75000481	1	Easy-Seal Tube Vise
1.5	1.5	High Performance Microtube	314352H01	100	6	55,000	163,540	13 x 42	Adapter	45244	1	Adapter for Microtube

¹ Must order one crown for each place in the rotor.

© 2014 Thermo Fisher Scientific Inc. All rights reserved. All trademarks are the property of Thermo Fisher Scientific Inc. and its subsidiaries. Specifications, terms and pricing are subject to change. Not all products are available in all countries. Please consult your local sales representative for details.

For more information, please visit
www.thermoscientific.com/rotors



ROTOR SPECIFICATIONS

Type	Fixed Angle
Material	Titanium
Capacity	20 x 0.2 mL
Maximum Speed	100,000 rpm
Tube Dimensions Ø x L	7 x 20 mm
Angle	30°
K Factor	7.0
Net Weight	0.52 kg /1.1 lbs
Warranty	5 years

	RCF	RADIUS
Maximum	435,630 xg	39.0 mm
Average	383,131 xg	34.3 mm
Minimum	330,632 xg	29.6 mm

ROTOR AND ACCESSORIES ORDERING INFORMATION

S100-AT3 Rotor Package includes:

Description	Cat. No.
S100-AT3 Rotor	45585
0.2 mL PC Thick-Walled Tubes (qty. 1 pkg. of 100)	45233
Large O-ring for Cover (qty. 2)	45322
Small O-ring for Cover (qty. 2)	45276
Rotor Holding Fixture	45266
Lubricant	61556
Vacuum Grease	65937
Instruction Manual	45265

Accessories:

Description	Cat. No.
Rotor Stand	45357
Cover Opener	45173

LABWARE ORDERING INFORMATION

Tube Vol. (mL)	Vol. Fill (mL)	Description	Cat. No.	Qty. /Pkg.	Tubes /Rotor	Max. Speed (rpm)	Max. RCF (xg)	Dims ØxL (mm)	REQUIRED TUBE CLOSURES, ADAPTERS, TOOLS & ACCESSORIES			
									Type	Cat. No.	Qty. /Pkg.	Description
0.2	0.2	PC Thick-Walled Tube	45233	100	20	100,000	435,630	7 x 20	—	—	—	—
0.2	0.2	PA Thick-Walled Tube	45234	100	20	80,000	278,803	7 x 20	—	—	—	—

© 2014 Thermo Fisher Scientific Inc. All rights reserved. All trademarks are the property of Thermo Fisher Scientific Inc. and its subsidiaries. Specifications, terms and pricing are subject to change. Not all products are available in all countries. Please consult your local sales representative for details.

For more information, please visit
www.thermoscientific.com/rotors

DSCFGMULTRAS100AT3 1114

Thermo
SCIENTIFIC

Part of Thermo Fisher Scientific



ROTOR SPECIFICATIONS

Type	Fixed Angle
Material	Titanium
Capacity	8 x 8.3 mL
Maximum Speed	80,000 rpm
Tube Dimensions Ø x L	16 x 59 mm
Angle	30°
K Factor	23.2
Net Weight	1.6 kg /3.5 lbs
Warranty	5 years

	RCF	RADIUS
Maximum	414,630 xg	58.0 mm
Average	323,126 xg	45.2 mm
Minimum	230,906 xg	32.3 mm

ROTOR AND ACCESSORIES ORDERING INFORMATION

S80-AT3 Rotor Package includes:

Description	Cat. No.
S80-AT3 Rotor	45590
6.0 mL PC Thick-Walled Tubes (qty. 2 pkg. of 50)	45595
Large O-ring for Cover (qty. 2)	45704
Small O-ring for Cover (qty. 2)	45294
Rotor Holding Fixture	45266
Lubricant	61556
Vacuum Grease	65937
Instruction Manual	45735

Accessories:

Description	Cat. No.
Starter Kit for use with 16 mm Re-Seal Tubes (Includes 1 Crown (45599), 10 Plugs (45307), Wrench (45308) and Removal Tool (45309))	45700
Re-Seal 16 mm x 53 mm Tube Vise	45701
Rotor Stand	45357
Cover Opener	45173

LABWARE ORDERING INFORMATION

Tube Vol. (mL)	Vol. Fill (mL)	Description	Cat. No.	Qty. /Pkg.	Tubes /Rotor	Max. Speed (rpm)	Max. RCF (xg)	Dims ØxL (mm)	REQUIRED TUBE CLOSURES, ADAPTERS, TOOLS & ACCESSORIES			
									Type	Cat. No.	Qty. /Pkg.	Description
8.0	8.3	PA Re-Seal Tube	45597	50	8	80,000	414,630	16 x 53	Closure	45599	1	16 mm Al Crown ¹
									Closure	45307	10	Stainless Steel Plug
									Tool	45308	1	Wrench
									Tool	45309	1	Tube Removal Tool
									Tool	45701	1	Tube Vise
6.0	5.3	PC Thick-Walled Tube	45595	50	8	80,000	414,630	16 x 59	—	—	—	—
6.0	5.3	PA Thick-Walled Tube	45596	50	8	60,000	233,230	16 x 59	—	—	—	—

¹ Must order one crown for each place in the rotor.

© 2014 Thermo Fisher Scientific Inc. All rights reserved. All trademarks are the property of Thermo Fisher Scientific Inc. and its subsidiaries. Specifications, terms and pricing are subject to change. Not all products are available in all countries. Please consult your local sales representative for details.

For more information, please visit
www.thermoscientific.com/rotors



ROTOR SPECIFICATIONS

Type	Fixed Angle
Material	Titanium
Capacity	30 x 0.5 mL
Maximum Speed	80,000 rpm
Tube Dimensions Ø x L	8 x 34 mm
Angle	30°
K Factor	Outer Row: 14 Inner Row: 16
Net Weight	1.6 kg /3.5 lbs
Warranty	5 years

		RCF	RADIUS
Maximum	Outer Row	357,440 xg	50.0 mm
	Inner Row	303,824 xg	42.5 mm
Minimum	Outer Row	253,782 xg	35.5 mm
	Inner Row	200,881 xg	28.1 mm

ROTOR AND ACCESSORIES ORDERING INFORMATION

S80-AT2 Rotor Package includes:

Description	Cat. No.
S80-AT2 Rotor	45589
PC Thick-Walled Tubes (qty. 1 pkg. of 100)	45235
Rotor Holding Fixture	45266
Large O-ring for cover (qty. 2)	S4040544
Small O-ring for Cover (qty. 2)	45294
Instruction Manual	45735
Lubricant	61556
Vacuum Grease	65937

Accessories:

Description	Cat. No.
Rotor Stand	45357
Cover Opener	45173

LABWARE ORDERING INFORMATION

Tube Vol. (mL)	Vol. Fill (mL)	Description	Cat. No.	Qty. /Pkg.	Tubes /Rotor	Max. Speed (rpm)	Max. RCF (xg)	Dims ØxL (mm)	REQUIRED TUBE CLOSURES, ADAPTERS, TOOLS & ACCESSORIES			
									Type	Cat. No.	Qty. /Pkg.	Description
0.5	0.5	PC Thick-Walled Tubes	45235	100	30	80,000	357,440	8 x 34	—	—	—	—
0.5	0.5	PA Thick-Walled Tubes	45236	100	30	80,000	357,440	8 x 34	—	—	—	—

© 2014 Thermo Fisher Scientific Inc. All rights reserved. All trademarks are the property of Thermo Fisher Scientific Inc. and its subsidiaries. Specifications, terms and pricing are subject to change. Not all products are available in all countries. Please consult your local sales representative for details.

For more information, please visit
www.thermoscientific.com/rotors



ROTOR SPECIFICATIONS

Type	Fixed Angle
Material	Titanium
Capacity	20 x 0.5 mL
Maximum Speed	70,000 rpm
Tube Dimensions Ø x L	7 x 56 mm
Angle	30°
K Factor	30.7
Net Weight	1.4 kg/ 3.1 lbs
Warranty	5 years

	RCF	RADIUS
Maximum	307,052 xg	56.1 mm
Average	238,636 xg	43.6 mm
Minimum	169,672 xg	31.0 mm

ROTOR AND ACCESSORIES ORDERING INFORMATION

S70-AT Rotor Package includes:

Description	Cat. No.
S70-AT Rotor	45591
0.5 mL PC Thick-Walled Tubes (qty. 1 pkg. of 100)	45243
Large O-ring for Cover (qty. 2)	45297
Small O-ring for Cover (qty. 2)	45294
Rotor Holding Fixture	45266
Lubricant	61556
Vacuum Grease	65937
Instruction Manual	45735

Accessories:

Description	Cat. No.
Rotor Stand	45357
Cover Opener	45173

LABWARE ORDERING INFORMATION

Tube Vol. (mL)	Vol. Fill (mL)	Description	Cat. No.	Qty. /Pkg.	Tubes /Rotor	Max. Speed (rpm)	Max. RCF (xg)	Dims ØxL (mm)	REQUIRED TUBE CLOSURES, ADAPTERS, TOOLS & ACCESSORIES			
									Type	Cat. No.	Qty. /Pkg.	Description
0.5	0.5	PC Thick-Walled Tube	45243	100	20	70,000	307,052	7 x 56	—	—	—	—

© 2014 Thermo Fisher Scientific Inc. All rights reserved. All trademarks are the property of Thermo Fisher Scientific Inc. and its subsidiaries. Specifications, terms and pricing are subject to change. Not all products are available in all countries. Please consult your local sales representative for details.

For more information, please visit
www.thermoscientific.com/rotors.

DSCFGMULTRAS70AT 1114

Thermo
 SCIENTIFIC

Part of Thermo Fisher Scientific



ROTOR SPECIFICATIONS

Type	Fixed Angle
Material	Aluminum
Capacity	8 x 13.5 mL
Maximum Speed	58,000 rpm
Tube Dimensions Ø x L	16 x 78 mm
Angle	35°
K Factor	50.0
Net Weight	1.9 kg/ 4.2 lbs
Warranty	5 years

	RCF	RADIUS
Maximum	288,959 xg	76.9 mm
Average	219,067 xg	58.3 mm
Minimum	148,800 xg	39.6 mm

ROTOR AND ACCESSORIES ORDERING INFORMATION

S58-A Rotor Package includes:

Description	Cat. No.
S58-A Rotor ¹	45866
10.0 mL PC Thick-Walled Tubes (qty. 2 pkg. of 50)	03237
Large O-ring for Cover (qty. 2)	8062270
Small O-ring for Cover (qty. 2)	45999
Rotor Holding Fixture	45266
Lubricant	61556
Vacuum Grease	65937
Instruction Manual	45735

Accessories:

Description	Cat. No.
Rotor Stand	45357
Cover Opener	45173
Ultracrimp/Clearcrimp Sealing Tool	03920
Crimp Gauge Replacement	03919

¹ Rotor compatible only with Thermo Scientific Sorvall MTX-150 and MX Series micro-ultracentrifuges. Use of this rotor in the Thermo Scientific Sorvall Discovery SE Series requires software upgrade S305612C and S305613C.

LABWARE ORDERING INFORMATION

Tube Vol. (mL)	Vol. Fill (mL)	Description	Cat. No.	Qty. /Pkg.	Tubes /Rotor	Max. Speed (rpm)	Max. RCF (xg)	Dims ØxL (mm)	REQUIRED TUBE CLOSURES, ADAPTERS, TOOLS & ACCESSORIES			
									Type	Cat. No.	Qty. /Pkg.	Description
13.5	12.7	PA Re-Seal Tube	45809	50	8	58,000	288,959	16 x 85	Closure	45810	1	13 mm Al Crown ²
									Closure	45307	10	Stainless Steel Plug
									Tool	45308	1	Wrench
									Tool	45309	1	Tube Removal Tool
									Tool	45534	1	Tube Vise
11.5	10.9	PA Ultracrimp Tube	03987	50	8	58,000	288,959	16 x 76	Closure	Included	50	Ultracrimp Plugs and Caps
									Closure	45808	1	Rotor Cap
									Accessory	03922	2	Tube Rack
									Tool	03920	1	Ultracrimp Sealing Tool
10.0	9.1	PC Thick-Walled Tube ³	03020	25	8	58,000	288,959	16 x 80	Closure	03613	25	PP Sealing Assembly
10.0	6.8	PP Thick-Walled Tube ⁴	03929	50	8	45,000	173,942	16 x 80	Closure	03613	25	PP Sealing Assembly
10.0	6.8	PC Thick-Walled Tube	03237	50	8	58,000	288,959	16 x 71	—	—	—	—
10.0	6.8	PA Thick-Walled Tube	03238	50	8	27,500	64,960	16 x 71	—	—	—	—

² Must order one crown for each place in the rotor.

³ Rated to 50,000 rpm when partially filled.

⁴ Rated to 21,000 rpm when partially filled

© 2014 Thermo Fisher Scientific Inc. All rights reserved. All trademarks are the property of Thermo Fisher Scientific Inc. and its subsidiaries. Specifications, terms and pricing are subject to change. Not all products are available in all countries. Please consult your local sales representative for details.

For more information, please visit www.thermoscientific.com/rotors.



ROTOR SPECIFICATIONS

Type	Swinging Bucket
Material	Aluminum
Capacity	4 x 2.2 mL
Maximum Speed	55,000 rpm
Tube Dimensions Ø x L	11 x 34 mm
Angle	180°
K Factor	43.8
Net Weight	1.19 kg/2.6 lbs
Warranty	5 years

	RCF	RADIUS
Maximum	258,826 xg	76.6 mm
Average	206,114 xg	61.0 mm
Minimum	153,403 xg	45.4 mm

ROTOR AND ACCESSORIES ORDERING INFORMATION

S55-S Rotor Package includes:

Description	Cat. No.
S55-S Rotor	45594
2.2 mL PA Thick-Walled Tubes (qty. 2 pkg. of 50)	45240
Bucket O-ring (qty. 8)	45276
Bucket Stand	45312
Bucket Cap Wrench	45277
Rotor Stand	45275
Lubricant	61556
Vacuum Grease	65937
Instruction Manual	45735

Accessories:

Description	Cat. No.
Conical Adapter Removal Tool	75000480
Spare Buckets	45358

LABWARE ORDERING INFORMATION

Tube Vol. (mL)	Vol. Fill (mL)	Description	Cat. No.	Qty. /Pkg.	Tubes /Rotor	Max. Speed (rpm)	Max. RCF (xg)	Dims ØxL (mm)	REQUIRED TUBE CLOSURES, ADAPTERS, TOOLS & ACCESSORIES			
									Type	Cat. No.	Qty. /Pkg.	Description
2.2	2.2	PC Thin-Walled Tube	45315	50	4	55,000	258,826	11 x 34	—	—	—	—
2.2	2.2	PC Ultrathin Tube	75000515	50	4	55,000	258,826	11 x 34	—	—	—	—
2.2	2.2	PA Thick-Walled Tube	45240	50	4	55,000	258,826	11 x 34	—	—	—	—
1.4	1.4	PC Ultracone Tube	75000516	50	4	55,000	258,826	11 x 32	—	75000470	1	Conical Adapter
									—	75000480	1	Conical Adapter Removal Tool
1.4	1.4	PA Ultracone Tube	75000517	50	4	55,000	258,826	11 x 32	—	75000470	1	Conical Adapter
									—	75000480	1	Conical Adapter Removal Tool
1.0	1.0	PC Thick-Walled Tube	45237	100	4	55,000	258,826	11 x 34	—	—	—	—

© 2014 Thermo Fisher Scientific Inc. All rights reserved. All trademarks are the property of Thermo Fisher Scientific Inc. and its subsidiaries. Specifications, terms and pricing are subject to change. Not all products are available in all countries. Please consult your local sales representative for details.

For more information, please visit
www.thermoscientific.com/rotors.



ROTOR SPECIFICATIONS

Type	Fixed Angle
Material	Aluminum
Capacity	12 x 1.5 mL
Maximum Speed	55,000 rpm
Tube Dimensions Ø x L	11 x 42 mm
Angle	45°
K Factor	39.8
Net Weight	0.8 kg/1.8 lbs
Warranty	5 years

	RCF	RADIUS
Maximum	201,046 xg	59.5 mm
Average	163,202 xg	48.3 mm
Minimum	125,020 xg	37.0 mm

ROTOR AND ACCESSORIES ORDERING INFORMATION

S55-A2 Rotor Package includes:

Description	Cat. No.
S55-A2 Rotor ¹	45865
1.5 mL High Performance Microtubes (qty. 1 pkg. of 100)	314352H01
Large O-ring for Cover (qty. 2)	45451
Small O-ring for Cover (qty. 2)	45294
Rotor Holding Fixture	45266
Lubricant	61556
Vacuum Grease	65937
Instruction Manual	45735

Accessories:

Description	Cat. No.
Rotor Stand	45357
Cover Opener	45173

LABWARE ORDERING INFORMATION

Tube Vol. (mL)	Vol. Fill (mL)	Description	Cat. No.	Qty. /Pkg.	Tubes /Rotor	Max. Speed (rpm)	Max. RCF (xg)	Dims ØxL (mm)	REQUIRED TUBE CLOSURES, ADAPTERS, TOOLS & ACCESSORIES			
									Type	Cat. No.	Qty. /Pkg.	Description
1.5	1.5	High Performance Microtube	314352H01	100	12	55,000	201,046	11 x 42	—	—	—	—

¹ Rotor compatible only with Thermo Scientific Sorvall MTX-150 and MX Series micro-ultracentrifuges. Use of this rotor in the Thermo Scientific Sorvall Discovery SE Series requires software upgrade S305612C and S305613C.

© 2014 Thermo Fisher Scientific Inc. All rights reserved. All trademarks are the property of Thermo Fisher Scientific Inc. and its subsidiaries. Specifications, terms and pricing are subject to change. Not all products are available in all countries. Please consult your local sales representative for details.

For more information, please visit
www.thermoscientific.com/rotors



ROTOR SPECIFICATIONS

Type	Swinging Bucket
Material	Titanium
Capacity	4 x 5.0 mL
Maximum Speed	52,000 rpm
Tube Dimensions Ø x L	13 x 51 mm
Angle	180°
K Factor	78.6
Net Weight	1.7 kg/ 3.7 lbs
Warranty	5 years

	RCF	RADIUS
Maximum	275,458 xg	91.2 mm
Average	197,230 xg	65.3 mm
Minimum	119,002 xg	39.4 mm

ROTOR AND ACCESSORIES ORDERING INFORMATION

S52-ST Rotor Package Includes:

Description	Cat. No.
S52-ST Rotor ¹	45977
5.0 mL PA Thin-Walled Tube (qty. 1 pkg. of 50)	03127
Bucket O-ring (qty. 8)	45999
Bucket Stand	45312
Bucket Cap Wrench	45277
Rotor Stand	45275
Lubricant	61556
Vacuum Grease	65937
Instruction Manual	45735

Accessories:

Description	Cat. No.
Crimp Gauge Replacement	03919
Noryl Replacement Floating Support Caps (qty. 6)	314358
Tube Removal Tool	12826
Cone-Top 13 mm x 32 mm Tube Vise	45537
Conical Adapter Removal Tool	75000480
Spare Buckets (qty. 4)	46107

¹ Rotor compatible only with Thermo Scientific Sorvall MTX-150, MX Series, Discovery M120 SE and Discovery M150 SE micro-ultracentrifuges.

LABWARE ORDERING INFORMATION

Tube Vol. (mL)	Vol. Fill (mL)	Description	Cat. No.	Qty. /Pkg.	Tubes /Rotor	Max. Speed (rpm)	Max. RCF (xg)	Dims ØxL (mm)	REQUIRED TUBE CLOSURES, ADAPTERS, TOOLS & ACCESSORIES			
									Type	Cat. No.	Qty. /Pkg.	Description
5.0	5.0	PA Thin-Walled Tube	03127	50	4	52,000	275,458	13 x 51	—	—	—	—
5.0	5.0	PET Thin-Walled Tube	46101	50	4	52,000	275,458	13 x 51	—	—	—	—
3.5	3.5	PA Thick-Walled Tube	46102	50	4	52,000	275,458	13 x 51	—	—	—	—
2.7	2.7	PC Thick-Walled Tube	45238	50	4	52,000	275,458	13 x 51	—	—	—	—
3.5	3.4	PA Ultracone Tube	75000473	50	4	52,000	275,458	13 x 48	Adapter Tool	75000468 75000480	1 1	Conical Adapter Conical Adapter Removal Tool
3.5	3.4	PET Ultracone Tube	75000519	50	4	52,000	275,458	13 x 48	Adapter Tool	75000468 75000480	1 1	Conical Adapter Conical Adapter Removal Tool
3.5	3.1	PA Cone-Top Tube	75000456	50	4	52,000	275,458	13 x 32	Closure	75000457	1	13 mm Noryl Crown
									Closure	45307	10	Stainless Steel Plug
									Tool	45308	1	Wrench
									Tool	45309	1	Tube Removal Tool
									Tool	45537	1	Tube Vise
2.0	2.0	PA Cone-Top Tube	75000458	50	4	52,000	275,458	13 x 25	Closure	75000457	1	13 mm Noryl Crown
									Closure	45307	10	Stainless Steel Plug
									Tool	45308	1	Wrench
									Tool	45309	1	Tube Removal Tool
									Tool	45537	1	Tube Vise

© 2014 Thermo Fisher Scientific Inc. All rights reserved. All trademarks are the property of Thermo Fisher Scientific Inc. and its subsidiaries. Specifications, terms and pricing are subject to change. Not all products are available in all countries. Please consult your local sales representative for details.

For more information, please visit
www.thermoscientific.com/rotors.



ROTOR SPECIFICATIONS

Type	Swinging Bucket
Material	Titanium
Capacity	4 x 7.0 mL
Maximum Speed	50,000 rpm
Tube Dimensions Ø x L	13 x 51 mm
Angle	180°
K Factor	76.6
Net Weight	1.8 kg/3.9 lbs
Warranty	5 years

	RCF	RADIUS
Maximum	252,721 xg	90.5 mm
Average	185,701 xg	66.5 mm
Minimum	118,681 xg	42.5 mm

ROTOR AND ACCESSORIES ORDERING INFORMATION

S50-ST Rotor Package includes:

Description	Cat. No.
S50-ST Rotor ¹	45541
PA Thin-Walled Tubes (qty. 1 pkg. of 50)	S309146A
Bucket O-ring (qty. 8)	8062220
Bucket Stand	45312
Bucket Cap Wrench	45277
Rotor Stand	45275
Lubricant	61556
Vacuum Grease	65937
Instruction Manual	45735

Accessories:

Description	Cat. No.
Spare Buckets (qty. 4)	46107

LABWARE ORDERING INFORMATION

Tube Vol. (mL)	Vol. Fill (mL)	Description	Cat. No.	Qty. /Pkg.	Tubes /Rotor	Max. Speed (rpm)	Max. RCF (xg)	Dims ØxL (mm)	REQUIRED TUBE CLOSURES, ADAPTERS, TOOLS & ACCESSORIES			
									Type	Cat. No.	Qty. /Pkg.	Description
7.0	7.0	PET Tube Assembly	S309168A	50	4	50,000	252,721	16 x 52	—	—	—	—
7.0	7.0	PA Tube Assembly	S309146A	50	4	50,000	252,721	16 x 52	—	—	—	—

¹ Rotor compatible only with Thermo Scientific Sorvall MTX-150 and MX Series micro-ultracentrifuges.

© 2014 Thermo Fisher Scientific Inc. All rights reserved. All trademarks are the property of Thermo Fisher Scientific Inc. and its subsidiaries. Specifications, terms and pricing are subject to change. Not all products are available in all countries. Please consult your local sales representative for details.

For more information, please visit
www.thermoscientific.com/rotors



ROTOR SPECIFICATIONS

Type	Fixed Angle
Material	Aluminum
Capacity	6 x 30 mL
Maximum Speed	50,000 rpm
Tube Dimensions Ø x L	26 x 96 mm
Angle	35°
K Factor	60.7
Net Weight	2.0 kg/4.4 lbs
Warranty	5 years

	RCF	RADIUS
Maximum	209,438 xg	75.0 mm
Average	162,244 xg	58.1 mm
Minimum	115,051 xg	41.2 mm

ROTOR AND ACCESSORIES ORDERING INFORMATION

S50-A Rotor Package includes:

Description	Cat. No.
S50-A Rotor ¹	45540
25.0 mL PC Thick-Walled Tubes (qty. 2 pkg of 10)	75000610
Large O-ring for Cover (qty. 2)	8062014
Small O-ring for Cover (qty. 2)	8062285
Rotor Holding Fixture	45266
Rotor Stand	45357
Tweezers	45272
Tool Box (B)	320717
Lubricant	61556
Vacuum Grease	65937
Instruction Manual	45735

Accessories:

Description	Cat. No.
Rotor Stand	45357
Cover Opener	45173

¹ Rotor compatible only with Thermo Scientific Sorvall MTX-150 and MX Series micro-ultracentrifuges.

LABWARE ORDERING INFORMATION

Tube Vol. (mL)	Vol. Fill (mL)	Description	Cat. No.	Qty. /Pkg.	Tubes /Rotor	Max. Speed (rpm)	Max. RCF (xg)	Dims ØxL (mm)	REQUIRED TUBE CLOSURES, ADAPTERS, TOOLS & ACCESSORIES			
									Type	Cat. No.	Qty. /Pkg.	Description
30.0	31.0	PA Re-Seal Tube	75000514	50	6	50,000	209,438	26 x 76	Closure	75000521	1	26 mm Al Crown ²
									Closure	45307	10	Stainless Steel Plug
									Tool	45308	1	Wrench
									Tool	45309	1	Tube Removal Tool
									Tool	75000409	1	Tube Vise
25.0	19.8	PC Thick-Walled Tube	75000610	10	6	50,000	209,438	26 x 96	—	—	—	—
25.0	19.8	PA Thick-Walled Tube	75000611	10	6	30,000	75,398	26 x 96	—	—	—	—
20.0	20.3	PC Bottle Assembly	75000612	6	6	50,000	209,438	26 x 80	—	—	—	—

² Must order one crown for each place in the rotor.

© 2014 Thermo Fisher Scientific Inc. All rights reserved. All trademarks are the property of Thermo Fisher Scientific Inc. and its subsidiaries. Specifications, terms and pricing are subject to change. Not all products are available in all countries. Please consult your local sales representative for details.

For more information, please visit
www.thermoscientific.com/rotors.



ROTOR SPECIFICATIONS

Type	Fixed Angle
Material	Titanium
Capacity	8 x 2.0 mL
Maximum Speed	120,000 rpm
Tube Dimensions Ø x L	11 x 32 mm
Angle	0°
K Factor	7.9
Net Weight	0.63 kg/1.4 lbs
Warranty	5 years

	RCF	RADIUS
Maximum	500,237 xg	31.1 mm
Average	410,162 xg	25.5 mm
Minimum	320,088 xg	19.9 mm

ROTOR AND ACCESSORIES ORDERING INFORMATION

S120-VT Rotor Package includes:

Description	Cat. No.
S120-VT Rotor	45593
PA Re-Seal Tubes (qty. 2 pkg. of 50)	45246
Crowns (qty. 8)	45310
Stainless Steel Plugs for Re-Seal tubes (qty. 1 pkg. of 10)	45307
Removal Tool	45309
Wrench	45308
Rotor Caps (qty. 8)	45311
Rotor Cap Wrench	45271
Rotor Holding Fixture	45446
Torque Wrench	45483
Lubricant	61556
Vacuum Grease	65937
Instruction Manual	45742
Starter Kit for use with Re-Seal Tubes (Includes 10 Crowns (45306), 10 Plugs (45307), Wrench (45308) and Removal Tool (45309))	45305
Tube Vise	45538
Tube Racks	06822
Ultracrimp Sealing Tool	03920
Replacement Plugs	03999

LABWARE ORDERING INFORMATION

Tube Vol. (mL)	Vol. Fill (mL)	Description	Cat. No.	Qty. /Pkg.	Tubes /Rotor	Max. Speed (rpm)	Max. RCF (xg)	Dims ØxL (mm)	REQUIRED TUBE CLOSURES, ADAPTERS, TOOLS & ACCESSORIES			
									Type	Cat. No.	Qty. /Pkg.	Description
2.0	1.9	PA Re-Seal Tube	45246	50	8	120,000	500,237	11 x 32	Closure	45306	1	11 mm Al Crown
									Closure	45307	10	Stainless Steel Plug
									Tool	45308	1	Wrench
									Tool	45309	1	Tube Removal Tool
									Tool	45537	1	Tube Vise
1.5	1.5	PA Ultracrimp Tube	06708	50	8	120,000	500,237	11 x 37	Closure	Included	50	Ultracrimp Plugs and Caps
									Closure	06797	1	Rotor Cap
									Accessory	06822	1	Tube Racks
									Tool	03920	1	Ultracrimp Sealing Tool

© 2014 Thermo Fisher Scientific Inc. All rights reserved. All trademarks are the property of Thermo Fisher Scientific Inc. and its subsidiaries. Specifications, terms and pricing are subject to change. Not all products are available in all countries. Please consult your local sales representative for details.

For more information, please visit
www.thermoscientific.com/rotors.