

VACUUM DRYING CHAMBERS

Series VD | Vacuum drying chambers for non-flammable solvents



Model VD 115

FEATURES:

- Temperature range: +9 °C above ambient temperature to +220 °C
- Controller with digital display of pressure and temperature
- Program-controlled drying monitoring with automatic ventilation at end of process
- 1 aluminum expansion rack, can be custom-positioned
- Shatterproof, spring-mounted safety glass panel

Sizes 1, 2, 4 cu.ft.

Series VDL | Vacuum drying chambers for flammable solvents



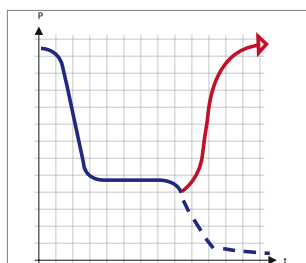
Model VDL 115

FEATURES:

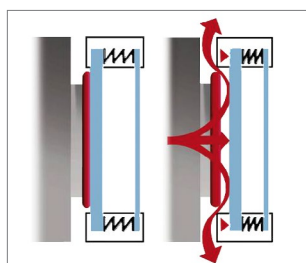
- Temperature range: +9 °C above ambient temperature to +110 °C
- ATEX conformity for units: EX II 2/3/- G IIB T3 Gb/Gc/- X
- Intuitive touchscreen controller with graphical pressure and temperature display
- Program-controlled drying monitoring with automatic ventilation at end of process
- Pressure control device for heating activated from < 100 mbar
- Shatterproof, spring-mounted safety glass panel
- Expanded safety functions
- 2 aluminum expansion racks, can be custom-positioned

Sizes 1, 2, 4 cu.ft.

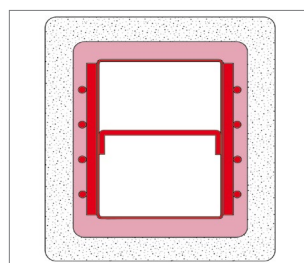
Advantages at a glance



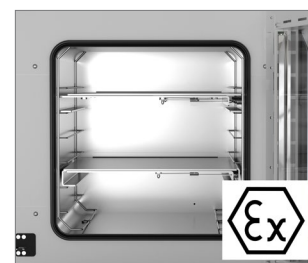
AUTOMATIC DRYING DETECTION



TESTED SAFETY



JACKET HEATING



Series VDL: EXPLOSION-PROTECTED INTERIOR

TECHNICAL DATA

Description	VD 23	VD 56	VD 115	VDL 23	VDL 56	VDL 115
Measures						
Interior volume [cu.ft.]	0.8	1.9	4.2	0.8	1.9	4.2
Net weight of the unit (empty) [lbs]	150	223	322	159	229	348
Permitted load [lbs]	110	132	154	110	132	154
Load per rack [lbs]	44	44	44	44	44	44
Wall clearance back [in]	3.94	3.94	3.94	3.94	3.94	3.94
Wall clearance sidewise [in]	2.76	2.76	2.76	2.76	2.76	2.76
Internal Dimensions						
Width [in]	11.23	15.76	19.94	11.23	15.76	19.94
Height [in]	11.23	15.76	19.94	11.23	15.76	19.94
Depth [in]	11.62	13.51	18.12	11.62	13.51	18.12
Housing dimensions not incl. fittings and connections						
Width net [in]	20.61	25.14	29.27	20.61	25.14	29.27
Height net [in]	27.5	32.11	37.11	27.5	32.11	37.11
Depth net [in]	16.27	18.16	22.89	16.27	18.16	22.89
Performance Data Temperature						
Temperature range +9 °C above ambient temperature to [°C]	220	220	220	110	110	110
Temperature variation at 100 °C [± K]	1	1.5	2.9	1	1.5	2.9
Temperature fluctuation [± K]	0.1	0.1	0.1	0.1	0.1	0.1
Heating-up time to 100 °C [min]	80	80	130	150	140	170
Electrical data						
Nominal power (version 120 V) [kW]	0.9	1.4	1.6	0.9	1.4	1.6
Nominal power (version 230 V) [kW]	0.9	1.4	1.6	0.9	1.4	1.6
Fixtures						
Number of shelves (std./max.)	1/4	1/5	1/6	2/4	2/5	2/6
Cat. No.	08111928	08111929	08111930	08111931	08111932	08111933

ADDITIONAL OPTIONS AND ACCESSORIES

Pump module with vacuum pump

The pump module lifts your vacuum oven to the optimum working height, it also significantly reduces the noise of the vacuum pump and protects the pump and glass material from mechanical damage. The pump in the module can be switched on and off using a switchable socket via the control of the vacuum furnace.



Vacuum pumps

Our range of membrane pumps, chemistry membrane pumps, or speed-controlled chemistry membrane pumps is perfectly matched to the BINDER vacuum chambers in question. When connected to the pump chamber, the vacuum pump and flask are protected against mechanical damage.



Contact us today:

In the United States

Order online: fishersci.com

Fax an order: 1-800-926-1166

Call customer service: 1-800-766-7000

 **fisher scientific**
part of Thermo Fisher Scientific