

# Fisher Scientific North America

## Quality and Capabilities Self-Assessment

Dear Valued Customer,

Thank you for your interest in doing business with us.

The Fisher Scientific channel is your one-stop shop for a variety of global product and service brands, offering a comprehensive selection of laboratory equipment, chemicals, instruments, biological products, and consumable supplies. With an extensive list of exclusive alliances with major manufacturers and our own Fisherbrand™ line of products, we provide easy access to the items that are most in demand — all from one source.

We developed this self assessment in an effort to answer your questions about our business and capabilities. If you have further questions about our capabilities in North America, please contact our customer service teams.

*Risa V. Witte*

## 1. Introduction

The Fisher Scientific channel helps customers working in scientific research, safety, healthcare, and education to increase productivity and efficiency. Through this global channel, we offer a complete portfolio of laboratory equipment, chemicals, supplies, and services. We provide consistent service across North America and Europe, with strategically located regional offices and distribution centers for prompt, responsive delivery.

Through fishersci.com (for U.S.) and fishersci.ca (for Canada), we provide real-time stock availability and a range of features to help you easily find and purchase exactly what you need. Plus, our printed catalogs cover the entire breadth of general laboratory work.

## 2. General Information

### 2.1 Locations

Country	City, State	Company Name	Business Address	Contact	Capabilities
United States (Western Region)	Dallas, Texas	Fisher Scientific Company L.L.C.	4951 Langdon Road, Suite 170, Dallas, TX 75241	Tel: 800-766-7000 Fax: 800-926-1166	Distribution Center
	Chino, California	Fisher Scientific Company L.L.C.	6722 Bickmore Avenue Chino, CA 91708	Tel: 800-766-7000 Fax: 800-926-1166	Distribution Center
	Tracy, California	Fisher Scientific Company L.L.C.	5902 Hopkins Road Tracy, CA 95377	Tel: 800-766-7000 Fax: 800-926-1166	Distribution Center
	Denver, Colorado	Fisher Scientific Company L.L.C.	4700 Moline Avenue Denver, CO 80239	Tel: 800-766-7000 Fax: 800-926-1166	Distribution Center
	Hanover Park, Illinois	Fisher Scientific Company L.L.C.	4500 Turnberry Drive Hanover Park, IL 60133	Tel: 800-766-7000 Fax: 800-926-1166	Call Center Distribution Center
	Houston, Texas	Fisher Scientific Company L.L.C.	11450 Compaq Center Drive Suite #570 Houston TX 77070	Tel: 800-766-7000 Fax: 800-926-1166	Call Center
	Sumner, Washington	Fisher Scientific Company L.L.C.	14302 24th Street East Sumner, WA 98390	Tel: 800-766-7000 Fax: 800-926-1166	Distribution Center

Country	City, State/Province	Company Name	Business Address	Contact Information	Capabilities
United States (Eastern Region)	Suwanee, Georgia	Fisher Scientific Company L.L.C.	2775 Horizon Ridge Court Suwanee, GA 30024	Tel: 800-766-7000 Fax: 800-926-1166	Distribution Center
	Suwanee, Georgia	Fisher Scientific Company L.L.C.	3970 Johns Creek Court Suwanee, GA 30024	Tel: 800-766-7000 Fax: 800-926-1166	Call Center
	Florence, Kentucky	Fisher Scientific Company L.L.C.	7383 Empire Drive, Suite A Florence, KY 41042	Tel: 800-766-7000 Fax: 800-926-1166	Distribution Center
	Agawam, Massachusetts	Fisher Scientific Company L.L.C.	325 Bowles Road Agawam, MA 01001	Tel: 800-766-7000 Fax: 800-926-1166	Distribution Center
	Raleigh, North Carolina	Fisher Scientific Company L.L.C.	3315 Atlantic Avenue Raleigh, NC 27604	Tel: 800-766-7000 Fax: 800-926-1166	Distribution Center
	Nazareth, Pennsylvania	Fisher Scientific Company L.L.C.	6771 Silvercrest Road Nazareth, PA 18064	Tel: 800-766-7000 Fax: 800-926-1166	Distribution Center
	Pittsburgh, Pennsylvania	Fisher Scientific Company L.L.C.	300 Industry Drive Pittsburgh, PA 15275	Tel: 800-766-7000 Fax: 800-926-1166	Corporate Office
Canada	Ottawa, Ontario	Fisher Scientific Company, Canada	112 Colonnade Road Ottawa, ON K2E 7L6	Tel: 800-234-7437 Fax: 800-463-2996	Customer Service Headquarters
	Whitby, Ontario	Fisher Scientific Company, Canada	111 Scotia Court Whitby, ON L1N 6J6	Tel: 800-234-7437 Fax: 800-463-2996	Distribution Center
	Edmonton, Alberta	Fisher Scientific Company, Canada	10720-178 Street Edmonton, AL T5S 1J3	Tel: 800-234-7437 Fax: 800-463-2996	Distribution Center
Puerto Rico	Cayey, Puerto Rico	Fisher Scientific Company L.L.C.	Carretea #1 Km. 56.4 Barrio Montellano Cayey, PR 00737-8500	Tel: 787-535-3104 Fax: 787-738-5999	Call Center Distribution Center

## 2.2 Contact Information

Department	Telephone Number	Fax Number
Customer Service – United States	800-766-7000	800-926-1166
Customer Service – Puerto Rico	787-535-3104	787-738-5999
Customer Service – Canada	800-234-7437	800-463-2996
Research/General	800-766-7000	800-926-1166
Healthcare	800-640-0640	800-290-0290
Safety	800-772-6733	800-772-7702
Accounts Payable	800-582-3095 ext. 506-1756	412-249-2187
Accounts Receivable	724-517-1500	724-517-2071
Finance – Canada	800-234-7437	613-226-4825

For additional information contact  
[customerforms.ccg@thermofisher.com](mailto:customerforms.ccg@thermofisher.com).

Department	Email Address
Customer Service (U.S.)	<a href="mailto:fishercustomerservice.us@thermofisher.com">fishercustomerservice.us@thermofisher.com</a>
Customer Service (Canada)	<a href="mailto:help@thermofisher.com">help@thermofisher.com</a>
Fax Orders	<a href="mailto:fs.order@thermofisher.com">fs.order@thermofisher.com</a>
Request a Quote	<a href="mailto:cs.quotes@thermofisher.com">cs.quotes@thermofisher.com</a>
Tax Exemption/W9 Fisher Scientific Business License Information	<a href="mailto:cs.tax@thermofisher.com">cs.tax@thermofisher.com</a>
Military Orders/ Municipal Orders Quotes/Government Contract Orders	<a href="mailto:cso.cat@thermofisher.com">cso.cat@thermofisher.com</a>
MSDS Requests	<a href="mailto:EMSDS.RA@thermofisher.com">EMSDS.RA@thermofisher.com</a>
Import/Export Group	<a href="mailto:IMEX@thermofisher.com">IMEX@thermofisher.com</a>
Regulatory Group (U.S.)	<a href="mailto:regulatoryaffairs@thermofisher.com">regulatoryaffairs@thermofisher.com</a>
Quality Group (U.S.)	<a href="mailto:QA.CCG@thermofisher.com">QA.CCG@thermofisher.com</a>
Quality Group (Canada)	<a href="mailto:Quality.Regulatory@thermofisher.com">Quality.Regulatory@thermofisher.com</a>

## 2.3 Parent Company Information

Thermo Fisher Scientific Inc. (NYSE: TMO) is the world leader in serving science, generating \$40 billion in annual revenue. Our Mission is to enable our customers to make the world healthier, cleaner and safer. Whether our customers are accelerating life sciences research, solving complex analytical challenges, improving patient diagnostics and therapies or increasing productivity in their laboratories, we are here to support them. Our global team of more than 100,000 colleagues delivers an unrivaled combination of innovative technologies, purchasing convenience and pharmaceutical services through our industry-leading brands, including Thermo Scientific, Applied Biosystems, Invitrogen, Fisher Scientific, Unity Lab Services, Patheon, and PPD.

## 2.4 Fisher Scientific Products and Services

This self-assessment form applies to the distribution of the laboratory and research products, equipment, chemicals, consumables, and reagents that are available from the Fisher Scientific portfolio. The Fisher Scientific channel does not manufacture products and acts as a distributor only.

## 2.5 Fisher Scientific Organization Chart

Please see Appendix 1

## 2.6 Financial Information

Legal Entity/Address	Fisher Scientific Company L.L.C. is a Delaware limited liability company with a principal place of business at 300 Industry Drive, Pittsburgh, PA 15275. Fisher Scientific Company L.L.C. is a wholly-owned subsidiary of Fisher Scientific International L.L.C.		
Parent Company/Address	Fisher Scientific International L.L.C. is a Delaware limited liability company with a principal place of business at 168 Third Avenue Waltham, MA 02451. Fisher Scientific International L.L.C. is a wholly-owned subsidiary of Thermo Fisher Scientific Inc. Thermo Fisher Scientific Inc. is a Delaware corporation with a principal place of business at 168 Third Avenue Waltham, MA 02451. Thermo Fisher Scientific Inc. is publicly traded on the New York Stock Exchange under the symbol "TMO."		
Legal Entity Formed	1998		
Fisher Scientific Formation Date	January 8, 1998		
Year Company Founded	1902		
State of Formation	Delaware		
Cage Codes (also registered with CCR and ORCA)	Pittsburgh - 22527	Suwanee - 8E930	
	Hanover Park - 5E871	Tampa - 1VP93	
	Puerto Rico - 1J7C3		
Products Provided	The Fisher Scientific channel distributes laboratory chemicals, reagents, consumables, instrumentation and equipment, clinical equipment and supplies, and safety equipment and supplies.		
FDA Registration Number	2517925		
Tax ID#		23-2942737	02-0451017
		Fisher Scientific Company L.L.C.	Fisher Scientific International L.L.C.
DUNS # and Rating	5A2	00-4321519	55-744-8065
		Fisher Scientific Company L.L.C.	Fisher Scientific International L.L.C.
DUNS	SIC	NAIC	
SIC/NAICS/UNSPSC Codes	2819	325998	Misc. Chemical Product and Preparation Mfg.
	2531	337127	Institutional Furniture Manufacturing
	5049	423490	Wholesale Trade of Professional Equipment
	5047	423450	Industrial Safety Devices
	5087	423850	Firefighting Equipment and Supplies
	3821	339113	Surgical Appliance and Supplies Manufacturing
	5162	424610	Plastic Materials and Basic Forms and Shapes
		541380	Testing Laboratories
Remittance Addresses (Varies by customer ZIP code)	<b>Atlanta P.O. Box 404705 Atlanta, GA 30384-4705</b> <b>Customer's ZIP code starts with:</b> 224-225, 228-253, 255-259, 261-266, 268-399, 403-409, 411-418, 425-426, 669-679, 700-767, 770-778, 780-782, 785-789, 798-807, 816-820, 822-831, 865-885, 974-977, 983-985		
	<b>Boston P.O. Box 3648 Boston, MA 02241-3648</b> <b>Customer's ZIP code starts with:</b> 005-149, 169-214, 216-223, 226-227, 790-794		
	<b>Chicago 13551 Collections Center Drive Chicago, IL 60693</b> <b>Customer's ZIP code starts with:</b> 215, 254, 260, 267, 400-402, 410, 420-424, 427-668, 680-693, 768-769, 779, 783-784, 795-797, 808-815, 821, 832-863, 894-898, 939-961, 970-973, 978-982, 986-999		
	<b>Los Angeles File #50129 Los Angeles, CA 90074-0129</b> <b>Customer's ZIP code starts with:</b> 864, 889-893, 900-938, 967-969		
Are your company's contracts compliant with Cost Account Standards?			No
Does your company have an approved Purchasing Program?			No
Is Fisher Scientific Company L.L.C. a publicly traded company? Fisher Scientific Company L.L.C. is a wholly-owned, indirect subsidiary of Thermo Fisher Scientific Inc. ("Thermo Fisher"). Thermo Fisher is publicly traded on the New York Stock Exchange under the symbol TMO.			No

## 3. Quality, Environmental, and Corporate Social Responsibility

### 3.1 ISO 9001 Quality Management Certification

Country	City, State/Province	Company Name	Audit Company	Issue Date	Expiration
United States	Sumner, Washington	Fisher Scientific Company L.L.C.	SGS	02/06/2021	02/06/2024
	Chino, California	Fisher Scientific Company L.L.C.	SGS	02/06/2021	02/06/2024
	Denver, Colorado	Fisher Scientific Company L.L.C.	SGS	02/06/2021	02/06/2024
	Suwanee, Georgia	Fisher Scientific Company L.L.C.	SGS	02/06/2021	02/06/2024
	Hanover Park, Illinois	Fisher Scientific Company L.L.C.	SGS	02/06/2021	02/06/2024
	Agawam, Massachusetts	Fisher Scientific Company L.L.C.	SGS	02/06/2021	02/06/2024
	Nazareth, Pennsylvania	Fisher Scientific Company L.L.C.	SGS	02/06/2021	02/06/2024
	Dallas, Texas	Fisher Scientific Company L.L.C.	SGS	02/06/2021	02/06/2024
	Raleigh, North Carolina	Fisher Scientific Company L.L.C.	SGS	02/06/2021	02/06/2024
	Tracy, California	Fisher Scientific Company L.L.C.	SGS	02/06/2021	02/06/2024
Canada	Edmonton, Alberta	Fisher Scientific Company, Canada	SGS	01/10/2021	01/10/2024
	Ottawa, Ontario	Fisher Scientific Company, Canada	SGS	01/10/2021	01/10/2024
	Whitby, Ontario	Fisher Scientific Company, Canada	SGS	01/10/2021	01/10/2024
Puerto Rico	Cayey	Fisher Scientific Company L.L.C.	SGS	02/06/2021	02/06/2024

### 3.2 ISO 13485 Quality Management Certification

Country	City, Province	Company Name	Audit Company	Issue Date	Expiration
Canada	Edmonton, Alberta	Fisher Scientific Company, Canada	SGS	12/23/2019	12/23/2022
	Ottawa, Ontario	Fisher Scientific Company, Canada	SGS	12/23/2019	12/23/2022
	Whitby, Ontario	Fisher Scientific Company, Canada	SGS	12/23/2019	12/23/2022

### 3.3 Wholesale Distributor's NABP Accreditation

Country	City, State	Company Name	Audit Company	Expiration
United States	Sumner, Washington	Fisher Scientific Company L.L.C.	National Association of Boards of Pharmacy	08/06/2024
	Tracy, California	Fisher Scientific Company L.L.C.	National Association of Boards of Pharmacy	12/02/2022
	Chino, California	Fisher Scientific Company L.L.C.	National Association of Boards of Pharmacy	01/03/2023
	Hanover Park, Illinois	Fisher Scientific Company L.L.C.	National Association of Boards of Pharmacy	02/17/2023
	Suwanee, Georgia	Fisher Scientific Company L.L.C.	National Association of Boards of Pharmacy	02/17/2023
	Nazareth, Pennsylvania	Fisher Scientific Company L.L.C.	National Association of Boards of Pharmacy	Re-accreditation in Process
	Denver, Colorado	Fisher Scientific Company L.L.C.	National Association of Boards of Pharmacy	07/05/2023
	Agawam, Massachusetts	Fisher Scientific Company L.L.C.	National Association of Boards of Pharmacy	Re-accreditation in Process
	Dallas, Texas	Fisher Scientific Company L.L.C.	National Association of Boards of Pharmacy	Re-accreditation in Process
	Raleigh, North Carolina	Fisher Scientific Company L.L.C.	National Association of Boards of Pharmacy	11/17/2023
	Florence, Kentucky	Fisher Scientific Company L.L.C.	National Association of Boards of Pharmacy	04/12/2024

NABP accreditation is valid for three years. Facilities listed with “Re-accreditation in Process” will remain accredited throughout the re-accreditation process.

### 3.4 Quality Information

Do you have an established, documented, implemented, and maintained Quality Management System?	Yes
Do you have a Quality Manual with documented procedures to support your QMS?	Yes
Do you have a system in place to ensure that only the latest version of procedures or SOPs are used?	Yes
Do you have business and management processes for the regular review of quality performance identifying areas for improvement?	Yes
Do you conduct regular internal audits for the purpose of confirming the effectiveness of your quality systems?	Yes
Do you provide employees with training and information on quality matters that impact their work?	Yes
Do you have a documented complaint handling procedure?	Yes
Do you have a formal written process for the management of product recalls?	Yes
Do you have a formal procedure for implementing corrective and preventive actions?	Yes
Does the CAPA process provide for the investigation of the root cause of quality issues and the determination of the corrective action needed to eliminate the root cause?	Yes
Are there processes to ensure that changes to laws and regulations are identified and the quality management system updated accordingly?	Yes

### 3.5 Environmental Information

Do you have a formal Environmental and Sustainability Policy and Objectives?	Yes
Do you have objectives around reducing waste?	Yes
Do you have objectives around energy consumption and your carbon footprint?	Yes
Do you have objectives around reducing water usage and other raw material consumption?	Yes
Do you set environmental objectives and measure performance against them?	Yes
Do you have business and management processes for the regular review of environmental and sustainability performance and identifying areas for improvement?	Yes
Do you conduct regular internal audits for the purpose of confirming the effectiveness of your environmental system?	Yes
Do you provide employees with environmental and sustainability training and information?	Yes

### 3.6 Business Ethics and Corporate Social Responsibility

Do you have a code of business conduct?	Yes
Do you have a written anti-bribery and corruption policy?	Yes
Do you have a written policy relating to corporate governance and business ethics?	Yes
Do you have a corporate social responsibility program?	Yes
Do you have a policy concerning equality and diversity?	Yes
Do you engage in charitable work or volunteering and/or support employees in similar activities?	Yes

## 4. Supplier Management

North American supply chain organization with sub-functions leveraging common processes and procedures:

- **Distribution** – located strategically to provide a high-service, low-cost model
- **Purchasing and Planning** – North American planning and execution provide high fill-rates with reduced inventory and dead and excess exposure
- **Transportation** – Fisher Scientific group, set within a Thermo Fisher Scientific corporate structure, enabling maximum carrier leverage

## 5. Employees and Training

### 5.1 Fisher Scientific Employees in North America

Country	Approximate Number of Fisher Scientific Employees
United States	2,600+
Canada	350+
Puerto Rico	30+

Country	Approximate Number of Thermo Fisher Scientific Employees
Worldwide	100,000+

### 5.2 Training

Is there a process by which training needs are assessed for relevant roles or positions?	Yes
Is completed training evaluated and approved?	Yes
Are written training records maintained for employees?	Yes
Are all employees required to undertake annual business ethics training?	Yes

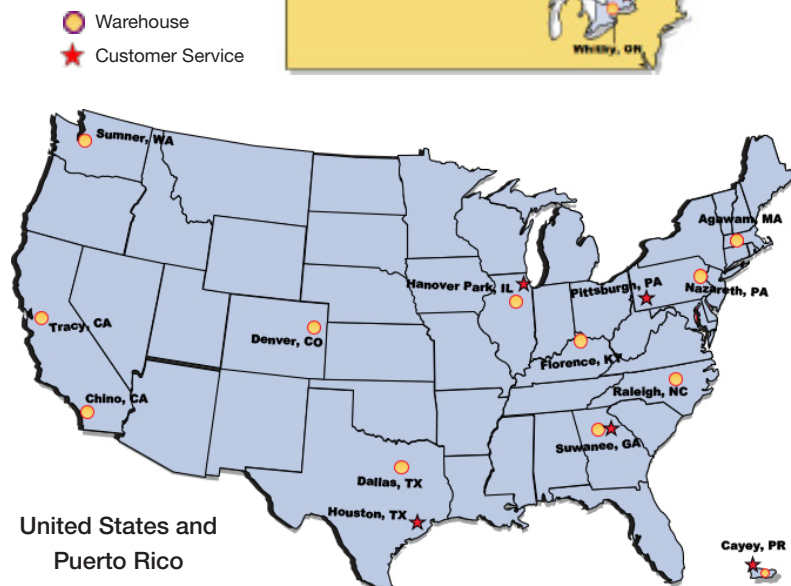
### 5.3 Social Information

Do you ensure that you comply with all applicable laws and standards concerning employee wages and benefits?	Yes
Do you ensure that you comply with all applicable laws and standards regarding employees' working hours, overtime, holidays, and time off?	Yes
Do you actively take steps to ensure that you do not employ under-age labor or forced labor as described in the International Labor Organization conventions?	Yes
Do you operate your business on the basis of equal opportunity and non-discrimination, whether by race, color, religion, sex, age, nationality, or ethnicity?	Yes

## 6. Logistics

The Fisher Scientific channel holds inventory in 14 strategically located distribution networks in North America and Puerto Rico. We have approximately 2,100,000 square feet of full-service warehousing that handles more than 13 million lines annually. Inventory levels at location warehouses are adjustable for specific items to ensure prompt delivery, which offers flexibility in the supply chain. We use a mix of Fisher Scientific fleets plus multi-modal/multicarrier networks to deliver to our customers. Our integrated logistics networks provide distinctive supply-chain services that are tailored to specific market needs.

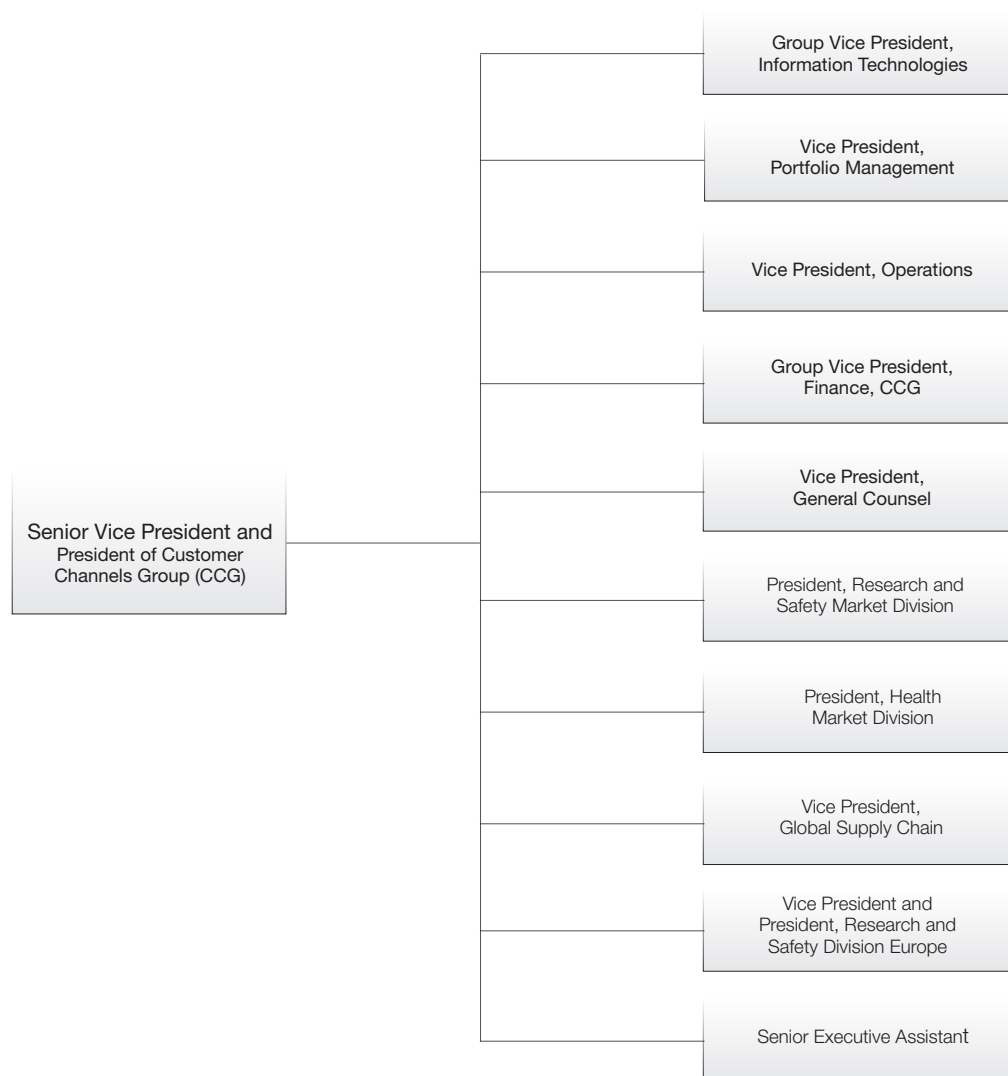
Location	Warehouse	Customer Service
Agawam, Massachusetts	•	
Cayey, Puerto Rico	•	•
Chino, California	•	
Denver, Colorado	•	
Edmonton, Alberta, Canada	•	
Florence, Kentucky	•	
Sumner, Washington	•	
Hanover Park, Illinois	•	•
Dallas, Texas	•	
Houston, Texas		•
Nazareth, Pennsylvania	•	
Ottawa, Ontario, Canada		•
Raleigh, North Carolina	•	
Tracy, California	•	
Suwanee (Atlanta), Georgia		•
Suwanee, Georgia	•	
Whitby, Ontario, Canada	•	



Western Region	Dallas, TX	Sumner, WA	Denver, CO	Tracy, CA	Hanover Park, IL	Chino, CA
Warehouse Type	General, Cold Chain, Chemical	General, Limited Cold Chain, Limited Chemical	General, Cold Chain, Chemical	General, Cold Chain, Chemical	General, Cold Chain, Chemical	General, Cold Chain, Chemical
Warehouse Size	175 ,000	44,862	117,545	225,000	305,000	200,880
Chemical Capabilities	Y	Y	Y	Y	Y	Y
Cold Storage Capabilities	Y	Y	Y	Y	Y	Y
Controlled General Storage Capabilities	Y	Y	Y	Y	Y	Y
24- to 48-Hour Delivery for High-Volume Stock Items	Y	Y	Y	Y	Y	Y
Rush/Next-Day Delivery	Y	Y	Y	Y	Y	Y

Eastern Region	Whitby, ON, CA	Edmonton, AB, CA	Florence, KY	Nazareth, PA	Agawam, MA	Cayey, PR	Raleigh, NC	Suwanee, GA
Warehouse Type	General, Cold Chain, Chemical	General, Cold Chain, Chemical	General, Cold Chain, Chemical	General, Cold Chain, Chemical	General, Limited Cold Chain, Limited Chemical	General, Limited Cold Chain, Limited Chemical	General, Limited Cold Chain, Limited Chemical	General, Cold Chain, Chemical
Warehouse Size	107,000	47,000	169,000	427,000	148,214	18,954	35,118	223,219
Chemical Capabilities	Y	Y	Y	Y	Y	Y	Y	Y
Cold Storage Capabilities	Y	Y	Y	Y	Y	Y	Y	Y
Controlled General Storage Capabilities	Y	N	N	Y	Y	Y	Y	Y
24-48 Hr Delivery for High-Volume Stock Items	Y	Y	Y	Y	Y	Y	Y	Y
Rush/Next-Day Delivery	Y	Y	Y	Y	Y	Y	Y	Y

## Appendix 1: Organization Structure





Certificate US095447.00

The management system of

## Fisher Scientific

6722 Bickmore Avenue  
Chino, CA 91708, United States

has been assessed and certified as meeting the requirements of

## ISO 9001:2015

For the following activities:

**Distribution of laboratory chemicals, reagents, consumables,  
instrumentation and equipment, clinical equipment and supplies,  
and safety equipment and supplies.**

Further clarifications regarding the scope of this certificate and the applicability of  
ISO 9001:2015 requirements may be obtained by consulting the organization.

This certificate is valid from 6 February 2021 until 6 February 2024  
and remains valid subject to satisfactory surveillance audits.  
Recertification audit due a minimum of 60 days before the expiration date.  
Issue 11. Certified since February 2009.

The audit leading to this certificate commenced on 01/10/2020.  
Previous issue certificate validity date was until 06/02/2021.

This is a multi-site certification.  
Additional site details are listed on subsequent pages.

Authorized by:

*Dan Seal*  
Dan Seal

Technical Accreditation Manager, Certification &  
Business Enhancement North America  
SGS North America, Inc.  
201 Route 17 North, Rutherford, NJ 07070, USA  
t (201) 305-3000 f (201) 305-4255 [www.us.sgs.com](http://www.us.sgs.com)

This certificate remains the property of SGS and shall be returned upon request

Page 1 of 3

# SGS



This document is issued by the Company subject to its General Conditions of Certification Services  
available at [www.sgs.com/terms\\_and\\_conditions.htm](http://www.sgs.com/terms_and_conditions.htm). Attention is drawn to the limitations of  
liability, exclusions and jurisdictional issues established therein. The authenticity of this  
document may be verified at <http://www.sgs.com/verified-clients-and-products/verified-clients>  
directly. Any unauthorised alteration, forgery or falsification of the content or appearance of this  
document is unlawful and offenders may be prosecuted to the fullest extent of the law.

Certificate US09/5447.00, continued

SGS

**Fisher Scientific**

**ISO 9001:2015**

Issue 11



Additional facilities:

15982 San Antonio Avenue, Chino, CA 91708, United States

Scope: Distribution of laboratory chemicals, reagents,  
and consumables.

4500 Turnberry Drive, Hanover Park, IL 60133, United States

Scope: Distribution of laboratory chemicals, reagents, consumables,  
instrumentation and equipment, clinical equipment and supplies,  
and safety equipment and supplies.

2775 Horizon Ridge Court, Suwanee, GA 30024, United States

Scope: Distribution of laboratory chemicals, reagents, consumables,  
instrumentation and equipment, clinical equipment and supplies,  
and safety equipment and supplies.



4951 Langdon Road, Suite 170, Dallas, TX 75241, United States

Scope: Distribution of laboratory chemicals, reagents, consumables,  
instrumentation and equipment, clinical equipment and supplies,  
and safety equipment and supplies.

4700 Moline Avenue, Denver, CO 80239, United States

Scope: Distribution of laboratory chemicals, reagents, consumables,  
instrumentation and equipment, clinical equipment and supplies,  
and safety equipment and supplies.



Page 2 of 3

Certificate US09/5447.00, continued

Carretera #1 KM 56.4, Cayay, PR 00737, United States

Scope: Distribution of laboratory chemicals, reagents, consumables,  
instrumentation and equipment, clinical equipment and supplies,  
and safety equipment and supplies.

325 Bowles Road, Agawam, MA 01001, United States

Scope: Distribution of laboratory chemicals, reagents, consumables,  
instrumentation and equipment, clinical equipment and supplies,  
and safety equipment and supplies.

6771 Silver Crest Road, Nazareth, PA 18064, United States

Scope: Distribution of laboratory chemicals, reagents, consumables,  
instrumentation and equipment, clinical equipment and supplies,  
and safety equipment and supplies.

3315 Atlantic Avenue, Raleigh, NC 27604, United States

Scope: Distribution of laboratory chemicals, reagents, consumables,  
instrumentation and equipment, clinical equipment and supplies,  
and safety equipment and supplies.

5902 Hopkins Road, Tracy, CA 95377, United States

Scope: Distribution of laboratory chemicals, reagents, consumables,  
instrumentation and equipment, clinical equipment and supplies,  
and safety equipment and supplies.

14302 24th Street East, Suite B, Sumner, WA 98390, United States

Scope: Distribution of laboratory chemicals, reagents, consumables,  
instrumentation and equipment, clinical equipment and supplies,  
and safety equipment and supplies.

SGS



This document is issued by the Company subject to its General Conditions of Certification Services  
accessible at [www.sgscertification.com](http://www.sgscertification.com) and, furthermore, this. Attention is drawn to the limitations of  
validity, instrumentation and jurisdictional scope established therein. The validity of this  
document may be verified at <http://www.sgscertification.com> and production of the same  
always, being unaltered, original, legible or intelligible of the content or appearance of this  
document is unlawful and therefore may be prosecuted to the fullest extent of the law.

Page 3 of 3



Certificate US181827238.00

The management system of

## Fisher Scientific

112 Colonnade Road  
Ottawa, ON K2E 7L6, Canada

has been assessed and certified as meeting the requirements of

## ISO 9001:2015

For the following activities:

**In-house sales, procurement and distribution of medical examination gloves, chemicals/reagents and laboratory equipment/supplies, and clinical equipment, safety equipment, and related supplies, as well as equipment service, repair and calibration.**

Further clarifications regarding the scope of this certificate and the applicability of ISO 9001:2015 requirements may be obtained by consulting this organization.

This certificate is valid from 10 January 2021 until 10 January 2024 and remains valid subject to satisfactory surveillance audits. Recertification audit due a minimum of 60 days before the expiration date. Issue 3. Certified since January 2021.

The audit leading to this certificate commenced on 16/10/2020. Previous issue certificate validity date was until 10/01/2021.

This is a multi-site certification. Additional site details are listed on subsequent pages.

Authorized by:

*Don Seal*  
Don Seal  
Technical Accreditation Manager, Certification & Business Enhancement North America  
SGS North America, Inc.  
201 Route 17 North, Rutherford, NJ 07070, USA  
t (201) 308-3000 • f (201) 935-4565 • [www.sgs.com](http://www.sgs.com)

This certificate remains the property of SGS and shall be returned upon request.

Page 1 of 2




The document is bound to the Company subject to its General Conditions of Certification Services accessible at [www.sgs.com/terms](http://www.sgs.com/terms) and conditions the Attention to draw up the features of specific international and professional rules established therein. The authenticity of this

This document is a Web version of SGS certificate for electronic use exclusively. It shall only be available by clicking on SGS Certification Mark which has been posted on Your website. It shall not be printed in any way.





Certificate US18/81827238.00, continued

SGS

**Fisher Scientific**

**ISO 9001:2015**



Issue 3

Additional facilities

112 Colonnade Road, Ottawa, ON K2E 7L6, Canada

Scope: In-house sales, order entry and procurement of medical examination gloves, chemicals/reagents and laboratory equipment/supplies, and clinical equipment, safety equipment, and related supplies, as well as metrology/equipment service, repair and calibration.

Markham ULS

145 Renfrew Drive, Suite 119, Markham, ON L3R 9R6, Canada

Scope: Equipment services and calibration

Montreal ULS

3410 rue Griffith, St-Laurent, QC H4T 1A7, Canada

Scope: Equipment services and calibration

Edmonton Distribution & ULS

10720 178 St, Edmonton, ALT5S 1J3, Canada

Scope: Distribution warehouse, and equipment services and calibration

Whitby Distribution

111 Scotia Court, Whitby, ON L1N 6J6, Canada

Scope: Distribution warehouse, returns and CSA testing of equipment



This document is issued by the Company subject to its General Conditions of Certification Services, accessible at [www.sgs.com](http://www.sgs.com), and conditions with Addendums direct to the institutions of liability, indemnification and professional responsibility. The authority of the certification is based on the certified company's responsibility and compliance with the standards of the certification body.

This document is a Web version of SGS certificate for electronic use exclusively. It shall only be available by clicking on SGS Certification Mark which has been posted on Your website. It shall not be printed in anyway.

Page 2 of 2

Certificate US04/61166

SGS

The management system of

## Fisher Scientific

112 Colonnade Road  
Ottawa, ON K2E 7L6, Canada

has been assessed and certified as meeting the requirements of

**ISO 13485:2016**  
**EN ISO 13485:2016**

For the following activities:

**Distribution of Non-sterile Fisherbrand Medical Examination Gloves**

This certificate is valid from 23 December 2019 until 23 December 2022  
and remains valid subject to satisfactory surveillance audits,  
Re certification audit due before 20 December 2022.  
Issue 9. Certified since 1 March 2004.

This is a multi-site certification.  
Additional site details are listed on the subsequent page.

Authorized by

SGS United Kingdom Ltd  
Rosemore Business Park, Ellesmere Port, Cheshire CH65 3EN UK  
t +44 (0)151 350-6666 f +44 (0)151 350-6600 [www.sgs.com](http://www.sgs.com)

HC SGS 13485 2016 0118 M2

Page 1 of 2



This document is issued by the Company subject to its General Conditions of Certification Services accessible at [www.sgs.com/terms\\_and\\_conditions.htm](http://www.sgs.com/terms_and_conditions.htm). Attention is drawn to the limitations of liability, indemnification and jurisdictional issues established therein. The authenticity of this document may be verified at <http://www.sgs.com/certified-clients-and-products/certified-clients-directory>. Any unauthorized alteration, forgery or falsification of the content or appearance of this document is unlawful and offenders may be prosecuted to the fullest extent of the law.



Certificate US04/61166, continued

SGS

**Fisher Scientific**  
**ISO 13485:2016**  
**EN ISO 13485:2016**



Issue 9

Detailed scope (applicable to all sites):

**Distribution of Non-sterile Fisherbrand Medical Examination Gloves**

Additional facilities:

111 Scotia Court, Whitby, ON L1N 6J6, Canada  
10720 178 St, Edmonton, AB T5S 1J3, Canada



Page 2 of 2

This document is issued by the Company subject to its General Conditions of Certification Services accessible at [www.sgs.com/terms\\_and\\_conditions.htm](http://www.sgs.com/terms_and_conditions.htm). Attention is drawn to the limitations of liability, indemnification and jurisdictional issues established therein. The authenticity of this document may be verified at <http://www.sgs.com/certified-clients-and-products/verified-client-directory>. Any unauthorized alteration, forgery or falsification of the content or appearance of this document is unlawful and offenders may be prosecuted to the fullest extent of the law.

## Appendix 3: Form W-9

<b>Form W-9</b> (Rev. October 2019) Department of the Treasury Internal Revenue Service	<b>Request for Taxpayer Identification Number and Certification</b> ▶ Go to <a href="https://www.irs.gov/FormW9">www.irs.gov/FormW9</a> for instructions and the latest information.	Give Form to the requester. Do not send to the IRS.																																																						
<b>1 Name (as shown on your income tax return). Name is required on this line; do not leave this line blank.</b> Fisher Scientific Company, LLC																																																								
<b>2 Business name/disregarded entity name, if different from above</b> (Leave blank)																																																								
<b>3 Check appropriate box for federal tax classification of the person whose name is entered on line 1. Check only one of the following seven boxes.</b> <div style="display: flex; justify-content: space-between;"> <div style="width: 60%;"> <input type="checkbox"/> Individual sole proprietor or single-member LLC  <input checked="" type="checkbox"/> Limited liability company. Enter the tax classification [D-C corporation, S-C corporation, P-Partnership] ▶ <u>C</u>  <small>NOTE: Check the appropriate box in the line above for the tax classification of the single-member owner. Do not check LLC if the LLC is classified as a single-member LLC that is disregarded from the owner unless the owner of the LLC is another LLC that is not disregarded from the owner for U.S. federal tax purposes. Otherwise, a single-member LLC that is disregarded from the owner should check the appropriate box for the tax classification of its owner.</small>  <input type="checkbox"/> Other (see instructions) ▶         </div> <div style="width: 35%;"> <b>4 Exemptions (codes apply only to certain entities, not individuals; see instructions on page 2):</b>          Exempt payee code (if any) <u>5</u>          Exemption from FATCA reporting code (if any) <u>E</u>  <small>(Apply to accounts maintained outside the U.S.)</small> </div> </div>																																																								
<b>5 Address (number, street, and apt. or suite no.) See instructions.</b> 500 Industry Drive		Requestor's name and address (optional)																																																						
<b>6 City, state, and ZIP code</b> Pittsburgh, PA 15275																																																								
<b>7 List account number(s) here (optional)</b>																																																								
<b>Part I Taxpayer Identification Number (TIN)</b> Enter your TIN in the appropriate box. The TIN provided must match the name given on line 1 to avoid backup withholding. For individuals, this is generally your social security number (SSN). However, for a resident alien, sole proprietor, or disregarded entity, see the instructions for Part I, later. For other entities, it is your employer identification number (EIN). If you do not have a number, see <i>How to get a TIN</i> , later. Note: If the account is in more than one name, see the instructions for line 1. Also see <i>What Name and Number To Give the Requestor</i> for guidelines on whose number to enter.																																																								
<table border="1" style="width: 100%; border-collapse: collapse;"> <tr> <td colspan="9" style="text-align: center;">Social security number</td> </tr> <tr> <td style="width: 20px; height: 20px;"></td> <td style="width: 20px; height: 20px;"></td> <td style="width: 20px; height: 20px;"></td> <td style="width: 20px; height: 20px;"></td> <td style="width: 20px; height: 20px;"></td> <td style="width: 20px; height: 20px;"></td> <td style="width: 20px; height: 20px;"></td> <td style="width: 20px; height: 20px;"></td> <td style="width: 20px; height: 20px;"></td> </tr> <tr> <td colspan="9" style="text-align: center;">OR</td> </tr> <tr> <td colspan="9" style="text-align: center;">Employer identification number</td> </tr> <tr> <td style="width: 20px; height: 20px;"></td> <td style="width: 20px; height: 20px;"></td> <td style="width: 20px; height: 20px;"></td> <td style="width: 20px; height: 20px;"></td> <td style="width: 20px; height: 20px;"></td> <td style="width: 20px; height: 20px;"></td> <td style="width: 20px; height: 20px;"></td> <td style="width: 20px; height: 20px;"></td> <td style="width: 20px; height: 20px;"></td> </tr> <tr> <td style="text-align: center;">2</td> <td style="text-align: center;">3</td> <td style="text-align: center;">-</td> <td style="text-align: center;">2</td> <td style="text-align: center;">0</td> <td style="text-align: center;">4</td> <td style="text-align: center;">2</td> <td style="text-align: center;">7</td> <td style="text-align: center;">3</td> </tr> </table>			Social security number																		OR									Employer identification number																		2	3	-	2	0	4	2	7	3
Social security number																																																								
OR																																																								
Employer identification number																																																								
2	3	-	2	0	4	2	7	3																																																
<b>Part II Certification</b> Under penalties of perjury, I certify that: 1. The number shown on this form is my correct taxpayer identification number (or I am waiting for a number to be issued to me); and 2. I am not subject to backup withholding because: (a) I am exempt from backup withholding, or (b) I have not been notified by the Internal Revenue Service (IRS) that I am subject to backup withholding as a result of a failure to report all interest or dividends, or (c) the IRS has notified me that I am no longer subject to backup withholding; and 3. I am a U.S. citizen or other U.S. person (defined below); and 4. The FATCA code(s) entered on this form (if any) indicating that I am exempt from FATCA reporting is correct. Certification instructions: You must cross out item 2 above if you have been notified by the IRS that you are currently subject to backup withholding because you have failed to report all interest and dividends on your tax return. For real estate transactions, item 2 does not apply. For mortgage interest paid, acquisition or abandonment of secured property, cancellation of debt, contributions to an individual retirement arrangement (IRA), and generally, payments other than interest and dividends, you are not required to sign the certification, but you must provide your correct TIN. See the instructions for Part II, later.																																																								
<b>Sign Here</b> Signature of U.S. person ▶ <i>[Signature]</i> Date ▶ <u>1/1/2022</u>																																																								
<b>General Instructions</b> Section references are to the Internal Revenue Code unless otherwise noted. Future developments. For the latest information about developments related to Form W-9 and its instructions, such as legislation enacted after they were published, go to <a href="https://www.irs.gov/FormW9">www.irs.gov/FormW9</a> . <b>Purpose of Form</b> An individual or entity (Form W-9 requester) who is required to file an information return with the IRS must obtain your correct taxpayer identification number (TIN) which may be your social security number (SSN), individual taxpayer identification number (ITIN), adoption taxpayer identification number (ATIN), or employer identification number (EIN), to report on an information return the amount paid to you, or other amount reportable on an information return. Examples of information returns include, but are not limited to, the following: • Form 1099-DIV (dividends, including those from stocks or mutual funds) • Form 1099-MISC (various types of income, prizes, awards, or gross proceeds) • Form 1099-B (stock or mutual fund sales and certain other transactions by brokers) • Form 1099-INT (interest from real estate transactions) • Form 1099-K (merchant card and third party network transactions) • Form 1098 (home mortgage interest), 1098-E (student loan interest), 1098-T (tuition) • Form 1099-C (cancelled debt) • Form 1099-A (acquisition or abandonment of secured property) Use Form W-9 only if you are a U.S. person (including a resident alien). To provide your correct TIN. If you do not return Form W-9 to the requester with a TIN, you might be subject to backup withholding. See <i>What is backup withholding</i> , later.																																																								