

Dear Valued Customer,

THANK YOU FOR YOUR INTEREST IN DOING BUSINESS WITH FISHER SCIENTIFIC.

Fisher Scientific represents a one-stop source and choice for a family of global product and service brands comprising a comprehensive range of laboratory equipment, chemicals, instruments, biological products, and consumable supplies. Fisher Scientific's extensive list of exclusive alliances with major manufacturers, as well as our own brand of Fisherbrand™ products, allows us to give our customers easy access to the products that are most in demand – all from one supplier.

We regularly receive inquiries from customers requesting more information about our business and our capabilities, and in an effort to respond to those questions in the most efficient manner, we have developed this "Self-Assessment" document as an easy and convenient way of providing our customers with information.

If you have further questions concerning the capabilities of Fisher Scientific in North America, please do not hesitate to contact our customer service teams who will be able to assist you further

Lisa V. Witte

1. Introduction

The Fisher Scientific brand offers convenient access to the most comprehensive offering of products and services to allow customers in scientific research, safety, healthcare, and education to increase productivity and efficiency. Through this extensive global channel, we provide a complete portfolio of laboratory equipment, chemicals, supplies, and services. We are aligned across North America and Europe to deliver a consistent service to our customers. Our regional structure includes sales offices and distribution centers that are strategically located to provide prompt, responsive delivery to all our customers.

Our company's website is a dynamic, fully interactive web catalog that provides real-time stock availability and a considerable range of customer oriented features. This is supported by a series of paper catalogs covering the entire breadth of general laboratory activity

2. General Information

2.1 Company Information

Fisher Scientific has multiple sites across North America. Please refer to the table below for more information.

Country	City / State / Province	Company Name	Business Address	Contact Information	Capabilities
United States (Western Region)	Chino, California	Fisher Scientific Company L.L.C.	6722 Bickmore Ave Chino, CA 91708	Tel: 800-766-7000 Fax: 800-926-1166 Email: cs.webemail@thermofisher.com	Distribution Center
	Santa Clara, California	Fisher Scientific Company L.L.C.	700 Laurelwood Road Santa Clara, CA 95054	Tel: 800-766-7000 Fax: 800-926-1166 Email: cs.webemail@thermofisher.com	Distribution Center
	Denver, Colorado	Fisher Scientific Company L.L.C.	4700 Moline Avenue Denver, CO 80239	Tel: 800-766-7000 Fax: 800-926-1166 Email: cs.webemail@thermofisher.com	Distribution Center
	Kapoli, Hawaii	Fisher Scientific Company L.L.C.	91-240 Kalaeloa Blvd Kapolei, HI 96707	Tel: 800-766-7000 Fax: 800-926-1166 Email: cs.webemail@thermofisher.com	Distribution Center
	Hanover Park, Illinois	Fisher Scientific Company L.L.C.	4500 Turnberry Drive Hanover Park, IL 60133	Tel: 800-766-7000 Fax: 800-926-1166 Email: cs.webemail@thermofisher.com	Call Center Distribution Center
	Houston, Texas	Fisher Scientific Company L.L.C.	9999 Veterans Memorial Dr. Houston, TX 77038	Tel: 800-766-7000 Fax: 800-926-1166 Email: cs.webemail@thermofisher.com	Call Center Distribution Center
	Federal Way, Washington	Fisher Scientific Company L.L.C.	822 South 333rd Street Federal Way, WA 98003	Tel: 800-766-7000 Fax: 800-926-1166 Email: cs.webemail@thermofisher.com	Distribution Center

Country	City / State / Province	Company Name	Business Address	Contact Information	Capabilities
United States (Eastern Region)	Suwanee, Georgia	Fisher Scientific Company L.L.C.	2775 Horizon Ridge Court Suwanee, GA 30024	Tel: 800-766-7000 Fax: 800-926-1166 Email: cs.webemail@thermofisher.com	Distribution Center
	Suwanee, Georgia	Fisher Scientific Company L.L.C.	3970 Johns Creek Ct Suwanee, GA 30024	Tel: 800-766-7000 Fax: 800-926-1166 Email: cs.webemail@thermofisher.com	Call Center Distribution Center
	Florence, Kentucky	Fisher Scientific Company L.L.C.	7383 Empire Drive, Suite A Florence, KY 40142	Tel: 800-766-7000 Fax: 800-926-1166 Email: cs.webemail@thermofisher.com	Distribution Center
	Agawam, Massachusetts	Fisher Scientific Company L.L.C.	300 Industry Drive Pittsburgh, PA 15275	Tel: 800-766-7000 Fax: 800-926-1166 Email: cs.webemail@thermofisher.com	Distribution Center
	Raleigh, North Carolina	Fisher Scientific Company L.L.C.	300 Industry Drive Pittsburgh, PA 15275	Tel: 800-766-7000 Fax: 800-926-1166 Email: cs.webemail@thermofisher.com	Distribution Center
	Nazareth, Pennsylvania	Fisher Scientific Company L.L.C.	300 Industry Drive Pittsburgh, PA 15275	Tel: 800-766-7000 Fax: 800-926-1166 Email: cs.webemail@thermofisher.com	Distribution Center
	Pittsburgh, Pennsylvania	Fisher Scientific Company L.L.C.	300 Industry Drive Pittsburgh, PA 15275	Tel: 800-766-7000 Fax: 800-926-1166 Email: cs.webemail@thermofisher.com	Corporate Office
Canada	Ottawa, Ontario	Fisher Scientific Canada Holdings	112 Colonnade Road Ottawa, ON K2E 7L6	Tel: 800-234-7437 Fax: 800-463-2996 Email: help@fishersci.ca	Customer Service
	Whitby, Ontario	Fisher Scientific Canada Holdings	111 Scotia Court, Whitby, ON L1N 6J6	Tel: 800-234-7437 Fax: 800-463-2996 Email: help@fishersci.ca	Distribution Center
	Edmonton, Alberta	Fisher Scientific Canada Holdings	10720-178 Street Edmonton, AL T5S 1J3	Tel: 800-234-7437 Fax: 800-463-2996 Email: help@fishersci.ca	Distribution Center
Puerto Rico	Cayey, PR	Fisher Scientific Company L.L.C.	Carreters #1 Km. 56.4 Barrio Montellano Cayey, PR 00737-8500	Tel: 787-535-3104 Fax: 787-738-5999 Email: whs.pto@thermofisher.com	Call Center Distribution Center

2.2 Phone & Email Contact Information

Department	Telephone Number	Fax Number
Customer Service	800-766-7000	800-926-1166
Research/General	800-766-7000	800-926-1166
Healthcare	800-640-0640	800-290-0290
Safety	800-772-6733	800-772-7702
Accounts Payable	800-865-3839	412-249-2187
Accounts Receivable	724-517-1500	724-517-2071

If you need additional information, please contact the QA team via email at: customerforms.ccg@thermofisher.com.

Department	Email Address
Customer Service	cs.webemail@thermofisher.com
Fax Orders	fs.order@thermofisher.com
Request a Quote	cs.quotes@thermofisher.com
Tax Exemption / W9 Fisher Business License Information	cs.tax@thermofisher.com
Military Orders / Municipal Orders Quotes / Government Contract Orders	cso.cat@thermofisher.com
MSDS Requests	EMSDS.RA@thermofisher.com
Import/Export Group	IMEX@thermofisher.com
Regulatory Group	RegulatoryAffairs@thermofisher.com
Quality Group	QA.CCG@Thermofisher.com

2.3 Parent Company Information

Thermo Fisher Scientific Inc. is the world leader in serving science, with revenues of approximately \$17 billion and approximately 50,000 employees in 50 countries. Our mission is to enable customers to make the world healthier, cleaner and safer. We help our customers accelerate life sciences research; solve complex analytical challenges, improve patient diagnostics and increase laboratory productivity. Through our premier brands – Thermo Scientific, Applied Biosystems, Invitrogen, Fisher Scientific and Unity Lab Services – we offer an unmatched combination of innovative technologies, purchasing convenience and comprehensive support. Thermo Fisher Scientific is a public company, traded on the New York stock exchange (NYSE: TMO). Its registered office address is 81 Wyman Street, Waltham, MA 02451 USA. More information about Thermo Fisher Scientific is available at www.thermofisher.com.

2.4 Products / Services provided by Fisher Scientific

This self-assessment form applies to the distribution of the laboratory and research products, equipment, chemicals, consumables and reagents that are available from the Fisher Scientific portfolio. Fisher Scientific is not a manufacturer of products and acts as a distributor only.

2.5 Organization Chart for Fisher Scientific

Please see Appendix 1

2.6 Financial Information

Legal Entity / Address	Fisher Scientific Company L.L.C. is a Delaware limited liability company with a principal place of business at 300 Industry Drive, Pittsburgh, PA 15275. Fisher Scientific Company L.L.C. is a wholly-owned subsidiary of Fisher Scientific International L.L.C.		
Parent Company / Address	Fisher Scientific International L.L.C. is a Delaware limited liability company with a principal place of business at 81 Wyman Street, Waltham, Massachusetts 02454-9046. Fisher Scientific International L.L.C. is a wholly-owned subsidiary of Thermo Fisher Scientific Inc. Thermo Fisher Scientific Inc. is a Delaware corporation with a principal place of business at 81 Wyman Street, P.O. Box 9046, Waltham, Massachusetts, 02454-9046. Thermo Fisher Scientific Inc. is publicly traded on the New York Stock Exchange under the symbol "TMO."		
Legal Entity Formed	1998		
Formation Date of Fisher Scientific	January 8, 1998		
Year Company Founded	1902		
State of Formation	Delaware		
Cage Codes (also registered with CCR and ORCA)	Pittsburgh	22527	Suwanee 8E930
	Hanover Park	5E871	Tampa 1VP93
	Houston	1K925	Puerto Rico 1J7C3
Products Provided	Fisher Scientific is a distributor of laboratory chemicals, reagents, consumables, instrumentation and equipment, clinical equipment and supplies, and safety equipment and supplies.		
Tax ID#	23-2942737 Fisher Scientific Company L.L.C.	02-0451017 Fisher Scientific International L.L.C.	
DUNS # and Rating	5A2	00-4321519 Fisher Scientific Company L.L.C.	55-744-8065 Fisher Scientific International L.L.C.
DUNS	SIC	NAIC	
	2819	325998	Misc. Chemical Product and Preparation Mfg.
	2531	337127	Institutional Furniture Manufacturing
	5049	423490	Wholesale Trade of Professional Equipment
SIC/NAICS/UNSPSC Codes	5047	423450	Industrial Safety Devices
	5087	423850	Firefighting Equipment and Supplies
	3821	339113	Surgical Appliance and Supplies Manufacturing
	5162	424610	Plastic Materials and Basic Forms and Shapes
		541380	Testing Laboratories
Remittance Addresses (Varies by customer zip code)	Atlanta Customer's zip code starts with: 224-225, 228-253, 255-259, 261-266, 268-399, 403-409, 411-418, 425-426, 669-679, 700-767, 770-778, 780-782, 785-789, 798-807, 816-820, 822-831, 865-885, 974-977, 983-985	P.O. Box 404705	Atlanta, GA 30384-4705
	Boston Customer's zip code starts with: 005-149, 169-214, 216-223, 226-227, 790-794	P.O. Box 3648	Boston, MA 02241-3648
	Chicago Customer's zip code starts with: 150-168, 215, 254, 260, 267, 400-402, 410, 420-424, 427-668, 680-693, 768-769, 779, 783-784, 795-797, 808-815, 821, 832- 863, 894-898, 939-961, 970-973, 978-982, 986-999	13551 Collections Ctr Dr	Chicago, IL 60693
	Los Angeles Customer's zip code starts with: 864, 889-893, 900-938, 967-969	File #50129	Los Angeles, CA 90074-0129
Are your company's contracts compliant with Cost Account Standards?	No		
Does your company have an approved Purchasing Program?	No		
Is Fisher Scientific Company L.L.C. a publicly traded company?	No		
Fisher Scientific Company L.L.C. is a wholly-owned, indirect subsidiary of Thermo Fisher Scientific Inc. ("Thermo Fisher"). Thermo Fisher is publicly traded on the New York Stock Exchange under the symbol TMO.			

2.6 Form W-9 (See Appendix 3)

3. Quality, Environmental & Corporate Social Responsibility

3.1 ISO 9001 Quality Management Certification

Country	State	Fisher Scientific Company	Audit Company	Issue Date	Valid to Date
United States	CA - Chino	Fisher Scientific Company L.L.C.	SGS	02/05/15	02/06/18
	CA - Santa Clara	Fisher Scientific Company L.L.C.	SGS	02/05/15	02/06/18
	CO - Denver	Fisher Scientific Company L.L.C.	SGS	02/05/15	02/06/18
	GA - Suwanee	Fisher Scientific Company L.L.C.	SGS	02/05/15	02/06/18
	GA - Suwanee	Fisher Scientific Company L.L.C.	SGS	02/05/15	02/06/18
	HI - Kapoli	Fisher Scientific Company L.L.C.	SGS	02/05/15	02/06/18
	IL - Hanover Park	Fisher Scientific Company L.L.C.	SGS	02/05/15	02/06/18
	KY - Florence	Fisher Scientific Company L.L.C.	SGS	02/05/15	02/06/18
	MA - Agawan	Fisher Scientific Company L.L.C.	SGS	02/05/15	02/06/18
	NC - Raleigh	Fisher Scientific Company L.L.C.	SGS	02/05/15	02/06/18
	PA - Nazareth	Fisher Scientific Company L.L.C.	SGS	02/05/15	02/06/18
	PA - Pittsburgh	Fisher Scientific Company L.L.C.	SGS	02/05/15	02/06/18
	TX - Houston	Fisher Scientific Company L.L.C.	SGS	02/05/15	02/06/18
	WA - Federal Way	Fisher Scientific Company L.L.C.	SGS	02/05/15	02/06/18
Canada	Alberta - Edmonton	Fisher Scientific Company	SGS	12/23/13	12/23/16
	Ontario - Ottawa	Fisher Scientific Company	SGS	12/23/13	12/23/16
	Ontario - Whitby	Fisher Scientific Company	SGS	12/23/13	12/23/16
Puerto Rico	Cayey	Fisher Scientific Company L.L.C.	SGS	02/05/15	02/06/18

3.2 ISO 13485 Quality Management Certification

Country	Province	Fisher Scientific Company	Audit Company	Issue Date	Valid to Date
Canada	Alberta - Edmonton	Fisher Scientific Company	SGS	01/31/14	01/31/17
	Ontario - Ottawa	Fisher Scientific Company	SGS	01/31/14	01/31/17
	Ontario - Whitby	Fisher Scientific Company	SGS	01/31/14	01/31/17

3.3 Quality Information

Do you have an established, documented, implemented and maintained Quality Management System?	Yes
Do you have a Quality Manual with documented procedures to support your QMS?	Yes
Do you have a system in place to ensure that only the latest version of procedures or SOPs are used?	Yes
Do you have business and management processes for the regular review of quality performance identifying areas for improvement	Yes
Do you conduct regular internal audits for the purpose of confirming the effectiveness of your quality systems:	Yes
Do you provide employees with training and information on quality matters that impact their work?	Yes
Do you have a documented complaint handling procedure?	Yes
Do you have a formal written process for the management of product recalls?	Yes
Do you have a formal procedure for implementing corrective and preventive actions?	Yes
Does the CAPA process provide for the investigation of the root cause of quality issues and the determination of the corrective action needed to eliminate the root cause?	Yes
Are there processes to ensure that changes to laws and regulations are identified and the quality management system updated accordingly?	Yes

3.4 Environmental Information

Do you have a formal Environmental and Sustainability Policy and Objectives?	Yes
Do you have objectives around reducing waste generation?	Yes
Do you have objectives around energy consumption and your carbon footprint?	Yes
Do you have objectives around reducing water usage and other raw material consumption?	Yes
Do you set environmental objectives and measure performance against them?	Yes
Do you have business and management processes for the regular review of environmental and sustainability performance and identifying areas for improvement:	Yes
Do you conduct regular internal audits for the purpose of confirming the effectiveness of your environmental system?	Yes
Do you provide employees with environmental and sustainability training and information?	Yes

3.5 Business Ethics and Corporate Social Responsibility

Do you have a code of business conduct?	Yes
Do you have a written anti-bribery and corruption policy?	Yes
Do you have a written policy relating to corporate governance and business ethics?	Yes
Do you have a corporate social responsibility program?	Yes
Do you have a policy concerning equality and diversity?	Yes
Do you engage in charitable work or volunteering and/or support employees in similar activities?	Yes

4. Supplier Management

North American Supply chain organization with sub functions leveraging common processes and procedures:

- Distribution – located strategically to provide a high service, low cost model
- Purchasing & Planning – North American planning and execution providing high fill-rates with reduced inventory and dead & excess exposure
- Transportation – Fisher Scientific group, set within a Thermo Fisher corporate structure, enabling maximum carrier leverage

5. Employees and Training

5.1 Fisher Scientific Employees in North America

Country	Approximate Number of Fisher Scientific Employees	Country	Approximate Number of Thermo Fisher Employees
United States	2,500	Worldwide	50,000
Canada	400		
Puerto Rico	30		

5.2 Training

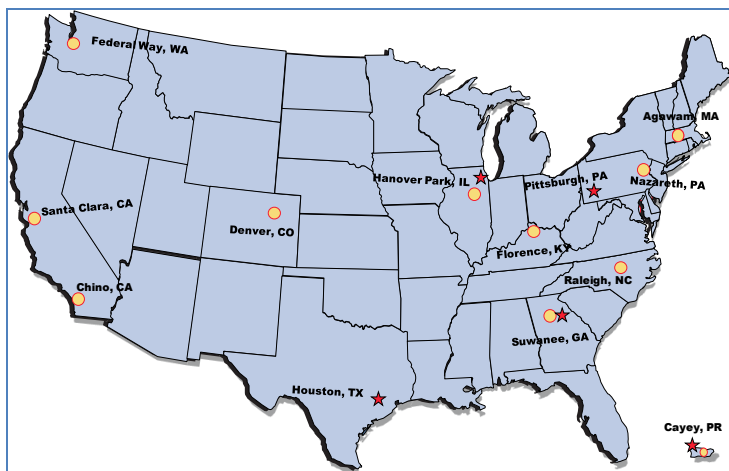
Is there a process by which training needs are assessed for relevant roles or positions?	Yes
Is completed training evaluated and approved?	Yes
Are written training records maintained for employees?	Yes
Are all employees required to undertake annual business ethics training?	Yes

5.3 Social Information

Do you ensure that you comply with all applicable laws and standards concerning employee wage and benefits ?	Yes
Do you ensure that you comply with all applicable laws and standards regarding employee's working hours, overtime, holidays and time-off?	Yes
Do you actively take steps to ensure that you do not employ under-age labor or forced labor as described in the International Labor Organization conventions?	Yes
Do you operate your business on the basis of equal opportunity and non-discrimination, whether by race, color, religion, sex, age, nationality or ethnicity?	Yes

6. Logistics

Fisher Scientific holds inventory in 15 strategically located distribution networks in North America and Puerto Rico. We have approximately 2,100,000 square feet of full service warehousing which handles more than 13 million lines annually. Inventory levels at location warehouses are adjustable for specific items to ensure prompt delivery which will offer flexibility in the supply chain. We use a mix of Fisher fleet plus multi-modal / multicarrier networks to deliver to our customers. Our integrated logistics networks provide distinctive supply-chain services which are tailored to specific market needs.



United States and Puerto Rico

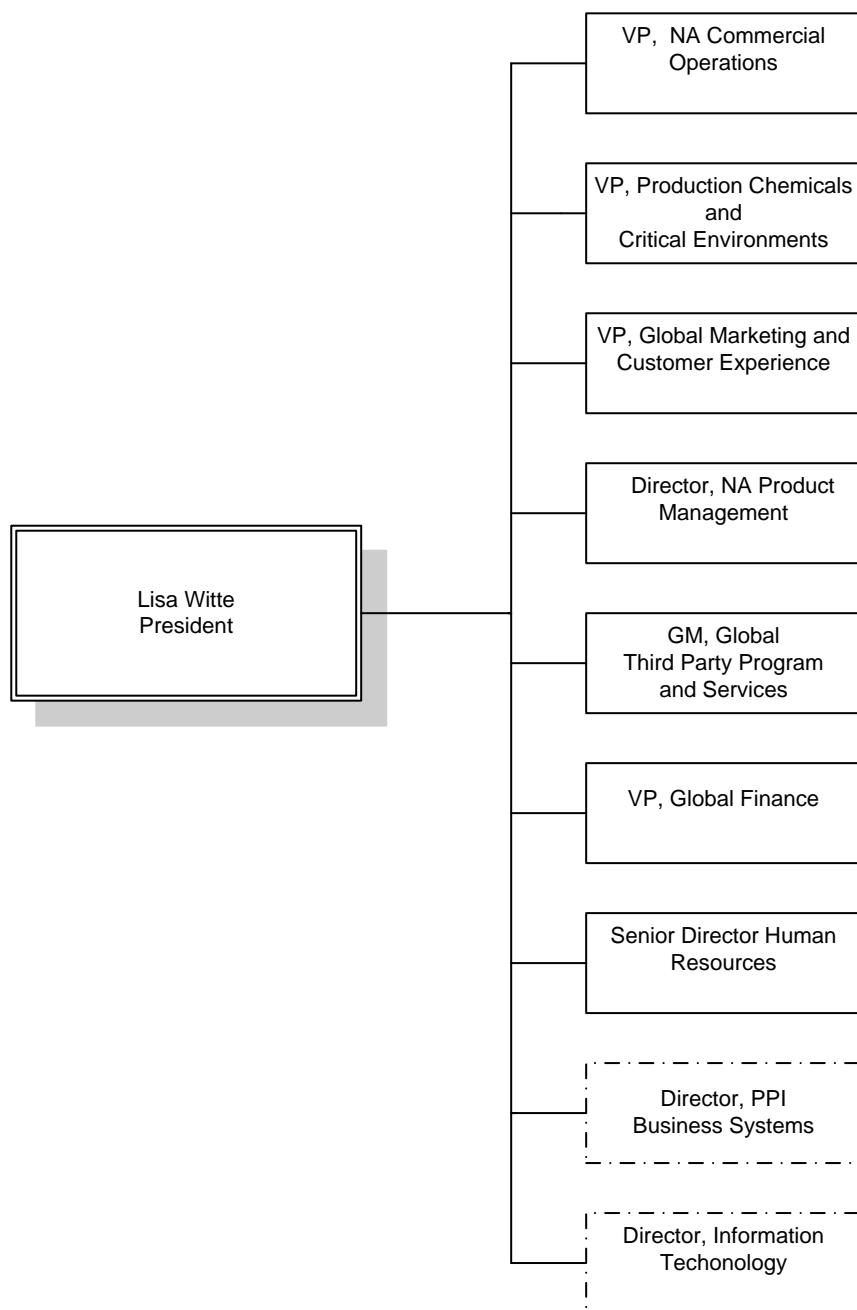


Canada

Location	Warehouse	Customer Service
Agawam, MA	•	
Cayey, Puerto Rico	•	•
Chino, CA	•	
Denver, CO	•	
Edmonton, AB, Canada	•	
Federal Way, WA	•	
Florence, KY	•	
Hanover Park, IL	•	•
Houston, TX	•	•
Nazareth, PA	•	
Ottawa, ON, Canada	•	•
Pittsburgh, PA	•	•
Raleigh, NC	•	
Santa Clara, CA	•	
Suwanee (Atlanta) GA		•
Suwanee, GA	•	

Western Region	Houston TX	Federal Way WA	Denver CO	Kapoleie HI	Hanover Park IL	Chino CA	Santa Clara CA	
Warehouse Type	General, Cold Chain, Chemical	General, Limited Cold Chain, Limited Chemical	General, Cold Chain, Chemical	3rd party General	General, Cold Chain, Chemical	General, Cold Chain, Chemical	General, Cold Chain, Chemical	
Warehouse Size	105,500	25,000	117,545	2,500	305,000	200,880	155,500	
Number of Stocked Items	10,253	3,524	7,200	547	19,751	10,948	9,263	
Annual Lines Handled	813,814	207,253	450,401	28,120	2,026,245	958,402	781,769	
Chemical Capabilities	Y	Y	Y	N	Y	Y	Y	
Cold Storage Capabilities	Y	Y	Y	N	Y	Y	Y	
24-48 Hr Delivery for High Volume Stock Items	Y	Y	Y	Y	Y	Y	Y	
Rush / Next Day Delivery	Y	Y	Y	Y	Y	Y	Y	
Eastern Region	Whitby ON, CA	Edmonton Alberta CA	Florence KY	Nazareth PA	Agawam MA	Cayey PR	Raleigh NC	Suwanee GA
Warehouse Type	General, Cold Chain, Chemical	General, Cold Chain, Chemical	General, Cold Chain, Chemical	General, Cold Chain, Chemical	General, Cold Chain, Chemical	General, Limited Cold Chain, Limited Chemical	General, Limited Cold Chain, Limited Chemical	General, Cold Chain, Chemical
Warehouse Size	108,000	60,000	169,000	427,000	148,214	18,954	35,118	223,219
Number of Stocked Items	9,200	5,800	11,208	23,699	11,274	2,342	1,731	16,394
Annual Lines Handled	915,467	270,990	1,092,032	2,043,820	1,014,103	80,375	74,169	1,652,448
Chemical Capabilities	Y	Y	Y	Y	Y	Y	Y	Y
24-48 Hr Delivery for High Volume Stock Items	Y	Y	Y	Y	Y	Y	Y	Y
Rush / Next Day Delivery	Y	Y	Y	Y	Y	Y	Y	Y

Appendix 1: Organization Structure



Appendix 2: ISO Certificates

Certificate US09/5447.00

The management system of

Fisher Scientific

300 Industry Drive,
Pittsburgh, PA, 15275, United States

has been assessed and certified as meeting the requirements of

ISO 9001:2008

For the following activities

**Distribution of laboratory chemicals, reagents, consumables,
instrumentation and equipment, clinical equipment, clinical equipment
and supplies, and safety equipment and supplies.**

Further clarifications regarding the scope of this certificate and the applicability of
ISO 9001:2008 requirements may be obtained by consulting the organization

This certificate is valid from 6 February 2015 until 6 February 2018 and
remains valid subject to satisfactory surveillance audits.
Recertification audit due a minimum of 60 days before the expiration date.
Issue 6 : 5 February 2015. Certified since 6 February 2009

This is a multi-site certification.
Additional site details are listed on subsequent pages.

Authorized by



John Woodman
Senior Vice President SSC, North America
SGS Systems & Services Certification, a Division of SGS North America, Inc.
201 Route 17 North, Rutherford, NJ 07070, USA
t (201) 508-3000 f (201) 935-4555 www.us.sgs.com

This certificate remains the property of SGS and shall be returned upon request

Page 1 of 2








This document is issued by the Company subject to its General Conditions of Certification Services
accessible at www.sgs.com/terms_and_conditions.htm. Attention is drawn to the limitations of
liability, indemnification and jurisdictional issues established therein. The authenticity of this
document may be verified at <http://www.sgs.com/verify/Our-Company/Certified-Client-Directories/Certified-Client-Directories.aspx>. Any unauthorized alteration, forgery or falsification of
the content or appearance of this document is unlawful and offenders may be prosecuted to the
fullest extent of the law

Certificate US09/5447.00, continued

SGS

Fisher Scientific

ISO 9001:2008



Issue 6 : 5 February 2015

Additional facilities

300 Industry Drive, Pittsburgh, PA, 15275, United States
4500 Turnberry Drive, Hanover Park, IL, 60133, United States
2775 Horizon Ridge Court, Suwanee, GA, 30024, United States
9999 Veterans Memorial Drive, Houston, TX, 77038, United States
700 Laurelwood Road, Santa Clara, CA, 95054, United States
822 South 333rd Street, Federal Way, WA, 98003, United States
4700 Moline Ave, Denver, CO, 80239, United States
6722 Bickmore Ave, Building C, Chino, CA, 91708, United States
15982 San Antonio Ave, Chino, CA 91708, United States
6771 Silver Crest Rd, Nazareth, PA, 18064, United States
7383 Empire Drive, Suite A, Florence, KY, 41042, United States
Carretera #1 KM. 56.4, Bo. Cayey, PR, 00736, United States
325 Bowles Rd, Agawam, MA, 01001, United States



This document is issued by the Company subject to its General Conditions of Certification Services accessible at www.sgs.com/terms_and_conditions.htm. Attention is drawn to the limitations of liability, indemnification and jurisdictional issues established therein. The authenticity of this document may be verified at <http://www.sgs.com/en/Our-Company/Certified-Client-Directories/Certified-Client-Directories.aspx>. Any unauthorized alteration, forgery or falsification of the content or appearance of this document is unlawful and offenders may be prosecuted to the fullest extent of the law.

Page 2 of 2

Certificate US05/63780

SGS

The management system of

Fisher Scientific

112 Colonnade Road,
Ottawa, Ontario, K2E 7L6, Canada

has been assessed and certified as meeting the requirements of

ISO 9001:2008

For the following activities

The scope of registration appears on page 2 of this certificate.

Further clarifications regarding the scope of this certificate and the applicability of ISO 9001:2008 requirements may be obtained by consulting the organisation

This certificate is valid from 23 December 2013 until 23 December 2016 and remains valid subject to satisfactory surveillance audits.

Re certification audit due before 20 December 2016

Issue 4. Certified since 23 December 2004

This is a multi-site certification.
Additional site details are listed on the subsequent page.

Authorised by

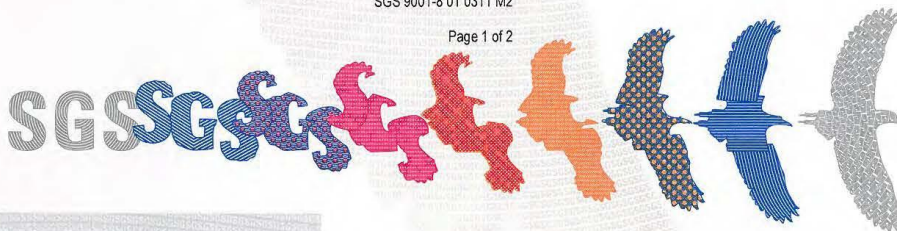


005

SGS United Kingdom Ltd. Systems & Services Certification
Rossmore Business Park, Ellesmere Port, Cheshire, CH65 3EN, UK
t +44 (0)151 350-6666 f +44 (0)151 350-6600 www.sgs.com

SGS 9001-8 01 0311 M2

Page 1 of 2



This document is issued by the Company subject to its General Conditions of Certification Services accessible at www.sgs.com/terms_and_conditions.htm. Attention is drawn to the limitations of liability, indemnification and jurisdictional issues established therein. The authenticity of this document may be verified at <http://www.sgs.com/en/Our-Company/Certified-Client-Directories/Certified-Client-Directories.aspx>. Any unauthorized alteration, forgery or falsification of the content or appearance of this document is unlawful and offenders may be prosecuted to the fullest extent of the law.

Certificate US05/63780, continued

SGS

Fisher Scientific

ISO 9001:2008

Issue 4



Detailed scope

Distribution of chemicals including bioreagents, laboratory, clinical equipment and supplies, safety equipment and supplies, servicing/repair of equipment, and calibration services.

Further Clarifications regarding the scope of this certificate and the applicability of ISO 9001:2008 requirements may be obtained by consulting the organisation

Additional facilities

111 Scotia Court, Whitby, Ontario, L1N 6J6, Canada

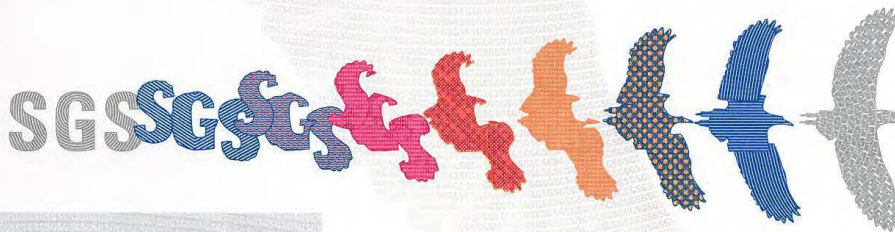
10720 178 St, Edmonton, Alberta, T5S 1J3, Canada

Fisher Scientific dba Unity Lab Services
145 Renfrew Drive, Suite 119, Markham, Ontario, L3R 9R6, Canada

Fisher Scientific dba Unity Lab Services
3410 rue Griffith, St-Laurent, Quebec, H4T 1A7, Canada

Fisher Scientific dba Unity Lab Services
112 Colonnade Road, Ottawa, Ontario, K2E 7L6, Canada

Fisher Scientific dba Unity Lab Services
10720 178 St, Edmonton, Alberta, T5S 1J3, Canada



This document is issued by the Company subject to its General Conditions of Certification Services accessible at www.sgs.com/terms_and_conditions.htm. Attention is drawn to the limitations of liability, indemnification and jurisdictional issue established therein. The authenticity of this document may be verified at <http://www.sgs.com/en/Our-Company/Certified-Client-Directories/Certified-Client-Directories.aspx>. Any unauthorized alteration, forgery or falsification of the content or appearance of this document is unlawful and offenders may be prosecuted to the fullest extent of the law.

Page 2 of 2

Certificate US04/3203

SGS

The management system of

Fisher Scientific

112 Colonnade Road,
Ottawa, Ontario, K2E 7L6, Canada

has been assessed and certified as meeting the requirements of

ISO 13485:2003

For the following activities

**Storage and distribution, manufacture of latex, nitrile, vinyl and other
synthetic examination gloves.**

Effective Date 31 January 2014 Expiry Date 31 January 2017
Re certification audit due before 20 December 2016
Valid subject to satisfactory surveillance audits.
Issue 8. Certified since 1 March 2004

This is a multi-site certification.
Additional site details are listed on the subsequent page.

Authorised by
Jan Saunders – Business Manager

SGS United Kingdom Ltd Systems & Services Certification
Rossmore Business Park Ellesmere Port Cheshire CH65 3EN UK
t +44 (0)151 350-6666 f +44 (0)151 350-6600 www.sgs.com
CMDCAS recognised registrar

SGS 13485 CMDCAS 0911 MS M2

Page 1 of 2



This document is issued by the Company subject to its General Conditions of Certification Services accessible at www.sgs.com/terms_and_conditions.htm. Attention is drawn to the limitations of liability, indemnification and jurisdictional issues established therein. The authenticity of this document may be verified at <http://www.sgs.com/en/Our-Company/Certified-Client-Directories/Certified-Client-Directories.aspx>. Any unauthorized alteration, forgery or falsification of the content or appearance of this document is unlawful and offenders may be prosecuted to the fullest extent of the law.

Certificate US04/3203, continued

SGS

Fisher Scientific

ISO 13485:2003

Issue 8



Additional facilities

111 Scotia Court, Whitby, Ontario, L1N 6J6, Canada

Scope: Storage and distribution of latex, nitrile, vinyl and other synthetic examination gloves.

10720 178 St, Edmonton, Alberta, T5S 1J3, Canada

Scope: Storage and distribution of latex, nitrile, vinyl and other synthetic examination gloves.



This document is issued by the Company subject to its General Conditions of Certification Services accessible at www.sgs.com/terms_and_conditions.htm. Attention is drawn to the limitations of liability, indemnification and jurisdictional issues established therein. The authenticity of this document may be verified at <http://www.sgs.com/en/Our-Company/Certified-Client-Directories/Certified-Client-Directories.aspx>. Any unauthorized alteration, forgery or falsification of the content or appearance of this document is unlawful and offenders may be prosecuted to the fullest extent of the law.

Page 2 of 2

Appendix 3: Form W-9

<p>Form W-9 (Rev. December 2014) Department of the Treasury Internal Revenue Service</p>	<h2 style="margin: 0;">Request for Taxpayer Identification Number and Certification</h2>	<p>Give Form to the requester. Do not send to the IRS.</p>																				
<p>1 Name (as shown on your income tax return). Name is required on this line; do not leave this line blank.</p> <p>FISHER SCIENTIFIC COMPANY, LLC</p>																						
<p>2 Business name/disregarded entity name, if different from above</p>																						
<p>3 Check appropriate box for federal tax classification; check only one of the following seven boxes:</p> <p> <input type="checkbox"/> Individual/sole proprietor or single-member LLC <input type="checkbox"/> C Corporation <input type="checkbox"/> S Corporation <input type="checkbox"/> Partnership <input type="checkbox"/> Trust/estate </p> <p> <input checked="" type="checkbox"/> Limited liability company. Enter the tax classification (C=C corporation, S=S corporation, P=partnership) C </p> <p><small>Note. For a single-member LLC that is disregarded, do not check LLC; check the appropriate box in the line above for the tax classification of the single-member owner.</small></p> <p> <input type="checkbox"/> Other (see instructions) </p>																						
<p>4 Exemptions (codes apply only to certain entities, not individuals; see instructions on page 3):</p> <p>Exempt payee code (if any) 5</p> <p>Exemption from FATCA reporting code (if any) E</p> <p><small>(Applies to accounts maintained outside the U.S.)</small></p>																						
<p>5 Address (number, street, and apt. or suite no.)</p> <p>300 INDUSTRY DRIVE</p>		<p>Requester's name and address (optional)</p>																				
<p>6 City, state, and ZIP code</p> <p>PITTSBURGH, PA 15275</p>																						
<p>7 List account number(s) here (optional)</p>																						
<p>Part I Taxpayer Identification Number (TIN)</p> <p>Enter your TIN in the appropriate box. The TIN provided must match the name given on line 1 to avoid backup withholding. For individuals, this is generally your social security number (SSN). However, for a resident alien, sole proprietor, or disregarded entity, see the Part I instructions on page 3. For other entities, it is your employer identification number (EIN). If you do not have a number, see <i>How to get a TIN</i> on page 3.</p> <p><small>Note. If the account is in more than one name, see the instructions for line 1 and the chart on page 4 for guidelines on whose number to enter.</small></p>																						
<p>Social security number</p> <table border="1" style="width: 100%; border-collapse: collapse;"> <tr> <td style="width: 10%;"> </td> <td style="width: 10%;"> </td> <td style="width: 10%;"> </td> <td style="width: 10%;"> </td> <td style="width: 10%;"> </td> <td style="width: 10%;"> </td> <td style="width: 10%;"> </td> <td style="width: 10%;"> </td> <td style="width: 10%;"> </td> <td style="width: 10%;"> </td> </tr> </table>												<p>or</p> <p>Employer identification number</p> <table border="1" style="width: 100%; border-collapse: collapse;"> <tr> <td style="width: 10%;">2</td> <td style="width: 10%;">3</td> <td style="width: 10%;"> </td> <td style="width: 10%;">2</td> <td style="width: 10%;">9</td> <td style="width: 10%;">4</td> <td style="width: 10%;">2</td> <td style="width: 10%;">7</td> <td style="width: 10%;">3</td> <td style="width: 10%;">7</td> </tr> </table>	2	3		2	9	4	2	7	3	7
2	3		2	9	4	2	7	3	7													
<p>Part II Certification</p> <p>Under penalties of perjury, I certify that:</p> <ol style="list-style-type: none"> The number shown on this form is my correct taxpayer identification number (or I am waiting for a number to be issued to me); and I am not subject to backup withholding because: (a) I am exempt from backup withholding, or (b) I have not been notified by the Internal Revenue Service (IRS) that I am subject to backup withholding as a result of a failure to report all interest or dividends, or (c) the IRS has notified me that I am no longer subject to backup withholding; and I am a U.S. citizen or other U.S. person (defined below); and The FATCA code(s) entered on this form (if any) indicating that I am exempt from FATCA reporting is correct. <p>Certification instructions. You must cross out item 2 above if you have been notified by the IRS that you are currently subject to backup withholding because you have failed to report all interest and dividends on your tax return. For real estate transactions, item 2 does not apply. For mortgage interest paid, acquisition or abandonment of secured property, cancellation of debt, contributions to an individual retirement arrangement (IRA), and generally, payments other than interest and dividends, you are not required to sign the certification, but you must provide your correct TIN. See the instructions on page 3.</p>																						
<p>Sign Here</p>	<p>Signature of U.S. person <i>James B...</i></p>	<p>Date 01/01/2016</p>																				
<p>General Instructions</p> <p>Section references are to the Internal Revenue Code unless otherwise noted.</p> <p>Future developments. Information about developments affecting Form W-9 (such as legislation enacted after we release it) is at www.irs.gov/fw9.</p> <p>Purpose of Form</p> <p>An individual or entity (Form W-9 requester) who is required to file an information return with the IRS must obtain your correct taxpayer identification number (TIN) which may be your social security number (SSN), individual taxpayer identification number (ITIN), adoption taxpayer identification number (ATIN), or employer identification number (EIN), to report on an information return the amount paid to you, or other amount reportable on an information return. Examples of information returns include, but are not limited to, the following:</p> <ul style="list-style-type: none"> Form 1099-INT (interest earned or paid) Form 1099-DIV (dividends, including those from stocks or mutual funds) Form 1099-MISC (various types of income, prizes, awards, or gross proceeds) Form 1099-B (stock or mutual fund sales and certain other transactions by brokers) Form 1099-S (proceeds from real estate transactions) Form 1099-K (merchant card and third party network transactions) 																						
<p>• Form 1098 (home mortgage interest), 1098-E (student loan interest), 1098-T (tuition)</p> <p>• Form 1099-C (canceled debt)</p> <p>• Form 1099-A (acquisition or abandonment of secured property)</p> <p>Use Form W-9 only if you are a U.S. person (including a resident alien), to provide your correct TIN.</p> <p>If you do not return Form W-9 to the requester with a TIN, you might be subject to backup withholding. See <i>What is backup withholding?</i> on page 2.</p> <p>By signing the filled-out form, you:</p> <ol style="list-style-type: none"> Certify that the TIN you are giving is correct (or you are waiting for a number to be issued). Certify that you are not subject to backup withholding, or Claim exemption from backup withholding if you are a U.S. exempt payee. If applicable, you are also certifying that as a U.S. person, your allocable share of any partnership income from a U.S. trade or business is not subject to the withholding tax on foreign partners' share of effectively connected income, and Certify that FATCA code(s) entered on this form (if any) indicating that you are exempt from the FATCA reporting, is correct. See <i>What is FATCA reporting?</i> on page 2 for further information. 																						

Cat. No. 10231X

Form **W-9** (Rev. 12-2014)

November, 2015