



Thermo Scientific Revco® Laboratory Refrigerators and Freezers

Unrivalled cold storage protection for valuable samples and materials



Chromatography
General Purpose
Blood Bank
Plasma
Pharmacy
Enzyme
Refrigerated Incubation

Thermo Scientific Laboratory Refrigerators and Freezers

Chromatography
General Purpose
Blood Bank
Plasma
Pharmacy
Enzyme
Refrigerated Incubation



Unrivalled sample protection

Thermo Scientific Revco refrigerators and freezers provide reliable, dependable performance.

- The IntrLogic™ microprocessor controller, available on all +4°C refrigerators and -20°C or -30°C lab freezers, controls, measures, compares and reports cabinet operation with digital accuracy
- All our refrigerator and freezer cabinets, including space-saving undercounter and slimline models, share design and technology improvements developed through decades of experience

Freezer Operating Temperatures

Operating Range	+1°C to +8°C Auto Defrost	to -20°C Manual Defrost	to -30°C Auto Defrost
General Purpose Refrigerators	•		
Chromatography Refrigerators	•		
Blood Bank Refrigerators	•		
Pharmacy Refrigerators	•		
Refrigerated Incubators	•	•	
General Purpose Freezers		•	•
Plasma Freezers			•
Enzyme Freezers		•	

For critical storage applications, full alarm models with optional temperature recorders are strongly recommended.

Typical Use and Storage Applications

Application	+1°C to +8°C Auto Defrost	to -20°C Manual Defrost	to -30°C Auto Defrost
General Storage	•	•	•
Reagents and Kits	•		
Whole Blood	•		
Plasma			•
Enzymes and Temperature Sensitive Materials		•	
Chromatography Apparatus and Instrumentation	•		
Test Samples	•	•	•
Biologicals	•	•	•
Culture Media	•		
Patient Medication	•		
BOD Protocols	•		
Pre-Freezing		•	•
Vaccines	•	•	•
Shelf Life Testing	•		

CFC-Free Refrigerants, Insulation and Packaging

All our refrigerators and freezers use CFC-free refrigerants, cabinet insulation and packaging.

Product Selection

This catalog is divided into sections according to general product application. Because most controllers allow adjustable setpoints, all temperatures are listed as design operating temperatures and typically represent the lowest or coldest temperature of a temperature range.

Electrical Information

Thermo Scientific Revco refrigerators and freezers are designed to meet UL, CUL, CE and TUV criteria for safety and performance. All connections must comply with local electrical codes.

- Selection charts for each standard model list voltage, rated amperage, recommended circuit breaker size and NEMA (National Electrical Manufacturers' Association, USA) electrical plug information

- Most refrigerators and freezers are supplied with line cord plugs (P) which require corresponding receptacles illustrated on the line cord plug reference chart below
- Site preparation requires availability of the proper receptacle; a dedicated circuit is recommended
- Special voltage selections may be available at extra cost and must be specified when ordering
- For questions regarding site preparation, installation and electrical connection, contact our sales representative

Certification of Calibration

Control, alarm and temperature recording systems are systematically calibrated at the factory for accurate performance. An optional Certificate of Calibration to an NIST (National Institute of Standards and Technology, formerly National Bureau of Standards) traceable instrument includes a Model Number and Serial Number Certificate (single point calibration). Multiple point calibration is also available. Calibration certificates must be requested when ordering; for details contact our sales representatives.



Validation Testing Program

Validation testing services in advance of shipment can accelerate in-house FDA Installation Qualification (IQ) and Operation Qualification (OQ) programs. Validation services include documentation and performance reports, compressor and sub-system component specifications, microprocessor flow diagrams, software specifications and more. For more details, contact our sales representatives.



Performance Data

For detailed performance information such as temperature recovery, power consumption and other model specific operational characteristics, contact our sales representatives.

Ordering Information

Our sales representatives will assist in choosing the proper refrigerator or freezer for your application.

- Each model number is voltage specific. For clarity, please include the voltage of your selected refrigerator or freezer when ordering
- When ordering your refrigerator or freezer, please consider current or future accessory requirements such as temperature recorders, extra shelves and alarm/monitoring systems
- Many accessories are factory installed and must be specified when ordering



Top to bottom: Chromatography refrigerator REC-5004, -30°C freezer ULT-2330 and undercounter refrigerator REL-404.

Line Cord Plug Reference

Models with this code	have this plug	require this receptacle	NEMA Reference	
			Plug	Receptacle
P1			5-15P	5-15R
P2			5-20P	5-20R
P3			5-30P	5-30R
P4			6-15P	6-15R
P5			6-20P	6-20R
P6			6-30P	6-30R
P7			European	

Refrigerators and freezers supplied with line cord plugs (P) require corresponding receptacles illustrated in the Line Cord Plug Reference. Catalog selection charts list each standard model with voltage, rated amperage, recommended circuit breaker size and NEMA electrical plug information.

Thermo Scientific IntrLogic Controller Simplifies Operation, Improves Reliability

Intuitive
Graphics and
Microprocessor
Technology

Setpoint Security

Key operated triple position switch for main power and alarm; locks in temperature and alarm setpoints to minimize setpoint error and prevent tampering

Instrument Grade Components

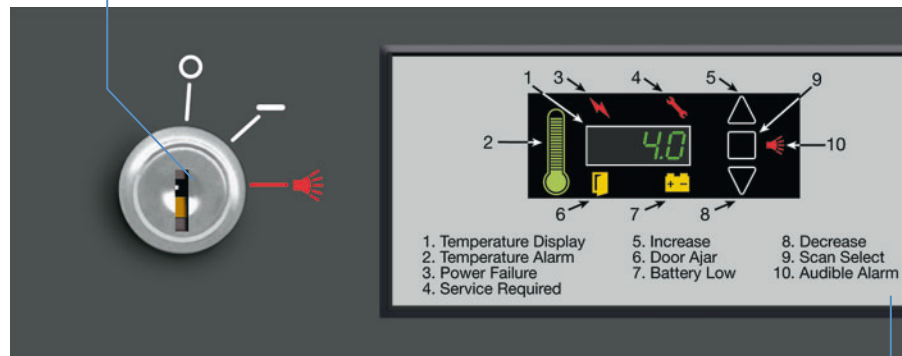
Electronic components and sub-systems are selected for performance and reliability under demanding laboratory conditions

Service Parameters

Touchpad sequence allows override access to control function defaults for troubleshooting functions

Modular Control Design

Self-contained control housing integrated into main control panel for efficient maintenance, as required



IntrLogic control panel is standard on Revco refrigerators and freezers (except BOD models).

Microprocessor-Based Control

IntrLogic microprocessor manages setpoint and actual conditions to provide the highest level of security for the stored product

Automatic Defrost System

Defrost sensor manages automatic defrost cycle (manual defrost models excluded)

IntrLogic Guide

Offers information at-a-glance for all control and display functions

Power Down Mode

During power failure digital display dims to conserve backup battery

Thermo Scientific Revco lab refrigerators and freezers include enhanced digital electronic technology designed to simplify operation and deliver greater accuracy.

- Icon-based controls and displays include graphic references for universal operation
- Setpoint security with key-operated triple-position master switch controls power to all systems for added safety
- A graphic thermometer confirms proper operation at a glance, shows normal, high or low temperature condition; steady green for normal, flashing top bar for overtemperature, flashing bulb for undertemperature
- Auto defrost models feature an advanced defrost sensor which manages the defrost cycle, minimizing trace amounts of frost build-up to maintain refrigeration coil efficiency

IntrLogic Control Alarm Sequence

Event	Audible Alarm	Visual Alarm	Self Corrected Event	Remote Alarm Contacts Activated
Overtemperature	continuous*			yes
Undertemperature	continuous*			yes
Power Loss	continuous*			yes
Door Ajar	delay			no
Low Battery	no			no
Service Required	no			no

Audible and visual warnings for door ajar, low alarm battery, system maintenance and power failure provide immediate status of critical functions. A push-button alarm test verifies sensor continuity, while the battery backup assures system readiness. The enlarged digital display improves visibility, taking the guesswork out of setpoint and performance management.

*Mute will silence audible alarm with 6 minute ring back interval; display remains flashing. Moving triple position key switch to middle position disables alarm and audible and visual warnings.

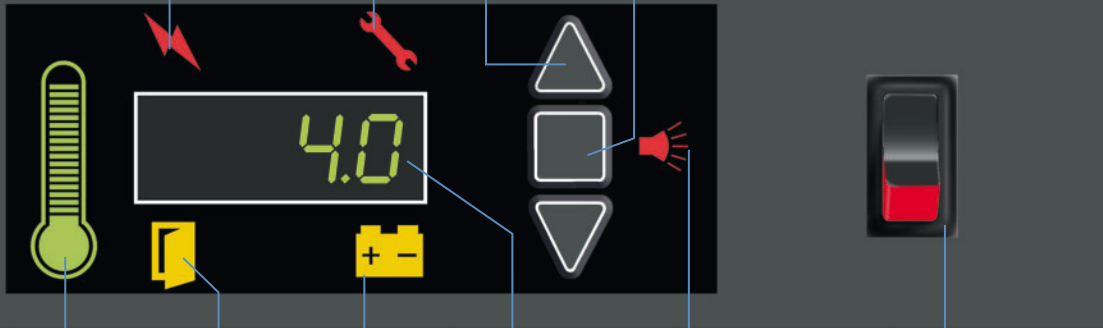
Power Failure Icon
Illuminated when main power is interrupted

Service Required
Illuminated when controller is in programming mode, or if simulated warm or cold conditions fail to occur during alarm test function

Touchpad Data Entry
Increases or decreases setpoint values in programming mode

Touchpad Scan Changes main display; also used to access various programming and service functions (alarm mute, recall 6 minutes)

Alarm Test Pressing "up" and "scan" buttons creates simulated overtemperature and undertemperature condition and activates audible and visual alarms; display flashes momentarily when test is complete



Graphic Thermometer
Easy to view, shows normal, high or low temperature condition; steady green for normal, flashing top bar for overtemperature, flashing bulb for undertemperature

Door Ajar
Illuminated when door is left open and alarm is in "active" mode (not available on 45.8 cu.ft. (1297 L) sliding glass door models)

Battery Backup
Continuous charge provides full alarm function in case of power failure

Low Battery Alarm
Illuminated when the alarm system battery backup charge is low

Digital Display
Indicates cabinet temperature during normal operation, flashes during alarm condition or setpoint adjustment. Displays other values with touchpad sequence

Audible Alarm
Audible and visual indicators are activated in the event of warm, cold or power loss conditions. Mute will silence audible alarm with 6 minute ring back interval; display remains flashing

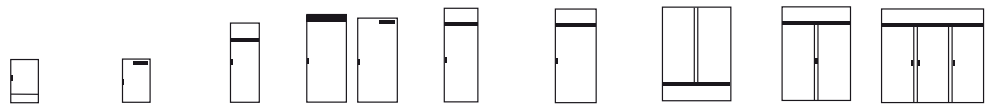
Interior Light Switch
Enables interior lighting system (on applicable models)

Laboratory Quality Cabinet Construction

Our refrigerators and freezers are available in ten sizes, from compact 4.9 cu.ft. (133 L) undercounter models, to spacious, triple-door 78.8 cu.ft. (2231 L) cabinets. All models are built to meet UL, CUL, CE and TUV standards for safety.

- Hermetically sealed refrigeration compressor, air-cooled condenser and automatic condensate removal for auto defrost models
- An efficient, high-capacity air circulation system optimizes top-to-bottom temperature uniformity, accelerates temperature recovery following door openings, and accommodates insertion of warm product
- CFC-free refrigerants, insulation and product packaging
- Depending on model selection, standard or optional shelves, drawers, temperature recorders, cabinet casters and other accessories are available to meet most laboratory needs

Thermo Scientific Revco Laboratory Refrigerator and Freezer Selection Guide



Automatic Defrost Models	Cu.Ft. (L)	4.9 (133)	6.1 (173)	11.5 (326)	20 (566)	23.3 (659)	29.2 (826)	45.8 (1297)	51.1 (1447)	78.8 (2231)
Chromatography Refrigerators						IntrLogic	IntrLogic	IntrLogic	IntrLogic	IntrLogic
General Purpose Lab Refrigerators	IntrLogic			IntrLogic		IntrLogic	IntrLogic	IntrLogic	IntrLogic	IntrLogic
Blood Bank Refrigerators	IntrLogic			IntrLogic		IntrLogic	IntrLogic		IntrLogic	
Pharmacy Refrigerators				IntrLogic		IntrLogic	IntrLogic		IntrLogic	
General Purpose Lab Freezers, -30°C	IntrLogic			IntrLogic		IntrLogic	IntrLogic		IntrLogic	
Plasma Freezers, -30°C	IntrLogic			IntrLogic		IntrLogic	IntrLogic		IntrLogic	
Refrigerated Incubators, Programmable					micro					
Refrigerated Incubators, Non-Programmable			micro		micro					
Manual Defrost Models										
Enzyme Freezer, -20°C						IntrLogic				
General Purpose Freezer, -20°C						IntrLogic				

Remote alarm contacts are included on all models.

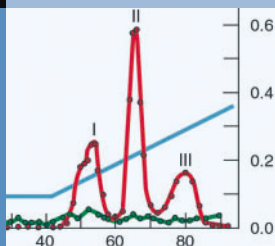
Thermo Scientific Chromatography Refrigerators

Featuring
IntrLogic
Microprocessor
Control

Our Revco chromatography refrigerators are designed for a variety of applications requiring close temperature control, full access to chromatography instrumentation and easy set-up of instrumentation and apparatus within the chamber.



REC-7504 chromatography refrigerator. Casters and glass doors are standard. Shown with optional temperature recorder.



REC series chromatography refrigerators feature the IntrLogic microprocessor control system, positive airflow systems, industrial quality cabinet construction and extra-strength refrigeration compressors selected for industrial, clinical and scientific use.

IntrLogic Microprocessor Control

REC series refrigerators feature enhanced digital electronic technology designed to simplify operation and deliver greater accuracy (see pages 4 and 5).

- Adjustable temperature control, range +1°C to +8°C, factory pre-set to +4°C
- Icon-based controls and displays include graphic references for universal operation
- Setpoint security with key operated triple-position master switch controls power to all systems for added safety
- Audible/visual warnings for over-temperature, undertemperature and power failure, with visual status reports on critical functions

- Graphic thermometer confirms proper operation at a glance, shows normal, high or low temperature condition; steady green for normal, flashing top bar for overtemperature, flashing bulb for undertemperature
- Advanced defrost sensor manages the defrost cycle, minimizing trace amounts of frost build-up to maintain refrigeration coil efficiency
- Enlarged digital display, resolution to within 0.1°C, improves visibility
- Alarm silence, ringback and automatic reset functions
- Push button alarm test verifies sensor continuity
- Battery backup assures control panel function during power failure
- Remote alarm contacts are included on all models

Thermo Scientific Revco Chromatography Refrigerators

Temperature Range: +1°C to +8°C, factory preset to +4°C (auto defrost)

Model No.	Cu.Ft. (L)	Voltage (Hz)	Amps/Breaker (Plug)	Door	Full Shelves	Half Shelves	Int. Dimensions* H x D x W inches (mm)	Ext. Dimensions* H x D x W inches (mm)	Ship Weight lb (kg)
REC-2304A REC-2304D REC-2304V	23.3 (659)	115 (60) 208/230 (60) 230 (50)	9.4/15 (P1) 6.0/15 (P4) 6.0/15 (P7)	single, glass	0	2	58.0 x 29.0 x 24.0 (1470 x 730 x 610)	79.1 x 36.2 x 28.0 (2010 x 920 x 720)	425 (193)
REC-3004A REC-3004D REC-3004V	29.2 (82.6)	115 (60) 208/230 (60) 230 (50)	9.4/15 (P1) 6.0/15 (P4) 6.0/15 (P7)	single, glass	0	2	58.0 x 29.0 x 30.0 (1470 x 730 x 760)	79.1 x 36.2 x 34.0 (2010 x 920 x 870)	435 (197)
REC-4504A REC-4504D REC-4504V	45.8 (1297)	115 (60) 208/230 (60) 230 (50)	15.0/20 (P2) 8.5/15 (P4) 8.5/15 (P7)	double, sliding, glass	4	2	58.0 x 26.0 x 52.5 (1470 x 660 x 1330)	79.1 x 33.0 x 56.5 (2010 x 840 x 1440)	670 (304)
REC-5004A REC-5004D REC-5004V	51.1 (1447)	115 (60) 208/230 (60) 230 (50)	15.0/20 (P2) 8.5/15 (P4) 8.5/15 (P7)	double, glass	4	2	58.0 x 29.0 x 52.5 (1470 x 730 x 1330)	79.1 x 36.2 x 56.5 (2010 x 920 x 1440)	580 (263)
REC-7504A REC-7504D REC-7504V	78.8 (2231)	115 (60) 208/230 (60) 230 (50)	16.0/20 (P2) 10.5/15 (P4) 10.5/15 (P7)	triple, glass	8	2	58.0 x 29.0 x 81.0 (1470 x 730 x 2050)	79.1 x 36.2 x 85.0 (2010 x 920 x 2160)	965 (438)

* Published interior volumes are nominal; useable cu.ft. (L) capacities may be offset by shelves, drawers, blower coils or cabinet protrusions. For specific cabinet dimensions and allowances, or for verification of clearance tolerances, contact our sales representative. Product performance may be affected by ambient temperature conditions, humidity conditions, sample loading preferences and frequency of door openings. Contact our sales representative for specific inquiries regarding your application.

Cabinet Construction and Performance

- All refrigeration and control systems are top-mounted (except sliding glass door model REC-4504, base mounted)
- Door lock provision on all models
- One duplex vapor-proof interior outlet, continuous on; separate power cord provided
- Door activated light switch on all models except REC-4504
- Model REC-4504 has independent switch activated lights only
- Zinc-plated, open wire shelves, adjustable in 1" (25 mm) increments; no tools required
- Multi-pane glass door(s) with spring loaded door closures and a 90° stay-open feature (except sliding door model REC-4504)
- Positive, forced-air circulation maintains temperature uniformity at all shelf levels
- Peripheral closed-cell door gasket(s) maintain temperature integrity

- Two access ports, 2" (50 mm) diameter, with hinged covers
- Keyed door locks for security (except model REC-4504)
- 2" (50 mm) casters, 2 locking, 2 non-locking, factory installed
- Separate power cord for interior outlets on models REC-4504 and REC-7504
- High-density CFC-free urethane foam insulation protects cabinet from ambient temperature fluctuations and minimizes operating costs
- Interior and exterior surfaces are finished with a high-impact powder paint coating

Refrigeration System

- Heavy duty, industrial-grade, hermetically sealed compressors
- Automatic defrost for optimum cooling capacity
- Automatic condensate removal; no drain lines required

Optional Accessories

- Voltage safeguard, free standing
- Temperature recorder, 6" (152 mm) circular chart, 7-day drive
- Additional access port, 2" (50 mm) diameter, with cover
- Stainless steel interior and exterior surfaces
- Additional shelves, full or half size
- Heated glass doors and door swing variations available on most models

REC-4504 chromatography refrigerator with sliding glass doors as standard. Shown with optional temperature recorder.



Thermo Scientific High Performance Laboratory Refrigerators

Featuring
IntrLogic
Microprocessor
Control

Our Revco selection of general purpose laboratory refrigerators offers cabinet sizes to fit a variety of space needs and storage volume requirements.



Thermo Scientific Revco laboratory refrigerators, left to right: Models REL-2304, REL-404 and REL-5004. Shown with optional casters and temperature recorders. Optional glass doors are available. Model REL-404 shown with optional finished countertop.



REL series refrigerators feature the IntrLogic microprocessor control system, positive airflow systems, industrial quality cabinet construction and extra-strength refrigeration compressors selected for industrial, clinical and scientific use.

IntrLogic Microprocessor Control

REL series lab refrigerators feature enhanced digital electronic technology designed to simplify operation and deliver greater accuracy (see pages 4 and 5).

- Adjustable temperature control, range +1°C to +8°C, factory pre-set to +4°C
- Icon-based controls and displays include graphic references for universal operation
- Setpoint security with key operated triple-position master switch controls power to all systems for added safety
- Audible/visual warnings for over-temperature, undertemperature and power failure, with visual status reports on critical functions

- Graphic thermometer confirms proper operation at a glance, shows normal, high or low temperature condition; steady green for normal, flashing top bar for overtemperature, flashing bulb for undertemperature
- Advanced defrost sensor manages the defrost cycle, minimizing trace amounts of frost build-up to maintain refrigeration coil efficiency
- Enlarged digital display, resolution to within 0.1°C, improves visibility
- Alarm silence, ringback and automatic reset functions
- Push button alarm test verifies sensor continuity
- Battery backup assures control panel function during power failure
- Remote alarm contacts are included on all models



REL-404 undercounter refrigerator.

Thermo Scientific Revco General Purpose Laboratory Refrigerators

Temperature Range: +1°C to +8°C, factory preset to +4°C (auto defrost)

Model No.	Cu.Ft. (L)	Voltage (Hz)	Amps/Breaker (Plug)	Cabinet	Door	Shelves	Int. Dimensions* H x D x W inches (mm)	Ext. Dimensions* H x D x W inches (mm)	Ship Weight lb (kg)
REL-404A REL-404V	4.9 (133)	115 (60) 230 (50)	8.0/15 (P1) 6.0/15 (P7)	undercounter	single, solid	3	20.0 x 20.0 x 20.0 (500 x 500 x 500)	33.4 x 26.0 x 24.0 (850 x 660 x 610)	212 (96)
REL-1204A REL-1204V	11.5 (326)	115 (60) 230 (50)	9.4/15 (P1) 6.0/15 (P7)	space saver	single, solid	4	52.0 x 21.0 x 20.0 (1320 x 530 x 500)	71.9 x 28.8 x 24.0 (1830 x 740 x 610)	280 (127)
REL-2304A REL-2304D REL-2304V	23.3 (659)	115 (60) 208/230 (60) 230 (50)	9.4/15 (P1) 6.0/15 (P4) 6.0/15 (P7)	upright	single, solid	4	58.0 x 29.0 x 24.0 (1470 x 730 x 610)	77.5 x 35.5 x 28.0 (1970 x 910 x 720)	405 (184)
REL-3004A REL-3004D REL-3004V	29.2 (826)	115 (60) 208/230 (60) 230 (50)	9.4/15 (P1) 6.0/15 (P4) 6.0/15 (P7)	upright	single, solid	4	58.0 x 29.0 x 30.0 (1470 x 730 x 760)	77.5 x 35.5 x 34.0 (1970 x 910 x 870)	435 (197)
REL-4504A REL-4504D REL-4504V	45.8 (1297)	115 (60) 208/230 (60) 230 (50)	15.0/20 (P2) 8.5/15 (P4) 8.5/15 (P7)	upright	double, sliding glass	8	58.0 x 26.0 x 52.0 (1470 x 660 x 1320)	77.5 x 35.0 x 56.5 (1970 x 890 x 1440)	670 (304)
REL-5004A REL-5004D REL-5004V	51.1 (1447)	115 (60) 208/230 (60) 230 (50)	15.0/20 (P2) 8.5/15 (P4) 8.5/15 (P7)	upright	double, solid	8	58.0 x 29.0 x 52.0 (1470 x 730 x 1320)	77.5 x 35.5 x 56.5 (1970 x 910 x 1440)	585 (265)
REL-7504A REL-7504D REL-7504V	78.8 (2231)	115 (60) 208/230 (60) 230 (50)	16.0/20 (P2) 10.5/15 (P4) 10.5/15 (P7)	upright	triple, solid	12	58.0 x 29.0 x 81.0 (1470 x 730 x 2050)	77.5 x 35.5 x 85.0 (1970 x 910 x 2160)	805 (365)

* Published interior volumes are nominal; useable cu. ft. (L) capacities may be offset by shelves, drawers, blower coils or cabinet protrusions. For specific cabinet dimensions and allowances, or for verification of clearance tolerances, contact our sales representatives. Product performance may be affected by ambient temperature conditions, humidity conditions, sample loading preferences and frequency of door openings. Contact our sales representatives for specific inquiries regarding your application.

Cabinet Construction and Inventory System

- High-density CFC-free urethane foam insulation protects cabinet from ambient temperature fluctuations and minimizes operating costs
- Positive, forced-air circulation maintains temperature uniformity at all shelf levels
- Directional airflow assures quick recovery after door openings
- Interior cabinet lights with door activated on/off switch, plus independent switch on control panel for 11.5 cu.ft. (326 L) and larger models
- Model REL-4504 features independent switch activated lights only; under-counter model REL-404 does not have lights
- Self-closing doors close against closed-cell peripheral gasket
- Door locking provision on all models except REL-4504
- Full-length door handle(s) on all models except sliding door model REL-4504

- Interior and exterior surfaces are finished with a high-impact powder paint coating
- Zinc-plated, open wire shelves, adjustable in 1" (25mm) increments; no tools required
- 2" (50 mm) casters standard on model REL-4504
- Adjustable leveling feet standard
- 1" (25 mm) access port standard on model REL-404

Refrigeration System

- Heavy duty, industrial-grade, hermetically sealed compressors
- Automatic defrost maintains optimum cooling capacity
- Automatic condensate removal; no drain lines required

Optional Accessories

- Voltage safeguard, free standing
- Built-in 6" (152 mm), 7-day circular chart recorder (free-standing on REL-404)

- Access port, 2" (50 mm) diameter, with cover
- Stainless steel interior and exterior surfaces
- 2" (50 mm) casters
- Additional shelves
- Full-view glass doors, double pane construction (standard on REL-4504)
- Heated glass doors and door swing variations are available on most models
- Finished countertop for REL-404



REL-5004 refrigerator shown with optional casters and temperature recorder.

Thermo Scientific Blood Bank Refrigerators

Featuring
IntrLogic
Microprocessor
Control

Our Revco blood bank refrigerators are designed to meet strict requirements established by the AABB, ANRC and FDA for storage of whole blood and blood components. The complete selection of +4°C refrigerators feature simplified push-button alarm test functions and reliable, field-proven refrigeration systems.



Upright Revco blood bank refrigerators feature roll-out drawers and temperature recorders as standard. Model shown REB-5004.



REB series refrigerators feature the IntrLogic microprocessor control system, positive airflow systems, industrial quality cabinet construction and extra-strength refrigeration compressors selected for industrial, clinical and scientific use.

IntrLogic Microprocessor Control

REB blood bank refrigerators feature enhanced digital electronic technology designed to simplify operation and deliver greater accuracy (see pages 4 and 5).

- Adjustable temperature control, range +1°C to +8°C, factory pre-set to +4°C
- Icon-based controls and displays include graphic references for universal operation
- Setpoint security with key operated triple-position master switch controls power to all systems for added safety
- Audible/visual warnings for over-temperature, undertemperature and power failure, with visual status reports on critical functions
- Alarm setpoints pre-set to warn of temperature deviation at +5.5°C overtemperature and +1.5°C undertemperature

- Graphic thermometer confirms proper operation at a glance, shows normal, high or low temperature condition; steady green for normal, flashing top bar for overtemperature, flashing bulb for undertemperature
- Advanced defrost sensor manages the defrost cycle, minimizing trace amounts of frost build-up to maintain refrigeration coil efficiency
- Enlarged digital display, resolution to within 0.1°C, improves visibility
- Alarm silence, ringback and automatic reset functions
- Push button alarm test verifies sensor continuity
- Battery backup assures control panel function during power failure
- Extra-long alarm probe lead allows manual testing and verification
- Remote alarm contacts are included on all models



REB-404 undercounter blood bank refrigerator shown with optional finished countertop

Thermo Scientific Revco Revco Blood Bank Refrigerators

Temperature Range: +1°C to +8°C, factory preset to +4°C (auto defrost)

Model No.	Cu.Ft./L (Blood Bag Capacity)**	Voltage (Hz)	Amps/ Breaker (Plug)	Cabinet	Door	Drawers	Int. Dimensions* H x D x W inches (mm)	Ext. Dimensions* H x D x W inches (mm)	Ship Weight lb (kg)
REB-404A REB-404V	4.9/133 (48)	115 (60) 230 (50)	8.0/15 (P1) 6.0/15 (P7)	undercounter	single, solid	2	20.0 x 20.0 x 20.0 (500 x 500 x 500)	33.4 x 26.0 x 24.0 (850 x 660 x 610)	212 (96)
REB-1204A REB-1204V	11.5/326 (120)	115 (60) 230 (50)	9.4/15 (P1) 6.0/15 (P7)	space saver	single, glass	5	52.0 x 21.0 x 20.0 (1320 x 530 x 500)	71.9 x 28.8 x 24.0 (1830 x 740 x 610)	320 (145)
REB-2304A REB-2304D REB-2304V	23.3/659 (288)	115 (60) 208/230 (60) 230 (50)	9.4/15 (P1) 6.0/15 (P4) 6.0/15 (P7)	upright	single, glass	6	58.0 x 29.0 x 24.0 (1470 x 730 x 610)	77.5 x 35.5 x 28.0 (1970 x 910 x 720)	470 (213)
REB-3004A REB-3004D REB-3004V	29.2/826 (360)	115 (60) 208/230 (60) 230 (50)	9.4/15 (P1) 6.0/15 (P4) 6.0/15 (P7)	upright	single, glass	6	58.0 x 29.0 x 30.0 (1470 x 730 x 760)	77.5 x 35.5 x 34.0 (1970 x 910 x 870)	505 (227)
REB-5004A REB-5004D REB-5004V	51.1/1447 (576)	115 (60) 208/230 (60) 230 (50)	15.0/20 (P2) 8.5/15 (P4) 8.5/15 (P7)	upright	double, glass	12	58.0 x 29.0 x 52.0 (1470 x 730 x 1320)	77.5 x 35.5 x 56.5 (1970 x 910 x 1440)	790 (359)

* Published interior volumes are nominal; useable cu.ft. (L) capacities may be offset by shelves, drawers, blower coils or cabinet protrusions. For specific cabinet dimensions and allowances, or for verification of clearance tolerances, contact our sales representative. Product performance may be affected by ambient temperature conditions, humidity conditions, sample loading preferences and frequency of door openings. Contact our sales representative for specific inquiries regarding your application.

** Nominal capacity based on 450 mL whole blood bags.

Cabinet Construction and Inventory System

- Full-extension adjustable stainless steel drawers
- Dual-pane glass viewing door(s), insulated to prevent condensation (optional on REB-404)
- High-density CFC-free urethane foam insulation protects cabinet from ambient temperature fluctuations and minimizes operating costs
- Positive, forced-air circulation to maintain temperature uniformity at all drawer levels
- Directional air flow assures quick recovery after door openings
- Interior cabinet lights with door activated on/off switch, plus independent switch on control panel (except on 4.9 cu.ft. (133 L) models)
- Self-closing doors close against closed-cell peripheral gasket
- Door locking provision on all models
- 1" (25 mm) access port standard on REB-404

- Adjustable leveling feet standard; optional casters are available
- All models feature a smooth, scratch resistant painted interior and exterior surface for easy cleaning

Temperature Recorders

- Built-in 6" (152 mm), 7-day circular chart recorder standard (optional free-standing recorder on REB-404)
- Provides permanent record of storage conditions

Refrigeration System

- Heavy duty, industrial-grade, hermetically sealed compressors
- Automatic defrost for optimum cooling capacity
- Automatic condensate removal; no drain lines required

Optional Accessories

- Voltage safeguard, free-standing
- Free-standing temperature recorder for REB-404

- Access port, 2" (50 mm) diameter, with cover [standard 1" (25 mm) port for REB-404]
- Stainless steel interior and exterior surfaces
- 2" (50 mm) casters
- Additional drawers, stainless steel drawer dividers
- Heated glass doors and door swing variations available on most models
- Finished countertop for REB-404



Slimline REB-1204 blood bank refrigerator.

Thermo Scientific Pharmacy Refrigerators

Featuring
IntrLogic
Microprocessor
Control

Configured for accurate storage and easy retrieval of pharmacy products, our Revco RPR pharmacy refrigerators feature full extension stainless steel roll-out drawers. Developed for stable temperature control over a range of +1°C to +8°C, these refrigerators are available in four sizes.



Revco pharmacy refrigerators are designed to provide stable temperature control and allow efficient inventory management. Model shown: RPR-3004 with full extension roll-out drawers and full view glass door.



PRR series pharmacy refrigerators feature the IntrLogic microprocessor control system, positive airflow systems, industrial quality cabinet construction and extra-strength refrigeration compressors selected for industrial, clinical and scientific use.

IntrLogic Microprocessor Control

RPR pharmacy refrigerators feature enhanced digital electronic technology designed to simplify operation and deliver greater accuracy (see pages 4 and 5).

- Adjustable temperature control, range +1°C to +8°C, factory pre-set to +4°C
- Icon-based controls and displays include graphic references for universal operation
- Setpoint security with key operated triple-position master switch controls power to all systems for added safety
- Audible/visual warnings for over-temperature, undertemperature and power failure, with visual status reports on critical functions

- Graphic thermometer confirms proper operation at a glance, shows normal, high or low temperature condition; steady green for normal, flashing top bar for overtemperature, flashing bulb for undertemperature
- Advanced defrost sensor manages the defrost cycle, minimizing trace amounts of frost build-up to maintain refrigeration coil efficiency
- Enlarged digital display, resolution to within 0.1°C, improves visibility
- Alarm silence, ringback and automatic reset functions
- Push button alarm test verifies sensor continuity
- Battery backup assures control panel function during power failure
- Remote alarm contacts are included on all models

Thermo Scientific Revco Pharmacy Refrigerators

Temperature Range: +1°C to +8°C, factory preset to +4°C (auto defrost)

Model No.	Cu.Ft. (L)	Voltage (Hz)	Amps/Breaker (Plug)	Cabinet	Door	Drawers	Int. Dimensions* H x D x W inches (mm)	Ext. Dimensions* H x D x W inches (mm)	Ship Weight lb (kg)
RPR-1204A RPR-1204V	11.5 (326)	115 (60) 230 (50)	9.4/15 (P1) 6.0/15 (P7)	upright	single, glass	5	52.0 x 21.0 x 20.0 (1320 x 530 x 500)	71.9 x 28.8 x 24.0 (1830 x 740 x 610)	320 (145)
RPR-2304A RPR-2304D RPR-2304V	23.3 (659)	115 (60) 208/230 (60) 230 (50)	9.4/15 (P1) 6.0/15 (P4) 6.0/15 (P7)	upright	single, glass	6	58.0 x 29.0 x 24.0 (1470 x 730 x 610)	77.5 x 35.5 x 28.0 (1970 x 910 x 720)	470 (213)
RPR-3004A RPR-3004D RPR-3004V	29.2 (826)	115 (60) 208/230 (60) 230 (50)	9.4/15 (P1) 6.0/15 (P4) 6.0/15 (P7)	upright	single, glass	6	58.0 x 29.0 x 30.0 (1470 x 730 x 760)	77.5 x 35.5 x 34.0 (1970 x 910 x 870)	505 (227)
RPR-5004A RPR-5004D RPR-5004V	51.1 (1447)	115 (60) 208/230 (60) 230 (50)	15.0/20 (P2) 8.5/15 (P4) 8.5/15 (P7)	upright	double, glass	12	58.0 x 29.0 x 52.0 (1470 x 730 x 1320)	77.5 x 35.5 x 56.5 (1970 x 910 x 1440)	790 (359)

* Published interior volumes are nominal; useable cu.ft. (L) capacities may be offset by shelves, drawers, blower coils or cabinet protrusions. For specific cabinet dimensions and allowances, or for verification of clearance tolerances, contact our sales representative. Product performance may be affected by ambient temperature conditions, humidity conditions, sample loading preferences and frequency of door openings. Contact our sales representative for specific inquiries regarding your application.

Cabinet Construction and Inventory System

- Full extension stainless steel drawers, fully adjustable
- Full view glass door(s), double pane construction eliminates condensation; spring loaded closures include 90° stay open feature
- High-density CFC-free urethane foam insulation protects cabinet from ambient temperature fluctuations and minimizes operating costs
- Positive, forced-air circulation maintains temperature uniformity at all shelf levels
- Directional air flow assures quick recovery after door openings
- Interior cabinet lights with door activated on/off switch, plus independent switch on control panel
- Self-closing doors close against closed-cell peripheral gasket

- Door locking provision on all models
- Adjustable leveling feet standard; optional casters are available
- Smooth scratch resistant painted interior and exterior surfaces for easy cleaning

Refrigeration System

- Heavy duty, industrial-grade, hermetically sealed compressors
- Automatic defrost maintains optimum cooling capacity
- Automatic condensate removal; no drain lines required

Optional Accessories

- Voltage safeguard, free standing
- Built-in 6" (152 mm), 7-day circular chart recorder
- Access port, 2" (50 mm) diameter, with cover
- Stainless steel interior and exterior surfaces

- 2" (50 mm) casters
- Additional shelves
- Additional drawers
- Heated glass doors and door swing variations available on most models



Slimline RPR-1204 pharmacy refrigerator, shown with optional casters and temperature recorder.

Thermo Scientific -30°C High Performance Laboratory Freezers

Featuring
IntrLogic
Microprocessor
Control

Our Revco -30°C general laboratory freezers are designed for medical and scientific applications such as storage of reagents, pharmaceuticals, biologicals or other commonly used laboratory materials. Models offer cabinet sizes to fit a variety of space needs and storage volume requirements.



ULT-5030 (left) and ULT-2330 (right) -30°C freezers, shown with optional casters and temperature recorder.



Our Revco freezers feature the IntrLogic microprocessor control system, positive airflow systems, industrial quality cabinet construction and extra-strength refrigeration compressors selected for industrial, clinical and scientific use.

IntrLogic Microprocessor Control

ULT series lab freezers feature enhanced digital electronic technology designed to simplify operation and deliver greater accuracy (see pages 4 and 5).

- Pre-set -30°C operation
- Icon-based controls and displays include graphic references for universal operation
- Setpoint security with key operated triple-position master switch controls power to all systems for added safety
- Audible/visual warnings for over-temperature, undertemperature and power failure, with visual status reports on critical functions

- Graphic thermometer confirms proper operation at a glance, shows normal, high or low temperature condition; steady green for normal, flashing top bar for overtemperature, flashing bulb for undertemperature
- Advanced defrost sensor manages the defrost cycle, minimizing trace amounts of frost build-up to maintain refrigeration coil efficiency
- Enlarged digital display, resolution to within 0.1°C, improves visibility
- Alarm silence, ringback and automatic reset functions
- Push button alarm test verifies sensor continuity
- Battery backup assures control panel function during power failure
- Remote alarm contacts are included on all models

Thermo Scientific Revco General Purpose Laboratory Freezers

Temperature Range: -30°C (auto defrost)

Model No.	Cu.Ft. (L)	Voltage (Hz)	Amps/Breaker (Plug)	Cabinet	Door	Shelves	Int. Dimensions* H x D x W inches (mm)	Ext. Dimensions* H x D x W inches (mm)	Ship Weight lb (kg)
ULT-430A ULT-430V	4.9 (133)	115 (60) 230 (50)	8.0/15 (P1) 6.0/15 (P7)	undercounter	single, solid	3	20.0 x 20.0 x 20.0 (500 x 500 x 500)	33.4 x 26.0 x 24.0 (850 x 660 x 610)	212 (96)
ULT-1230A ULT-1230V	11.5 (326)	115 (60) 230 (50)	8.0/15 (P1) 8.0/15 (P7)	space saver	single, solid	4	52.0 x 21.0 x 20.0 (1320 x 530 x 500)	71.9 x 28.8 x 24.0 (1830 x 740 x 610)	280 (127)
ULT-2330A ULT-2330D ULT-2330V	23.3 (659)	115 (60) 208/230 (60) 230 (50)	16.0/20 (P2) 12.0/15 (P4) 12.0/15 (P7)	upright	single, solid	4	58.0 x 29.0 x 24.0 (1470 x 730 x 610)	77.5 x 35.5 x 28.0 (1970 x 910 x 720)	370 (168)
ULT-3030A ULT-3030D ULT-3030V	29.2 (826)	115 (60) 208/230 (60) 230 (50)	16.0/20 (P2) 12.0/15 (P4) 12.0/15 (P7)	upright	single, solid	4	58.0 x 29.0 x 30.0 (1470 x 730 x 760)	77.5 x 35.5 x 34.0 (1970 x 910 x 870)	445 (202)
ULT-5030A ULT-5030D ULT-5030V	51.1 (1447)	115 (60) 208/230 (60) 230 (50)	16.0/20 (P2) 12.0/15 (P4) 12.0/15 (P7)	upright	double, solid	8	58.0 x 29.0 x 52.0 (1470 x 730 x 1320)	77.5 x 35.5 x 56.5 (1970 x 910 x 1440)	600 (272)

* Published interior volumes are nominal; useable cu.ft. (L) capacities may be offset by shelves, drawers, blower coils or cabinet protrusions. For specific cabinet dimensions and allowances, or for verification of clearance tolerances, contact our sales representative. Product performance may be affected by ambient temperature conditions, humidity conditions, sample loading preferences and frequency of door openings. Contact our sales representative for specific inquiries regarding your application.

Cabinet Construction and Inventory System

- Cabinet capacities from 4.9 to 51.1 cu.ft. (133 to 1447 L)
- High density CFC-free urethane foam insulation protects cabinet from ambient temperature fluctuations and minimizes operating costs
- Positive, forced-air circulation maintains temperature uniformity at all shelf levels
- Directional air flow assures quick recovery after door openings
- Solid door with keyed door lock for added security
- Self-closing doors close against closed-cell peripheral gasket
- Door locking provision on all models
- Full-length door handle(s) on all models
- Zinc-plated, open wire shelves, adjustable in 1" (25 mm) increments; no tools required

- Adjustable leveling feet standard; optional casters are available
- Scratch resistant painted interior and exterior finish for easy cleaning
- 1" (25 mm) access port standard on ULT-430

Refrigeration System

- Heavy duty, industrial-grade, hermetically sealed compressors
- Automatic defrost maintains optimum cooling capacity
- Automatic condensate removal; no drain lines required

Optional Accessories

- Voltage safeguard, free standing
- Built-in 6" (152 mm), 7-day circular chart recorder (free-standing on ULT-430)
- Access port 1" (25 mm) diameter, (standard on ULT-430)

- Stainless steel interior and exterior surfaces
- 2" (50 mm) casters
- Additional shelves
- Finished countertop for ULT-430



Model ULT-430 undercounter freezer, shown with optional finished countertop.

Thermo Scientific -30°C Plasma Freezers

Featuring
IntrLogic
Microprocessor
Control

Our Revco -30°C plasma freezers are designed to meet AABB, ANRC and FDA standards for safety and performance in plasma storage. Five models offer cabinet sizes to meet a variety of space needs and storage volume requirements.



UFP-5030 (left) and UFP-1230 (right) plasma freezers are equipped with 7-day temperature recorders as standard to provide an accurate record of storage temperature.



Our Revco -30°C plasma freezers feature the IntrLogic microprocessor control system, positive airflow systems, industrial quality cabinet construction and extra-strength refrigeration compressors selected for demanding blood bank applications.

IntrLogic Microprocessor Control

Plasma freezers feature enhanced digital electronic technology designed to simplify operation and deliver greater accuracy (see pages 4 and 5).

- Pre-set -30°C operation
- Icon-based controls and displays include graphic references for universal operation
- Setpoint security with key operated triple-position master switch controls power to all systems for added safety
- Audible/visual warnings for over-temperature, undertemperature and power failure, with visual status reports on critical functions

- Graphic thermometer confirms proper operation at a glance, shows normal, high or low temperature condition; steady green for normal, flashing top bar for overtemperature, flashing bulb for undertemperature
- Advanced defrost sensor manages the defrost cycle, minimizing trace amounts of frost build-up to maintain refrigeration coil efficiency
- Enlarged digital display, resolution to within 0.1°C, improves visibility
- Alarm silence, ringback and automatic reset functions
- Push button alarm test verifies sensor continuity
- Battery backup assures control panel function during power failure
- Extra-long alarm probe lead allows manual testing and verification
- Remote alarm contacts are standard on all models



UFP-430 undercounter plasma freezer shown with optional finished countertop

Thermo Scientific Revco Plasma Freezers

Temperature Range: -30°C (auto defrost)

Model No.	Cu.Ft./L (Plasma Box Capacity)**	Voltage (Hz)	Amps/ Breaker (Plug)	Cabinet	Door	Drawers	Int. Dimensions* H x D x W inches (mm)	Ext. Dimensions* H x D x W inches (mm)	Ship Weight lb (kg)
UFP-430A UFP-430V	4.9/133 (78)	115 (60) 230 (50)	8.0/15 (P1) 6.0/15 (P7)	undercounter	single, solid	2	20.0 x 20.0 x 20.0 (500 x 500 x 500)	33.4 x 26.0 x 24.0 (850 x 660 x 610)	212 (96)
UFP-1230A UFP-1230V	11.5/326 (273)	115 (60) 230 (50)	8.0/15 (P1) 8.0/15 (P7)	space saver	single, solid	7	52.0 x 21.0 x 20.0 (1320 x 530 x 500)	71.9 x 28.8 x 24.0 (1830 x 740 x 610)	365 (166)
UFP-2330A UFP-2330D UFP-2330V	23.3/659 (532)	115 (60) 208/230 (60) 230 (50)	16.0/20 (P2) 12.0/15 (P4) 12.0/15 (P7)	upright	single, solid	7	58.0 x 29.0 x 24.0 (1470 x 730 x 610)	77.5 x 35.5 x 28.0 (1970 x 910 x 720)	425 (193)
UFP-3030A UFP-3030D UFP-3030V	29.2/826 (665)	115 (60) 208/230 (60) 230 (50)	16.0/20 (P2) 12.0/15 (P4) 12.0/15 (P7)	upright	single, solid	7	58.0 x 29.0 x 30.0 (1470 x 730 x 760)	77.5 x 35.5 x 34.0 (1970 x 910 x 870)	580 (263)
UFP-5030A UFP-5030D UFP-5030V	51.1/1447 (1064)	115 (60) 208/230 (60) 230 (50)	16.0/20 (P2) 12.0/15 (P4) 12.0/15 (P7)	upright	double, solid	14	58.0 x 29.0 x 52.0 (1470 x 730 x 1320)	77.5 x 35.5 x 56.5 (1970 x 910 x 1440)	650 (295)

* Published interior volumes are nominal; useable cu.ft. (L) capacities may be offset by shelves, drawers, blower coils or cabinet protrusions. For specific cabinet dimensions and allowances, or for verification of clearance tolerances, contact our sales representative. Product performance may be affected by ambient temperature conditions, humidity conditions, sample loading preferences and frequency of door openings. Contact our sales representative for specific inquiries regarding your application.

** Nominal capacity based on 250 mL plasma boxes.

Cabinet Construction and Inventory System

- High-density CFC-free urethane foam insulation protects cabinet from ambient temperature fluctuations and minimizes operating costs
- Positive, forced-air circulation maintains uniformity at all shelf levels
- Directional airflow assures quick recovery after door openings
- Solid door with keyed door lock for added security
- Doors are self-closing against a closed-cell peripheral gasket; doors are spring loaded on all but undercounter models
- Door locking provision on all models
- Full-length door handle on all models
- Full extension stainless steel drawers
- Adjustable leveling feet standard; optional casters are available
- Interior and exterior surfaces are finished with a high-impact powder paint coating
- 1" (25 mm) access port standard on UFP-430

Temperature Recorders

- Built-in 6" (152 mm), 7-day circular chart recorder, standard (optional free-standing on UFP-430)
- Provides permanent record of storage conditions

Refrigeration System

- Heavy duty, industrial-grade, hermetically sealed compressors
- Automatic defrost maintains optimum cooling capacity
- Automatic condensate removal; no drain lines required

Optional Accessories

- Voltage safeguard, free-standing
- Access port, 1" (25 mm) diameter
- Stainless steel interior and exterior surfaces
- 2" (50 mm) casters
- Stainless steel drawer dividers
- Finished countertop for UFP-430
- Free-standing temperature recorder for UFP-430



UFP-2330 plasma freezer shown with optional casters.

Thermo Scientific -20°C Enzyme and Laboratory Freezers

Featuring
IntrLogic
Microprocessor
Control

Our Revco manual defrost -20°C upright freezers are designed for storage applications where slight intermittent coil warming during an auto defrost cycle is not desired. Two models feature gravity convection air systems for maximum stability without blowers or fans.



The -20°C UEN-2320 enzyme freezer stores 45 enzyme bins on 9 shelves. Shown with optional casters and temperature recorder.



Our Revco -20°C freezers feature the IntrLogic microprocessor control system, gravity air circulation, industrial quality cabinet construction and extra-strength refrigeration compressors selected for industrial, clinical and scientific use.

The UEN-2320 enzyme freezer features an easily accessible inventory system, while the UGL-2320 general lab freezer offers flexible utility value with four wire shelves.

IntrLogic Microprocessor Control

-20°C freezers feature enhanced digital electronic technology designed to simplify operation and deliver greater accuracy (see pages 4 and 5).

- Pre-set -20°C operation
- Icon-based controls and displays include graphic references for universal operation
- Setpoint security with key operated triple-position master switch controls power to all systems for added safety

- Audible/visual warnings for over-temperature, undertemperature and power failure, with visual status reports on critical functions
- Graphic thermometer confirms proper operation at a glance, shows normal, high or low temperature condition; steady green for normal, flashing top bar for overtemperature, flashing bulb for undertemperature
- Enlarged digital display, resolution to within 0.1°C, improves visibility
- Alarm silence, ringback and automatic reset functions
- Push button alarm test verifies sensor continuity
- Battery backup assures control panel function during power failure
- Remote alarm contacts are standard on all models

High impact plastic enzyme storage bins enable easily accessible, highly concentrated inventory storage. Additional bins are useful for managing loose material in general purpose applications; see Accessories section.



Thermo Scientific Revco Enzyme Freezers

Temperature Range: -20°C (manual defrost)

Model No.	Cu.Ft. (L)	Voltage (Hz)	Amps/Breaker (Plug)	Cabinet	Door	Shelves	Int. Dimensions* H x D x W inches (mm)	Ext. Dimensions* H x D x W inches (mm)	Ship Weight lb (kg)
UEN-2320A	23.3 (659)	115 (60)	13.5/20 (P2)	upright	single, solid	9	58.0 x 29.0 x 24.0 (1470 x 730 x 610)	77.5 x 35.5 x 28.0 (1970 x 910 x 720)	425 (193)
UEN-2320D		208/230 (60)	5.6/15 (P4)						
UEN-2320V		230 (50)	5.6/15 (P7)						

Thermo Scientific Revco General Purpose Freezers

Temperature Range: -20°C (manual defrost)

Model No.	Cu.Ft. (L)	Voltage (Hz)	Amps/Breaker (Plug)	Cabinet	Door	Shelves	Int. Dimensions* H x D x W inches (mm)	Ext. Dimensions* H x D x W inches (mm)	Ship Weight lb (kg)
UGL-2320A	23.3 (659)	115 (60)	13.5/20 (P2)	upright	single	4	58.0 x 29.0 x 24.0 (1470 x 730 x 610)	77.5 x 35.5 x 28.0 (1970 x 910 x 720)	425 (193)
UGL-2320D		208/230 (60)	5.6/15 (P4)	solid					
UGL-2320V		230 (50)	5.6/15 (P7)						

* Published interior volumes are nominal; useable cu.ft. (L) capacities may be offset by shelves, drawers, blower coils or cabinet protrusions. For specific cabinet dimensions and allowances, or for verification of clearance tolerances, contact our sales representative. Product performance may be affected by ambient temperature conditions, humidity conditions, sample loading preferences and frequency of door openings. Contact our sales representative for specific inquiries regarding your application.

Cabinet Construction

- Upright 23.3 cu.ft. (659 L) cabinet
- High density CFC-free urethane foam insulation protects cabinet from ambient temperature fluctuations and minimizes operating costs
- Solid door with keyed door lock for added security
- Self-closing door closes against closed-cell peripheral gasket
- Door locking provision on all models
- Full-length door handle
- Adjustable leveling feet standard; optional casters are available
- Scratch resistant painted interior and exterior finish for easy cleaning

Inventory System

- Zinc-plated, open wire shelves, adjustable in 1" (25 mm) increments; no tools required
- Model UEN-2320 Enzyme Freezer includes nine shelves with enzyme storage system of five bins per shelf, maximum 45 bins; labels not provided
- Model UGL-2320 Freezer includes four stainless steel shelves, standard

Refrigeration System

- Heavy duty, industrial-grade, hermetically sealed compressors
- Manual defrost

Optional Accessories

- Voltage safeguard, free-standing
- Built-in 6" (152 mm), 7-day circular chart recorder
- Access port, 1" (25 mm) diameter
- Stainless steel exterior
- 2" (50 mm) casters
- Additional shelves
- Additional bins



UGL-2320 General Purpose -20°C freezer shown with optional casters and temperature recorder.

Thermo Scientific Refrigerated Incubators



All our Revco refrigerated incubators include both heating and refrigeration systems with microprocessor-based control, digital temperature display and high quality cabinet construction. Refrigeration systems may be turned off when not required. Choose from programmable and non-programmable models.



BOD-50A refrigerated incubator.

Programmable Model BOD-50

- Applications include shelf life and life cycle testing, general incubation or refrigerated storage
- Temperature range adjustable from -20°C to +60°C
- Microprocessor control with full programmability
- Digital temperature display and keyed on/off switch
- Forced air circulation for maximum temperature uniformity
- Temperature alarm system with adjustable high/low alarm limits, includes audible and visual warning on high limit deviation and visual warning on low limit
- CFC-free urethane insulated cabinet with corrosion-resistant seamless interior

- Scratch-resistant white acrylic exterior finish
- Keyed door lock for improved security with magnetic door gasket
- Open wire shelves on 10" (254 mm) centers with more than 20 sq. ft. of shelf space, plus 1 utility basket
- Air-cooled, hermetically sealed industrial type compressor
- Automatic defrost with condensate evaporator; no drain required (defrost indicator on BOD-50)
- Remote alarm contacts standard

Non-programmable Models

- Adjustable temperature control, forced-air circulation
- Microprocessor-based control with digital temperature display, keyed on/off switch

- Air-cooled, hermetically sealed industrial type compressor (see chart for defrost mode)
- CFC-free urethane insulated cabinet with corrosion-resistant ABS seamless interior
- Scratch-resistant white acrylic exterior finish
- Keyed door lock for improved security (except model BOD-10)
- Magnetic door gasket
- Remote alarm contacts standard

Optional Accessories

- Built-in 4" (102 mm), 7-day circular chart recorder on model BOD-50
- Free-standing 6" (152 mm) 7-day recorder (access port required)

Thermo Scientific Revco Refrigerated Incubators

Programmable and Non-Programmable Incubator/Refrigerator/Freezer

Model No.	Cu.Ft. (L)	Voltage (Hz)	Amps/Breaker (Plug)	Shelves Fixed/adjustable	Int. Dimensions* H x D x W inches (mm)	Ext. Dimensions* H x D x W inches (mm)	Ship Weight lb (kg)
BOD Refrigerated Incubator, Programmable, Automatic Defrost, Temperature Range Adjustable -20°C to +60°C							
BOD-50A	20.0 (566)	115 (60)	10.6/15 (P1)	4/0 1 basket	56.0 x 22.0 x 28.0 (1420 x 550 x 710)	72.5 x 29.0 x 33.0 (1850 x 740 x 840)	300 (136)
BOD Refrigerated Incubator, Non-programmable, Manual Defrost, Temperature Range Adjustable 0°C to +50°C							
BOD-10A	6.1 (173)	115 (60)	2.9/15 (P1)	1/1	28.0 x 21.0 x 21.0 (710 x 530 x 530)	35.8 x 25.5 x 23.9 (910 x 650 x 610)	115 (52)
BOD Refrigerated Incubator, Non-programmable, Automatic Defrost, Temperature Range Adjustable -15°C to +60°C							
BOD-30A	20.0 (566)	115 (60)	10.6/15 (P1)	4/0 1 basket	56.0 x 22.0 x 28.0 (1420 x 550 x 710)	72.5 x 29.0 x 33.0 (1850 x 740 x 840)	300 (136)

* Published interior volumes are nominal; useable cu.ft. (L) capacities may be offset by shelves, drawers, blower coils or cabinet protrusions. For specific cabinet dimensions and allowances, or for verification of clearance tolerances, contact our sales representatives. Product performance may be affected by ambient temperature conditions, humidity conditions, sample loading preferences and frequency of door openings. Contact our sales representatives for specific inquiries regarding your application.

Accessories



Productive use of our Revco refrigerator or freezer can be enhanced with accessories specially designed to improve utility and convenience. Many accessories are factory installed and must be specified with your original order.

Field installed accessories may require the services of a factory authorized technician.

Some accessories or options may affect refrigerator or freezer performance; for more information contact your Sales Representative.

Voltage safe guard.

Voltages and Serial Numbers

Serial number tags on all our Revco products contain model numbers and voltage information needed for accurate selection of accessories ordered for field-installation.

- It is recommended that accessories be ordered when your refrigerator or freezer is ordered
- Factory-installed accessories allow proper set-up without power-down or emptying the cabinet

Validation Testing Program

Validation testing services in advance of shipment can accelerate in-house FDA Installation Qualification (IQ) and Operation Qualification (OQ) programs. Validation services include documentation and performance reports, compressor and sub-system component specifications, microprocessor flow diagrams, software specifications and more. For more details, contact our sales representative.

Certification of Calibration

Control, alarm and temperature recording systems are systematically calibrated at the factory for accurate performance. An optional Certificate of Calibration to an NIST (National Institute of Standards and Technology, formerly National Bureau of Standards) traceable instrument includes a model number and serial number certificate and single point

calibration. Multiple point calibration is also available. Calibration certificates must be requested when ordering.

Catalog No. 6916-2

Voltage Safeguard

Helps protect refrigerator or freezer from damage by automatically boosting low voltage. Includes terminal board for direct wiring. Free-standing, field installed.

Catalog No. 5575

Shelves

Additional zinc-plated, open wire shelves are designed to fit individual cabinets; shelves are available in full and half-sizes. Undercounter models use full size only.

Shelves							
Nominal Cabinet Volume, Cu.Ft. (L)	4.9 (133)	11.5 (326)	23.3 (659)	29.2 (826)	45.8 (1297)	51.1 (1447)	78.8 (2231)
Shelves	Catalog Number						
Zinc Plated, Full Size	7125		6695		6696		
Zinc Plated, Half Size	n/a		6697		6698		
Stainless Steel, Full Size Only	6202-1		6695-1		6696-1		

Glass Doors

Solid doors are offered standard on most refrigerators unless otherwise specified. Optional dual-pane glass doors must be specified when ordering. Contact your Sales Representative for information on heated glass doors.

Door Options Selection Chart							
Cu.Ft. (L)	4.9(133)	11.5(326)	23.3(659)	29.2(826)	51.1(1447)	78.8(2231)	
Swing	Type	Catalog Number					
LH	solid	7119	6995	6997	6999		
	glass	7123	6996	6998	7000		
	heated glass		7073	7075	7087		
RH	solid	std	std	std	std		
	glass	7118	7066	7012	7013		
	heated glass		7074	7086	7088		
LH/LH	solid					7001	
	glass					7067	
	heated glass					7089	
RH/RH	solid					7068	
	glass					7069	
	heated glass					7090	
LH/RH	solid					std	
	glass					7014	
	heated glass					7091	
LH/LH/LH	solid						7070
	glass						7071
	heated glass						7093
RH/RH/RH	solid						7072
	glass						7008
	heated glass						7083
LH/LH/RH	solid						7009
	glass						7010
	heated glass						7084
LH/RH/RH	solid						std
	glass						7015
	heated glass						n/a

LH = Left Hand, RH = Right Hand Note: Glass doors are standard on selected blood bank, chromatography and pharmacy refrigerators; consult specification chart for details. Sliding glass doors are standard on all 45.8 cu.ft. (1297 L) models. Heated glass doors will increase amperage and may require next size breaker.

Accessories



Temperature recorder.

Roll-Out Drawers

Optional stainless steel drawers, offered as an alternative to standard open wire shelving, are adjustable with full extension. Drawers are factory installed and must be specified when ordering cabinet.

Roll-Out Drawers							
Nominal Cabinet Volume, Cu.Ft. (L)	4.9 (133)	11.5 (326)	23.3 (659)	29.2 (826)	45.8 (1297)	51.1 (1447)	78.8 (2231)
Drawers, Complete Set	Catalog Number (Number of Drawers)						
Refrigerator	7134 (2)*	7445 (5)	6699 (6)	6704 (6)	6703 (12)	6700 (12)	6701 (18)
Freezer	7134 (2)*	7446 (7)*	6699 (6)	6704 (6)	6703 (12)	6700 (12)	6701 (18)
Drawers, Additional	Catalog Number						
Refrigerator	n/a	n/a	6702	6725	6726	6702	6702
Freezer	n/a	n/a	6702	6725	6726	6702	6702

Surge Suppressor

Surge suppressors provide additional protection against voltage transients which may damage refrigeration or control components. Independent module requires field installation by a qualified electrician or factory authorized service technician. Model number and voltage must be specified when ordering.

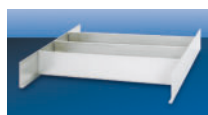
Catalog No. 6402

Casters

Casters are optional on most models. Casters are factory installed when ordered at time of cabinet order; customer installed if ordered separately. Choose from 2" (50 mm) or 3" (76 mm) casters.

Casters							
Nominal Cabinet Volume, Cu.Ft. (L)	4.9 (133)	11.5 (326)	23.3 (659)	29.2 (826)	45.8 (1297)	51.1 (1447)	78.8 (2231)
Casters	Catalog Number						
2" Casters (50 mm), Set of 4	6041	6041	6041	6041	6094	6041	6041
3" Casters (76 mm), Set of 4	6041-1	6041-1	6041-1	6041-1	6694-1	6041-1	6041-1
Locking Casters for -30°C Freezers only							
Set includes 2 non-locking 2" (50 mm) casters	6983	6983	6983	6983	6983	6983	6983

Drawer Dividers (Blood Bank Refrigerators and Plasma Freezers)



Stainless steel drawer dividers help manage inventory of bags and boxes.

Catalog No. 6206

Drawer Dividers						
Nominal Cabinet Volume, Cu.Ft. (L)	4.9 (133)	11.5 (326)	23.3 (659)	29.2 (826)	51.1 (1447)	78.8 (2231)
Drawer Dividers	Catalog Number					
Stainless steel column divider (number of columns)	7027 (4)	7027 (4)	6206 (4)	6963 (5)	6206 (4)	6206 (4)

Interior, Exterior and Countertop Finishes

- Optional stainless steel interior and/or exterior surfaces are available and must be specified when ordering
- Optional stainless steel or white finished countertops on undercounter models

Finishes							
Nominal Cabinet Volume, Cu.Ft. (L)	4.9 (133)	11.5 (326)	23.3 (659)	29.2 (826)	45.8 (1297)	51.1 (1447)	78.8 (2231)
Finishes	Catalog Number						
Stainless Steel Interior	7116	6199	6115	6709	6711	6116	6117
Stainless Steel Exterior	7117	6201	6128	6710	6712	6129	6130
White Countertop	7120	n/a	n/a	n/a	n/a	n/a	n/a
Stainless Steel Countertop	7127	n/a	n/a	n/a	n/a	n/a	n/a

Finished countertop adds 1" (25 mm) to unit height.

Temperature Recorders

Optional 6" (152 mm) chart, 7-day temperature recorders use pressure-sensitive chart paper; one box of 50 charts included. Built-in recorders must be specified when ordering. Recorders are standard on 11.5 cu.ft. (326 L) and larger blood bank refrigerators and plasma freezers.

Temperature Recorders							
Nominal Cabinet Volume, Cu.Ft. (L)	4.9 (133)	11.5 (326)	23.3 (659)	29.2 (826)	45.8 (1297)	51.1 (1447)	78.8 (2231)
Temperature Recorders	Catalog Number						
Built-in, Factory Installed	n/a						6183-7
Free-standing Customer Installed	6383-7						6383-7
Replacement Chart paper, -40°C to +25°C, box of 50 charts	6184						6184



LabCooler™ Modules

LabCooler Benchtop cooler helps maintain enzymes and other frozen material at stable temperatures when used at the lab bench. When stored in a freezer, coolers insulate



Catalog No. 6744, shown top; Catalog No. 6745, shown above.

- enzymes and other biologicals from periodic temperature fluctuations due to door openings, defrost cycles or temporary power outages of short duration. Choose from two models.
- The LabCooler II Benchtop Cooler maintains enzymes at stable -20°C for up to two hours. Holds (24) 1.5 ml tubes and (8) 0.5 ml tubes.
- The LabCooler Lite Benchtop Cooler is smaller and more compact, maintains enzyme temperatures at -10°C or below for up to 1 hour outside the freezer. Holds up to (7) 1.5 ml tubes. Includes a clear interlocking top.

Cooler II Catalog No. 6744
LabCooler Lite Catalog No. 6745



Deluxe Electronic Remote Alarm

The deluxe electronic remote alarm can be programmed to

sound an alarm in the event of a temperature increase or power failure.

- The alarm can dial up to four telephone numbers
- Advises of an alarm condition across any telephone system which accepts pulse dialing
- One system can monitor up to four individual freezers or up to three groups of freezers (available in 115V/60Hz only)
- Requires dedicated phone line

Catalog No. 6224



Remote Alarm Module

For audible and visual signal in the event of temperature rise or power

failure. Can be located up to 1760 feet (536 meters) from cabinet. Must be used with electronic alarm system and connected to normally-open or normally-closed remote alarm contacts. Wire not included. Specify refrigerator or freezer voltage when ordering (available in 115V/60Hz only).

Catalog No. 5612-1A



Enzyme Storage Bin

Bins are supplied standard on Model UEN-2320 Enzyme Freezer.

Additional bins are useful for storage and inventory management. Formed of high impact ABS plastic, off-white. Labels not included.

Catalog No. 6736

Interior Dimensions (nominal)

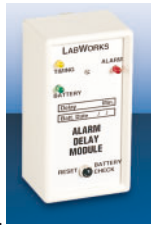
3.5"W (90 mm) x 3"H (76 mm) x 24"L (610 mm)

Exterior Dimensions (nominal)

4.4"W (112 mm) x 3.04"H (77 mm) x 25.25"L (641 mm)

Alarm Delay Module

The alarm delay eliminates nuisance alarms due to intermittent or transitory conditions such as lightning or brief power outages.



The adjustable delay requires an alarm condition to exist continuously for a pre-determined time (adjustable) before a signal is released to a central alarm/monitoring system or telephone dialer.

- Adjustable delay from 0.5 to 32 minutes
- Red alarm indicator light remains flashing after transient condition is corrected; requires manual reset
- Signals chronic alarm conditions which may indicate impending component failure; allows time for inspection or corrective maintenance
- Inserts variable time interval between detection of alarm condition and transmission of signal
- Includes accurate digital timing circuit adjustable from 0.5, 1, 2, 4, 8, 18 or 32 minutes
- Operates independent of line power; built-in battery and alarm test function uses customer supplied 9V battery

Catalog No. 6903

Access Port

Additional port for probes, cables, leads or measuring instruments may be added to any cabinet. Port is 1" (25 mm) diameter for freezers and 2" (50 mm) for refrigerators. Location must be specified when ordering. 2" For Refrigerators and Freezers.

Catalog No. 6038

Inside Delivery

Through a network of factory authorized service centers, Thermo can arrange installation within your facility. Contact your Thermo Sales Representative if you have special delivery or installation requirements. Prices are quoted by region.

Export Crating

Reinforced wooden crating may be desired for shipment to some international locations, depending on destination and mode of transport. Crating may be solid wood or frame only. Specify when ordering.

Solid wood
Wood frame

Catalog No. 6099
Catalog No. 6924

Digital Temperature Monitor



Simple, accurate and cost-effective, the Revco digital temperature

and power monitor provides both alarm/monitoring and digital temperature display in a single, self-contained unit. Standard features include high alarm, alarm mute and chirp, audio delay timer, remote alarm contacts (SPDT), NiCad battery backup, and low voltage AC power supply, 120V, AC.

- The monitor can be installed on or adjacent to any refrigerator or freezer
- Activates an audible and visual warning in case of power failure or overtemperature condition
- Choose from single probe digital models or multiple probe, microprocessor-based models
- Temperature range is -100°C to +25°C
- Probe size 1.25"L x 0.25" diameter (32 mm x 6 mm)

Catalog No. 6898

Digital Temperature Monitor Specifications

	Digital		Microprocessor-Based		
Catalog No.	6898	6899	6900	6901	6902
Input channels	1	1	2	3	4
Temperature range	-100°C to +25°C				
Display and setpoint resolution	1°C	1°C	0.1°C	0.1°C	0.1°C
Temperature alarm	high only		high and low		
LCD alphanumeric display	numeric only		8-character, back-lit, adjustable		
Visual alarm	red only		green = normal; red = deviation		
Solid-state probe lead wire	8 foot Teflon®	8 foot 24 gauge	20' Teflon, color-coded		
Relay delay	n/a		programmable, 0 – 30 minutes		
Alarm/battery test switch	n/a		standard		
Mounting method	Velcro®		bracket		
Case dimensions	5"L x 4.5"W x 2"D 27 x 114 x 50 mm		6.25"L x 3.25"W x 2"D 158 x 83 x 50 mm		

Comprehensive Cold Storage Solutions

We offer a wide range of high performance cold storage equipment and accessories for the pursuit of scientific discoveries. From laboratory refrigerators and freezers to blood banking cold storage equipment, our portfolio offers you a full range of solutions to best meet your laboratory needs.

Worldwide Service and Support

We are committed to keeping your lab equipment working at peak performance. Our goal is to help you lower ownership costs, manage labs more effectively and maximize productivity.

Contact our sales representative to learn more about our service offerings, including service agreements, preventative maintenance, onsite field repair, depot repair, compliance services and educational services.



Thermo Fisher Scientific (NYSE: TMO) is the world leader in serving science, enabling our customers to make the world healthier, cleaner and safer. With annual sales of more than \$9 billion, we employ 30,000 people and serve over 350,000 customers within pharmaceutical and biotech companies, hospitals and clinical diagnostic labs, universities, research institutions and government agencies as well as environmental and industrial process control settings. Serving customers through two premier brands, Thermo Scientific and Fisher Scientific, we help solve analytical challenges from routine testing to complex research and discovery. Thermo Scientific offers customers a complete range of high-end analytical instruments as well as laboratory equipment, software, services, consumables and reagents to enable integrated laboratory workflow solutions. Fisher Scientific provides a complete portfolio of laboratory equipment, chemicals, supplies and services used in healthcare, scientific research, safety and education. Together, we offer the most convenient purchasing options to customers and continuously advance our technologies to accelerate the pace of scientific discovery, enhance value for customers and fuel growth for shareholders and employees alike. Visit www.thermofisher.com.

© 2007 Thermo Fisher Scientific Inc. All rights reserved. All trademarks are the property of Thermo Fisher Scientific Inc. and its subsidiaries. Specifications, terms and pricing are subject to change. Not all products are available in all countries. Please consult your local sales representative for details.

Thermo
SCIENTIFIC

North America: USA/Canada +1 866 984 3766

Europe: Austria +43 1 801 40 0, Belgium +32 2 482 30 30, Finland +358 9 329 100, France +33 2 2803 2000,

Germany national toll free 08001-536 376, Germany international +49 6184 90 6940, Italy +39 02 95059 1, Netherlands +31 76 571 4440,

Russia/CIS +7 095 225 11 15, Spain/Portugal +34 93 223 09 18, Switzerland +41 44 454 12 12, UK/Ireland +44 870 609 9203

Asia: China +86 21 6865 4588 or +86 10 5850 3588, India +91 22 5542 9494, Japan +81 45 453 9220, Other Asian countries +852 2885 4613

Countries not listed: +49 6184 90 6940 or +33 2 2803 2000

www.thermo.com/cold

BRO-CECS-HPRFR-0207